

SAW Filter 1220.0MHz
Part No: MA03054

Model: TA0304A
Rev No: 2

A. MAXIMUM RATING:

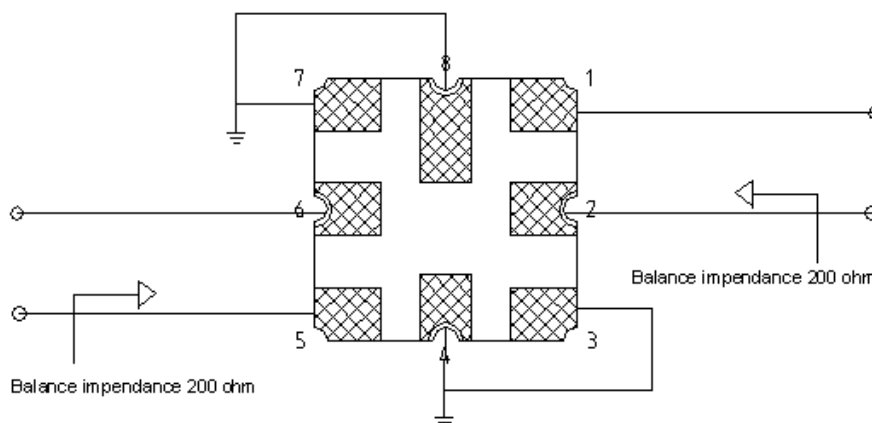
1. Operating Temperature: -40°C to +85°C
2. Storage Temperature: -40°C to +85°C

B. ELECTRICAL CHARACTERISTICS:

1. Balanced to balanced operation
2. Terminating source impedance: $Z_S = 200\Omega$
3. Terminating load impedance: $Z_L = 200\Omega$

Characteristics	Min.	Typ.	Max.	Note
Center frequency F_C MHz	-	1220	-	-
Insertion loss 1216 ~ 1224MHz IL dB	-	3.4	5.3	-
Ripple 1216 ~ 1224MHz dB	-	0.6	1.8	-
Attenuation: (Reference level from 0dB)				
500. F_c -91MHz dB	50	57	-	-
F_c -91, F_c -85MHz dB	50	57	-	-
F_c -76, F_c -68MHz dB	46	57	-	-
F_c -88MHz dB	50	57	-	-
F_c -72MHz dB	48	57	-	-
F_c -44MHz dB	50	56	-	-
F_c -36MHz dB	46	55	-	-
F_c +70, 2000MHz dB	50	55	-	-
Group delay ripple (p-p) (1216 ~ 1224MHz) nS	-	12	-	-

C. MEASUREMENT CIRCUIT:

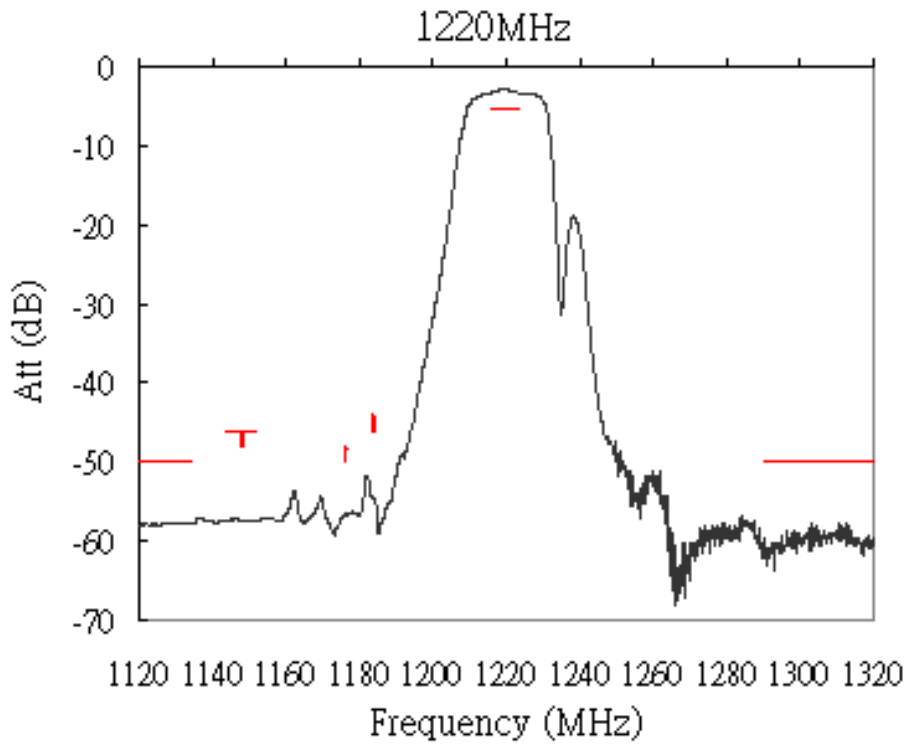


SAW Filter 1220.0MHz
Part No: MA03054

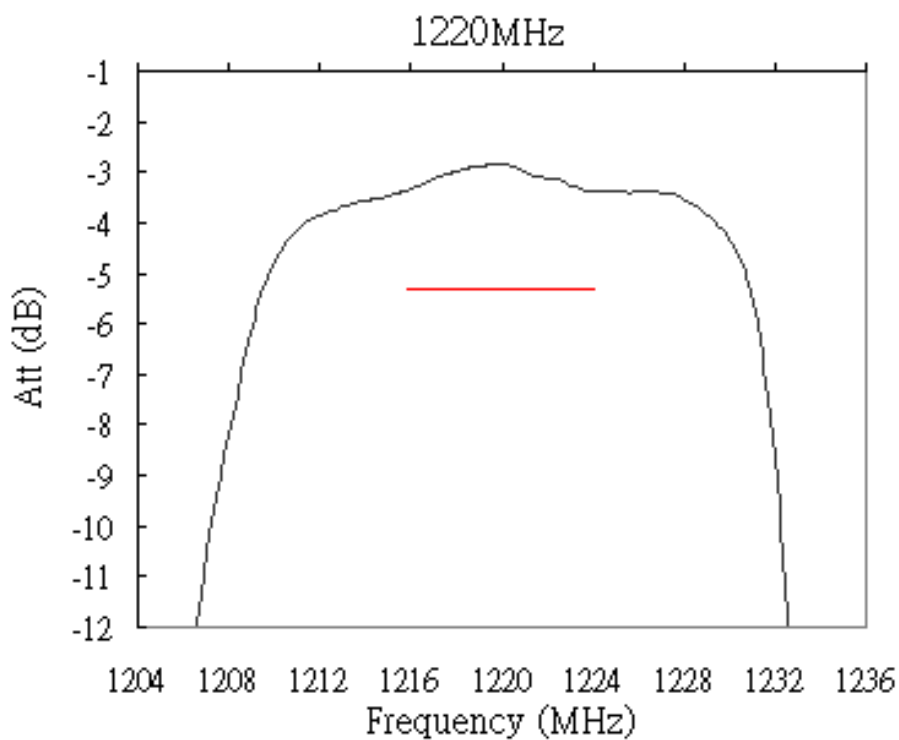
Model: TA0304A
Rev No: 2

D. FREQUENCY CHARACTERISTICS:

1. Sdd21 Response



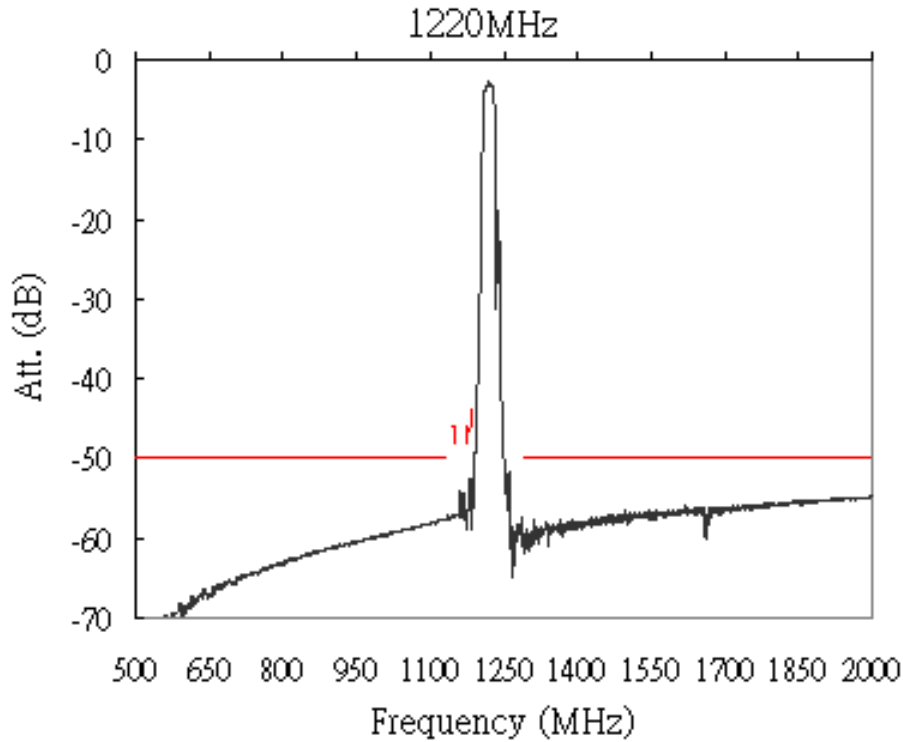
2. Sdd21 Response (Inband)



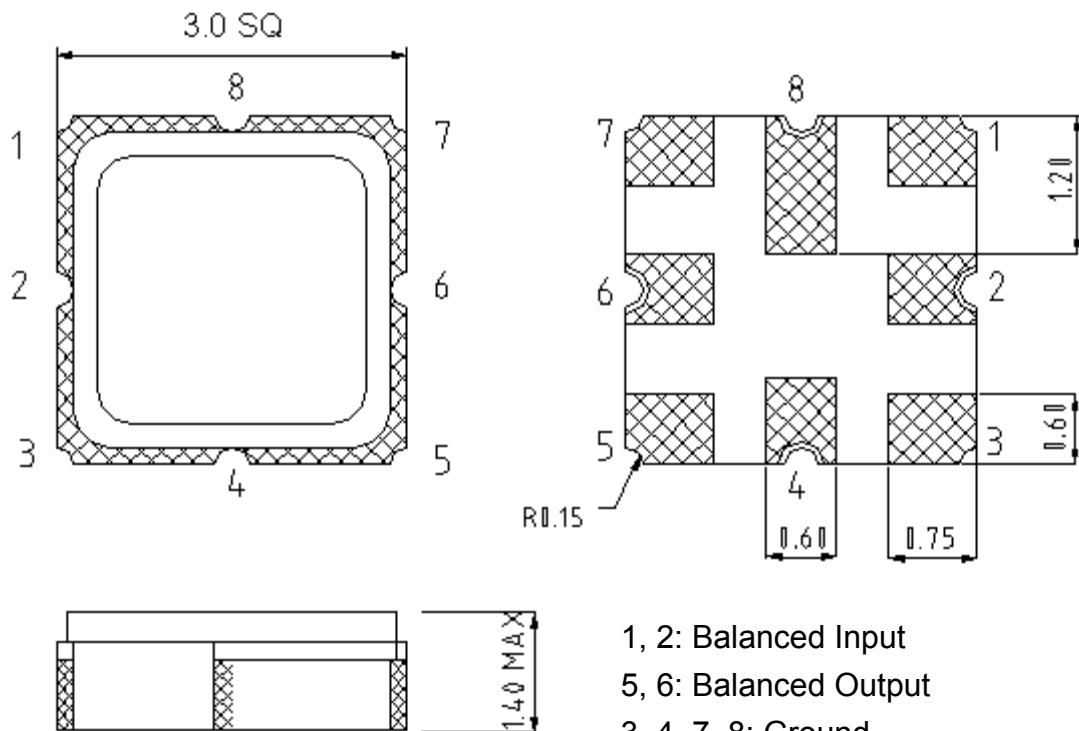
SAW Filter 1220.0MHz
Part No: MA03054

Model: TA0304A
Rev No: 2

3. Sdd21 Response (wideband)



E. OUTLINE DRAWING:



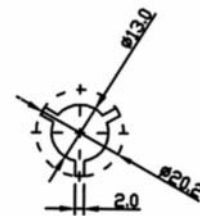
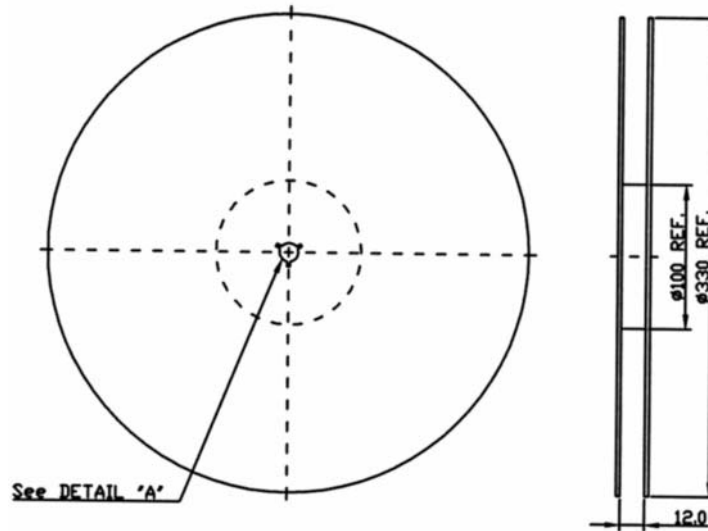
Unit: mm

SAW Filter 1220.0MHz
Part No: MA03054

Model: TA0304A
Rev No: 2

F. PACKING:

1. Reel Dimension



2. Tape Dimension

