

SAW Filter 915 0MHz for ISM900
Part No: MA03705

Model: TA915EC
Rev No: 2

A. MAXIMUM RATING:

1. Input Power Level: 10dBm
2. DC voltage: 0V
3. Operating Temperature: -40°C to +85°C
4. Storage Temperature: -40°C to +85°C

B. ELECTRICAL CHARACTERISTICS:

Item	Min.	Typ.	Max.
Center frequency Fc (MHz)	-	915.0	-
Insertion loss within 902 ~ 928MHz IL (dB)	-	1.7	3.2
Amplitude ripple (p-p) within 902 ~ 928MHz (dB)	-	1.0	2.0
Attenuation (Reference level from 0dB)			
10 ~ 765MHz (dB)	20.0	23.0	-
765 ~ 865MHz (dB)	20.0	23.0	-
965 ~ 1065MHz (dB)	22.0	24.5	-
1065 ~ 2000 MHz (dB)	18.0	24.5	-
Temperature coefficient of frequency TCf (ppm/K)	-	-30	-
Source impedance Z _S (Ω)	-	50	-
Load impedance Z _L (Ω)	-	50	-

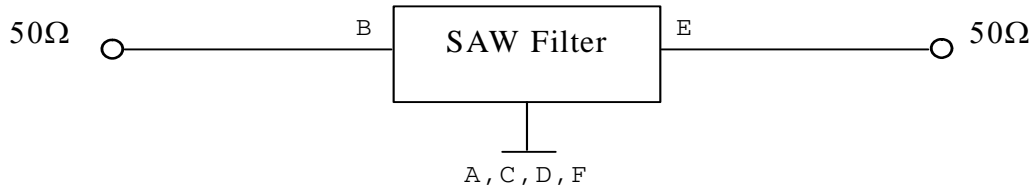
Note: The standard definitions is in JIS C 6703

SAW Filter 915 0MHz for ISM900
Part No: MA03705

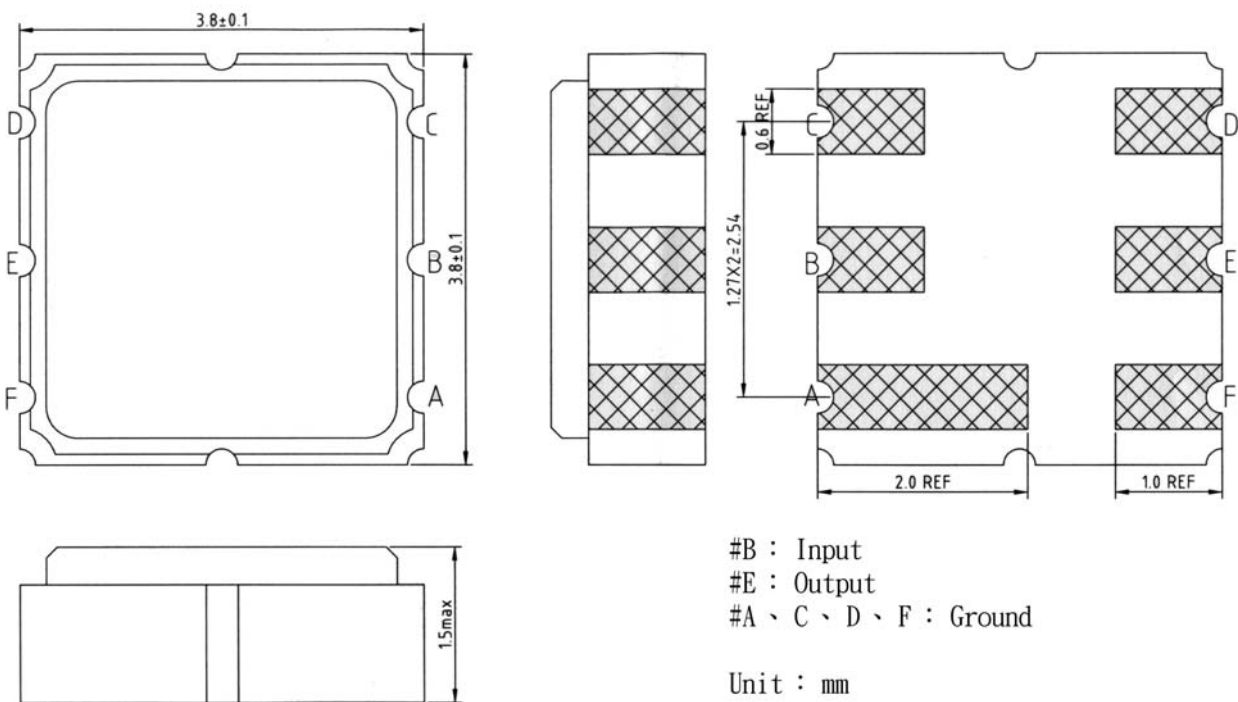
Model: TA915EC
Rev No: 2

C. MEASUREMENT CIRCUIT:

HP Network analyzer



D. OUTLINE DRAWING:

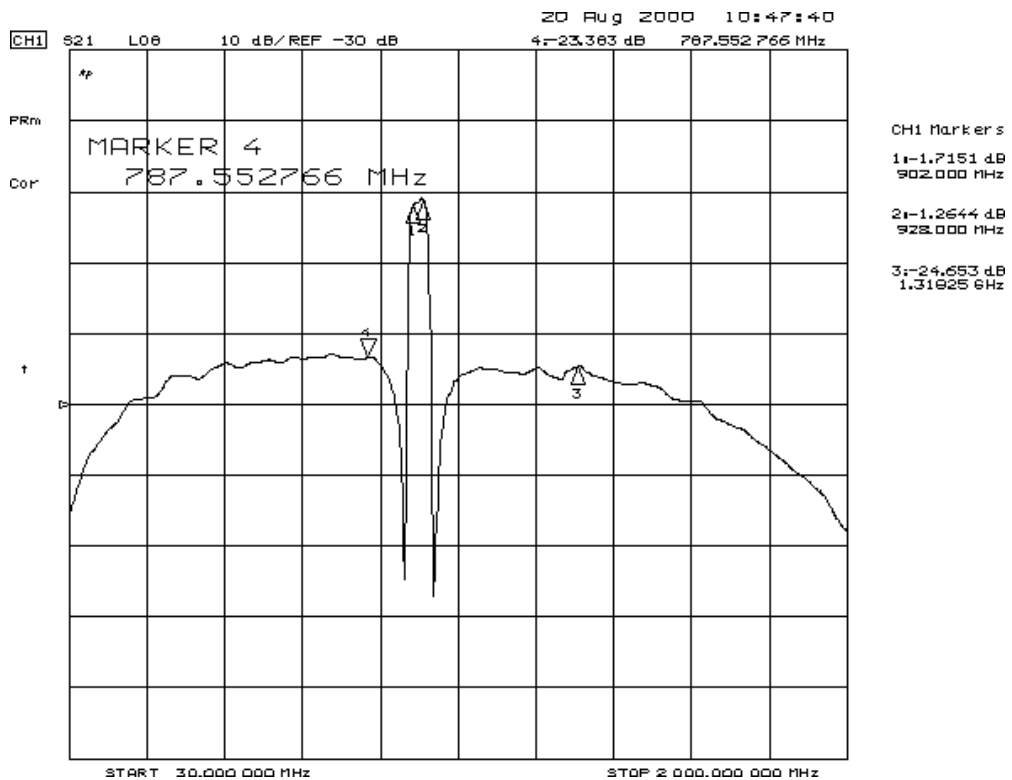
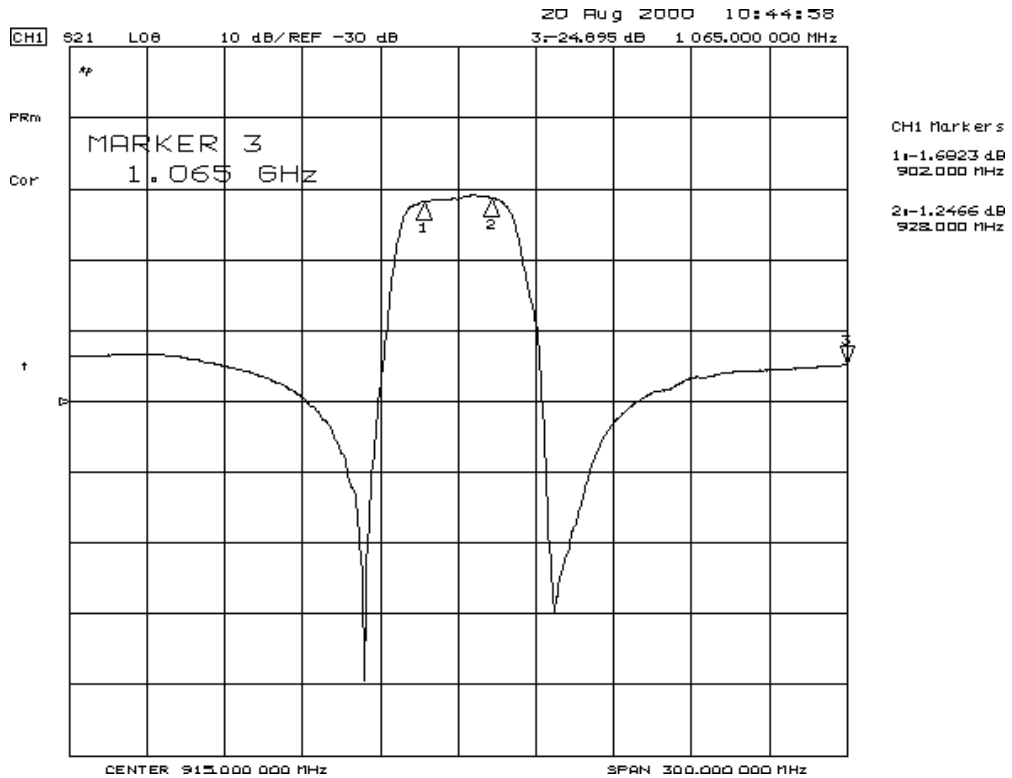


SAW Filter 915 0MHz for ISM900
Part No: MA03705

Model: TA915EC
Rev No: 2

E. FREQUENCY CHARACTERISTICS:

Transfer function

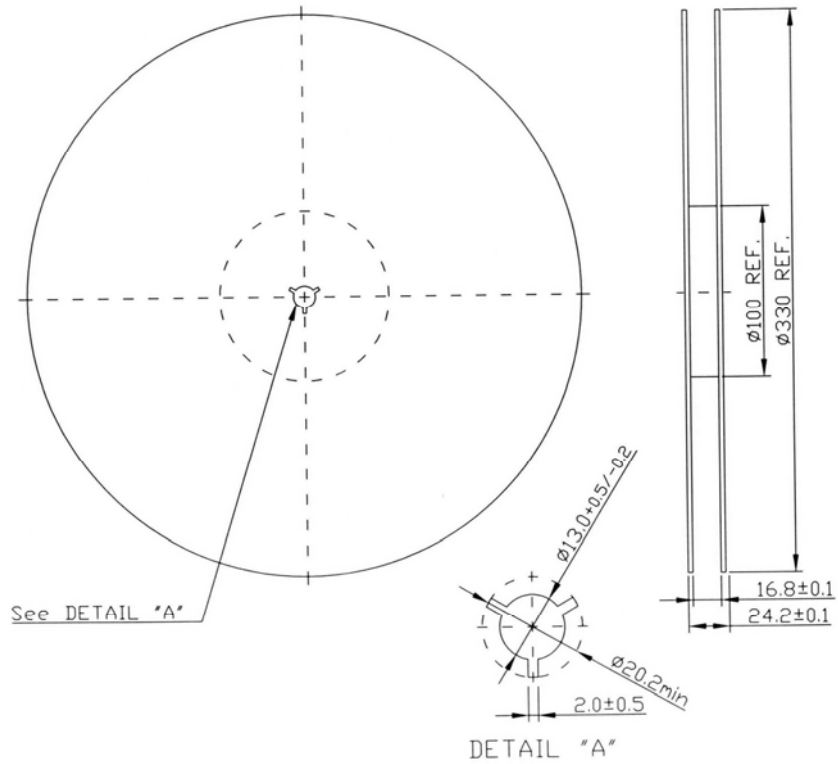


SAW Filter 915 0MHz for ISM900
Part No: MA03705

Model: TA915EC
Rev No: 2

F. PACKING:

1. Reel Dimension



2. Tape Dimension

