

**IF SAW Filter 434.260MHz**  
**Part No: MA04937**

**Model: TA0306A**  
**Rev No: 1**

**A. MAXIMUM RATING:**

1. Input Power Level: 10dBm
2. DC voltage: 0V
3. Operating Temperature: -40°C to +85°C
4. Storage Temperature: -40°C to +85°C

**B. ELECTRICAL CHARACTERISTICS:**

Reference temperature: TA = 25°C

Item	Min.	Typ.	Max.	Note
Center frequency Fc (MHz)	-	434.260	-	1
Minimum IL (434.1 ~ 434.42MHz) (dB) IL min	-	2.2	4.0	
Pass band (relative to IL min)				
434 ~ 434.52MHz (dB)	-	2.0	3.0	1
433.94 ~ 434.58MHz (dB)	-	3.0	6.0	
Pass bandwidth (relative to IL min) BW3 (kHz)	800	1100	-	
Attenuation: (relative to IL min) (dB)				
10 ~ 400.67MHz (dB)	40	45	-	
400.67 ~ 424.17MHz (dB)	35	42	-	
424.17 ~ 432.67MHz (dB)	20	25	-	1
436.27 ~ 440.67MHz (dB)	18	23	-	
440.67 ~ 450.67MHz (dB)	25	30	-	
450.67 ~ 1000MHz (dB)	35	42	-	
Impedance at Fc; Input Z <sub>IN</sub> = R <sub>IN</sub> // C <sub>IN</sub>	434Ω // 3.3pF			
Output Z <sub>OUT</sub> = R <sub>OUT</sub> // C <sub>OUT</sub>	434Ω // 3.3pF			

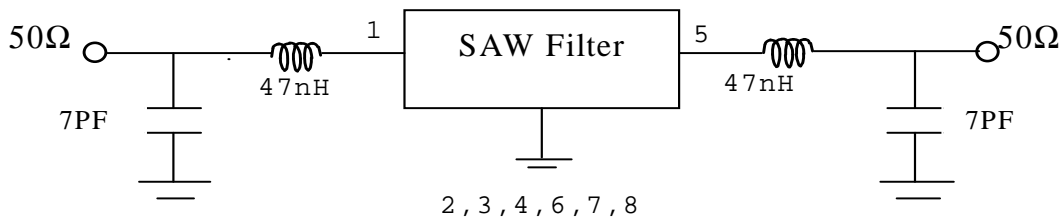
Note 1: The standard definitions is in JIS C 6703

**IF SAW Filter 434.260MHz**  
**Part No: MA04937**

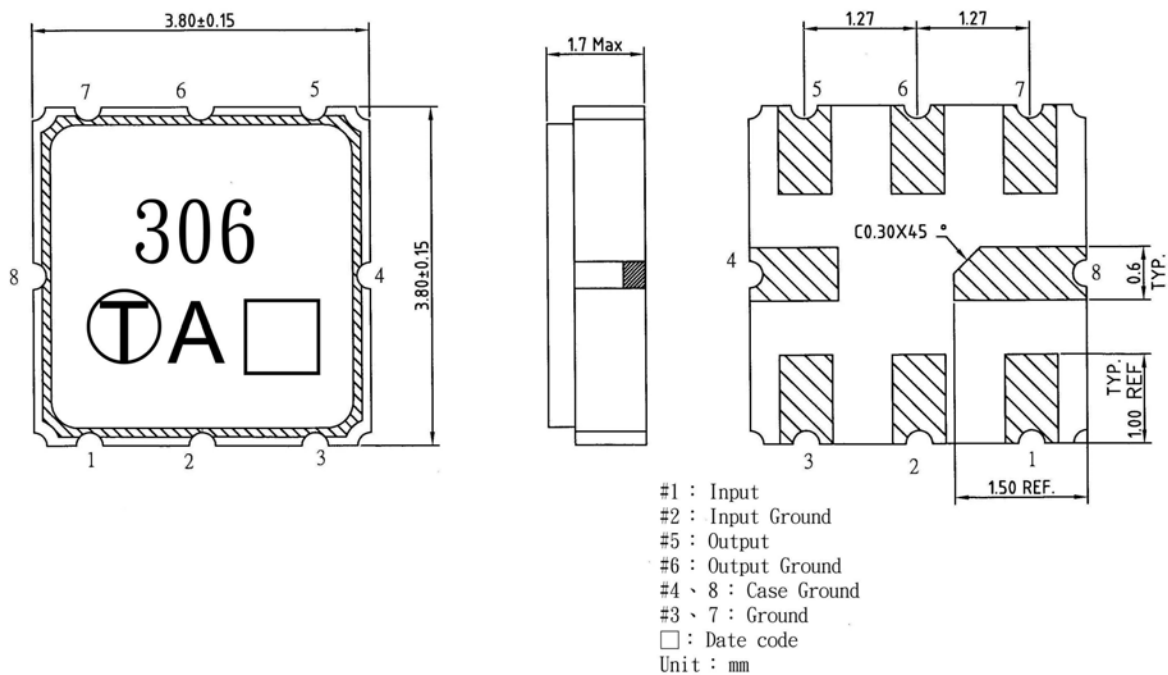
**Model: TA0306A**  
**Rev No: 1**

**C. MEASUREMENT CIRCUIT:**

HP Network analyzer



**D. OUTLINE DRAWING:**



**IF SAW Filter 434.260MHz**  
**Part No: MA04937**

**Model: TA0306A**  
**Rev No: 1**

**E. FREQUENCY CHARACTERISTICS:**

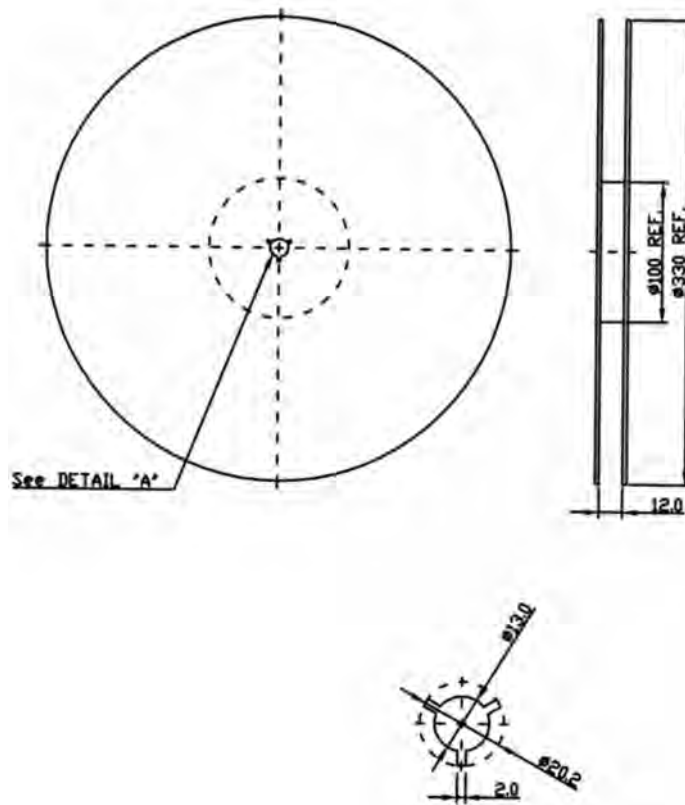


**IF SAW Filter 434.260MHz**  
**Part No: MA04937**

**Model: TA0306A**  
**Rev No: 1**

**F. PACKING:**

1. REEL DIMENSION



2. TAPE DIMENSION

