

**SAW Filter 433.920MHz**  
**Part No: MA05277**

**Model: TA0264A**  
**Rev No: 4**

**A. MAXIMUM RATING:**

1. Input Power Level: 10dBm
2. DC voltage: 0V
3. Operating Temperature: -45°C to +120°C
4. Storage Temperature: -45°C to +120°C

**B. ELECTRICAL CHARACTERISTICS:**

Reference temperature: TA = -40°C to 95°C

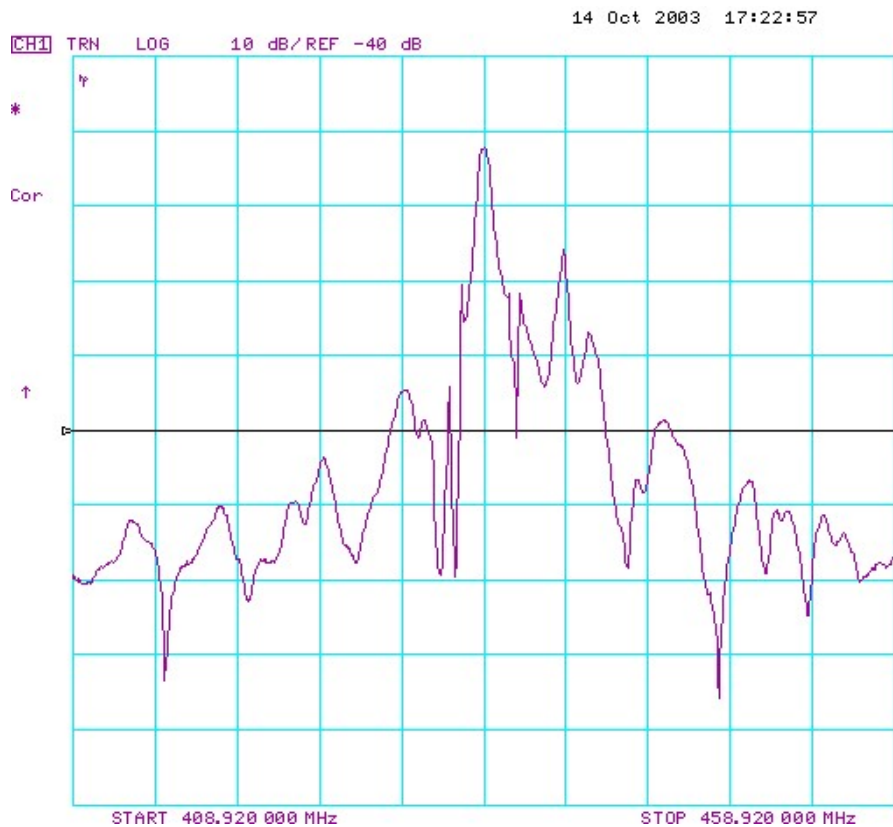
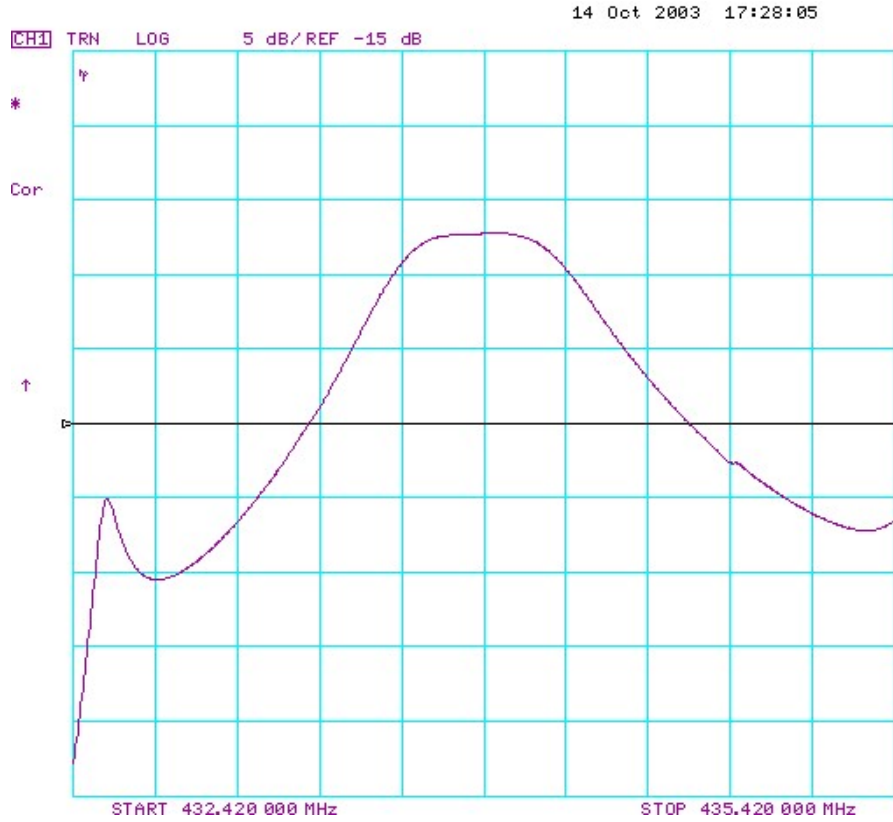
Item	Min.	Typ.	Max.	Note
Center frequency Fc (MHz)	-	433.92	-	1
Minimum IL (433.8 ~ 434.12MHz) (dB) IL min	-	2.2	4.0	
Pass band (relative to IL min)				
433.76 ~ 434.08MHz (dB)	-	-	2.0	1
433.74 ~ 434.10MHz (dB)	-	-	3.0	
433.68 ~ 434.16MHz (dB)	-	-	6.0	
Pass bandwidth (relative to IL min) BW3 (kHz)	670	720	-	
Attenuation: (relative to IL min) (dB)				
10 ~ 414MHz (dB)	45	48	-	1
414 ~ 427.5MHz (dB)	40	43	-	
427.5 ~ 432.84MHz (dB)	15	19	-	
434.92 ~ 442MHz (dB)	10	14	-	
442 ~ 550MHz (dB)	35	38	-	
550 ~ 1000MHz (dB)	45	50	-	
Impedance at FC Input $Z_{IN} = R_{IN} // C_{IN}$ Output $Z_{OUT} = R_{OUT} // C_{OUT}$	227Ω // 3.3pF 227Ω // 3.3pF			
Turnover To (deg. C)	25 typ.			

Note: The standard definitions is in JIS C 6703

**SAW Filter 433.920MHz**  
**Part No: MA05277**

**Model: TA0264A**  
**Rev No: 4**

**C. FREQUENCY CHARACTERISTICS:**

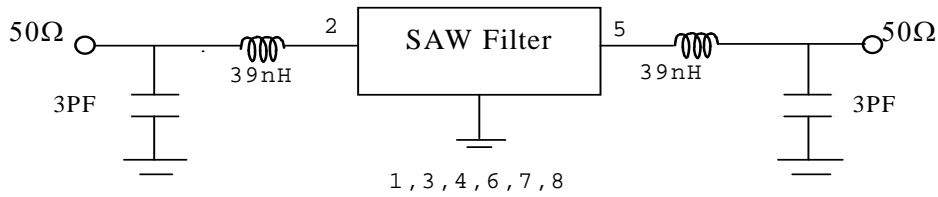


**SAW Filter 433.920MHz**  
**Part No: MA05277**

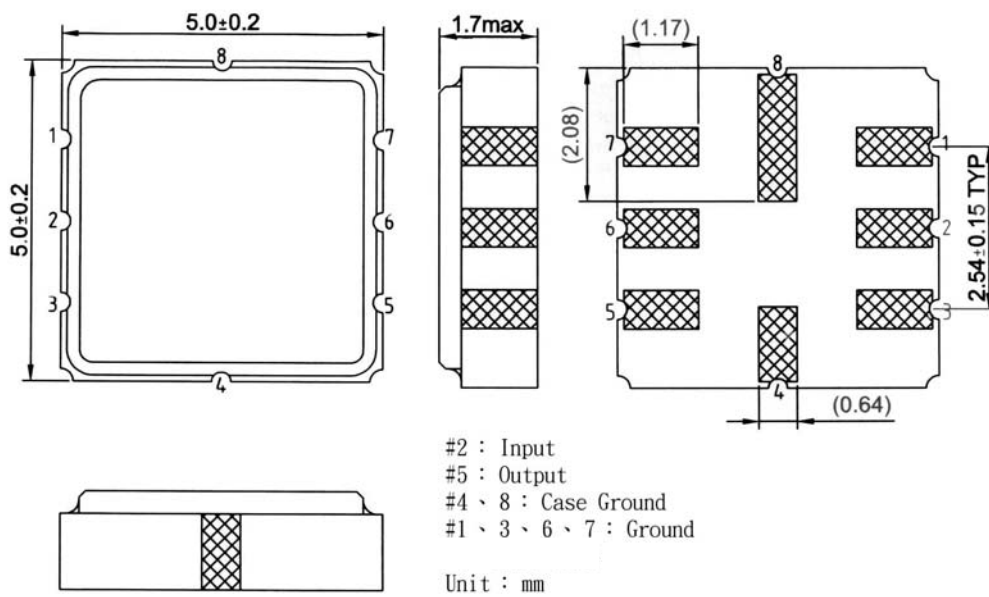
**Model: TA0264A**  
**Rev No: 4**

**D. MEASUREMENT CIRCUIT:**

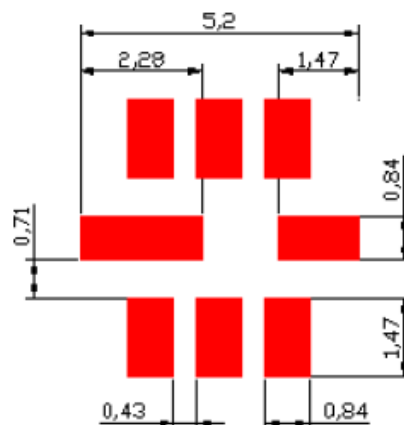
HP Network analyzer



**E. OUTLINE DRAWING:**



**F. PCB FOOTPRINT:**

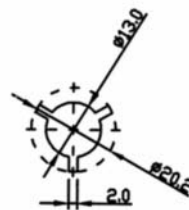
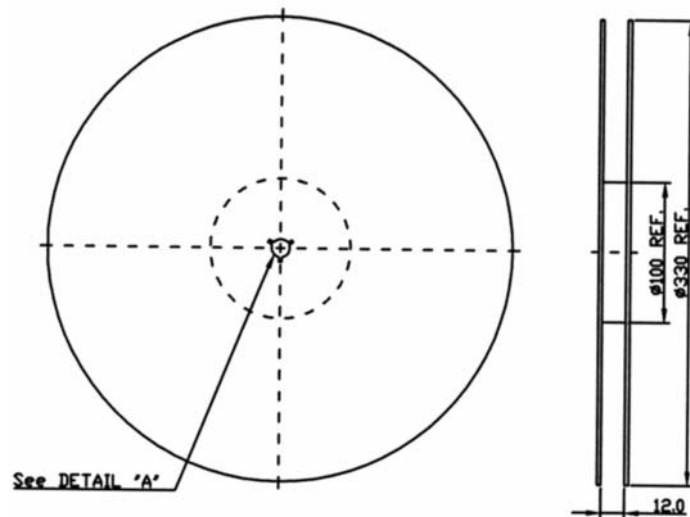


**SAW Filter 433.920MHz**  
**Part No: MA05277**

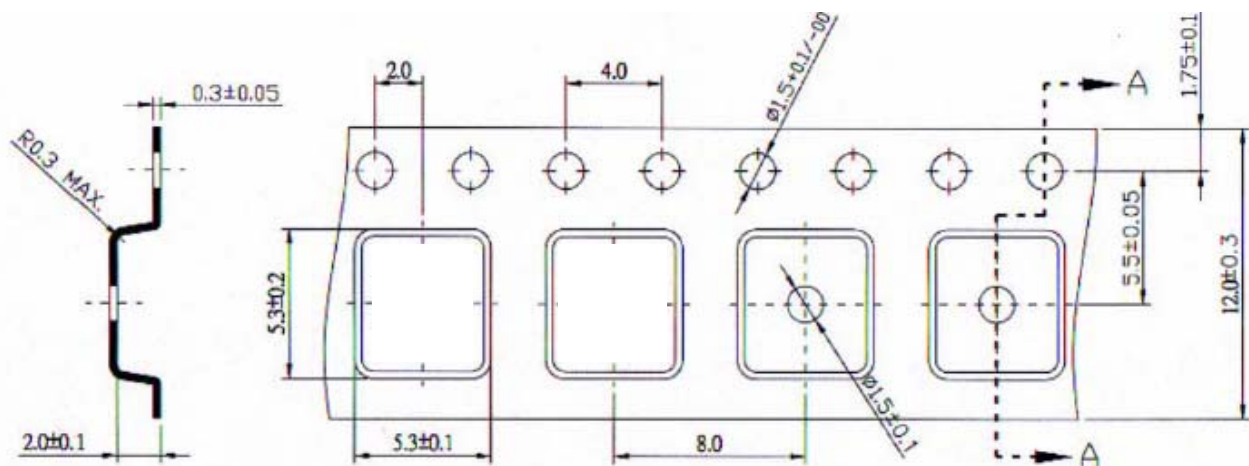
**Model: TA0264A**  
**Rev No: 4**

**G. PACKING:**

1. Reel Dimension (Please refer to FR-75D10 for packing quantity)



2. Tape Dimension



Section A-A

**SAW Filter 433.920MHz**  
**Part No: MA05277**

**Model: TA0264A**  
**Rev No: 4**

**H. RECOMMENDED REFLOW PROFILE:**

