

SAW Filter 473.40 MHz

Model: TB0160A

Part No: MA05402

REV NO.: 3

A. MAXIMUM RATING:

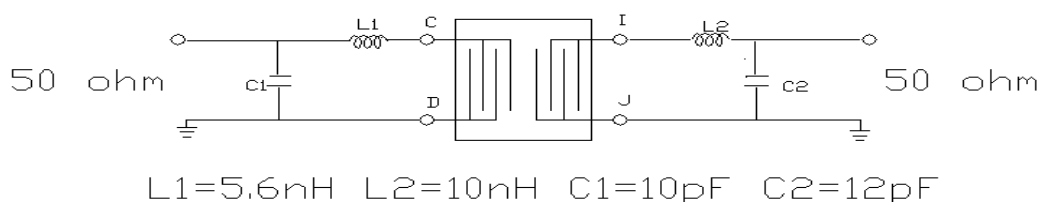
1. Input Power Level: 10 dBm
2. Operating Temperature: -40°C to 70°C
3. Storage Temperature: -40°C to 70°C

B. ELECTRICAL CHARACTERISTICS:

Item	Unit	Min.	Type.	Max.	Note
Center frequency, Fc	MHz	-	473.4	-	
Insertion Loss, IL	dB	-	9.7	13	
Passband width, BW3	MHz	-	28	-	
Amplitude Ripple (462MHz~483.75MHz)	dB	-	0.68	0.75	
Group delay ripple (462MHz~483.75MHz)	nS	-	45	50	
Triple transit suppression	dB	-	40	-	
Attenuation:(Reference level from Min IL)					
275 to 440 MHz	dB	40	55	-	
440 to 452.6 MHz	dB	45	47	-	
498 to 675 MHz	dB	40	41	-	

C. MEASUREMENT CIRCUIT:

- 1) For 50 ohm Unbalanced Input and Output



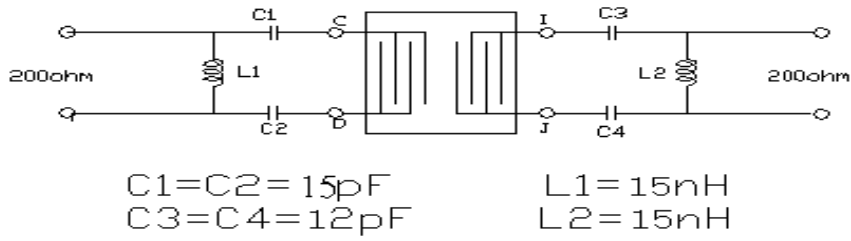
- 2) For 200 ohm Balanced Input and Output

SAW Filter 473.40 MHz

Model: TB0160A

Part No: MA05402

REV NO.: 3



SAW Filter 473.40 MHz
Part No: **MA05402**

Model: TB0160A
REV NO.: 3

D. FREQUENCY CHARACTERISTICS:

1) Wide band of response:

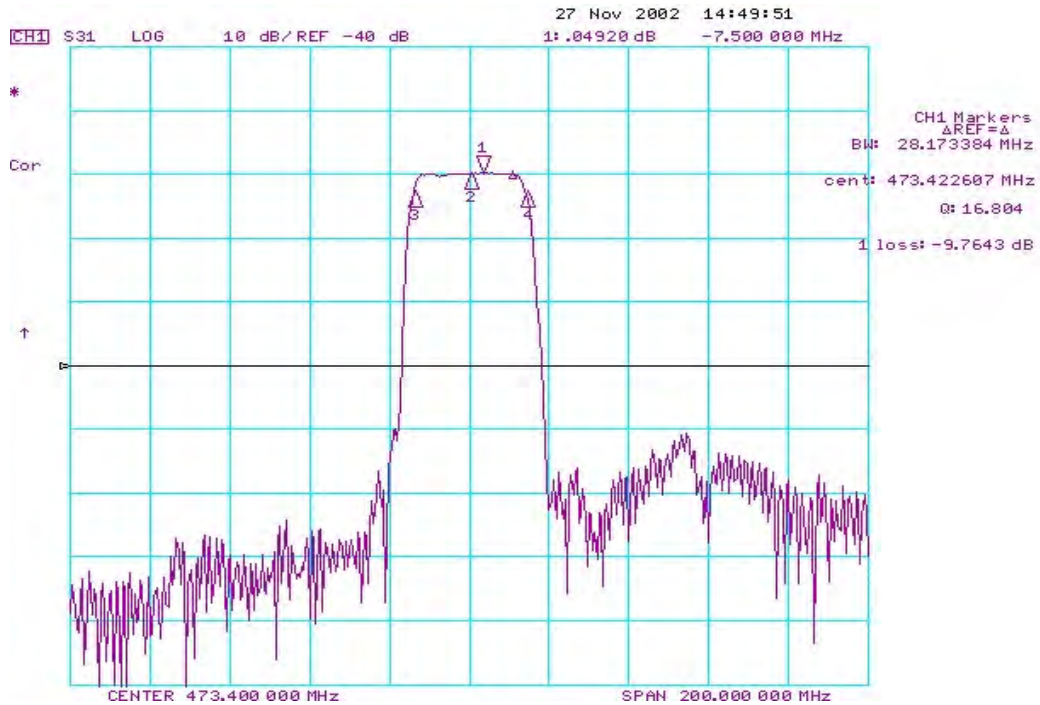
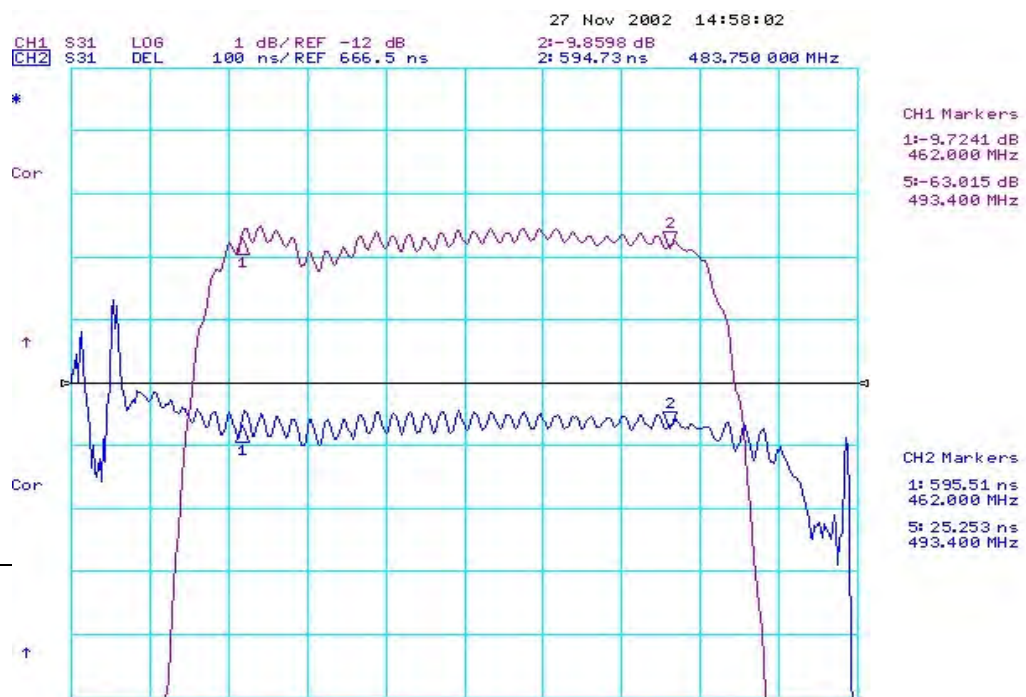


Fig-1 S21 Response Horizontal: 20MHz/Div. Vertical: 10dB/Div

2) Passband of response:



SAW Filter 473.40 MHz

Model: TB0160A

Part No: MA05402

REV NO.: 3

Fig-2 Group Delay and Ripple, Horizontal:4MHz/Div. Vertical: 1 dB/Div Vertical: 100nS/Div

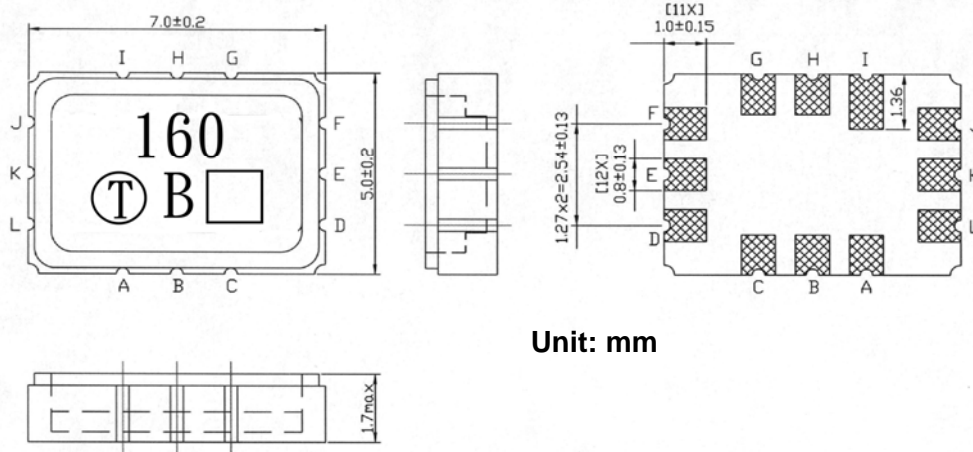
SAW Filter 473.40 MHz

Model: TB0160A

Part No: MA05402

REV NO.: 3

E. OUTLINE DRAWING:



Unit: mm

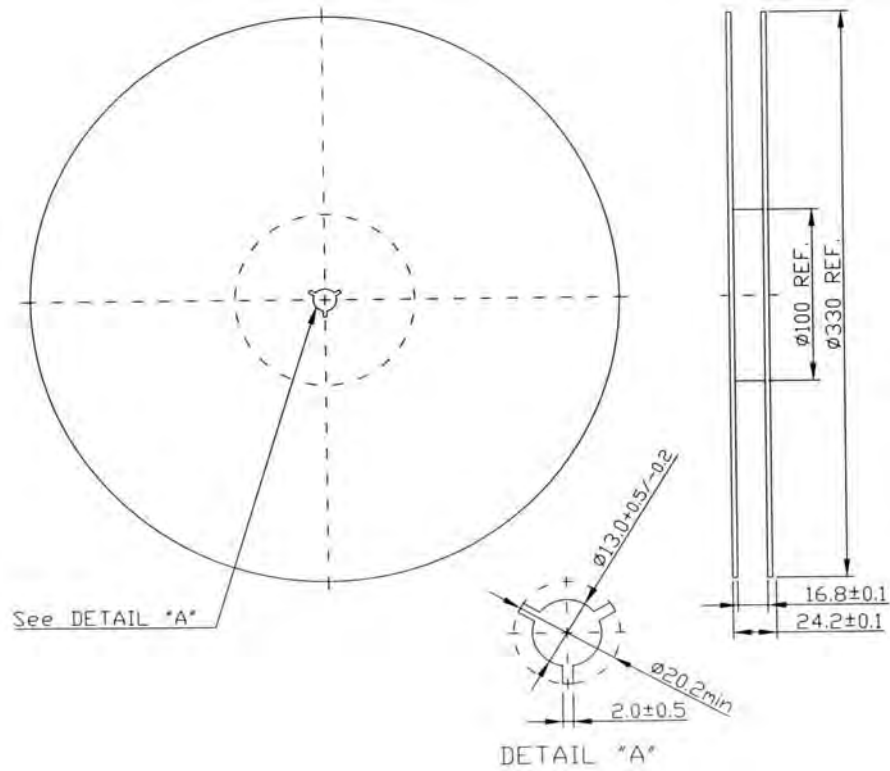
- Pin C : Unbalanced Input or Balanced Input
- Pin D : Unbalanced Input Ground or Balanced Input
- Pin I : Unbalanced Output or Balanced Output
- Pin J : Unbalanced Output Ground or Balanced Output
- Pin A, B, E, F, G, H, K, L : To be Ground

SAW Filter 473.40 MHz
Part No: MA05402

Model: TB0160A
REV NO.: 3

F. PACKING:

1. REEL DIMENSION



2. TAPE DIMENSION

