

SAW Filter 1216.88MHz
Part No: MA05462

Model: TA0288A
Rev No: 1

A. MAXIMUM RATING:

1. Input Power Level: 10dBm
2. DC voltage: 3V
3. Operating Temperature: 0°C to +75°C
4. Storage Temperature: -40°C to +85°C

B. ELECTRICAL CHARACTERISTICS:

Balanced to balanced operation

Terminating source impedance: $Z_S = 200\Omega$

Terminating load impedance: $Z_L = 200\Omega$

Item	Unit	Min.	Typ.	Max.
Center frequency Fc	MHz	-	1216.88	-
Insertion Loss 1212.88 ~ 1220.88MHz IL min	dB	-	4.5	6.0
Ripple 1212.88 ~ 1220.88MHz	dB	-	1.2	-
-3dB Bandwidth BW -3dB	MHz	-	15.9	-
-4dB Bandwidth BW -4dB	MHz	13.75	16.8	-
-12dB Bandwidth BW -12dB		-	22.5	-
Attenuation:(Reference level from IL min)				
Fc -95 to Fc -80MHz	dB	50	56	-
Fc -80 to Fc -65MHz	dB	47	53	-
Fc -36MHz	dB	43	50	-
Fc +60 to Fc +70MHz	dB	43	52	-

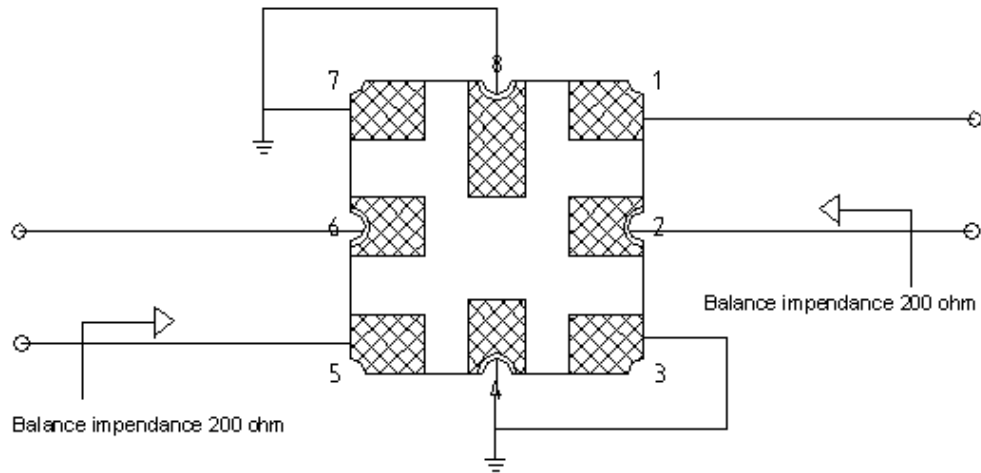
Note:

IL min is the minimum of the pass band attenuation. The center frequency Fc is the mean value of the upper and lower frequencies at the 4dB filter attenuation level relative to the IL min.

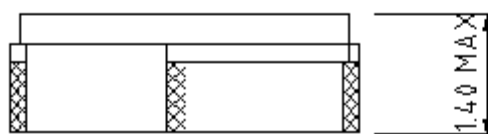
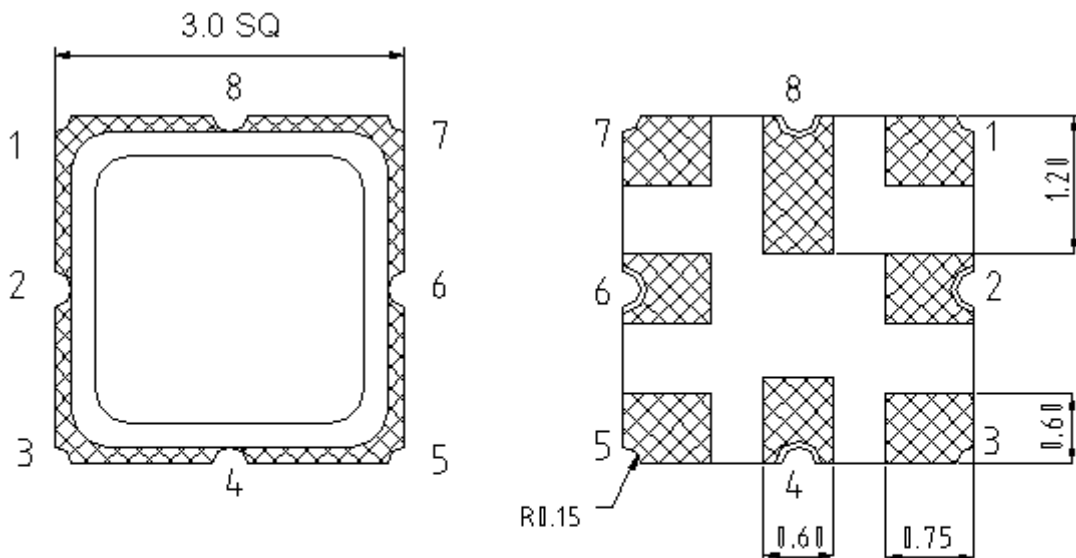
SAW Filter 1216.88MHz
Part No: MA05462

Model: TA0288A
Rev No: 1

C. MEASUREMENT CIRCUIT:



D. OUTLINE DRAWING:



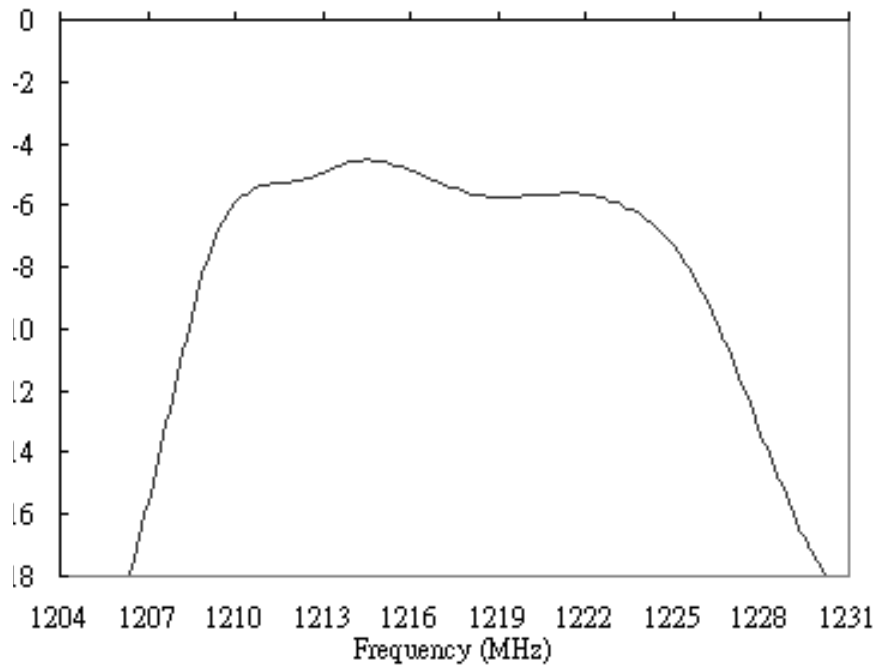
1, 2: Balanced Input
 5, 6: Balanced Output
 3, 4, 7, 8: Ground
 Unit: mm

SAW Filter 1216.88MHz
Part No: MA05462

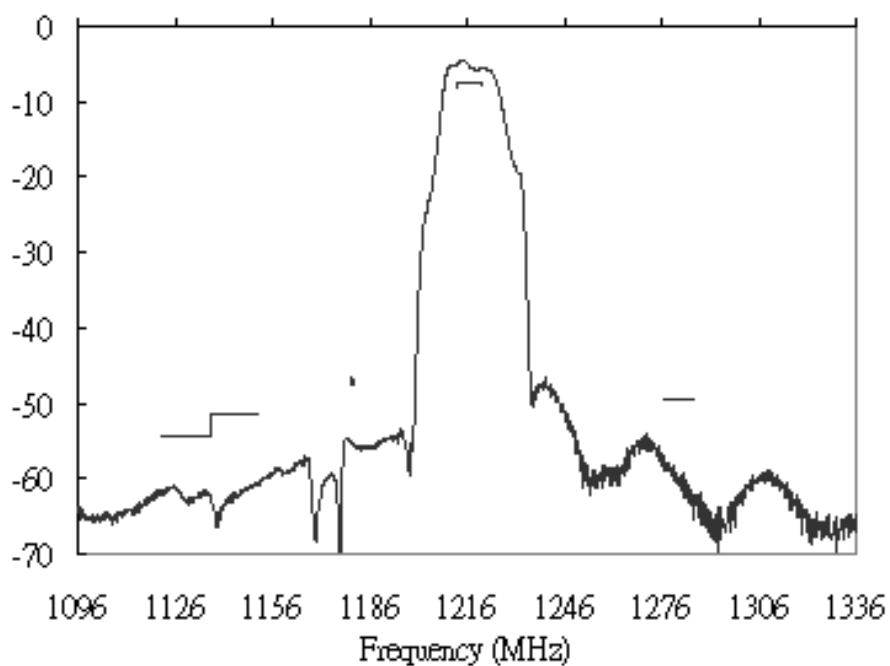
Model: TA0288A
Rev No: 1

E FREQUENCY CHARACTERISTICS:

Narrowband



Wideband

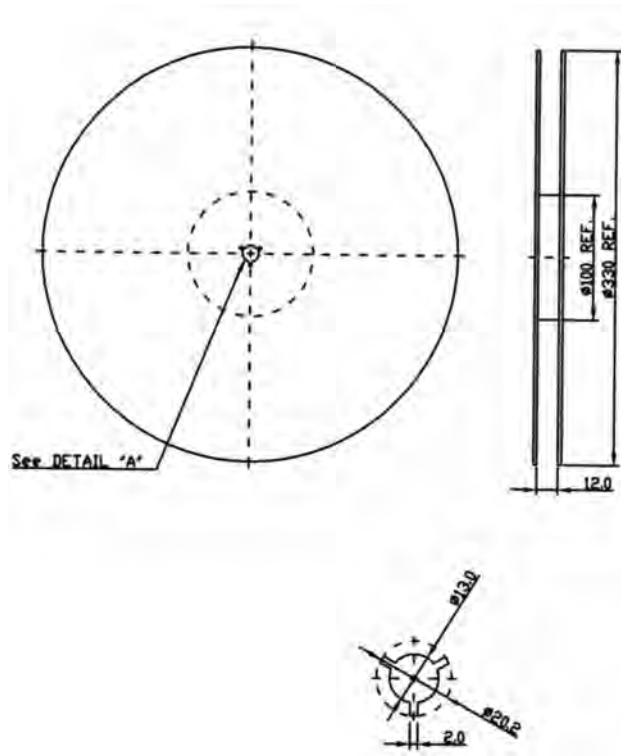


SAW Filter 1216.88MHz
Part No: MA05462

Model: TA0288A
Rev No: 1

F. PACKING:

1. REEL DIMENSION



2. TAPE DIMENSION

