
SAW Filter 976MHz
Part No: MA05689

Model: TA0244A
Rev No: 2

A. MAXIMUM RATING:

1. Input Power Level: 10dBm
2. DC voltage: 0V
3. Operating Temperature: 0°C to +50°C
4. Storage Temperature: -40°C to +85°C

B. ELECTRICAL CHARACTERISTICS:

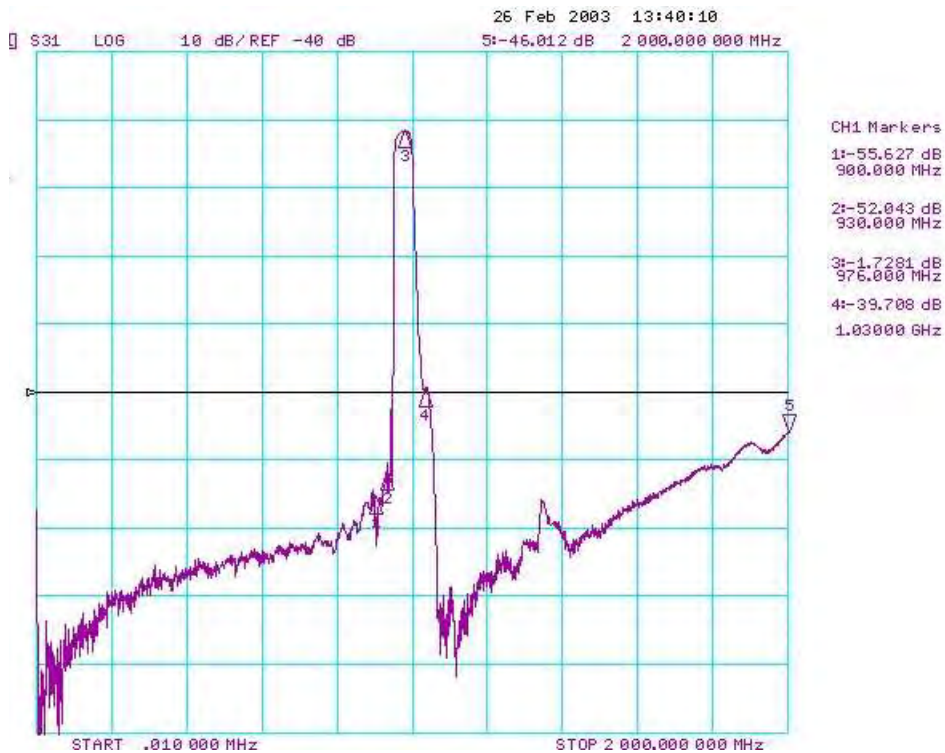
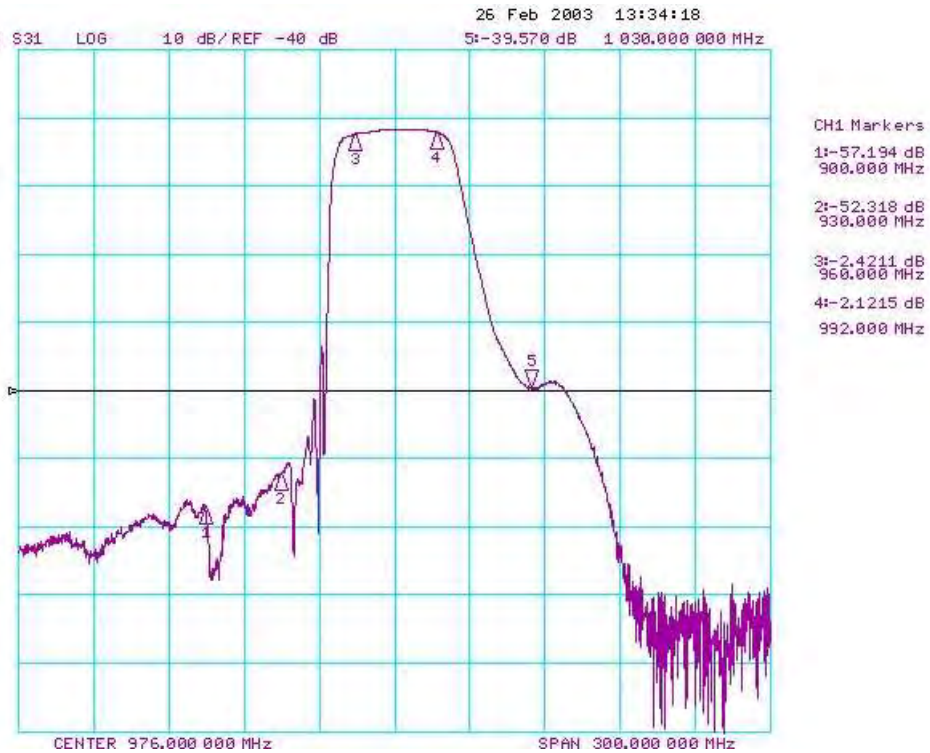
Item	Min.	Typ.	Max.
Center frequency Fc MHz	-	976	-
Insertion loss 960 ~ 992MHz IL (dB)	-	2.5	3.5
Amplitude ripple 960 ~ 992MHz (dB)	-	0.8	1.8
Return loss 960 ~ 992MHz	7.0	13	-
Attenuation (Reference level from 0dB)			
DC ~ 900MHz (dB)	25	56	-
900 ~ 930MHz (dB)	35	51	-
1030 ~ 2000MHz (dB)	25	38	-
Source impedance Z _S (Ω)	-	50	-
Load impedance Z _L (Ω)	-	50	-

Note: No matching network required for operation at 50Ω

SAW Filter 976MHz
Part No: MA05689

Model: TA0244A
Rev No: 2

C. FREQUENCY CHARACTERISTICS:

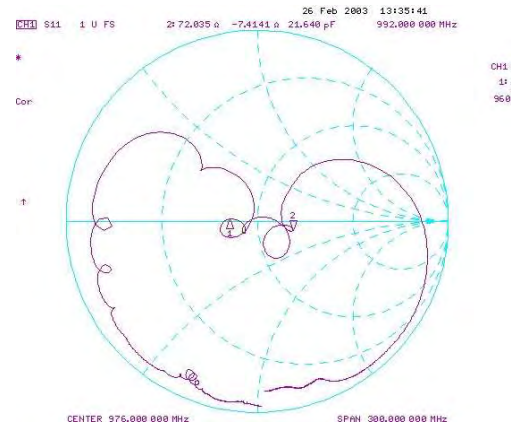


SAW Filter 976MHz
Part No: MA05689

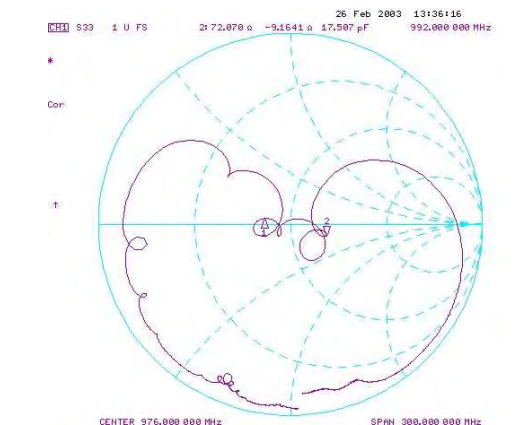
Model: TA0244A
Rev No: 2

Reflection Functions

S11



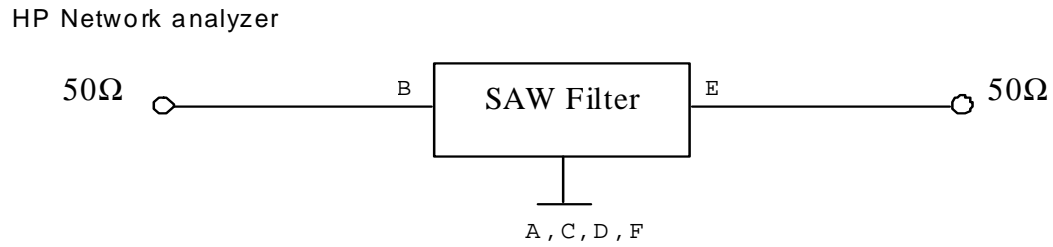
S22



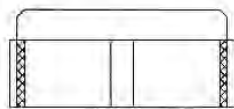
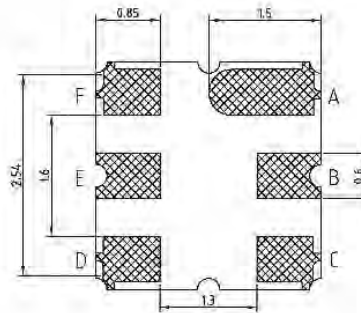
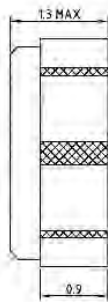
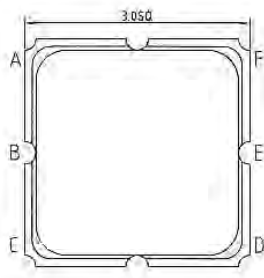
SAW Filter 976MHz
Part No: MA05689

Model: TA0244A
Rev No: 2

E. MEASUREMENT CIRCUIT:



F. OUTLINE DRAWING:



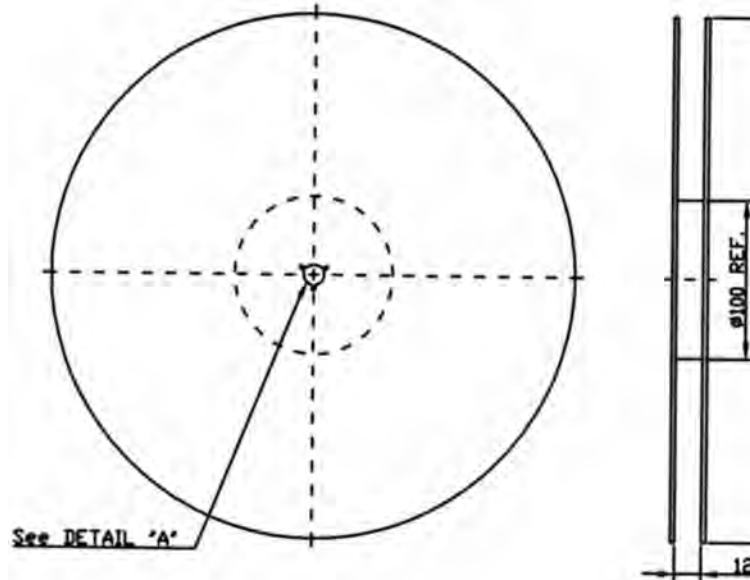
B: Input
E: Output
A, C, D, F: Ground
Unit: mm

SAW Filter 976MHz
Part No: MA05689

Model: TA0244A
Rev No: 2

G. PACKING:

1. REEL DIMENSION



2. TAPE DIMENSION

