
140.0MHz SAW Filter**Model: TB0233A****Part No: MA05919****REV NO.: 1**

A. MAXIMUM RATING:

1. Input Power Level: +20 dBm
2. Operating Temperature: -10°C to +70°C
3. Storage Temperature: -40°C to +85°C

B. ELECTRICAL CHARACTERISTICS:

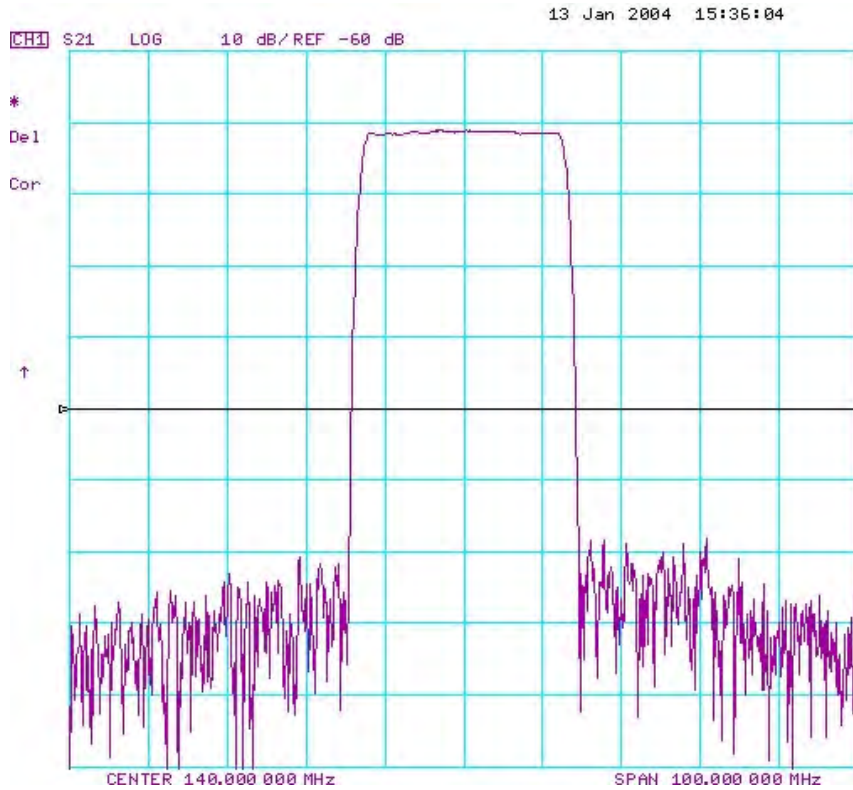
Parameters	Unit	Min.	Typical	Max.
Center frequency, Fc	MHz	139.9	140.0	140.1
Insertion Loss, IL	dB	-	21.5	24.0
1 dB Bandwidth	MHz	24.3	24.6	-
3 dB Bandwidth	MHz	25.0	25.5	-
40 dB Bandwidth	MHz	-	28.5	30.0
Relative Attenuation:				
10 to 120 MHz	dB	50	55	-
160 to 280 MHz	dB	50	55	-
Amplitude ripple within Fc ± 10 MHz	dB	-	0.7	1.0
Group delay ripple within Fc ± 10 MHz	nsec	-	30	100
Absolute Delay	usec	-	1.20	-
Substrate Material	-	-	LN	-

140.0MHz SAW Filter
Part No: MA05919

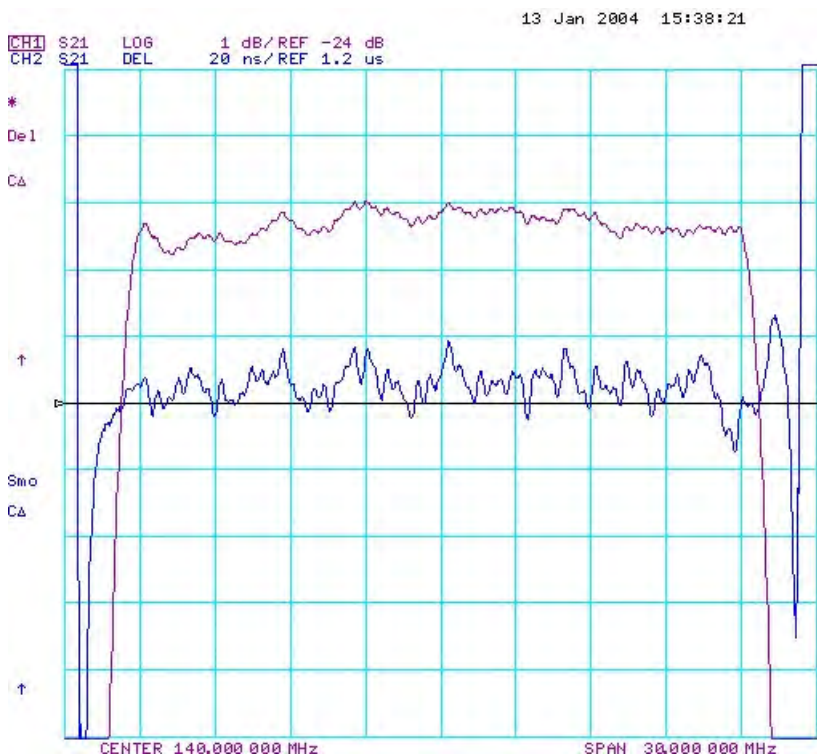
Model: TB0233A
REV NO.: 1

C. FREQUENCY CHARACTERISTICS:

(1) Frequency Response



(2) Passband response and Group Delay variation

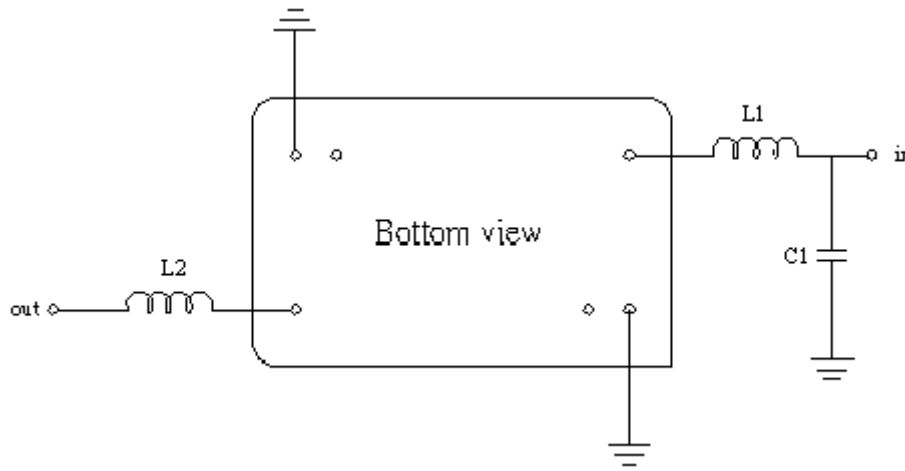


140.0MHz SAW Filter
Part No: MA05919

Model: TB0233A
REV NO.: 1

D. MEASUREMENT CIRCUIT:

Source and load impedance: 50 Ω



L1=56 nH, C1=18 pF, L2=56 nH

E. OUTLINE DRAWING:

