

915.0MHz SAW Resonator
Part No: MA06101

Model: TD0106A
REV NO.: 1

A. FEATURES:

1. 2-Port Resonator.

B. MAXIMUM RATING:

1. Input Power Level: 0 dBm
2. DC voltage: 12 V
3. Operating Temperature: -40°C to +85°C
4. Storage Temperature: -40°C to +85°C

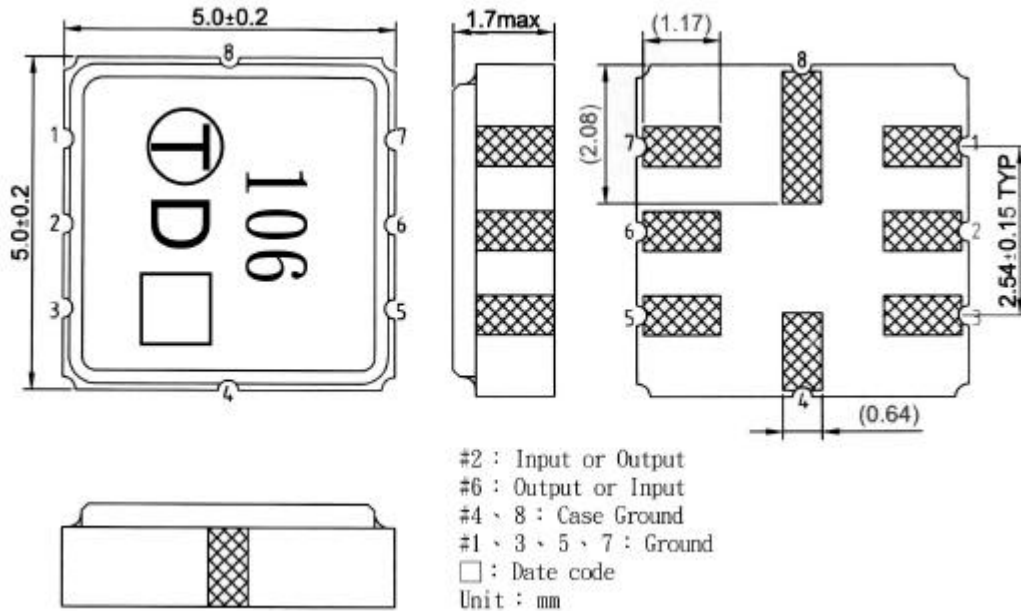
C. ELECTRICAL CHARACTERISTICS:

Characteristic	Units	Minimum	Typical	Maximum
Center frequency Fr	MHz	914.850	915.000	915.150
Insertion Loss IL	dB	-	8	9
Equivalent Elements				
Motional capacitance C1	fF	-	0.225	-
Motional inductance L1	μH	-	134.5	-
Motional resistance R1	Ohm	-	125	-
Parallel capacitance Co	pF	-	1.9	-
Temp.coeff.	ppm/c*2	-	0.032	-
Turnover To	deg.C	-	25	-
Package size		SMD 5X5X1.4mm		

915.0MHz SAW Resonator
Part No: MA06101

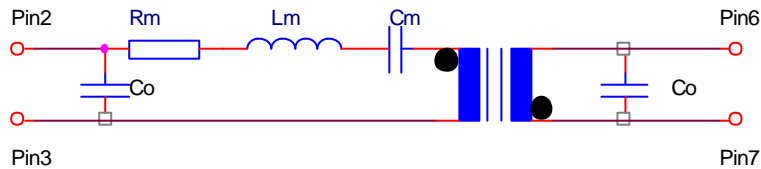
Model: TD0106A
REV NO.: 1

D. OUTLINE DRAWING:



E. EQUIVALENT CIRCUIT:

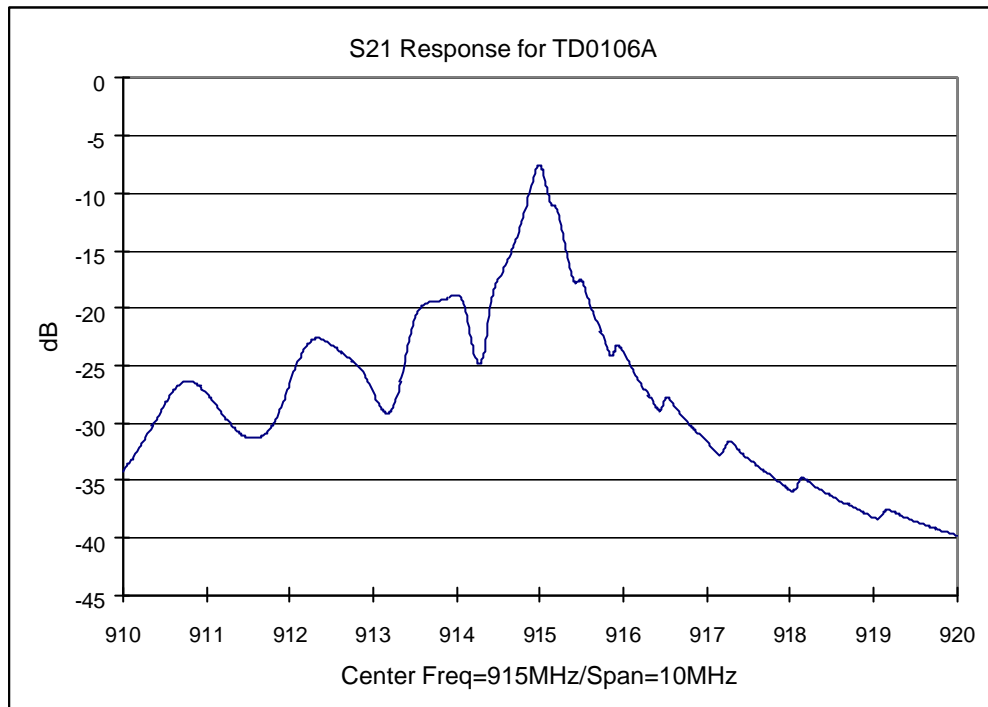
Two-Port Resonator:



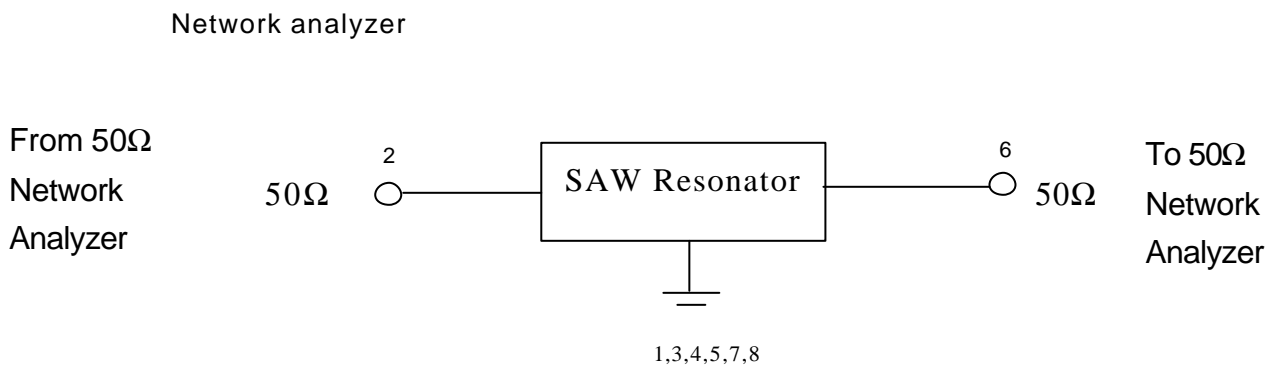
915.0MHz SAW Resonator
Part No: **MA06101**

Model: TD0106A
REV NO.: 1

F. FREQUENCY CHARACTERISTICS:



G. TEST CIRCUIT:

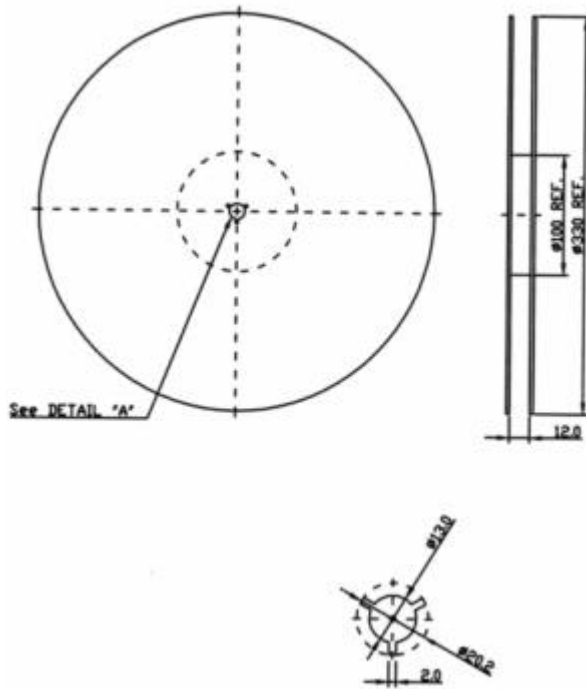


915.0MHz SAW Resonator
Part No: MA06101

Model: TD0106A
REV NO.: 1

H. PACKING:

1. REEL DIMENSION



2. TAPE DIMENSION

