

SAW Filter 942.5MHz
Part No: MA06221

Model: TA0230A
Rev No: 2

A. MAXIMUM RATING:

1. Operating Temperature: -10°C ~ +75°C
2. Storage Temperature: -40°C ~ +85°C

B. CHARACTERISTICS:

Singled to Balanced operation

Terminating source impedance: $Z_S = 50\Omega$

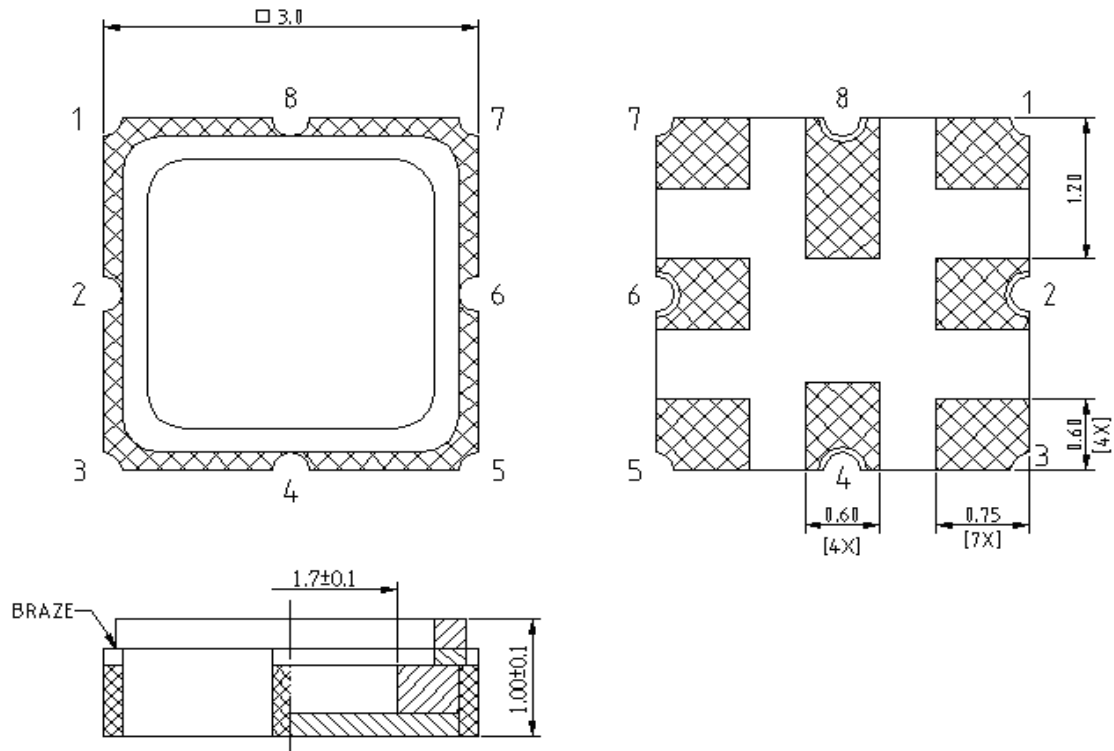
Terminating load impedance: $Z_L = 150\Omega // 50nH$

Characteristics	Value			Note
	Min.	Typ.	Max.	
Center frequency Fc (MHz)	-	942.5	-	-
Insertion loss (925 ~ 960MHz) IL (dB)	-	2.8	3.8	-
Ripple (925 ~ 960MHz) (dB)	-	1.0	2.0	-
VSWR (925 ~ 960MHz)	-	2.0	2.5	-
Attenuation: (Reference level from 0dB)				
0 ~ 880MHz (dB)	50	52	-	-
880 ~ 905MHz (dB)	28	44	-	-
905 ~ 915MHz (dB)	16	27	-	-
980 ~ 1000MHz (dB)	20	27	-	-
1000 ~ 1050MHz (dB)	28	32	-	-
1050 ~ 1500MHz (dB)	50	54	-	-
1500 ~ 2130MHz (dB)	45	56	-	-
2130 ~ 3000MHz (dB)	40	55	-	-
3000 ~ 4050MHz (dB)	35	52	-	-
4050 ~ 5700MHz (dB)	23	36	-	-
Symmetry in band (referenced to the matched operating condition)				
Output amplitude balance ($ S_{31}/S_{21} $) (925 ~ 960MHz) (dB)	-1.5	0	1.5	
Output phase balance ($\Phi(S_{31})-\Phi(S_{21})+180^\circ$) (925 ~ 960MHz) degree	-12	0	12	

SAW Filter 942.5MHz
Part No: MA06221

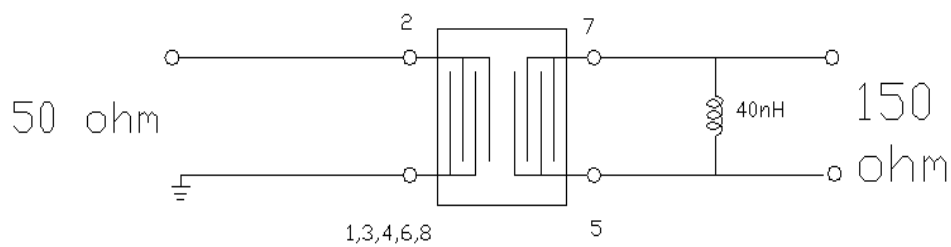
Model: TA0230A
Rev No: 2

C. OUTLINE DRAWING:



- 2: Input unbalanced
 - 1, 3: Input ground
 - 5, 7: Output balanced
 - 1, 3, 4, 8, 6: case ground
- Unit: mm

D. MEASUREMENT CIRCUIT:

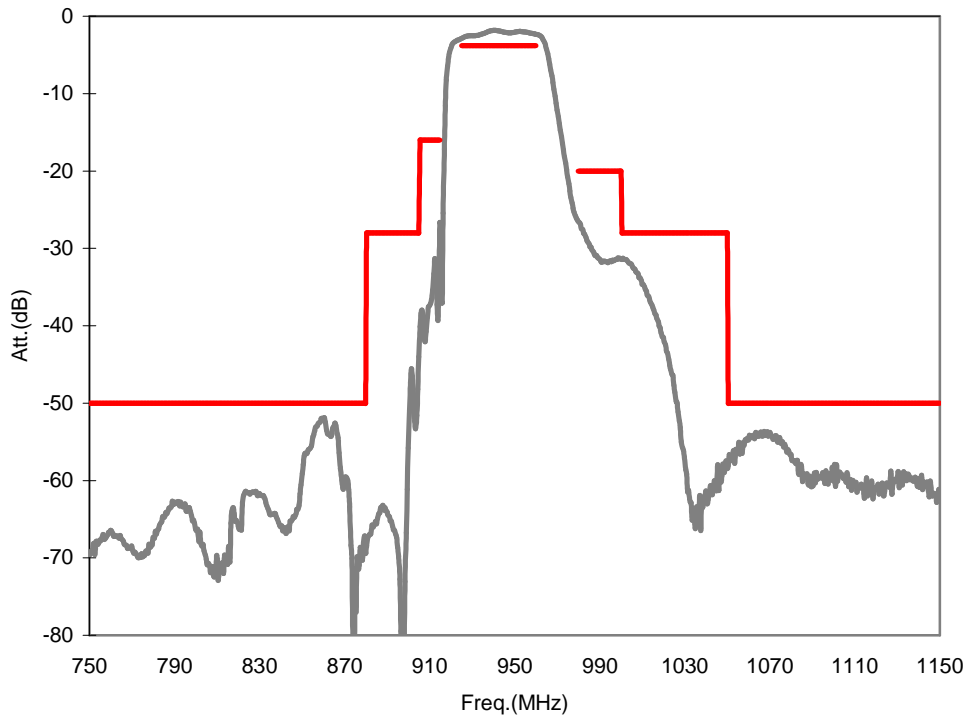


SAW Filter 942.5MHz
Part No: MA06221

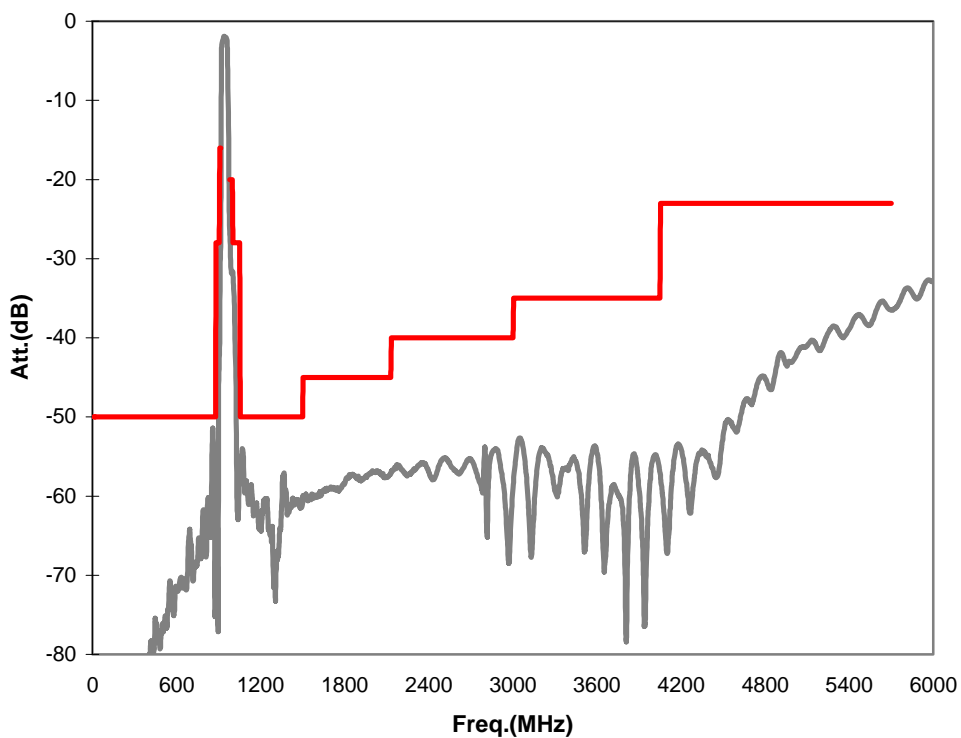
Model: TA0230A
Rev No: 2

E. FREQUENCY CHARACTERISTICS:

1. Transfer function (25°C)



2. wideband

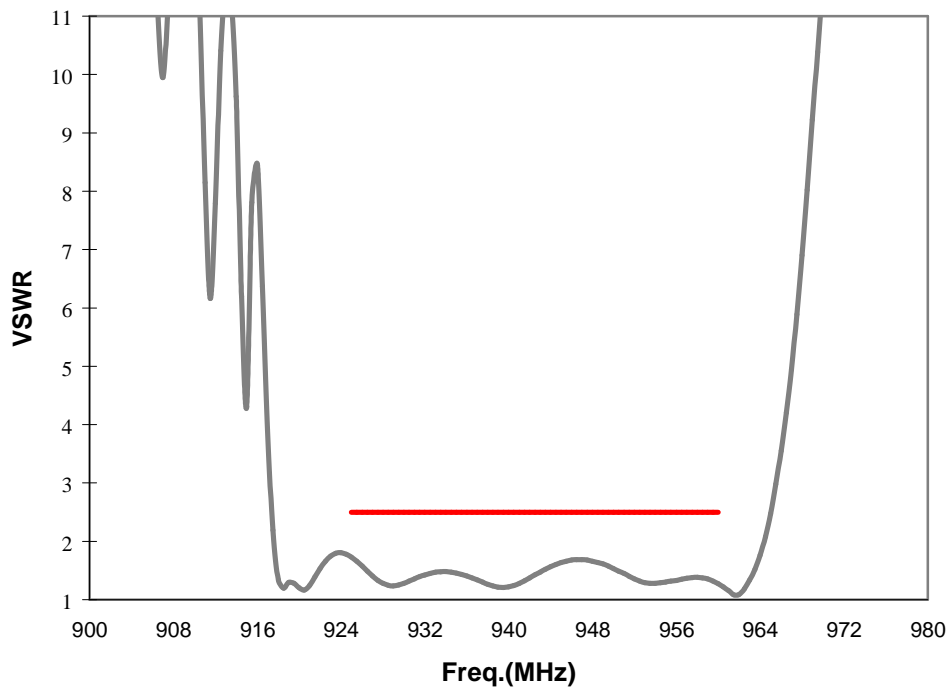


SAW Filter 942.5MHz
Part No: MA06221

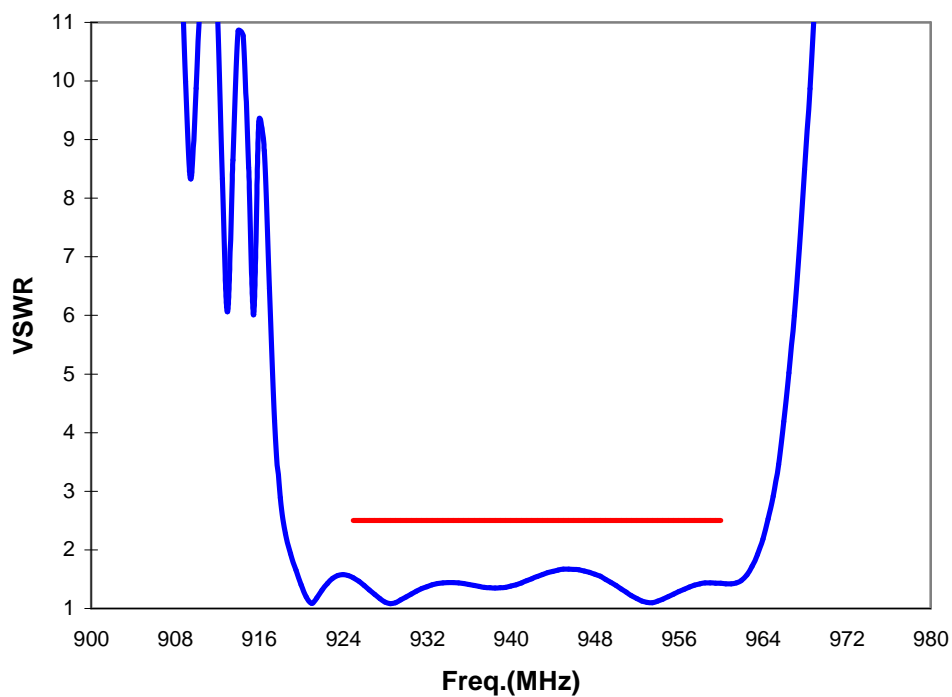
Model: TA0230A
Rev No: 2

3. VSWR (25°C)

Input



Output

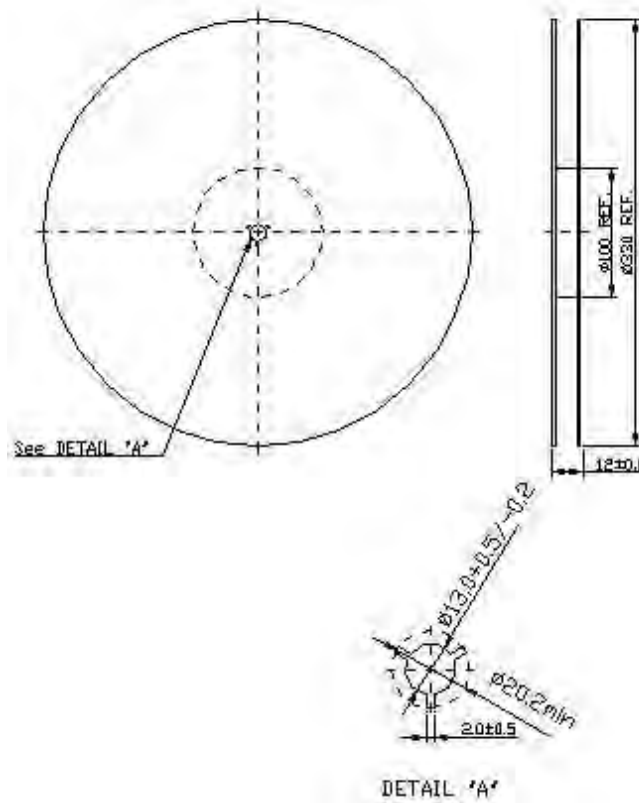


SAW Filter 942.5MHz
Part No: MA06221

Model: TA0230A
Rev No: 2

F. PACKING:

1. REEL DIMENSION



2. TAPE DIMENSION

