

**SAW Resonator 915.0MHz**  
**Part No: MA06291**

**Model: TC0234A**  
**REV. NO.: 1**

**A. FEATURES:**

1. 1-Port Resonator.

**B. MAXIMUM RATING:**

1. Input Power Level: 0 dBm
2. DC voltage: 12 V
3. Operating Temperature: -40°C to +85°C
4. Storage Temperature: -40°C to +85°C

**C. ELECTRICAL CHARACTERISTICS:**

Reference Temperature  $T_A=25^\circ\text{C}$

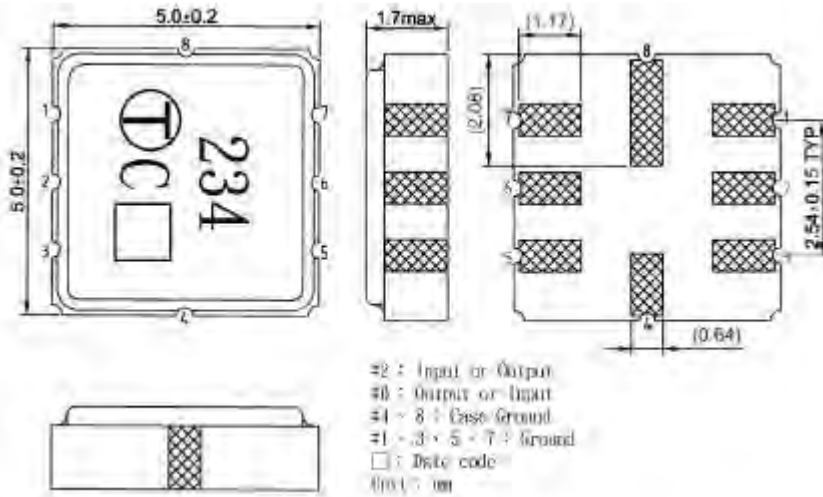
Characteristic	Units	Minimum	Typical	Maximum
Center frequency $f_c$	MHz	914.850	915	915.150
Insertion Loss IL	dB	-	1.1	2.0
Unload quality factor $Q_U$		5000	6200	-
Ageing of $f_c$	ppm/yr	-	-	10
Motional capacitance $C_1$	fF	-	1.39	-
Motional inductance $L_1$	$\mu\text{H}$	-	21.8	-
Motional resistance $R_1$	Ohm	-	20.3	-
Parallel capacitance $C_0$	pF	-	2.6	-
Frequency Temperature coefficient ( $TC_f$ )	ppm/c*2	-	0.032	-
Turnover $T_0$	deg.C	10	25	40
Package size	SMD 5X5X1.4mm			

Temperature dependence of  $f_c$ :  $f_c(T_A)=f_c(T_0)(1+TC_f(T_A-T_0)^2)$

**SAW Resonator 915.0MHz**  
**Part No: MA06291**

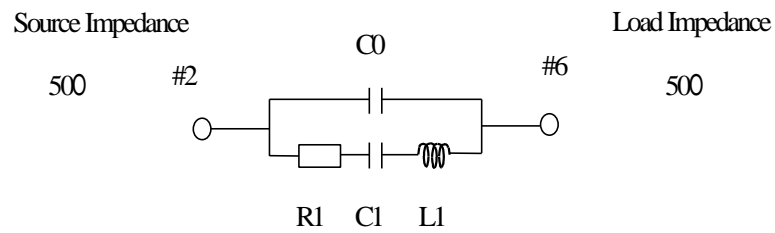
**Model: TC0234A**  
**REV. NO.: 1**

**D. OUTLINE DRAWING:**



**E. EQUIVALENT CIRCUIT:**

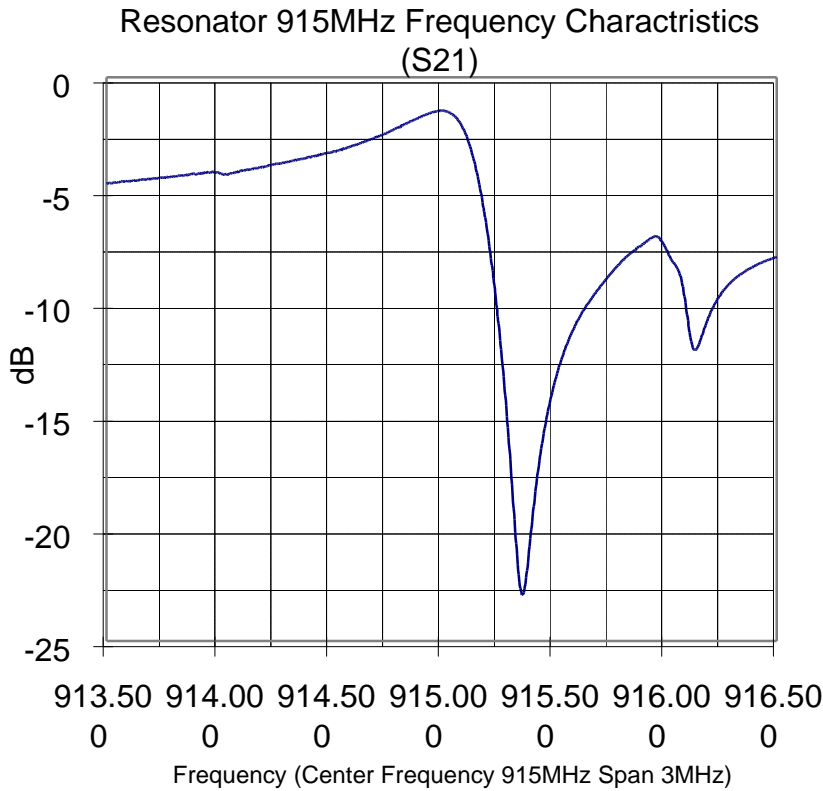
One-Port Resonator:



**SAW Resonator 915.0MHz**  
**Part No: MA06291**

**Model: TC0234A**  
**REV. NO.: 1**

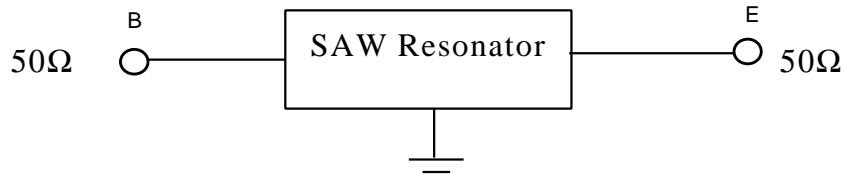
**F. FREQUENCY CHARACTERISTICS:**



**G. TEST CIRCUIT:**

Network analyzer

From 50Ω  
 Network  
 Analyzer



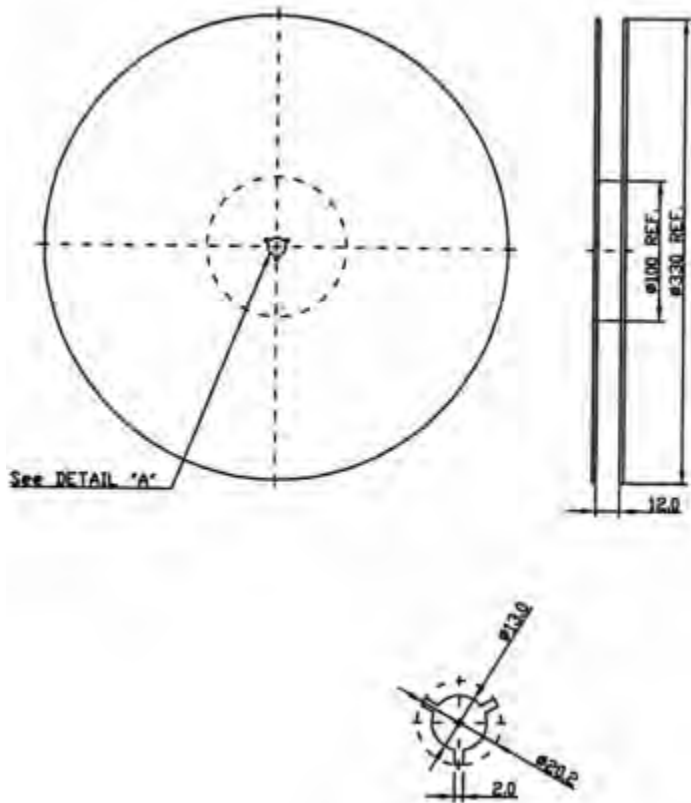
To 50Ω  
 Network  
 Analyzer

**SAW Resonator 915.0MHz**  
Part No: **MA06291**

**Model: TC0234A**  
REV. NO.: 1

**H. PACKING:**

1. REEL DIMENSION



2. TAPE DIMENSION

