

SAW Filter 868.35MHz
Part No: MA07052

Model: TD0110A
REV. NO.: 2

A. FEATURES:

1. 2-Port Resonator.

B. MAXIMUM RATING:

1. Input Power Level: 0 dBm
2. DC voltage: 12 V
3. Operating Temperature: -40°C to +85°C
4. Storage Temperature: -40°C to +85°C

C. ELECTRICAL CHARACTERISTICS:

Reference Temperature $T_A=25^\circ\text{C}$

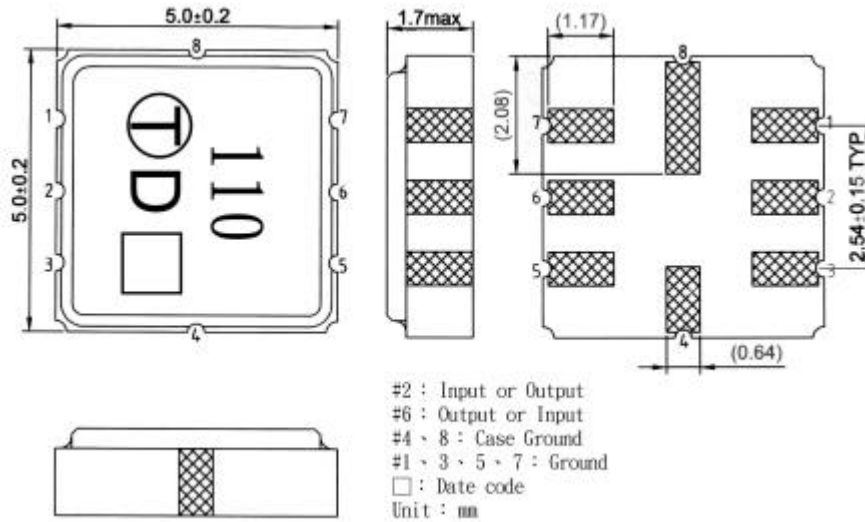
Characteristic	Units	Minimum	Typical	Maximum
Center frequency f_c	MHz	868.250	868.350	868.450
Insertion Loss IL	dB	-	6.7	9
Unload quality factor Q_U		4000	4900	-
Ageing of f_c	ppm/yr	-	-	10
Motional capacitance C_1	fF	-	0.334	-
Motional inductance L_1	μH	-	101.1	-
Motional resistance R_1	Ohm	-	112.4	-
Parallel capacitance C_o	pF	-	1.6	-
Frequency Temperature coefficient (TC_f)	ppm/c*2	-	0.032	-
Turnover T_o	deg.C	10	25	40
Package size		SMD5X5		

Temperature dependence of f_c : $f_c(T_A)=f_c(T_o)(1+TC_f(T_A-T_o)^2)$

SAW Filter 868.35MHz
Part No: MA07052

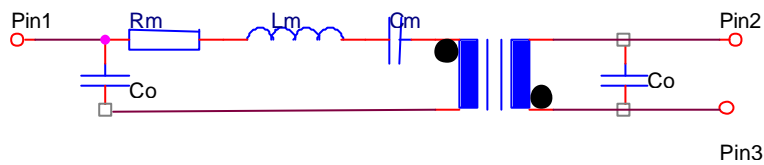
Model: TD0110A
REV. NO.: 2

D. OUTLINE DRAWING:



E. EQUIVALENT CIRCUIT:

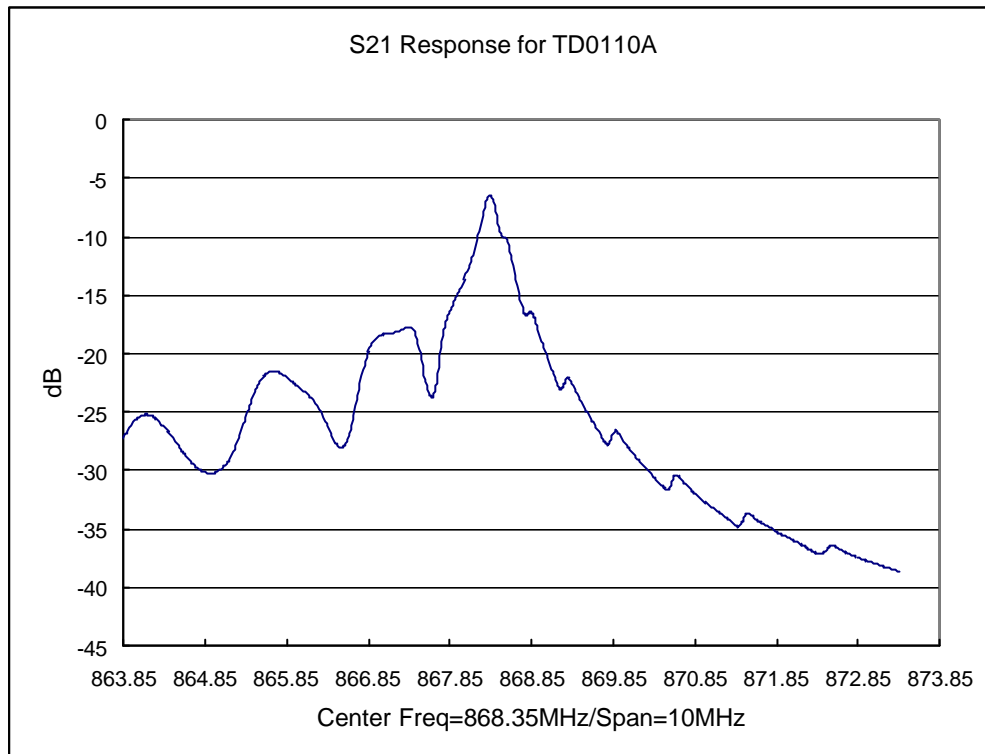
Two-Port Resonator:



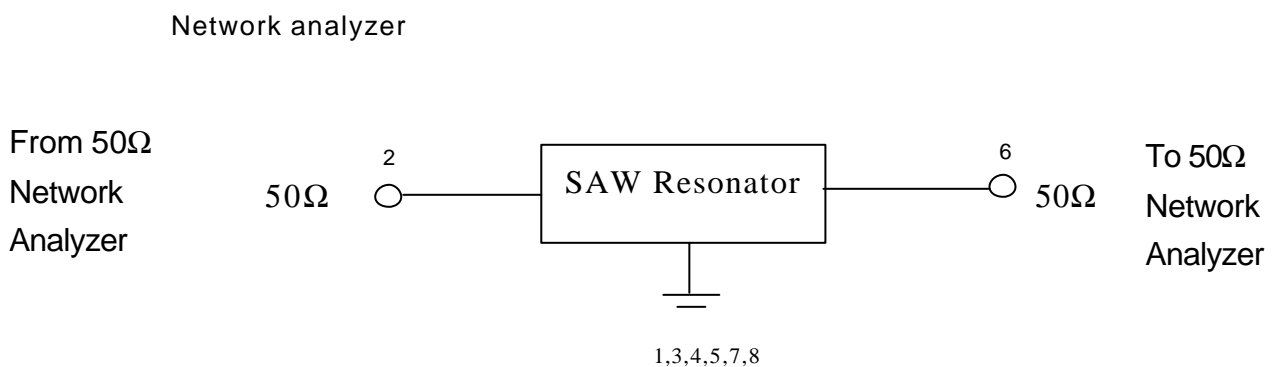
SAW Filter 868.35MHz
Part No: MA07052

Model: TD0110A
REV. NO.: 2

F. FREQUENCY CHARACTERISTICS:



G. TEST CIRCUIT:

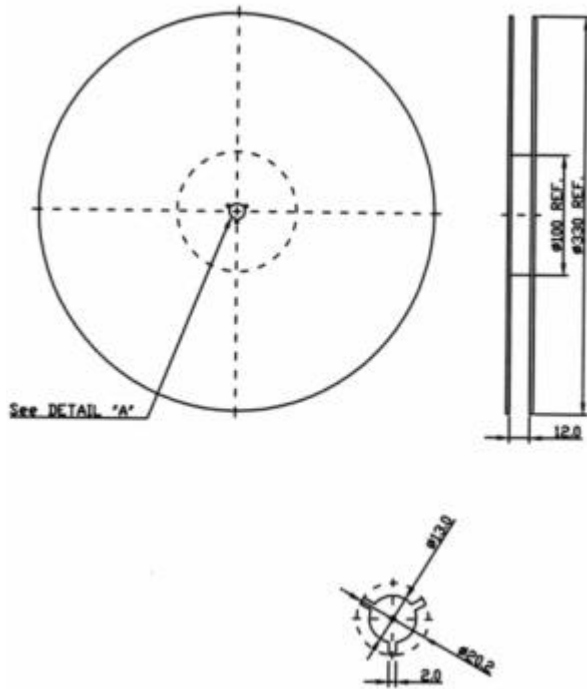


SAW Filter 868.35MHz
Part No: MA07052

Model: TD0110A
REV. NO.: 2

H. PACKING:

1. REEL DIMENSION



2. TAPE DIMENSION

