

1575.420MHz SAW Filter
Part No: MA07466

Model: TA0440A
REV NO.: 3

A. MAXIMUM RATING:

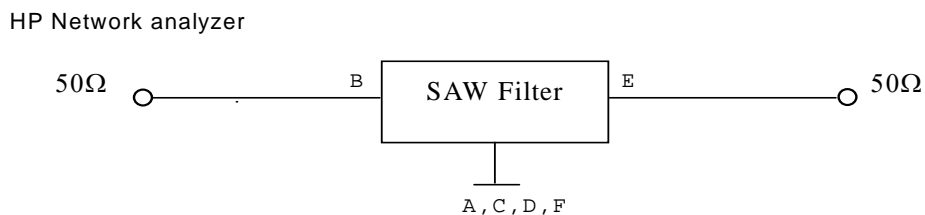
1. Input Power Level: 10 dBm
2. DC voltage: 5 V
3. Operating Temperature: -40°C to +85°C
4. Storage Temperature: -50°C to +100°C

B. ELECTRICAL CHARACTERISTICS:

Item	Min.	Typ.	Max.
Center frequency Fc (dB)	-	1575.42	-
Insertion loss (1574.42~1576.42 MHz) IL (dB)	-	2.9	4.0
Amplitude ripple (1574.42~1576.42 MHz) (dB)	-	0.1	1.5
Attenuation (Reference level from 0 dB)			
1 ~ 890 MHz (dB)	40	60	-
890 ~ 1475 MHz (dB)	36	55	-
1475.42 MHz (dB)	36	50	-
1535.42 MHz (dB)	29	50	-
1615.42 MHz (dB)	25	42	-
1675.42 MHz (dB)	40	55	-
1700 ~ 3000 MHz (dB)	25	38	-
Input/Output VSWR (1574.42~1576.42 MHz)	-	1.55	2.5
Source impedance Zs (Ω)	-	50	-
Load impedance ZL (Ω)	-	50	-

Note1. The standard definitions is in JIS C 6703

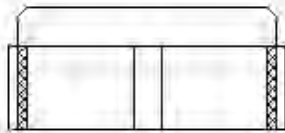
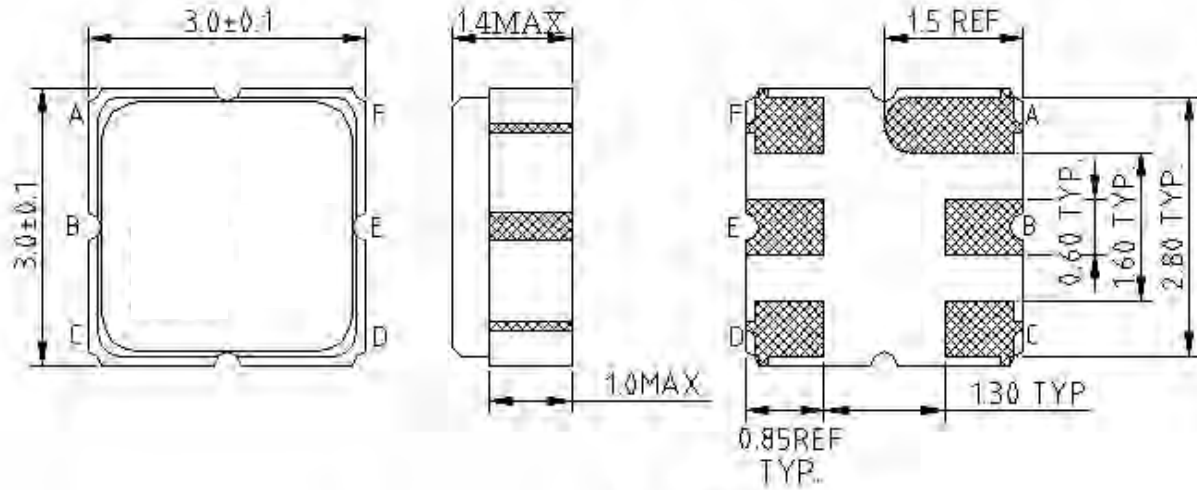
C. MEASUREMENT CIRCUIT:



1575.420MHz SAW Filter
Part No: MA07466

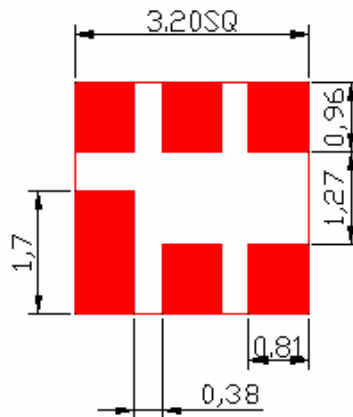
Model: TA0440A
REV NO.: 3

D. OUTLINE DRAWING:



B: Input
 E: Output
 A,C,D,F: Ground

E. PCB FOOTPRINT:

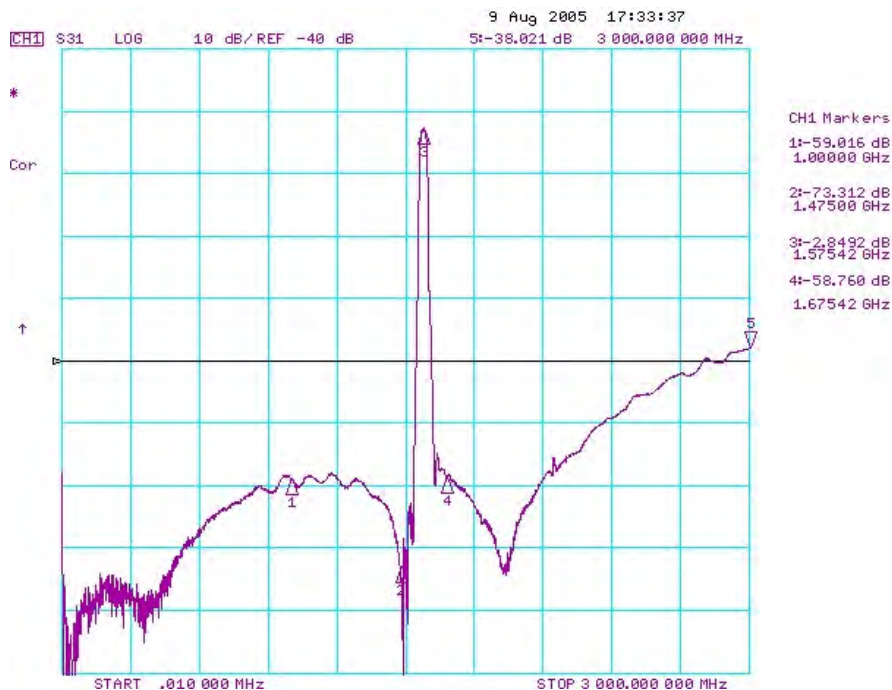
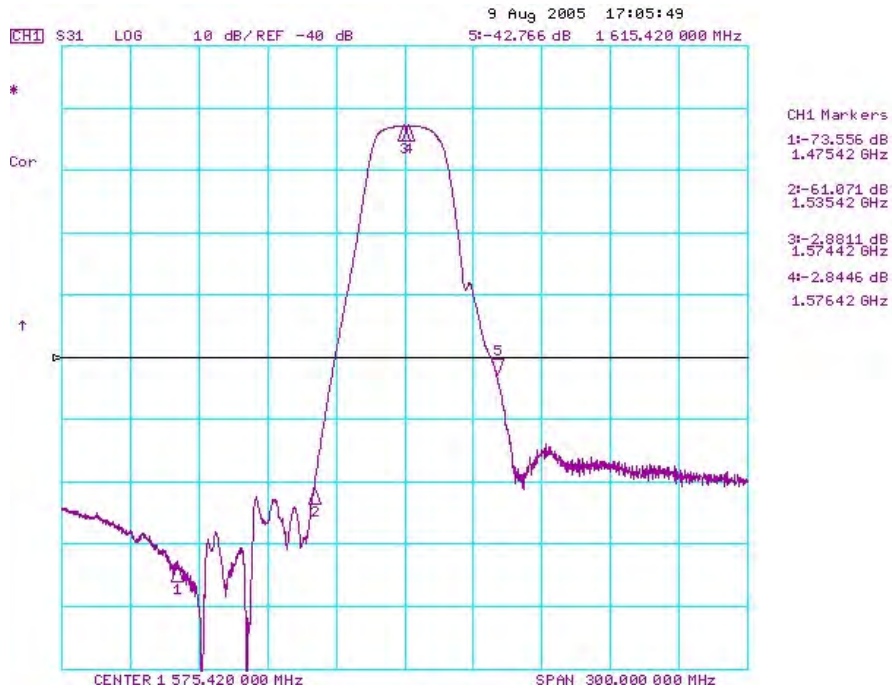


1575.420MHz SAW Filter
Part No: MA07466

Model: TA0440A
REV NO.: 3

F. FREQUENCY CHARACTERISTICS:

Transfer function

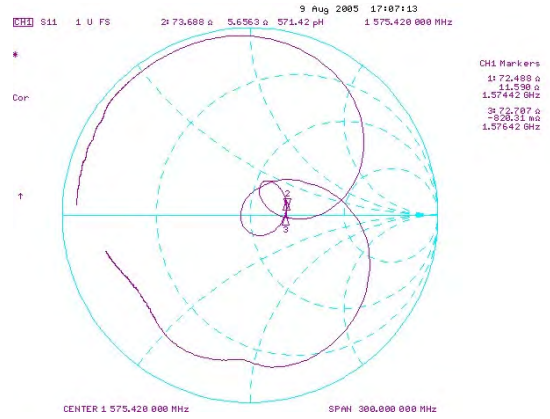
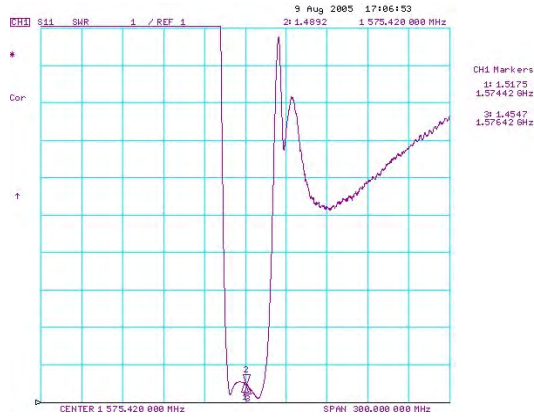


1575.420MHz SAW Filter
Part No: MA07466

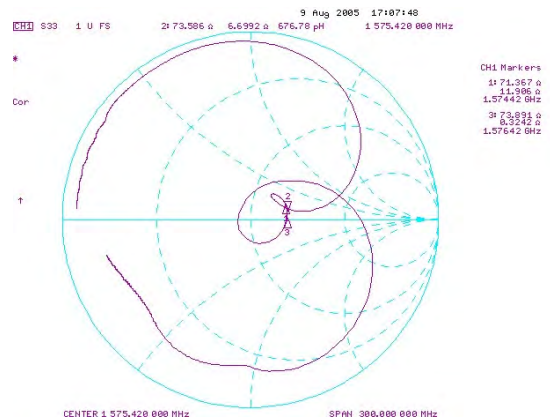
Model: TA0440A
REV NO.: 3

Reflection Functions :

S11



S22

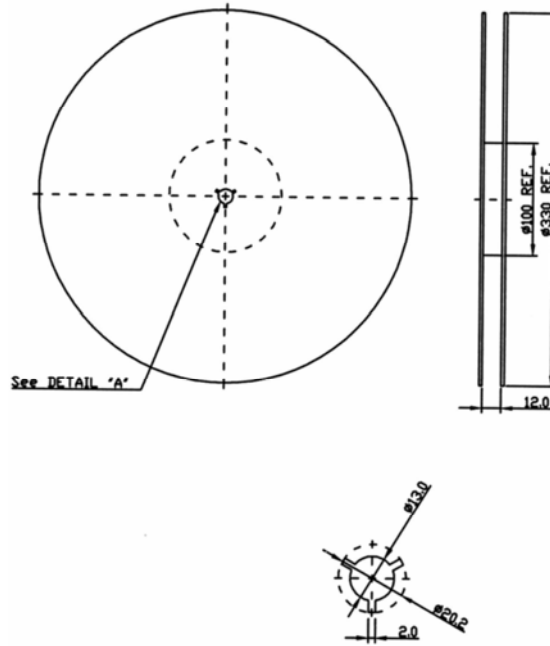


1575.420MHz SAW Filter
Part No: MA07466

Model: TA0440A
REV NO.: 3

G. PACKING:

1. REEL DIMENSION



2. TAPE DIMENSION

