

SAW Filter 415.40MHz

Model: TA0526A

Part No: MA07611

REV. NO.: 1

A. MAXIMUM RATING:

1. Input Power Level: 10 dBm
2. DC voltage: 3 V
3. Operating Temperature: +15°C to +35°C
4. Storage Temperature: -40°C to +85°C

B. ELECTRICAL CHARACTERISTICS:

Balanced to Balanced operation

Terminating source impedance : $Z_s = 200\Omega$

Terminating load impedance : $Z_L = 200\Omega$

Item		Min.	Typical	Max.
Center frequency	Fc MH	-	415.4	-
Insertion loss	412.9 ~ 417.9 MHz IL dB	-	2.2	3.6
Amplitude ripple	412.9 ~ 417.9 MHz dB	-	0.65	2.1
VSWR	412.9 ~ 417.9 MHz dB	-	1.3	2.2
Attenuation (Reference level from 0 Db)				
1 ~ 379.0	MHz dB	40	58	-
379.0 ~ 394.0	MHz dB	35	55	-
394.0 ~ 405.0	MHz dB	10	40	-
437.0 ~ 476.0	MHz dB	36	53	-
476.0 ~ 550.0	MHz dB	40	55	-
Temperature coefficient of frequency	ppm/k	-	-36	-

SAW Filter 415.40MHz

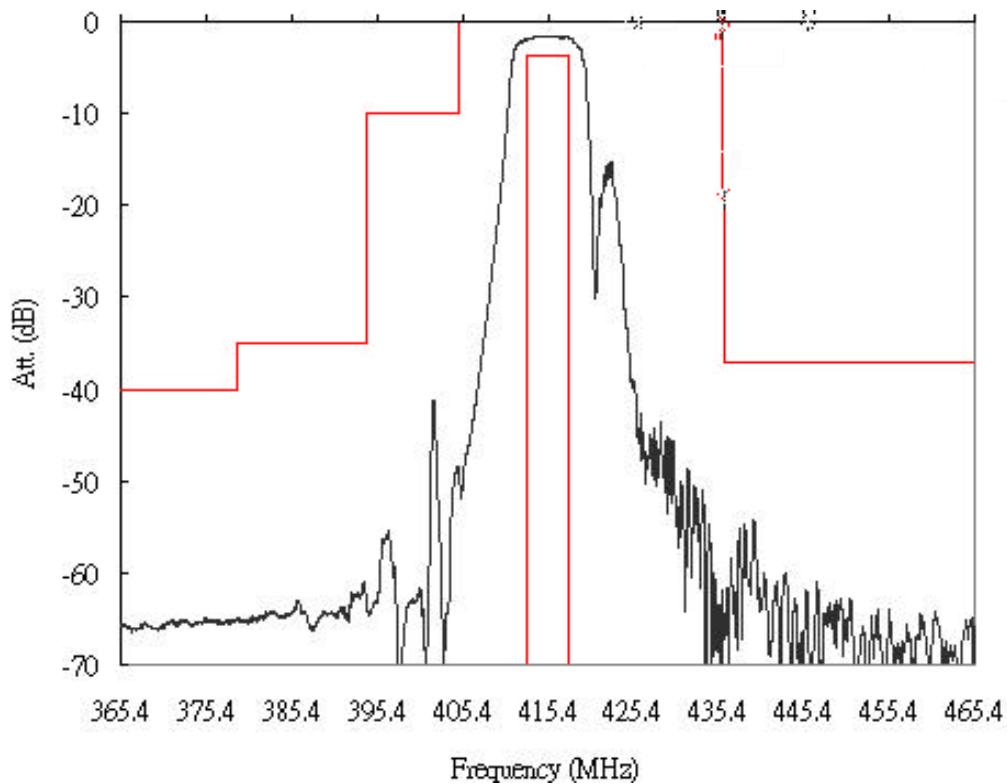
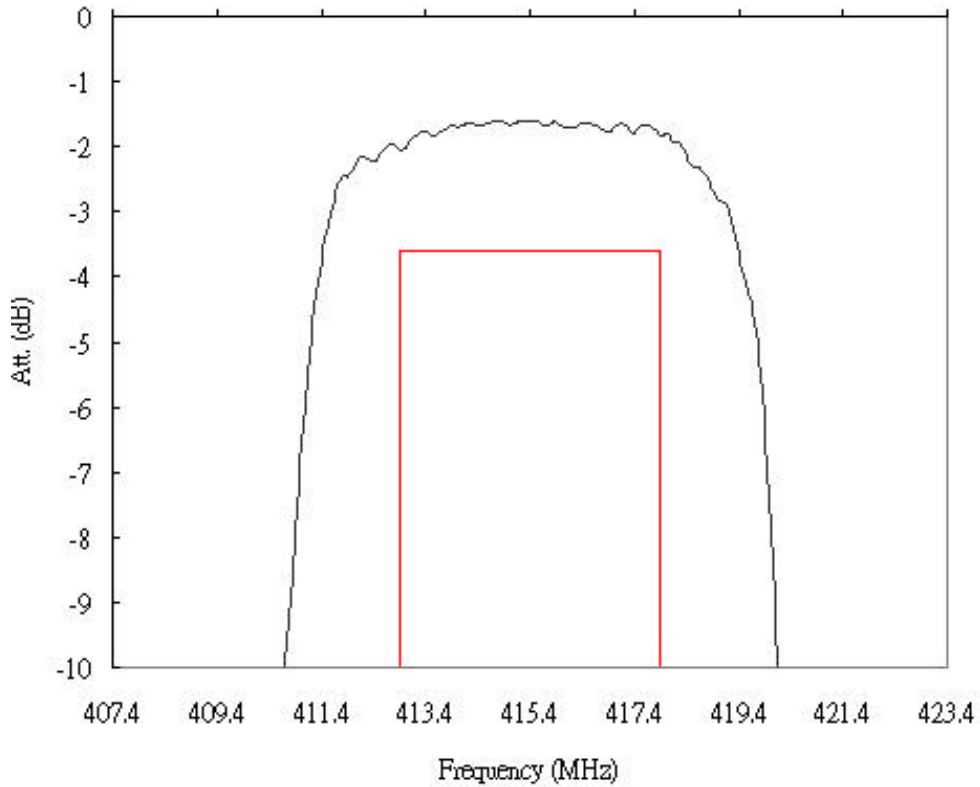
Model: TA0526A

Part No: MA07611

REV. NO.: 1

B. FREQUENCY CHARACTERISTICS:

Transfer Function:



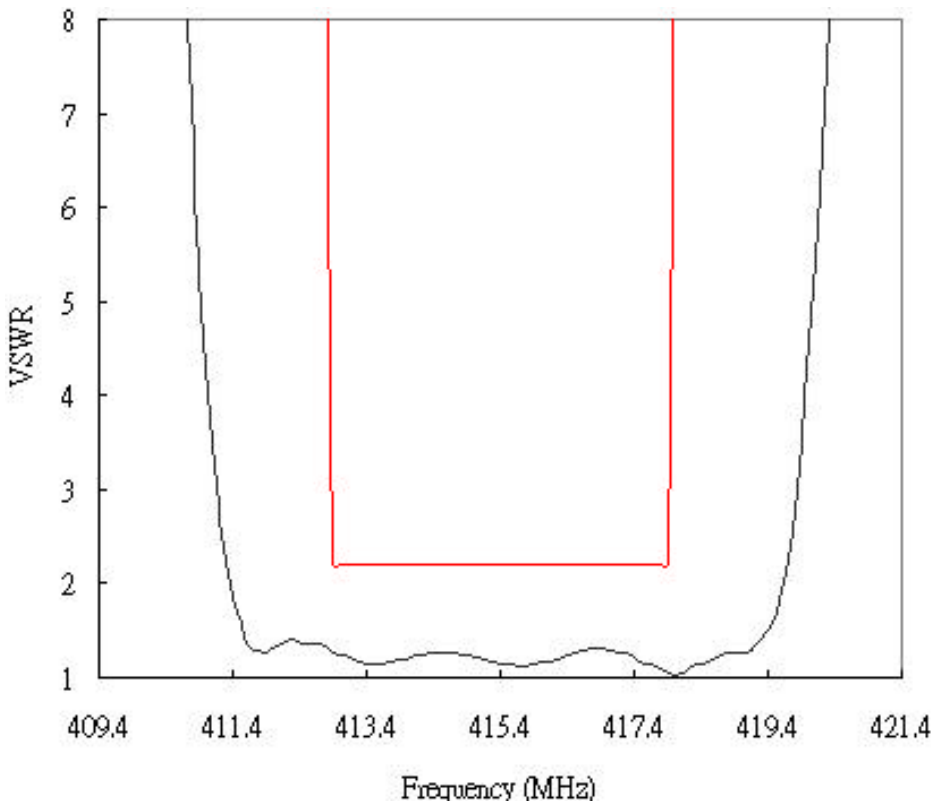
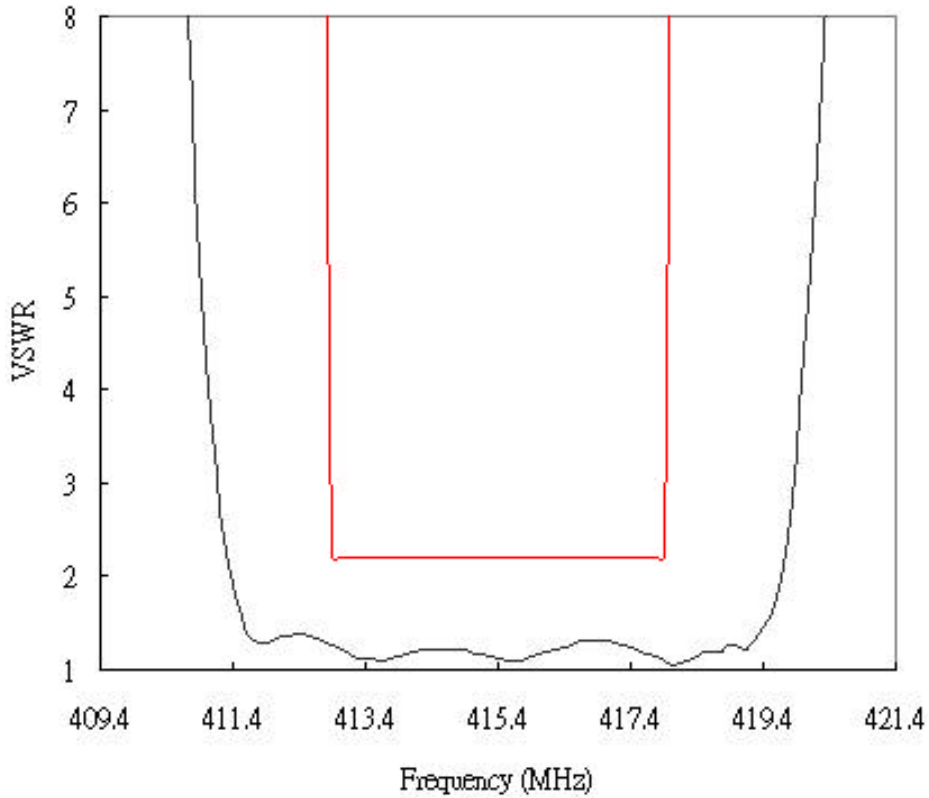
SAW Filter 415.40MHz

Model: TA0526A

Part No: MA07611

REV. NO.: 1

Reflection Function:



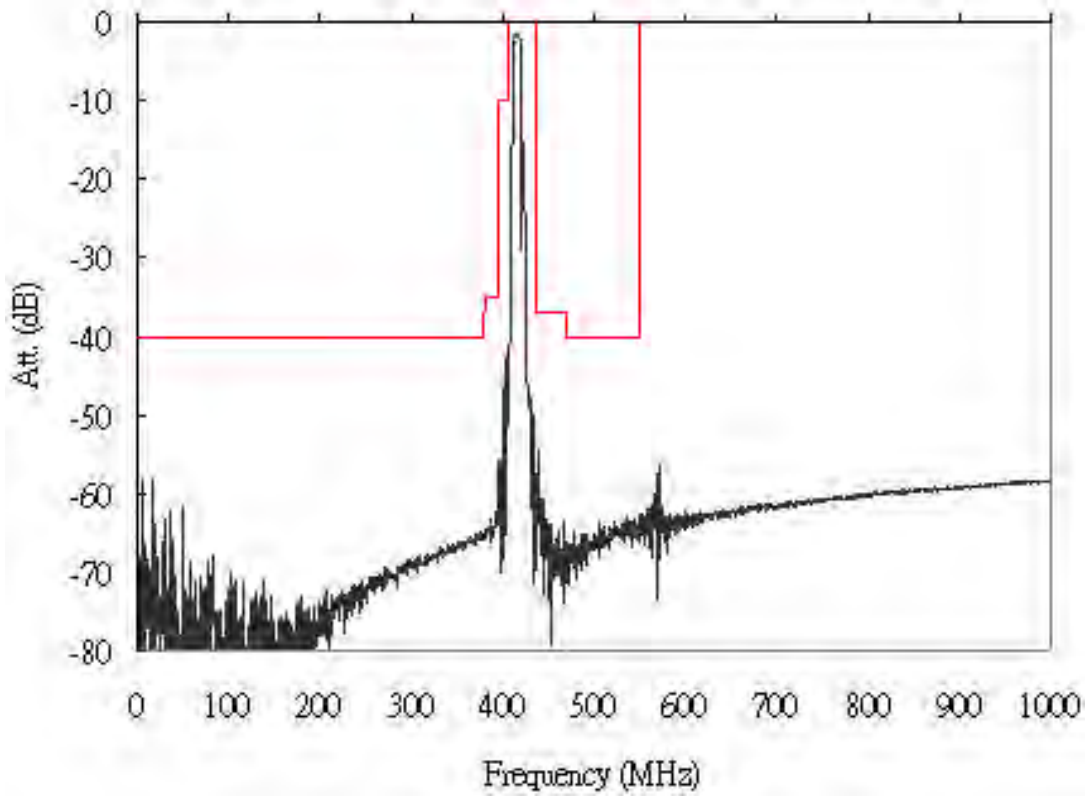
SAW Filter 415.40MHz

Model: TA0526A

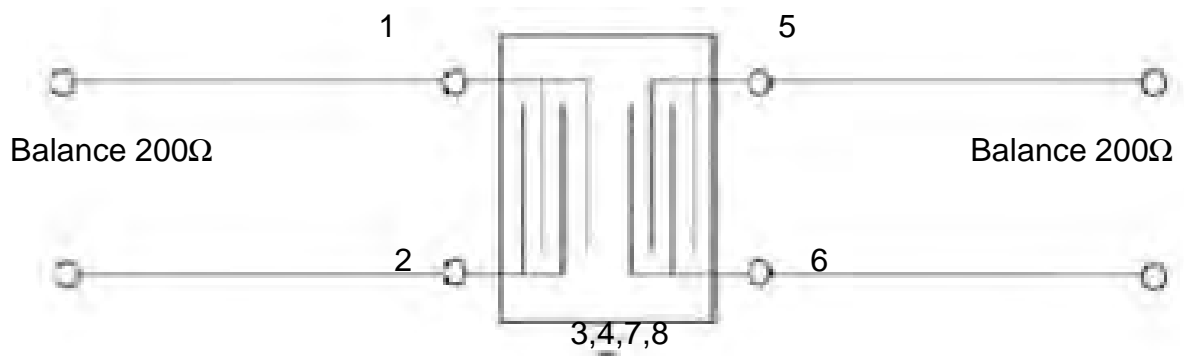
Part No: MA07611

REV. NO.: 1

Wideband



D. MEASUREMENT CIRCUIT:



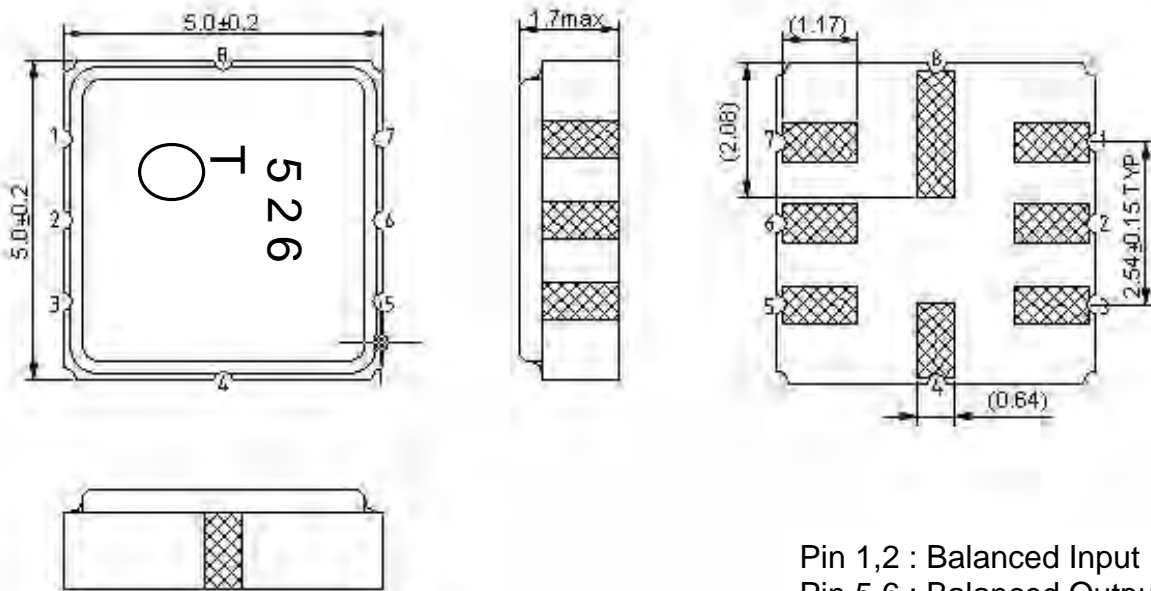
SAW Filter 415.40MHz

Model: TA0526A

Part No: **MA07611**

REV. NO.: 1

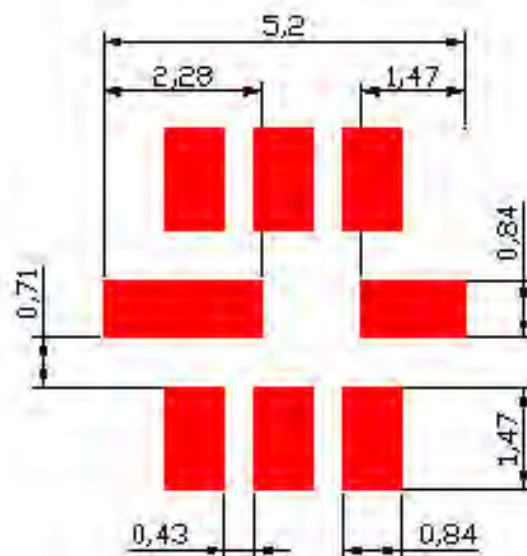
E. OUTLINE DRAWING:



Pin 1,2 : Balanced Input
 Pin 5,6 : Balanced Output
 Pin 3,4,7,8 : Ground
 Unit : mm

Year	2001	2002	2003	2004
	2005	2006	2007	2008
Year Code	A	a	A	a

F. PCB FOOTPRINT:



SAW Filter 415.40MHz

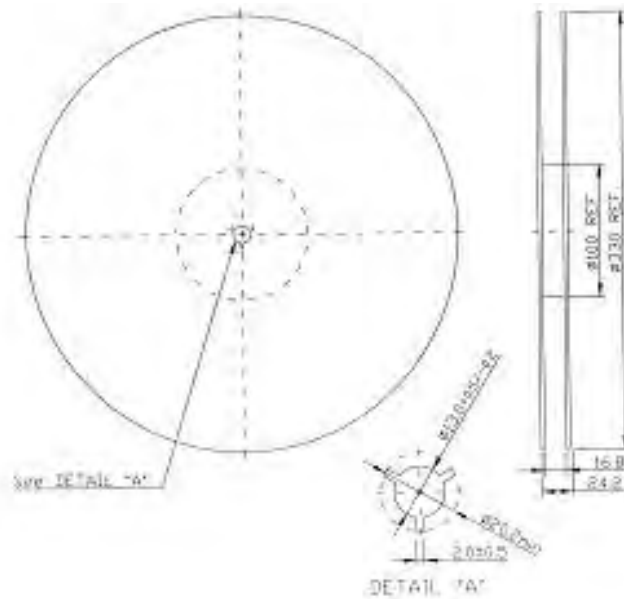
Model: TA0526A

Part No: MA07611

REV. NO.: 1

G. PACKING:

1. REEL DIMENSION



2. TAPE DIMENSION

