

SAW Filter 35.46MHz
Part No: MA07904

Model: TB0386A
Rev No: 1

A. MAXIMUM RATING:

1. Operating Temperature: -40°C ~ +85°C
2. Storage Temperature: -40°C ~ +85°C

B. CHARACTERISTICS:

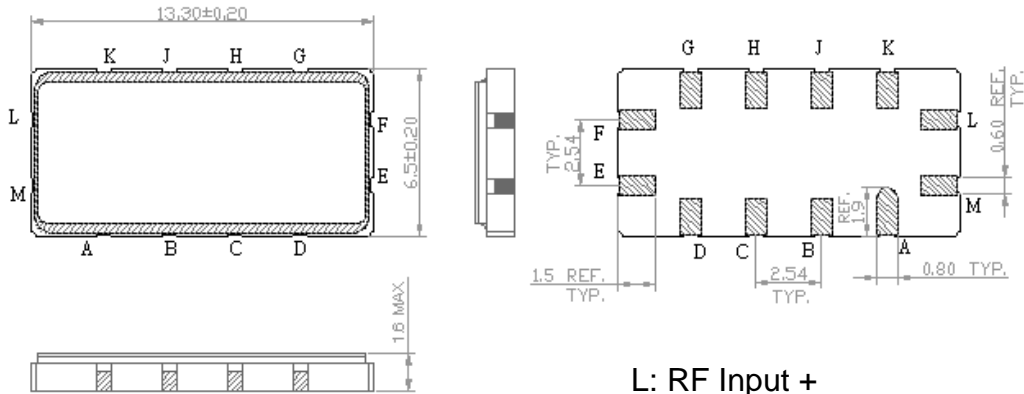
Ambient Temperature: 25°C

| Characteristics | Value | | | Note |
|--|-------|-------|------|------|
| | Min. | Typ. | Max. | |
| Center frequency Fc MHz | - | 35.46 | - | - |
| Maximum Insertion loss IL dB | - | 17.4 | 20.0 | - |
| 1dB Bandwidth MHz | - | 8.82 | | |
| 21dB Bandwidth MHz | - | 10.8 | 11.4 | |
| 30dB Bandwidth MHz | - | 11.4 | 12.0 | |
| Passband Ripple (Fc ± 4MHz) dB | - | 0.9 | 1.6 | - |
| Group Delay Ripple (Fc ± 4MHz) nS | - | 180 | 300 | - |
| Temp Coefficient ppm/°C | | -87 | | |
| Attenuation: (Reference level from minimum insertion loss) | | | | |
| 1. DC ~ 28MHz dB | 35 | 50 | - | - |
| 2. 28MHz ~ 29.46MHz dB | 30 | 46 | - | - |
| 3. 29.46MHz ~ 29.72MHz dB | 21 | 51 | | |
| 4. 41.46MHz ~ 45.00MHz dB | 15 | 29 | | |
| 5. 45MHz ~ 50MHz dB | 35 | 40 | | |
| 6. 50MHz ~ 110MHz dB | 15 | 26 | | |

SAW Filter 35.46MHz
Part No: MA07904

Model: TB0386A
Rev No: 1

C. OUTLINE DRAWING:



L: RF Input +
 M: RF Input -
 E: RF Output +
 F: RF Output -
 A, B, C, D, G, H, J, K: To be ground

D. FREQUENCY CHARACTERISTICS:

1. S21 Response

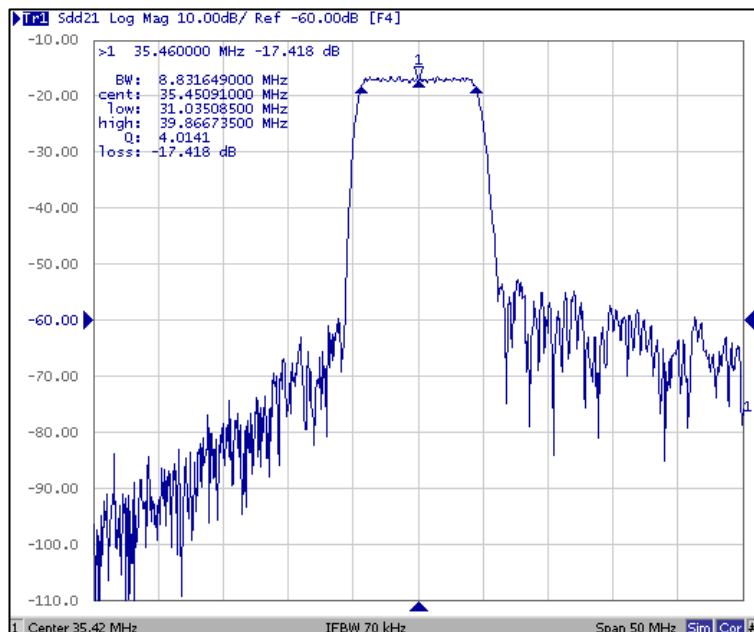


Fig 1. S21 Response Horizontal: 5MHz/Div Vertical: 10dB/Div

SAW Filter 35.46MHz
Part No: MA07904

Model: TB0386A
Rev No: 1

2. Pass band Ripple and Group Delay Ripple

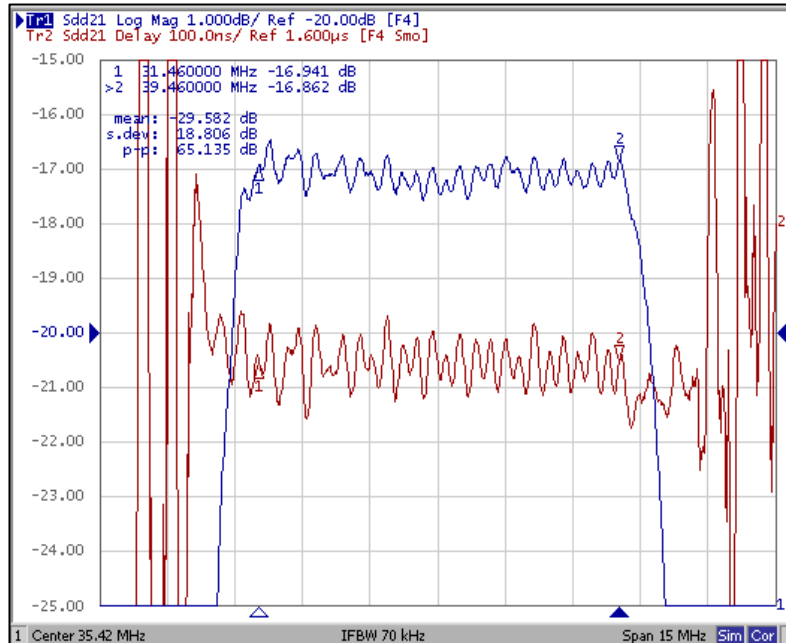


Fig 2. S21 Response Horizontal: 1.5MHz/Div Vertical: 1dB/Div
100ns/Div

3. Wideband Response

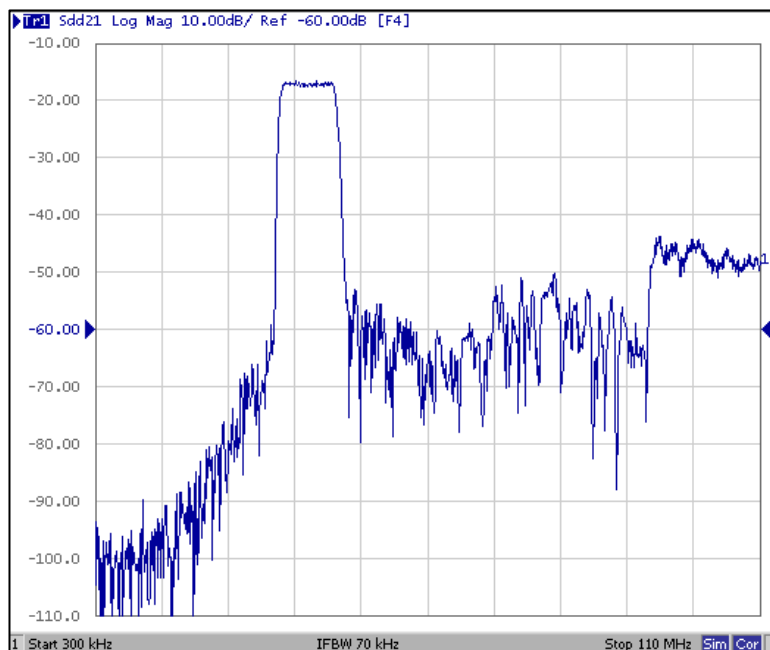
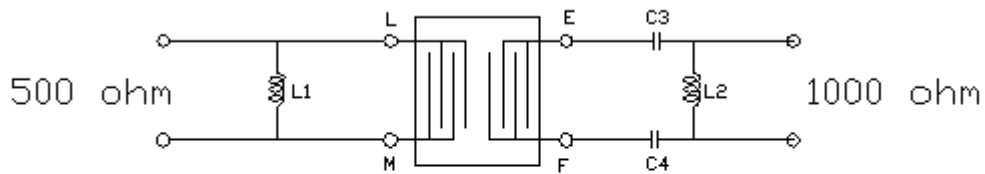


Fig 3. S21 Response Horizontal: 11MHz/Div Vertical: 1dB/Div

SAW Filter 35.46MHz
Part No: MA07904

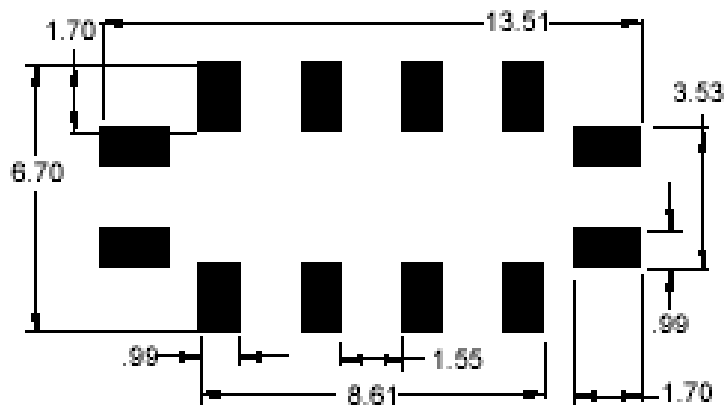
Model: TB0386A
Rev No: 1

E. TEST FIXTURE:



$C1=C2=100\text{pF}$ $L1=390\text{nH}$ $L2=1560\text{nH}$

F. PCB FOOTPRINT:

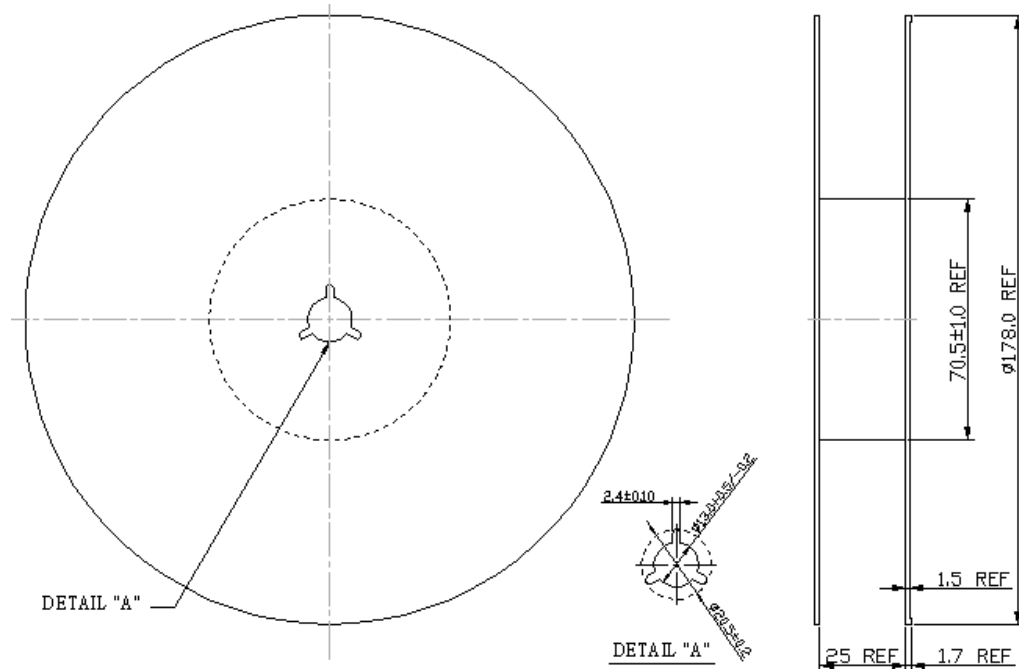


SAW Filter 35.46MHz
Part No: MA07904

Model: TB0386A
Rev No: 1

G. PACKING:

1. REEL DIMENSION



2. TAPE DIMENSION

