

SAW Resonator 669.4169MHz

Model: TC0236A

Part No: **MA08252**

REV. NO.: 2

A. FEATURES:

- 1-Port Resonator.

B. MAXIMUM RATING:

1. Input Power Level: 0 dBm
2. DC voltage: 12 V
3. Operating Temperature: -40 °C to +85 °C
4. Storage Temperature: -40 °C to +85 °C

C. ELECTRICAL CHARACTERISTICS:

Reference Temperature $T_A=25\text{ }^\circ\text{C}$

Characteristic	Units	Minimum	Typical	Maximum
Nominal Frequency, f_c	MHz	669.3869	669.4169	669.4469
Insertion Loss, IL	dB	-	1.3	2.5
Unload Quality Factor, Q_U		6000	8619	-
Aging of f_c	ppm/ yr	-	-	± 10
Equivalent Circuit Model				
Motional Capacitance, C_m	fF	-	1.79	-
Motional Inductance, L_m	μH	-	31.48	-
Motional Resistance, R_m	Ω	-	15.36	-
Shunt Static Capacitance, C_o	pF	-	2.96	-
Temp. Coefficient.	ppm/ $^\circ\text{C}^2$	-	0.032	-
Turnover Temperature, T_o	$^\circ\text{C}$	10	25	40
Package size		SMD 3.8x3.8x1.2 mm		

Temperature dependence of f_c : $f_c(T_A)=f_c(T_O)(1+TC_f(T_A-T_O)^2)$

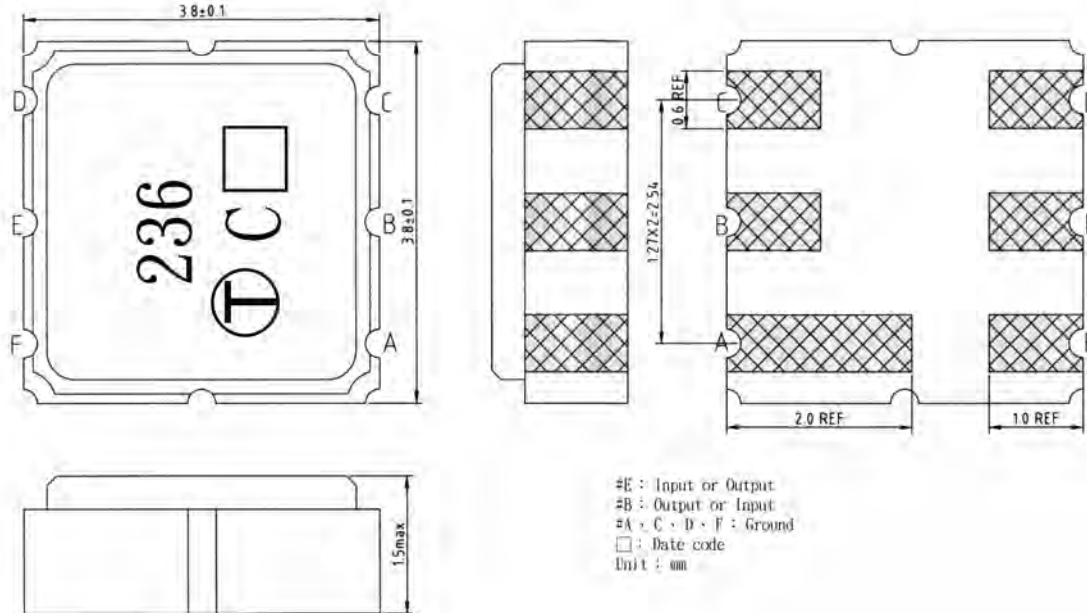
SAW Resonator 669.4169MHz

Model: TC0236A

Part No: **MA08252**

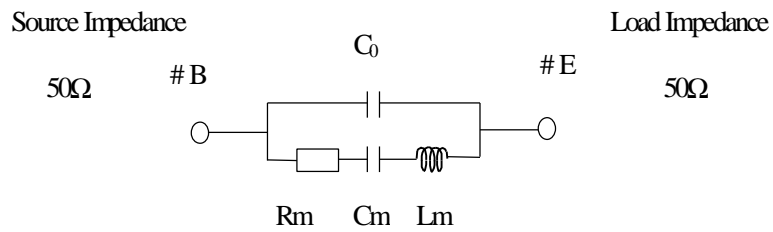
REV. NO.: 2

D. OUTLINE DRAWING:

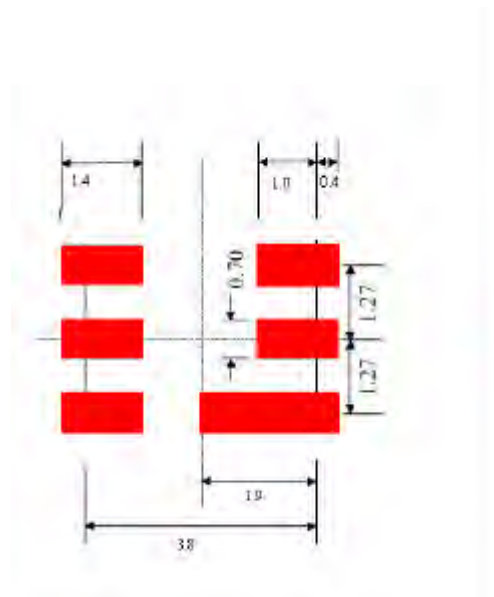


E. EQUIVALENT CIRCUIT MODEL:

One-Port Resonator:



F. PCB FOOTPRINT

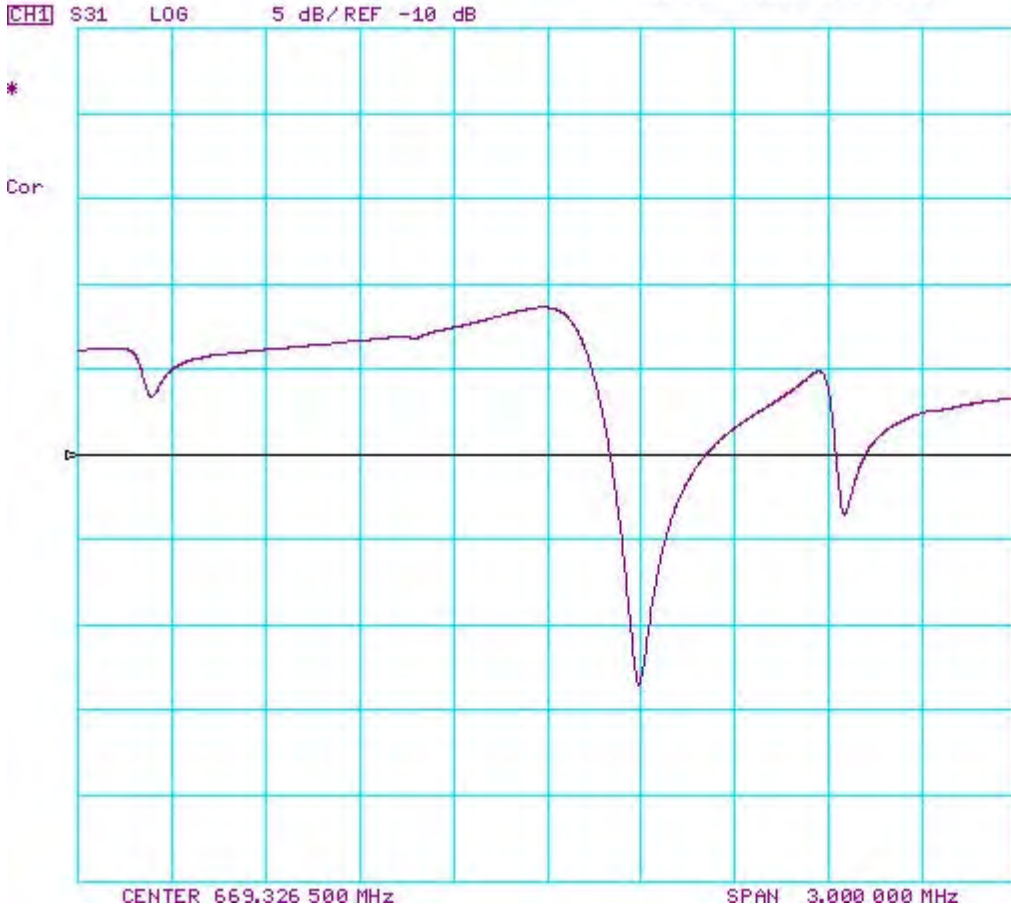


SAW Resonator 669.4169MHz
Part No: MA08252

Model: TC0236A
REV. NO.: 2

G. FREQUENCY CHARACTERISTICS:

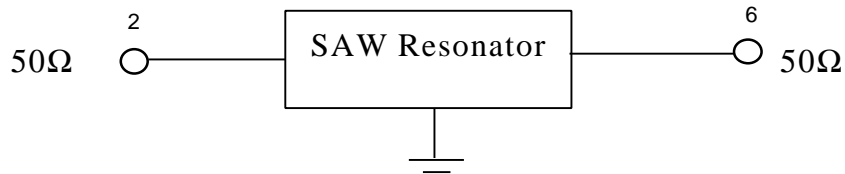
11 Dec 2003 09:14:39



H. TEST CIRCUIT:

Network analyzer

From 50Ω
 Network
 Analyzer



To 50Ω
 Network
 Analyzer

1? 3? 4? 5? 7? 8

SAW Resonator 669.4169MHz

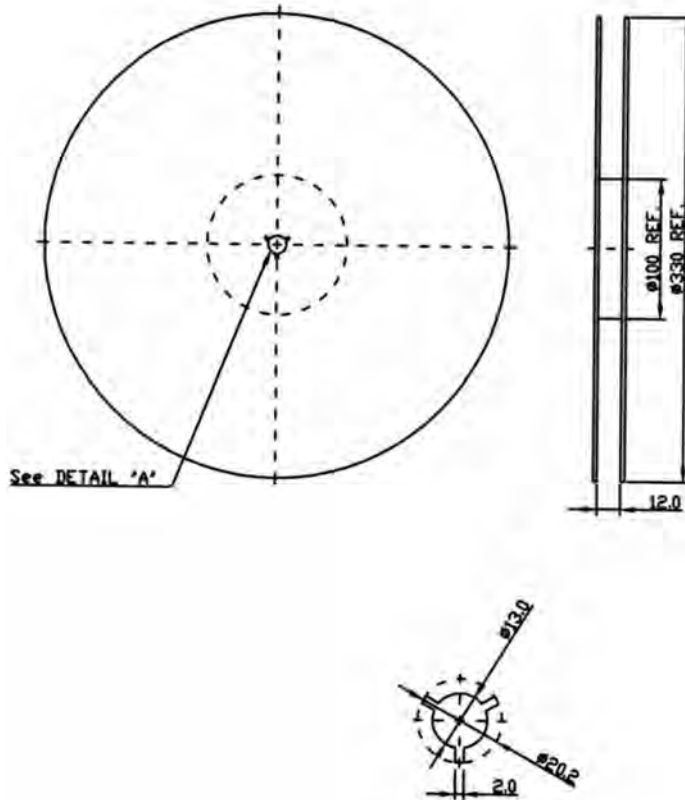
Model: TC0236A

Part No: **MA08252**

REV. NO.: 2

I. PACKING:

1. Reel dimension



2. Tape dimension

