

SAW Filter 1013.0MHz

Model: TA0477A

Part No: **MA08712**

REV. NO.: 1

A. MAXIMUM RATING:

1. Input Power Level: 10 dBm
2. DC voltage: 5 V
3. Operating Temperature: -30°C to 80°C
4. Storage Temperature: -40°C to +85° C

B. CHARACTERISTICS:

Item				Min.	Typ.	Max.
Center frequency	Fc	MHz		-	1013	-
Insertion loss	1012.5 ~ 1013.5	MHz	dB	-	3.0	4.5
VSWR	1012.5 ~ 1013.5	MHz		-	1.5	2.3
Attenuation (Reference level from 0dB)						
	888	MHz	dB	40	50	-
	913	MHz	dB	40	50	-
	993	MHz	dB	21	40	-
	1033	MHz	dB	21	34	-
	1113	MHz	dB	40	49	-
	1138	MHz	dB	40	49	-
Source impedance	Z _s		Ω	-	50	-
Load impedance	Z _L		Ω	-	50	-

Note1. No matching network required for operation at 50Ω

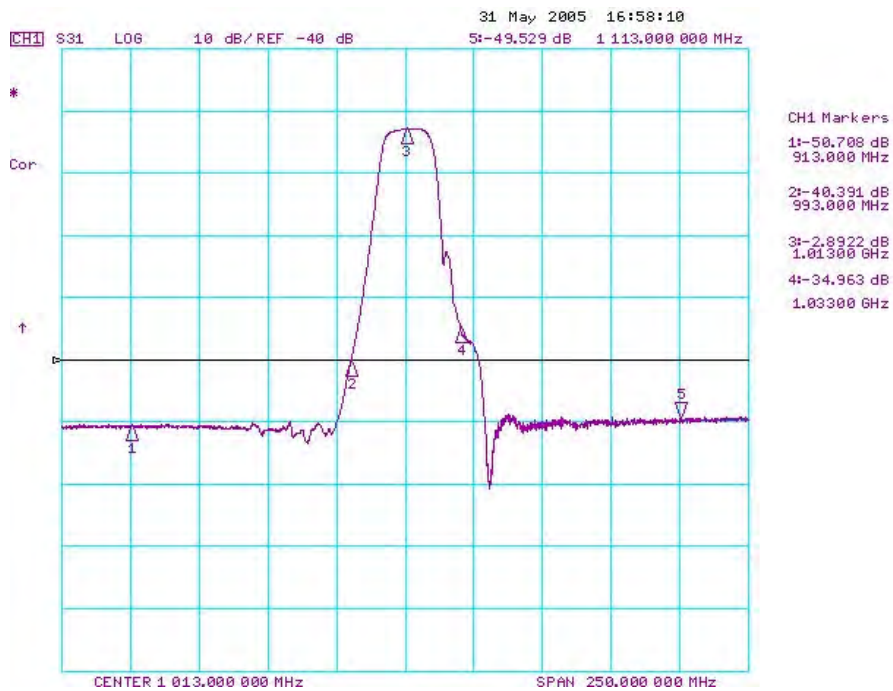
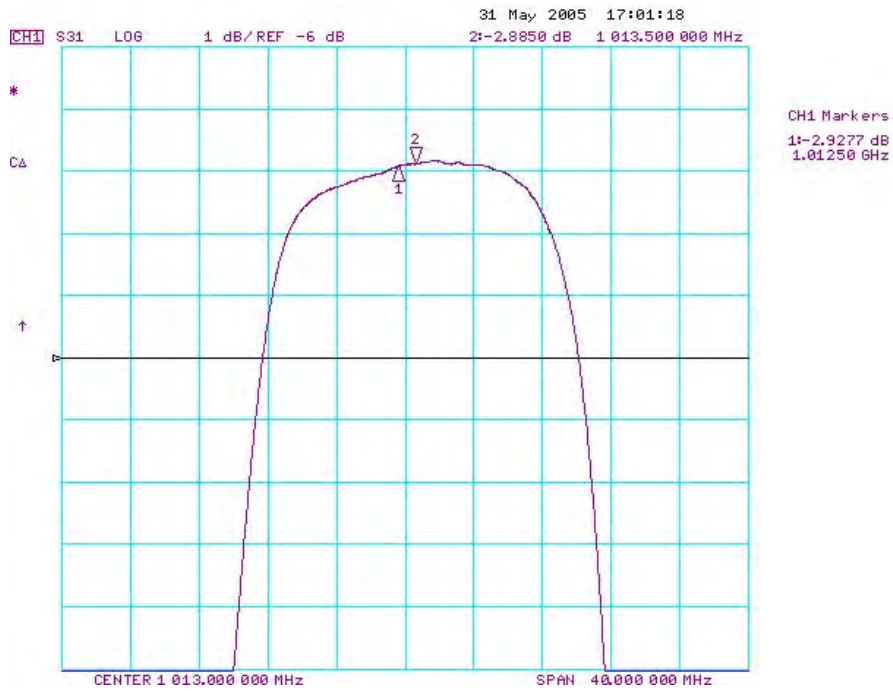
SAW Filter 1013.0MHz

Model: TA0477A

Part No: MA08712

REV. NO.: 1

C. TRANSFER FUNCTION:



SAW Filter 1013.0MHz

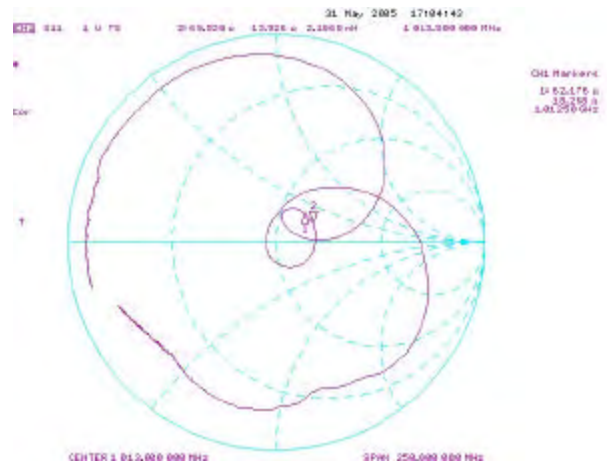
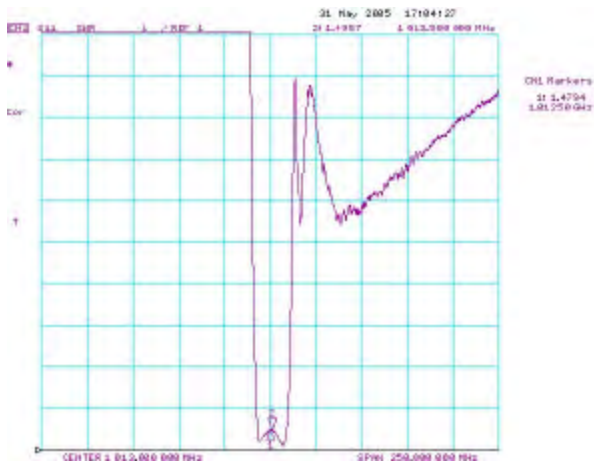
Model: TA0477A

Part No: MA08712

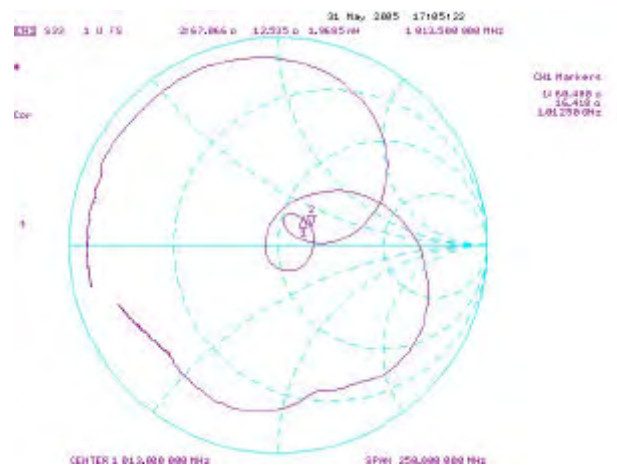
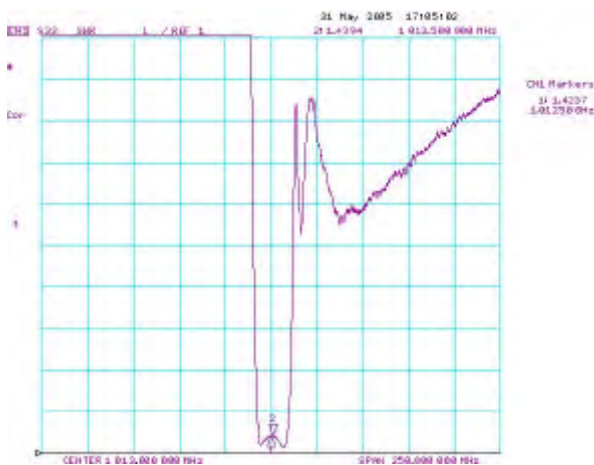
REV. NO.: 1

Reflection Function

S11



S22



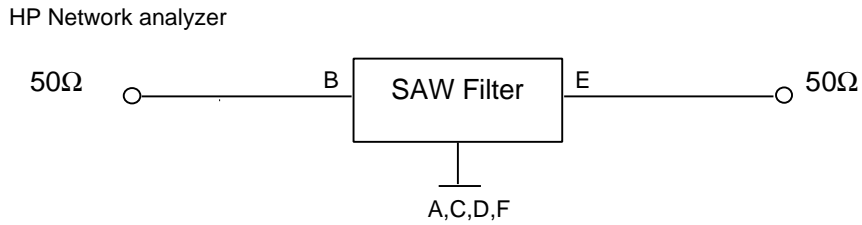
SAW Filter 1013.0MHz

Model: TA0477A

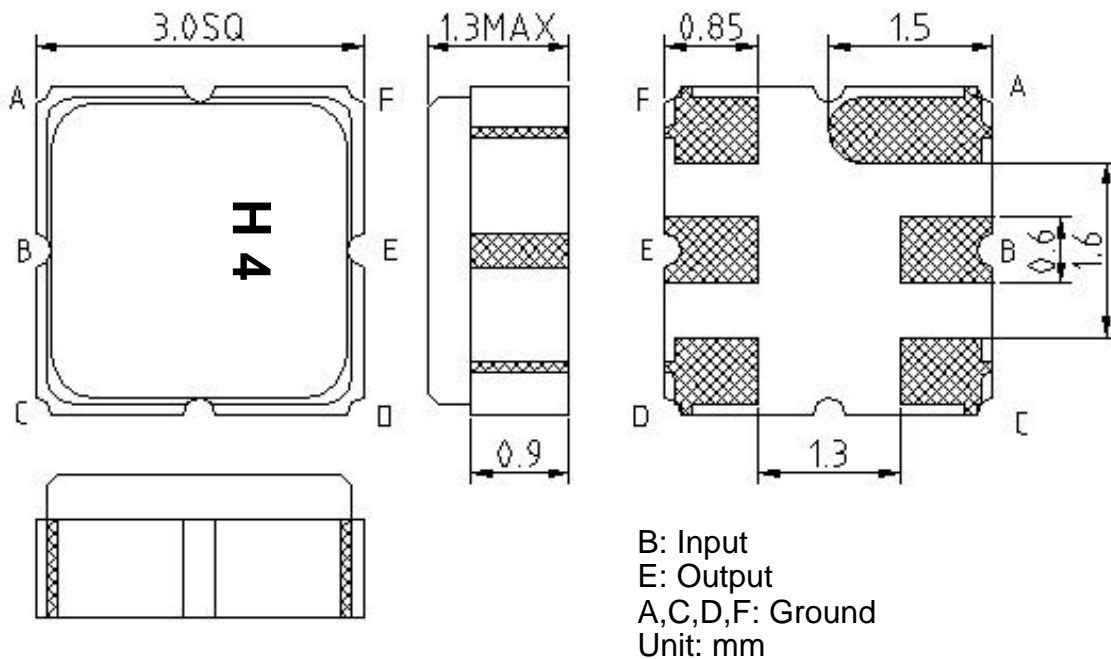
Part No: **MA08712**

REV. NO.: 1

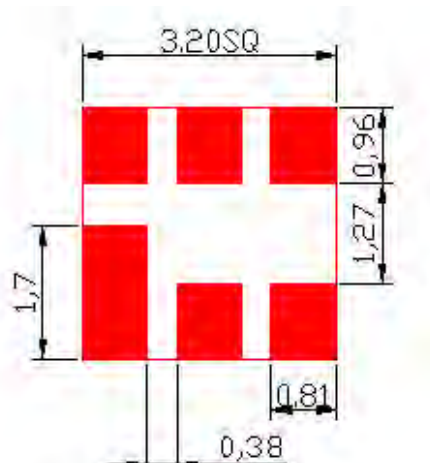
D. MEASUREMENT CIRCUIT:



E. OUTLINE DRAWING:



F. PCB FOOTPRINT:



SAW Filter 1013.0MHz

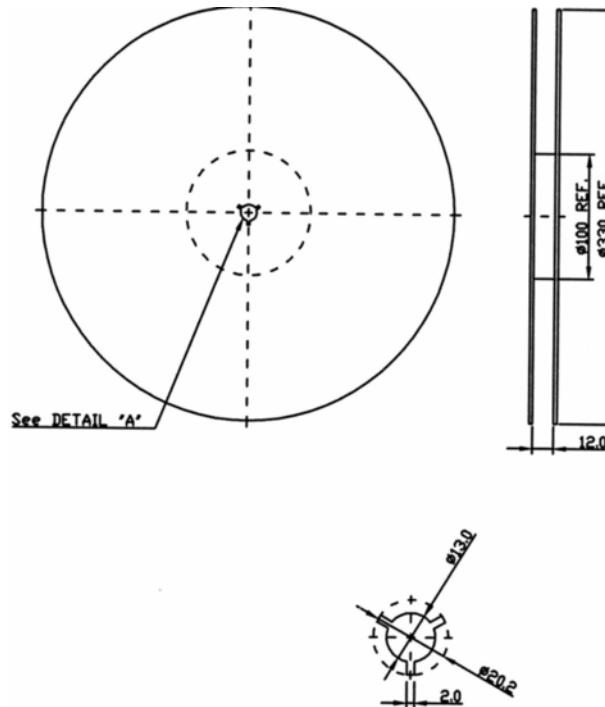
Model: TA0477A

Part No: MA08712

REV. NO.: 1

G. PACKING:

1. REEL DIMENSION



2. TAPE DIMENSION

