

SAW Filter 1300.0MHz

Model: TA0536A

Part No: MA08803

REV. NO.: 1

A. MAXIMUM RATING:

1. Input Power Level: 10 dBm
2. DC voltage: 3 V
3. Operating Temperature: -40°C to 85°C
4. Storage Temperature: -40°C to +85°C

B. CHARACTERISTICS:

Item	Unit	Min.	Typ.	Max.
Center Frequency	MHz	-	1300	-
Insertion Loss 1296 ~ 1304 MHz	dB	-	2.4	4.5
Ripple 1296 ~ 1304 MHz	dB	-	0.2	1.6
Attenuation(Reference level from IL _{min})				
5 ~ 1105 MHz	MHz dB	40	52	-
1105 ~ 1235 MHz	MHz dB	33	47	-
1365 ~ 1495 MHz	MHz dB	22	42	-
1495 ~ 2000 MHz	MHz dB	30	49	-
2000 ~ 2500 MHz	MHz dB	24	47	-
Source Impedance	O	-	50	-
Load Impedance	O	-	50	-

Note1. No matching network required for operation at 50O.

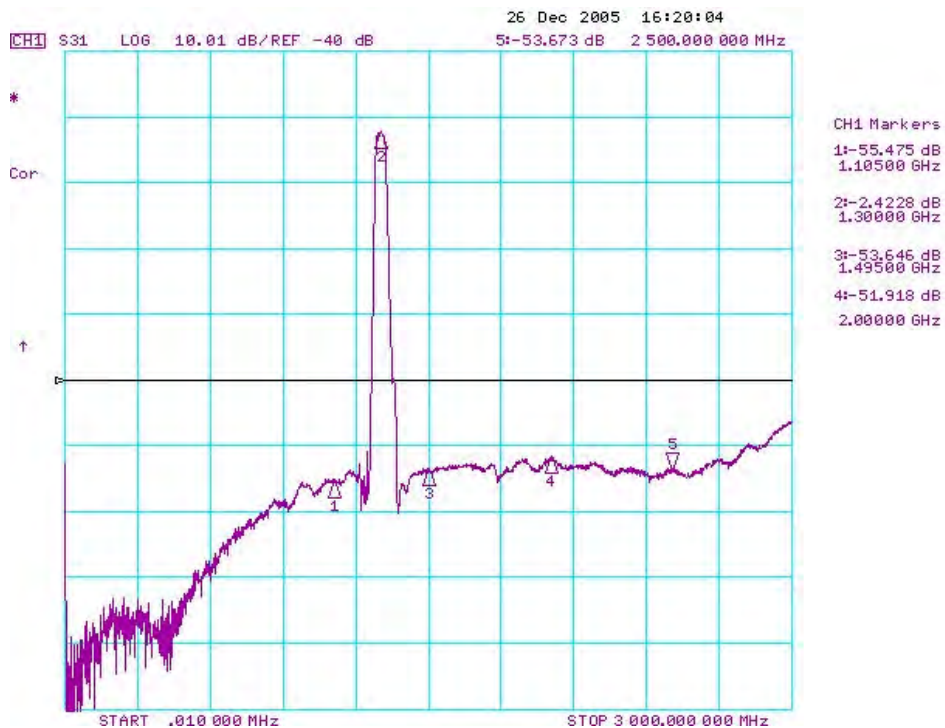
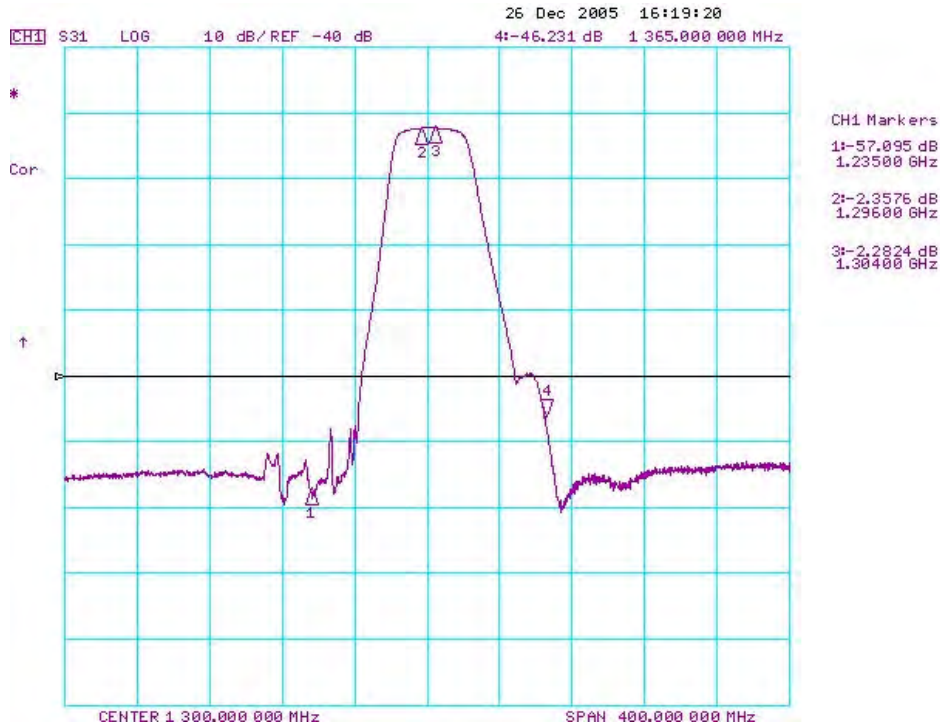
SAW Filter 1300.0MHz

Model: TA0536A

Part No: MA08803

REV. NO.: 1

C. TRANSFER FUNCTION:



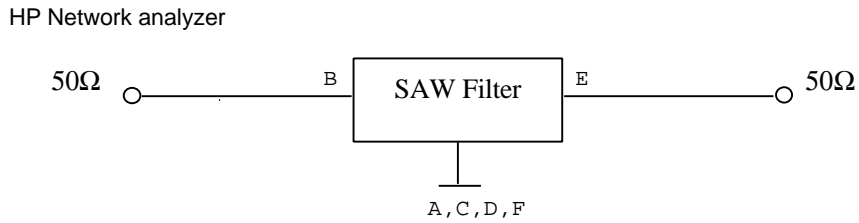
SAW Filter 1300.0MHz

Model: TA0536A

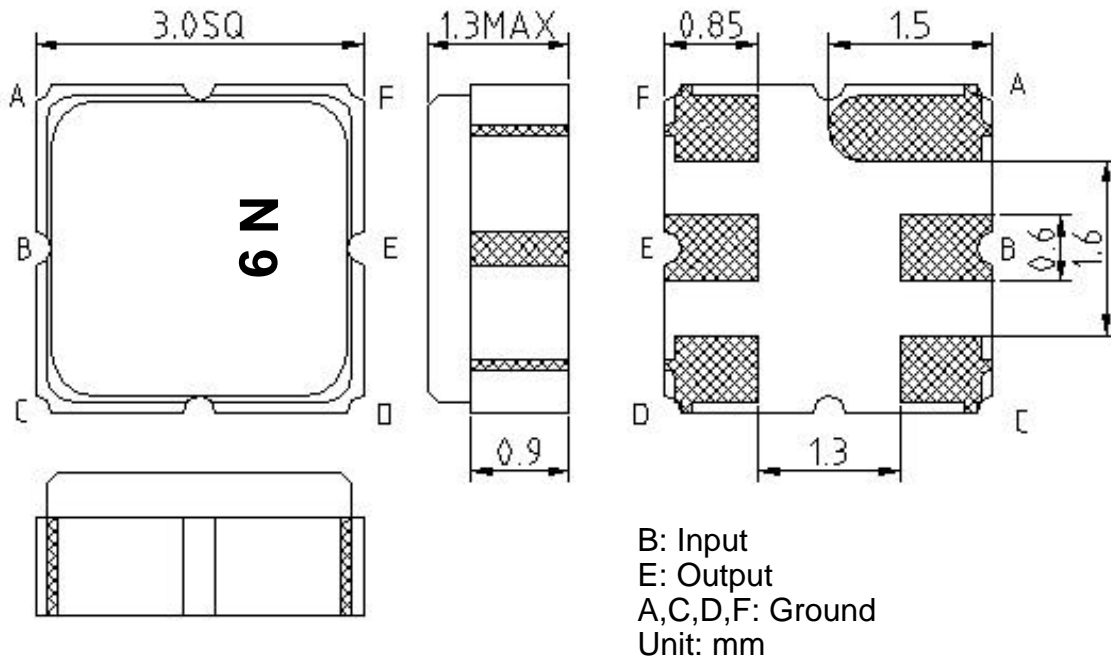
Part No: **MA08803**

REV. NO.: 1

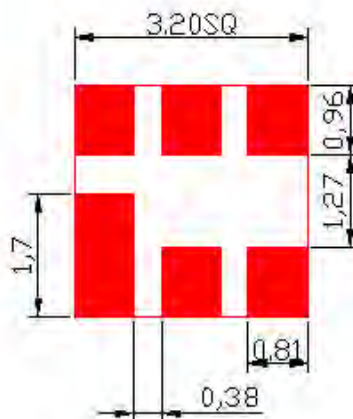
D. MEASUREMENT CIRCUIT:



E. OUTLINE DRAWING:



F. PCB FOOTPRINT:



SAW Filter 1300.0MHz

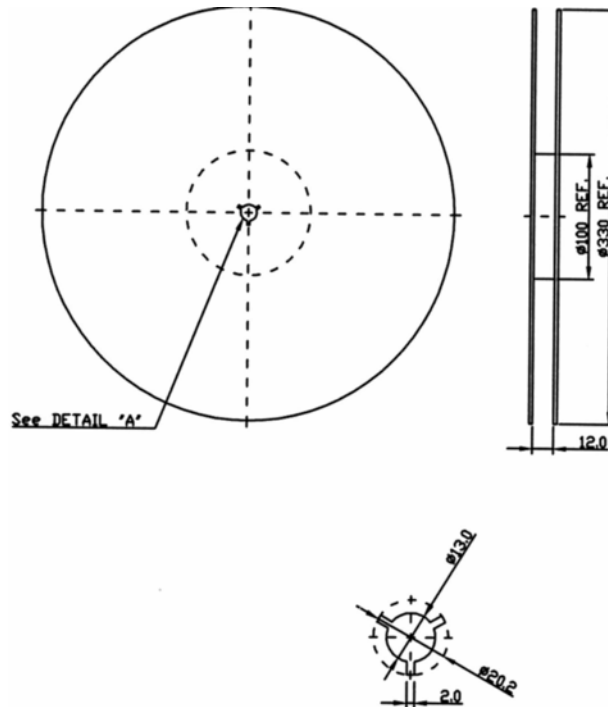
Model: TA0536A

Part No: MA08803

REV. NO.: 1

G. PACKING:

1. REEL DIMENSION



2. TAPE DIMENSION

