

SAW Filter 112.320MHz

Model: TB112EE

Part No: MA08832

REV NO.: 3

A. MAXIMUM RATING:

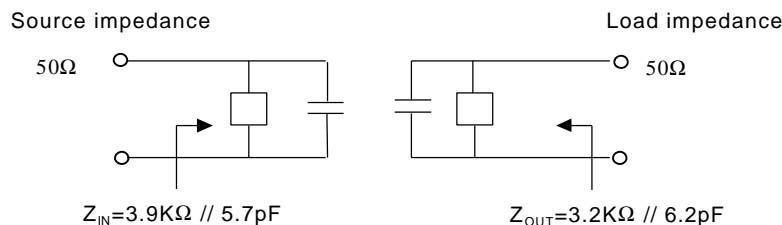
1. Input Power Level: 0 dBm
2. DC Voltage Vdc: 10V
3. Operating Temperature: -10°C to 65°C
4. Storage Temperature: -40°C to 85°C

B. ELECTRICAL CHARACTERISTICS:

Item	Unit.	Min.	Type.	Max.	Note
Center frequency, F_c	MHz	-	112.32	-	1
Insertion Loss, IL	dB	-		12.5	
Passband width, BW3	MHz	1.1		-	1
Group delay ripple in $F_c \pm 0.55\text{MHz}$, GDT	nS	-		200	
Attenuation:(Reference level from Min IL)					
$F_c - 5.184$ to -3.456MHz	dB	40		-	1
$F_c - 3.456$ to -1.728MHz	dB	34		-	1
$F_c - 1.728$ to -1.44MHz	dB	18		-	1
$F_c + 1.44$ to $+1.728\text{MHz}$	dB	18		-	1
$F_c + 1.728$ to $+3.456\text{MHz}$	dB	34		-	1
$F_c + 3.456$ to $+5.184\text{MHz}$	dB	40		-	1
Impedance at F_c Input $Z_{IN} = R_{IN} // C_{OUT}$		3.9KΩ // 5.7 PF			2
Output $Z_{OUT} = R_{OUT} // C_{OUT}$		3.2K Ω // 6.2 PF			2

Note1. The standard definitions is in JIS C 6703

Note2.



SAW Filter 112.320MHz

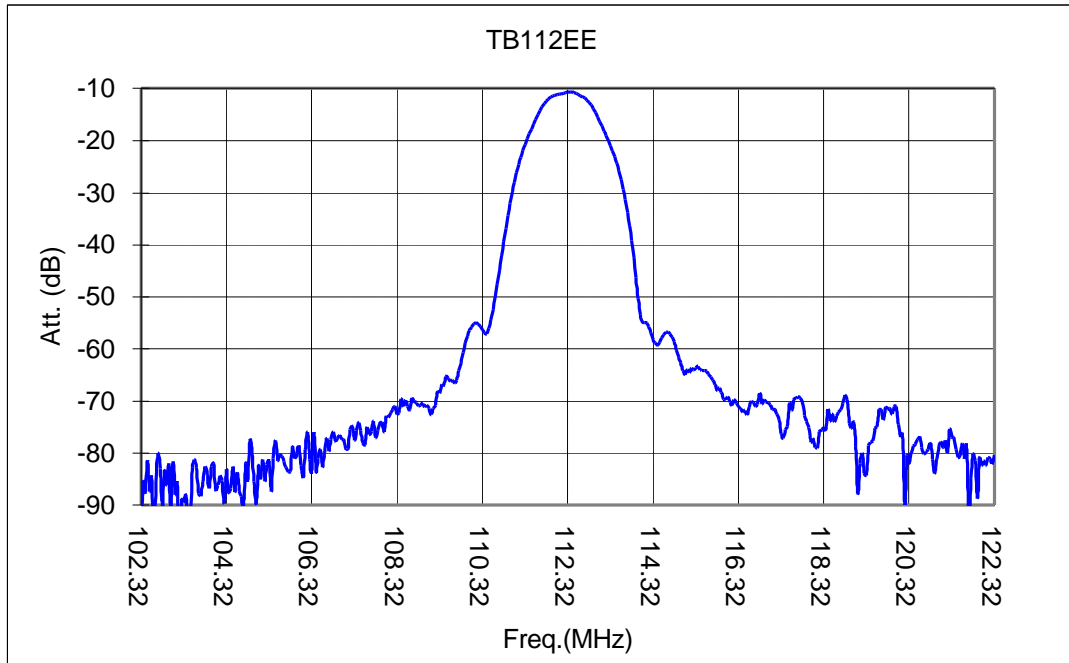
Model: TB112EE

Part No: MA08832

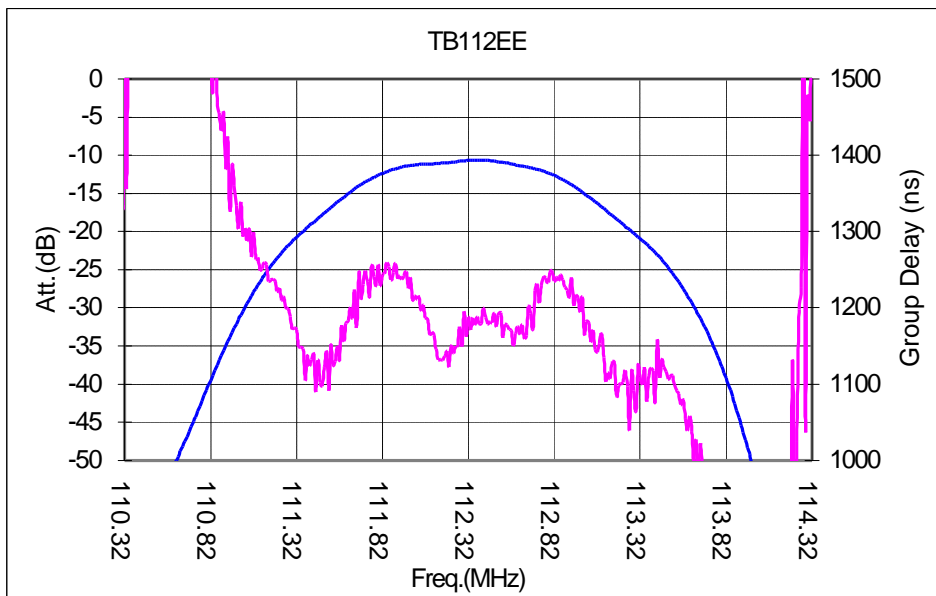
REV NO.: 3

C. FREQUENCY CHARACTERISTICS:

(1) Frequency Response:



(2) Amplitude ripple & Group Delay:



SAW Filter 112.320MHz

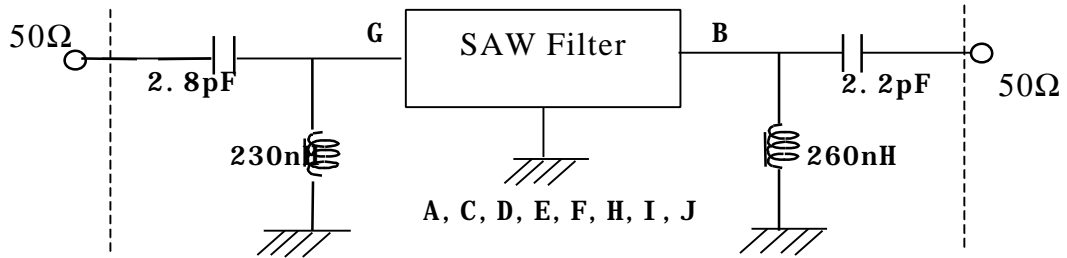
Model: TB112EE

Part No: MA08832

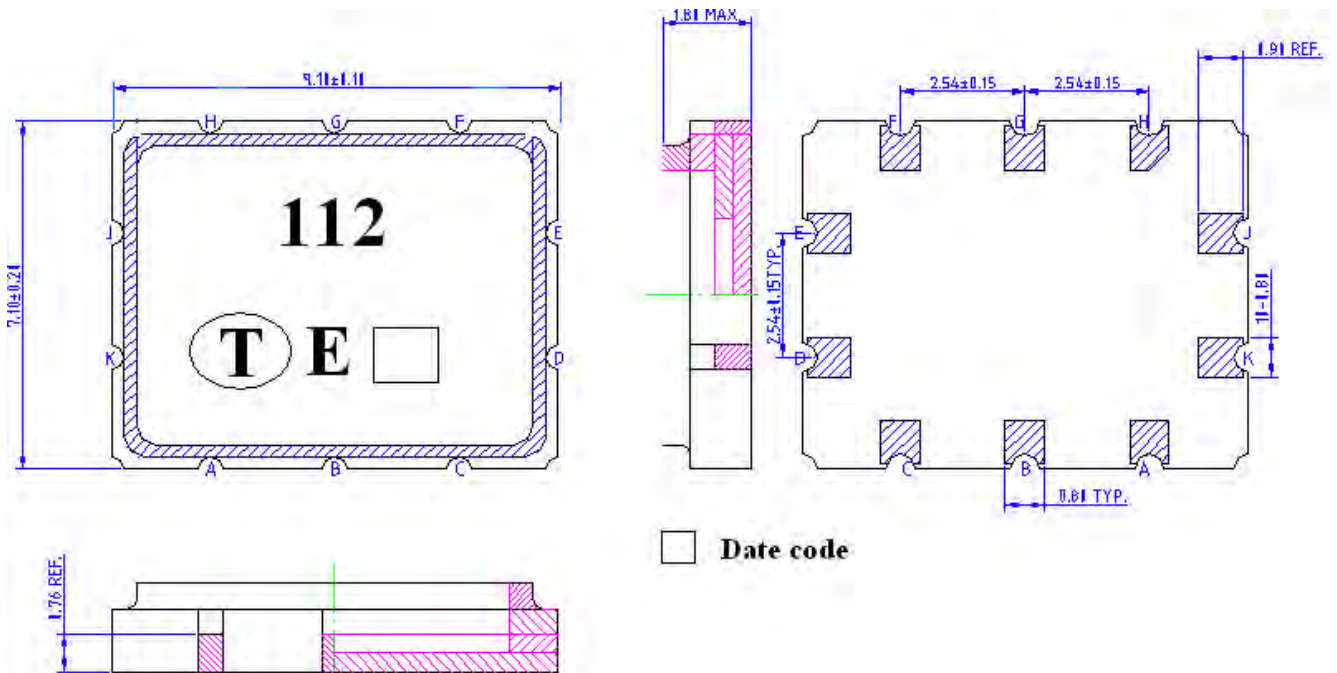
REV NO.: 3

D. MEASUREMENT CIRCUIT:

Network analyzer



E. OUTLINE DRAWING:



SAW Filter 112.320MHz

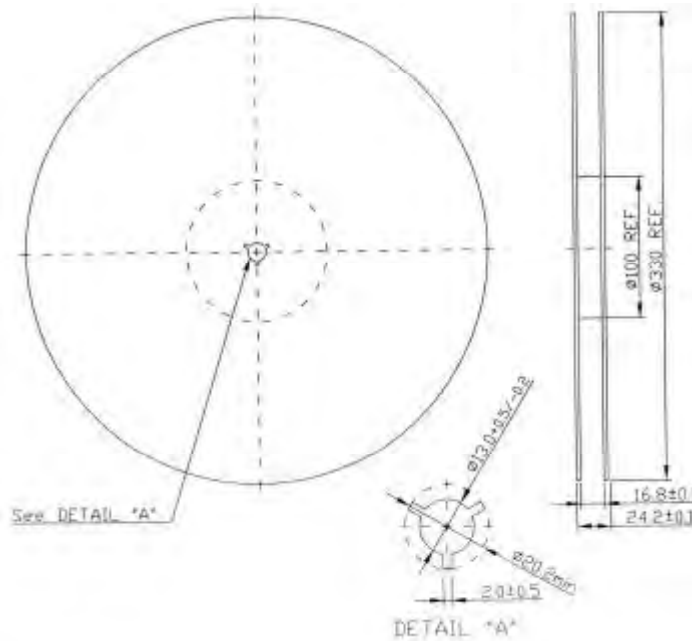
Model: TB112EE

Part No: MA08832

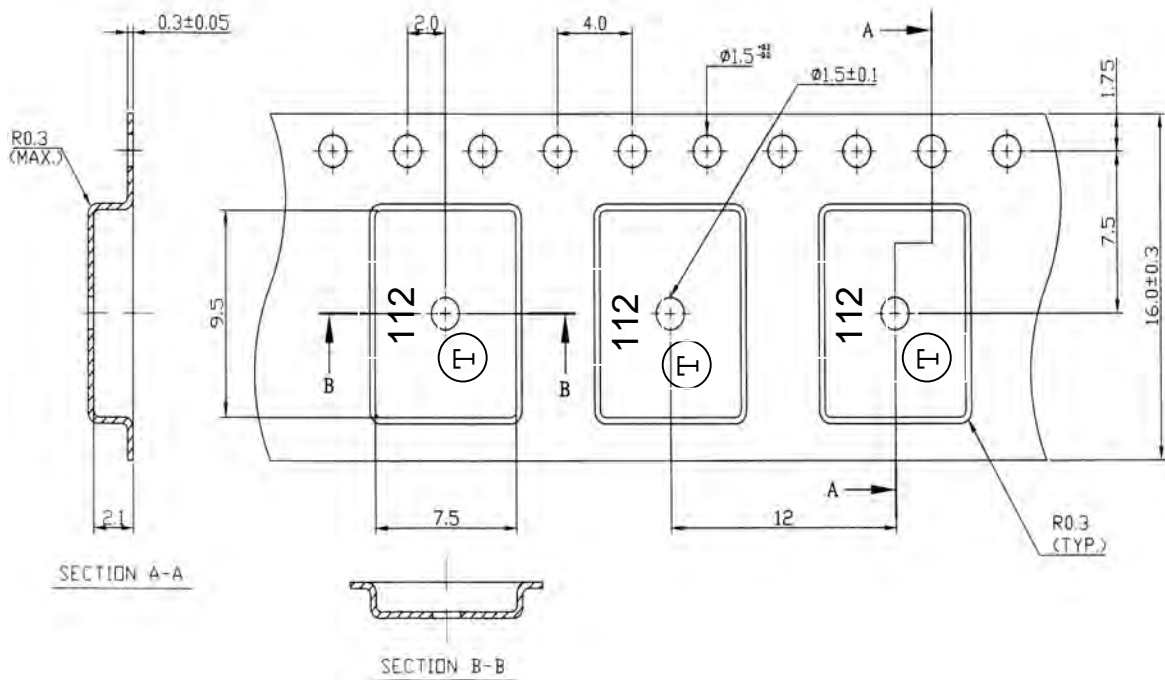
REV NO.: 3

F. PACKING:

1. REEL DIMENSION



2. TAPE DIMENSION



→
 Direction of feed