

310MHz SAW Filter

Model: TB0468A

Part No: MA09055

REV NO.: 1

A. MAXIMUM RATING:

1. Operating Temperature: -10 °C ~ 60 °C
2. Storage Temperature: -40 °C ~ +85 °C
3. Input Power Level: 10dBm

B. CHARACTERISTICS:

1. Ambient Temperature: 23 °C

Characteristics	Value			Note
	Min.	Typ.	Max.	
Center frequency F_c MHz	-	310	-	-
Insertion loss I.L. dB	-	10.5	14	-
1 dB Bandwidth MHz	10	11.5	-	-
3 dB Bandwidth MHz	-	14.3	-	-
Amplitude Ripple (305~315MHz) dB	-	0.6	1	-
Phase linearity (305~315MHz) (p-p) deg	-	3	-	-
Group Delay Ripple ($F_c \pm 5$ MHz) nsec	-	20	100	-
Attenuation:(Reference level from minimum insertion loss)				dB
1) 10-205 MHz dB	45	48	-	-
2) 205-285 MHz dB	40	43	-	-
3) 335-340 MHz dB	38	42	-	-
4) 340-360 MHz dB	35	44	-	-
5) 360-365 MHz dB	40	44	-	-
6) 365-390 MHz dB	35	43	-	-
7) 390-485 MHz dB	39	43	-	-
Source Impedance Ohm	-	50	-	-
Load Impedance Ohm	-	50	-	-
Temperature Coefficient ppm/°C	-	-75	-	-
Substrate Material	-	128 LiNbO3	-	-

310MHz SAW Filter
Part No: MA09055

Model: TB0468A
REV NO.: 1

C. FREQUENCY CHARACTERISTICS:

1. S21 Response

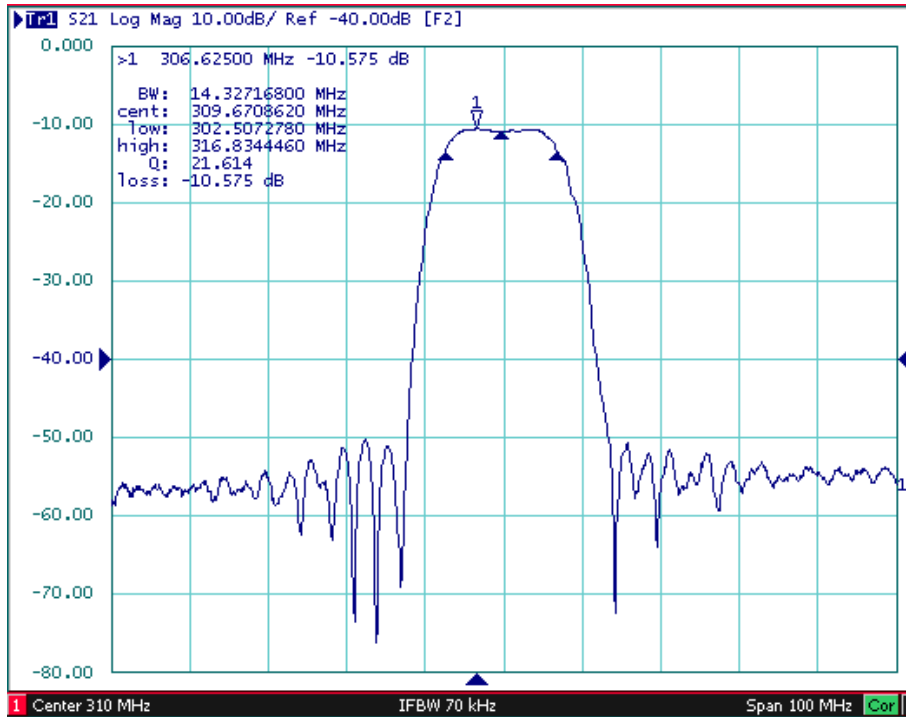


Fig.1 Horizontal : 10MHz/Div Vertical: 10dB/Div

2. Passband Ripple

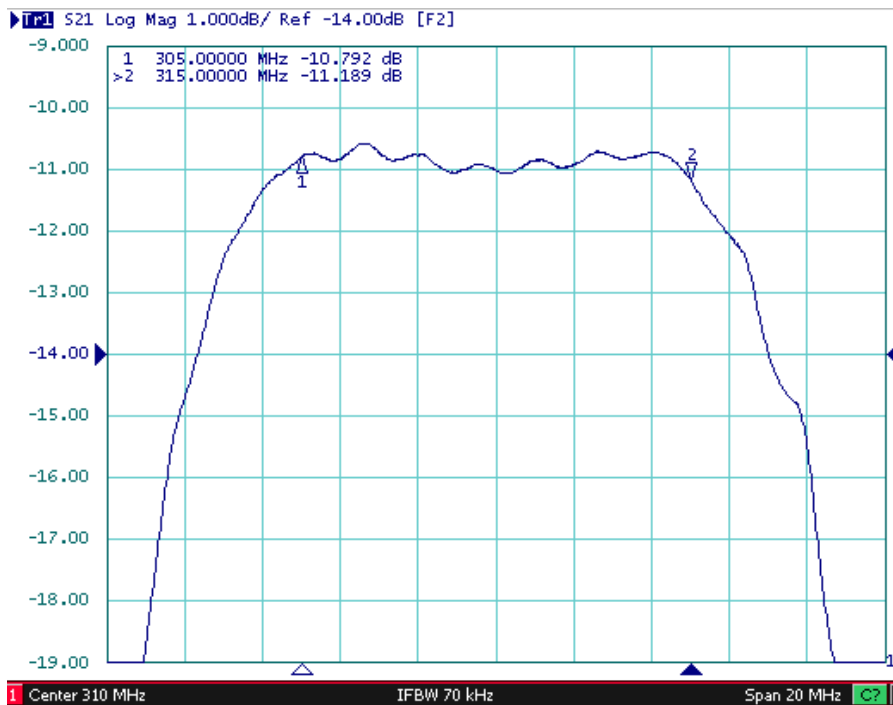


Fig.2 Horizontal : 2MHz/Div Vertical: 1dB/Div

310MHz SAW Filter
Part No: MA09055

Model: TB0468A
REV NO.: 1

3. Group Delay Ripple

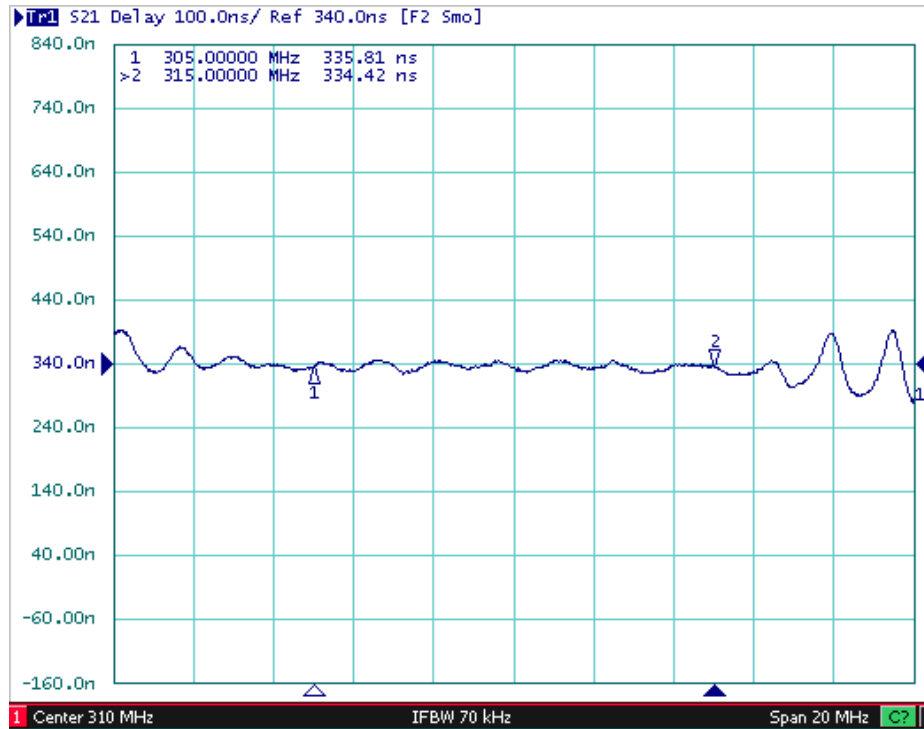


Fig.3 Horizontal : 2MHz/Div Vertical: 100nS/Div

4. Phase linearity

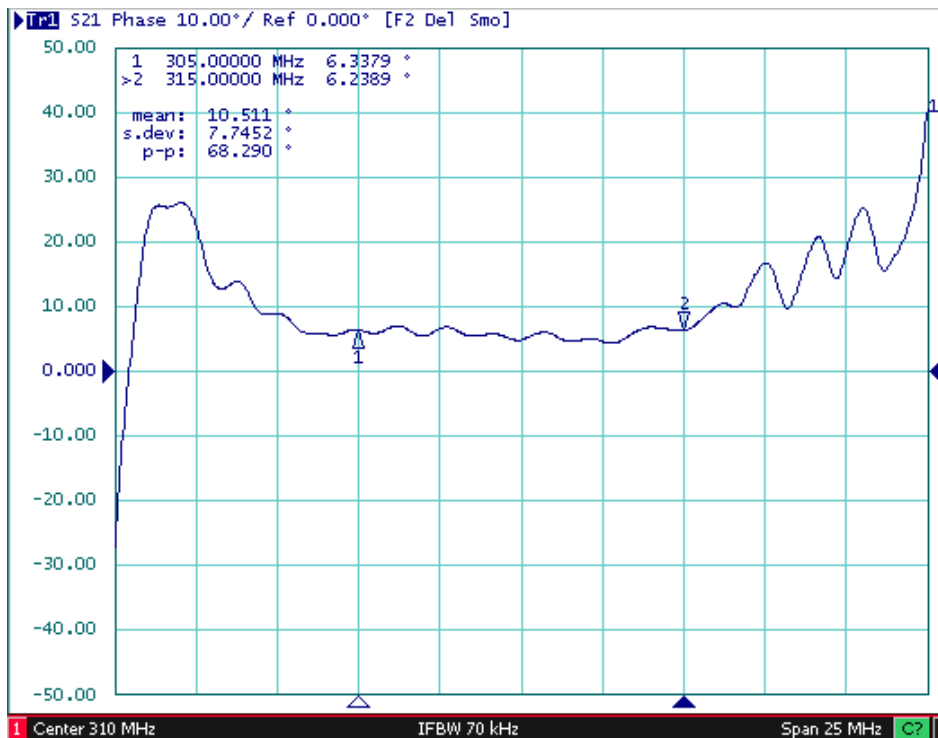
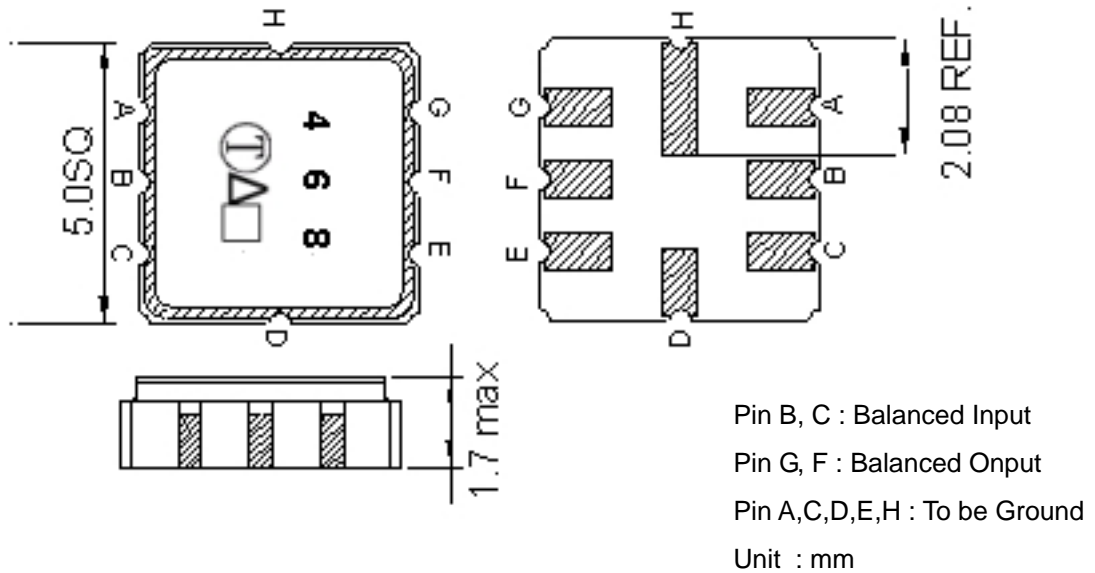


Fig.4 Horizontal : 2.5MHz/Div Vertical: 10 deg/Div

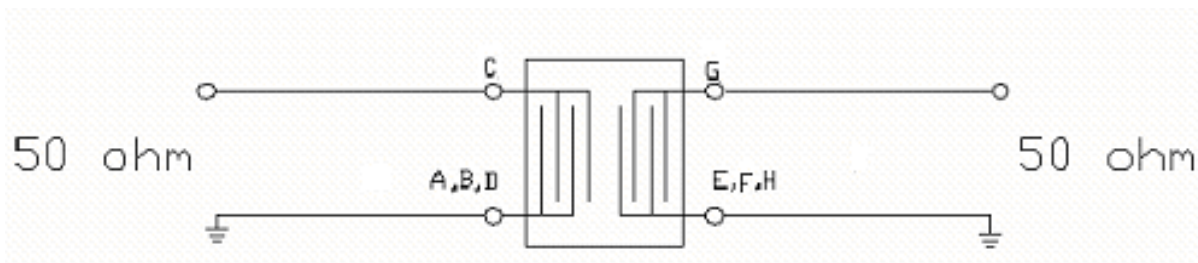
310MHz SAW Filter
Part No: MA09055

Model: TB0468A
REV NO.: 1

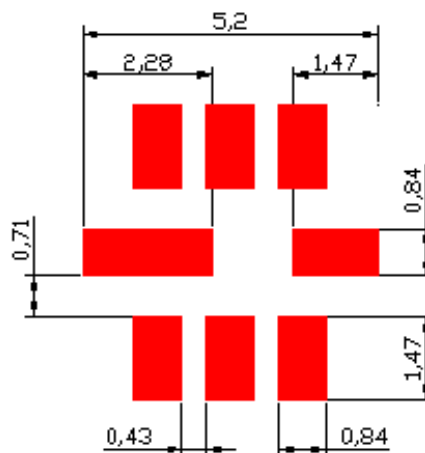
D. OUTLINE DRAWING:



E. TEST FIXTURE:



F. PCB FOOTPRINT:

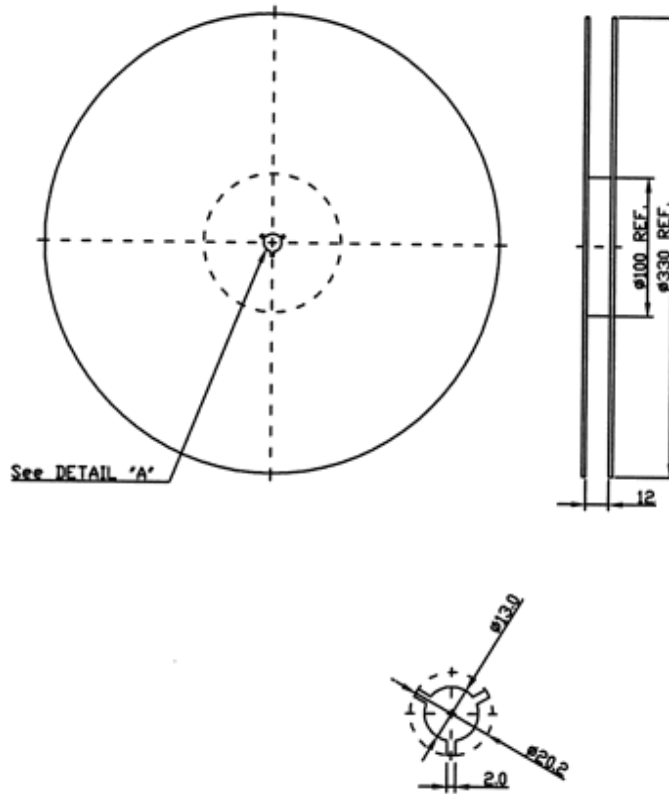


310MHz SAW Filter
Part No: MA09055

Model: TB0468A
REV NO.: 1

G. PACKING:

1. REEL DIMENSION



2. TAPE DIMENSION

