

SAW Filter: 315.0MHz
Part No: MA09065

Model: TA0672A
Rev No: 1

A. MAXIMUM RATING:

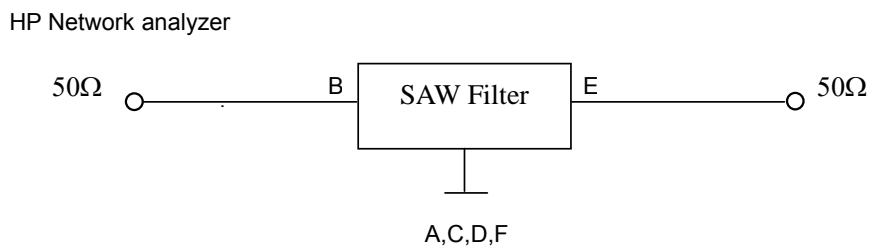
1. Input Power Level: 10dBm
2. DC voltage: 5V
3. Operating Temperature: -30°C to 85°C
4. Storage Temperature: -30°C to +85°C

B. CHARACTERISTICS:

Item	Unit	Min.	Typ.	Max.
Center Frequency Fc	MHz	-	315	-
Insertion Loss Fc ± 5MHz	dB	-	2.5	4.0
Bandwidth BW	MHz	10	15	-
Ripple Fc ± 5MHz		-	1	2.0
Absolute Attenuation(reference to 0dB)				
10 ~ 295MHz	dB	36	50	-
345 ~ 680 MHz	dB	36	47	-
Source impedance Z _S	Ω	-	50	-
Load impedance Z _L	Ω	-	50	-
Temperature coefficient	ppm/k		-37	

Note: No matching network required for operation at 50Ω

C. MEASUREMENT CIRCUIT:

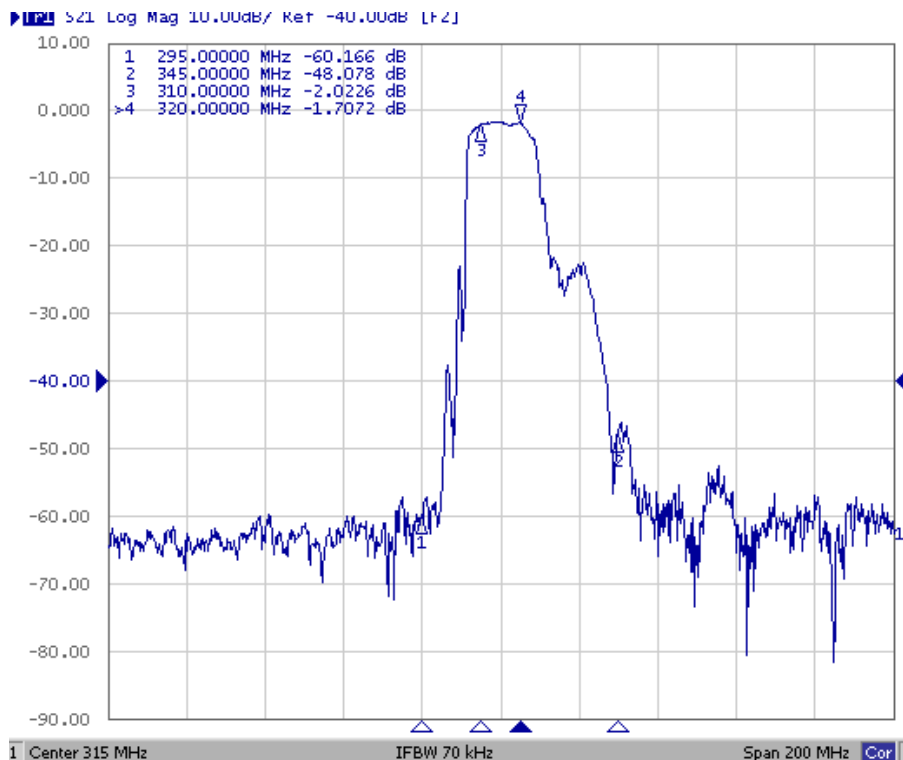
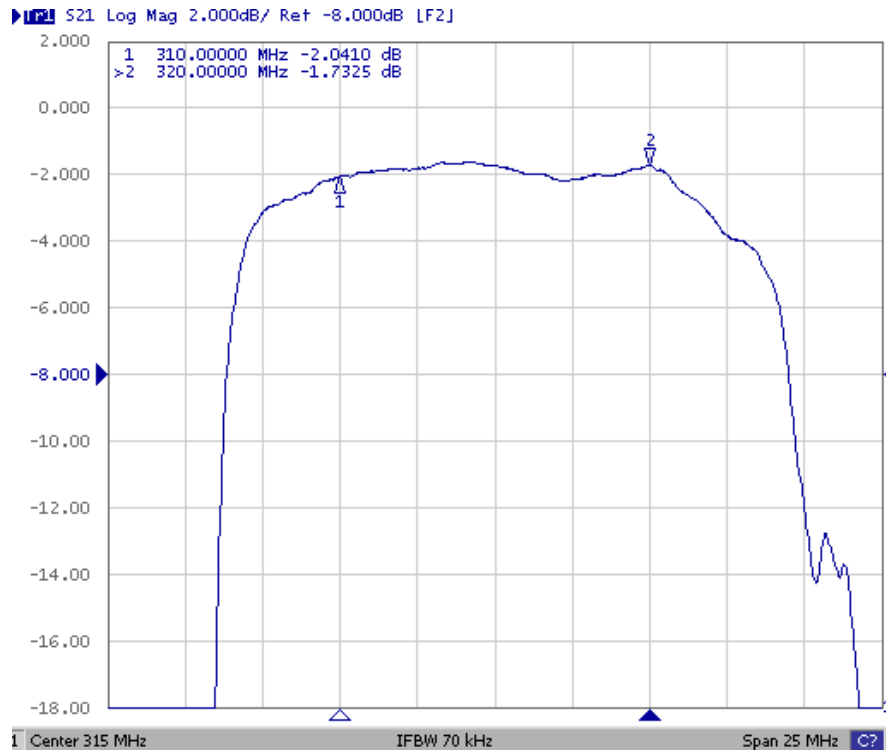


SAW Filter: 315.0MHz
Part No: MA09065

Model: TA0672A
Rev No: 1

D. FREQUENCY CHARACTERISTICS:

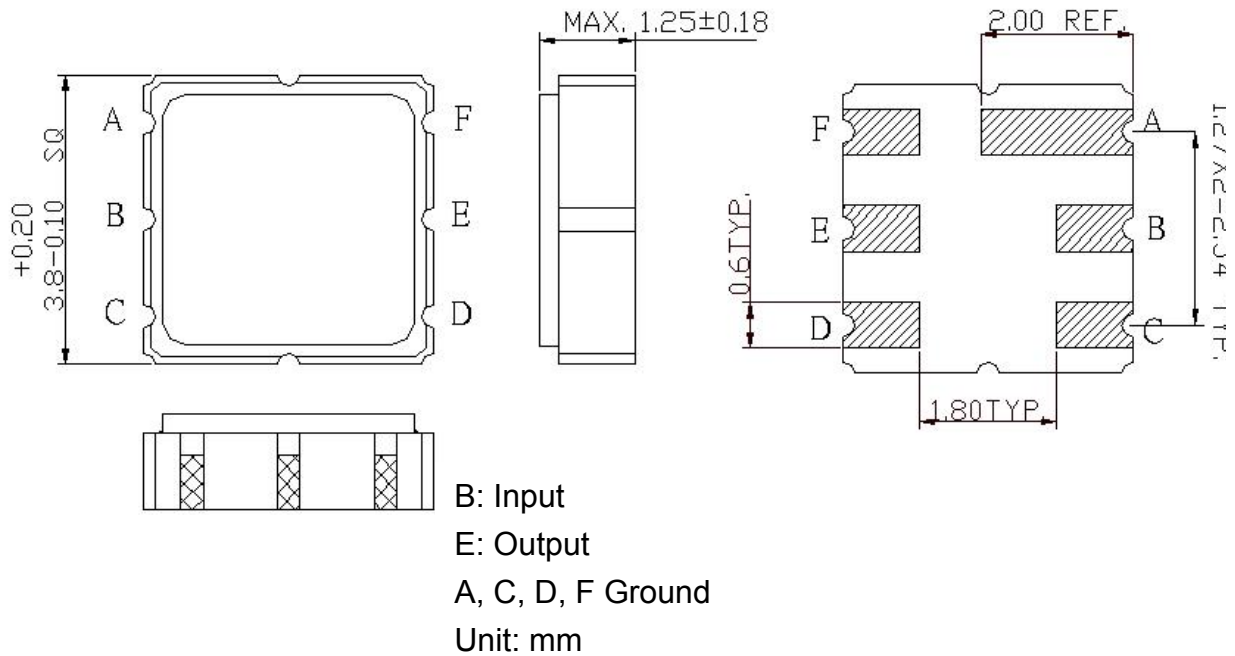
Transfer Function



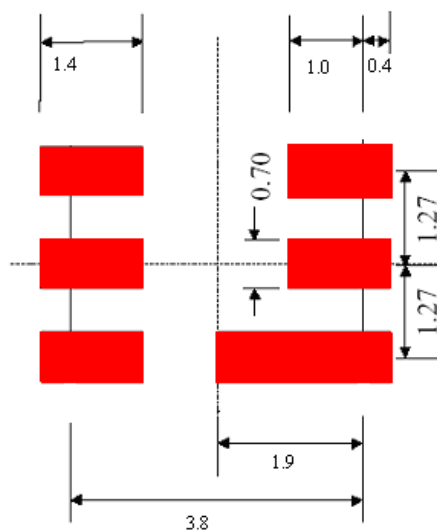
SAW Filter: 315.0MHz
Part No: MA09065

Model: TA0672A
Rev No: 1

E. OUTLINE DRAWING:



F. PCB FOOTPRINT:

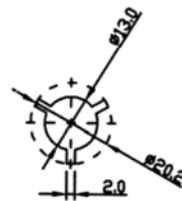
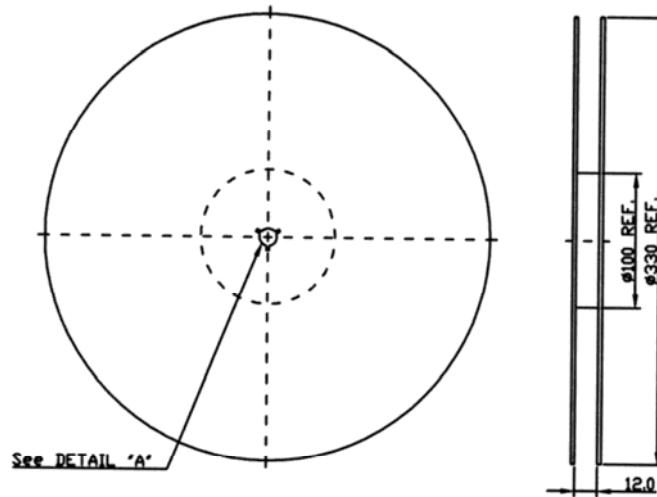


SAW Filter: 315.0MHz
Part No: MA09065

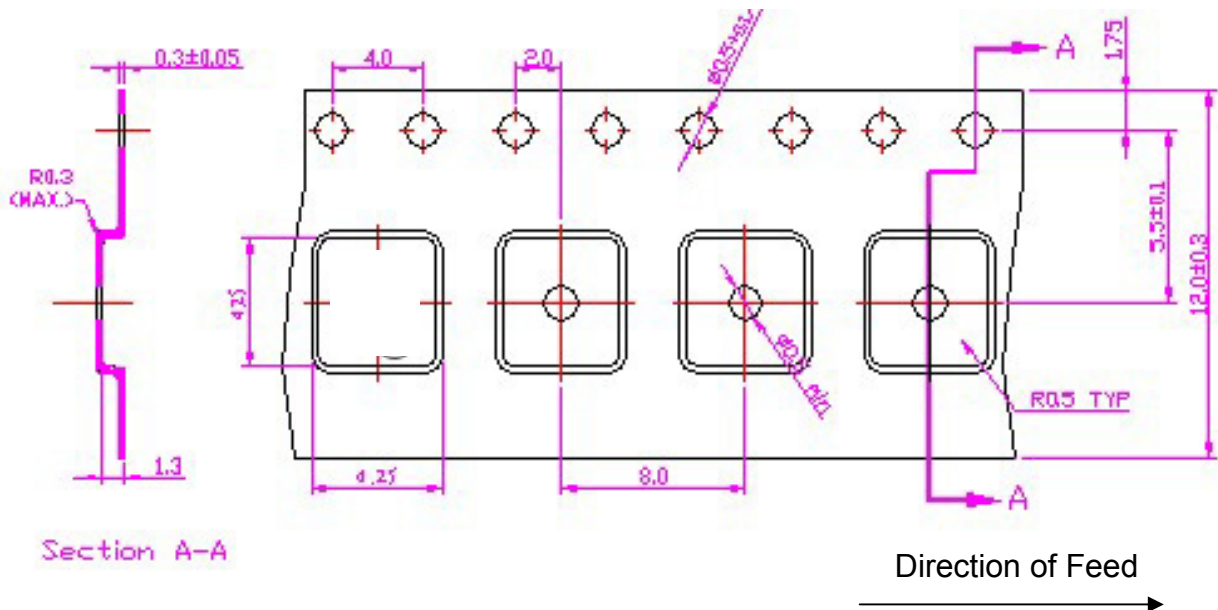
Model: TA0672A
Rev No: 1

G. PACKING:

1. Reel Dimension



2. Tape Dimension



SAW Filter: 315.0MHz
Part No: MA09065

Model: TA0672A
Rev No: 1

H. RECOMMENDED REFLOW PROFILE:

