

915.0MHz SAW Filter

Model: TA0495A

Part No: MA09103

REV NO.: 1

A. MAXIMUM RATING:

1. Input Power Level: 15 dB_m
2. DC voltage: 3 V
3. Operating Temperature: -30°C ~ +85°C
4. Storage Temperature: -40°C ~ +85°C

B. ELECTRICAL CHARACTERISTICS:

Singled to Balanced operation

Terminating source impedance : $Z_s = 800 \Omega$ add matching circuit

Terminating load impedance : $Z_L = 50 \Omega$

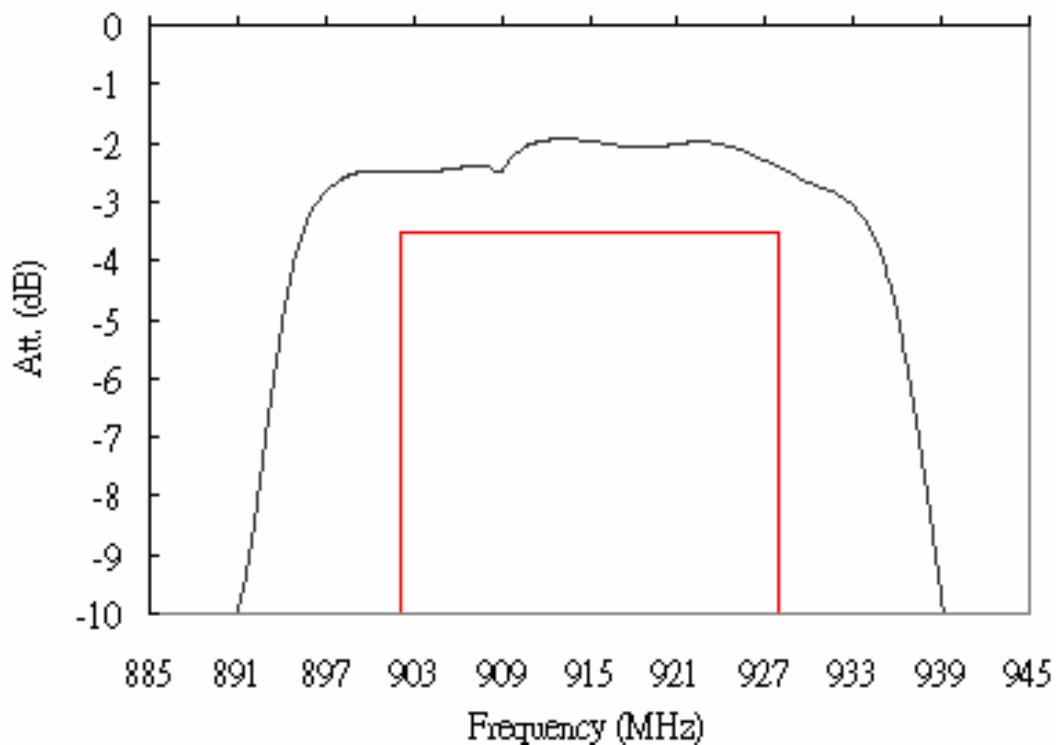
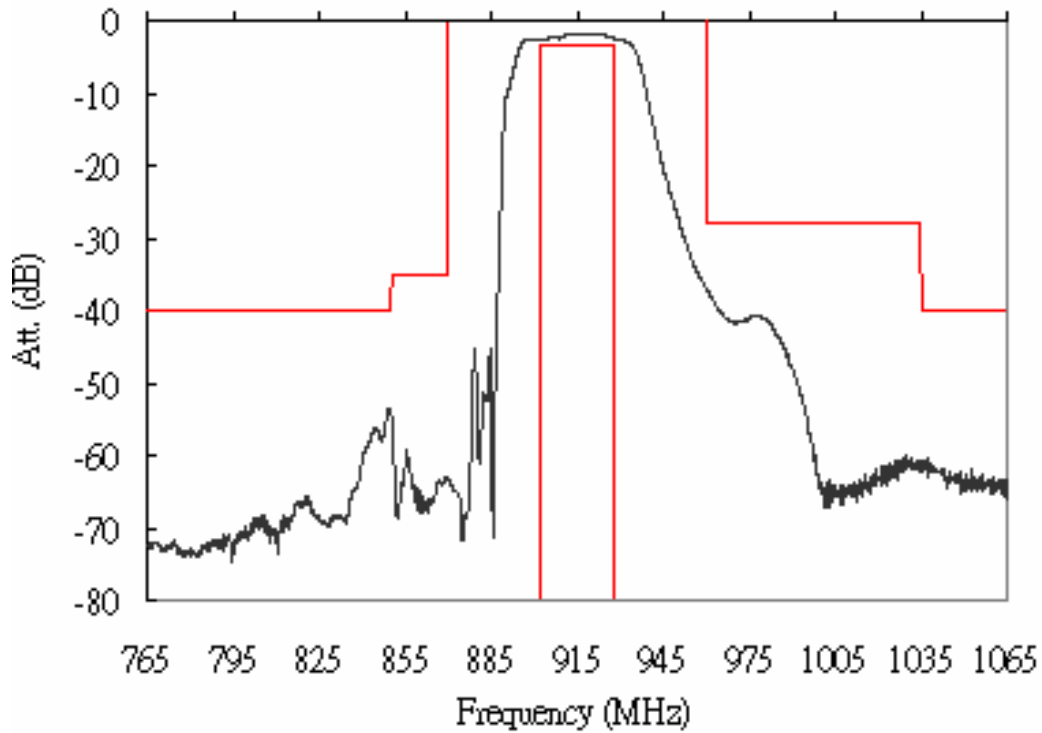
Item	Value			Unit
	Min.	Typ.	Max.	
Center frequency F_C	-	915	-	MHz
Insertion loss 902~928 MHz I.L.	-	2.5	3.5	dB
Ripple 902~928 MHz	-	0.5	2.0	dB
VSWR 902~928 MHz	-	1.75	2.4	
Attenuation:(Reference level from 0 dB)				
0 ~ 850 MHz	40	54	-	dB
850 ~ 870 MHz	35	54	-	dB
960 ~ 1035 MHz	28	36	-	dB
1035 ~ 1500 MHz	40	57	-	dB
1500 ~ 3000 MHz	30	56	-	dB

915.0MHz SAW Filter
Part No: **MA09103**

Model: **TA0495A**
REV NO.: 1

C. FREQUENCY CHARACTERISTICS:

Transfer Function



915.0MHz SAW Filter

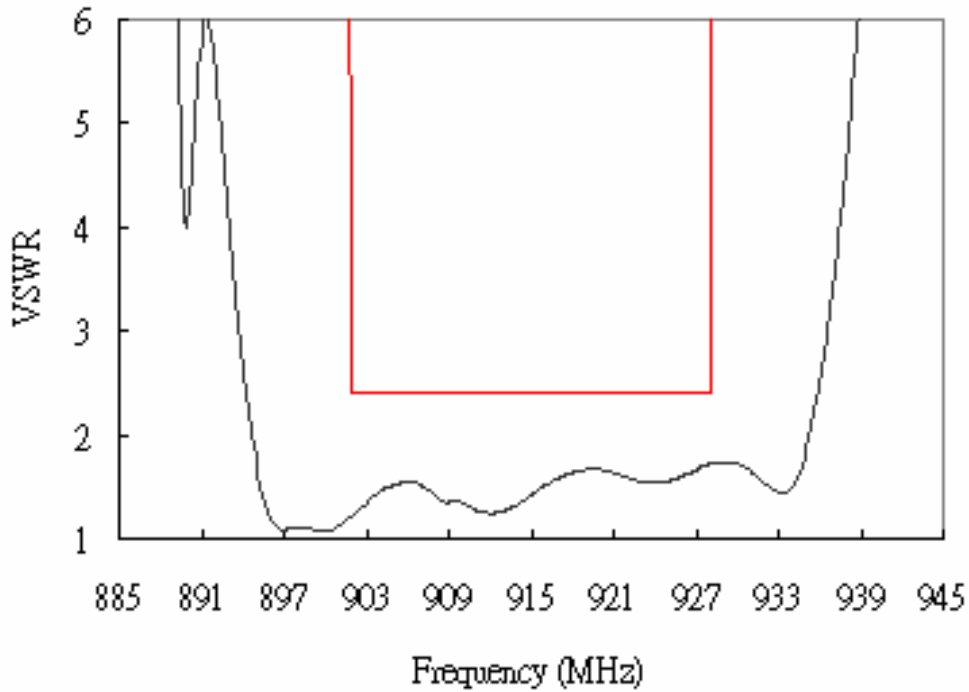
Model: TA0495A

Part No: MA09103

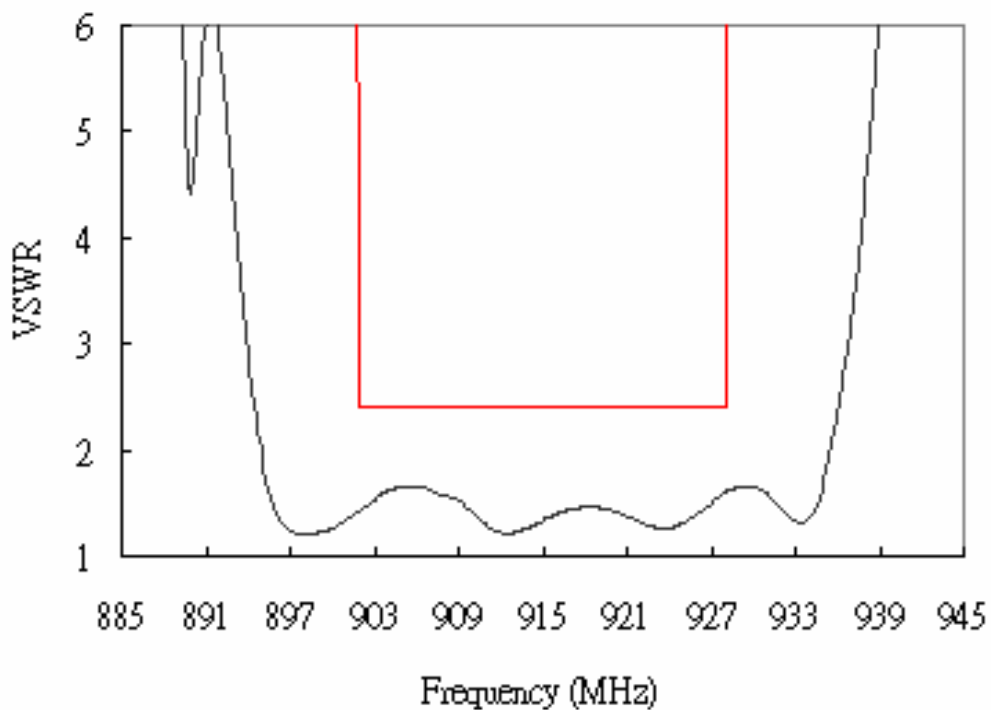
REV NO.: 1

Reflection Function

Sdd11



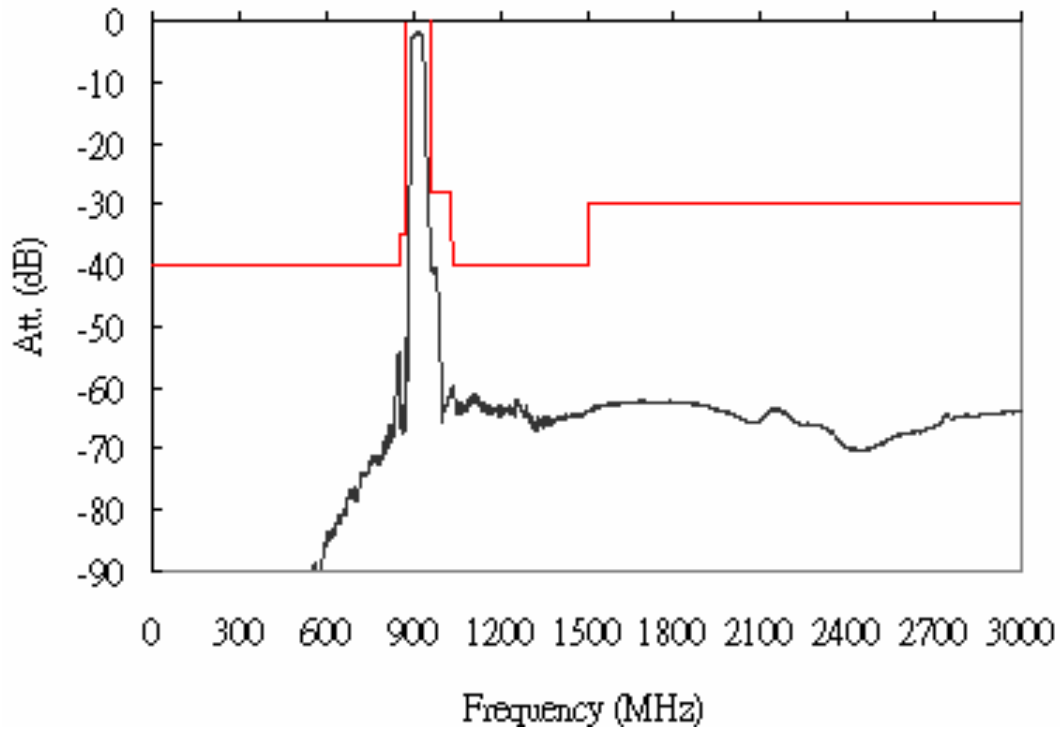
Sss22



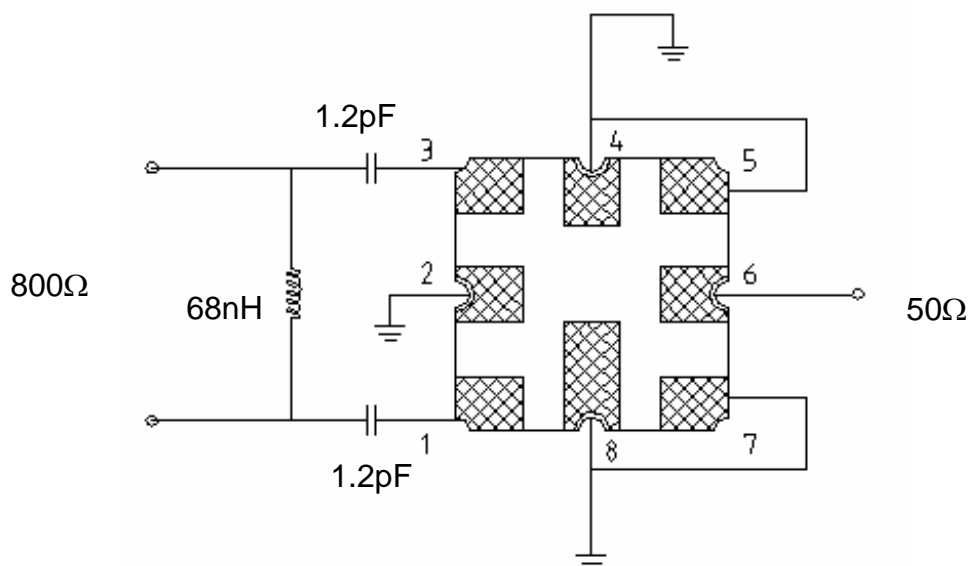
915.0MHz SAW Filter
Part No: **MA09103**

Model: **TA0495A**
REV NO.: 1

Wideband



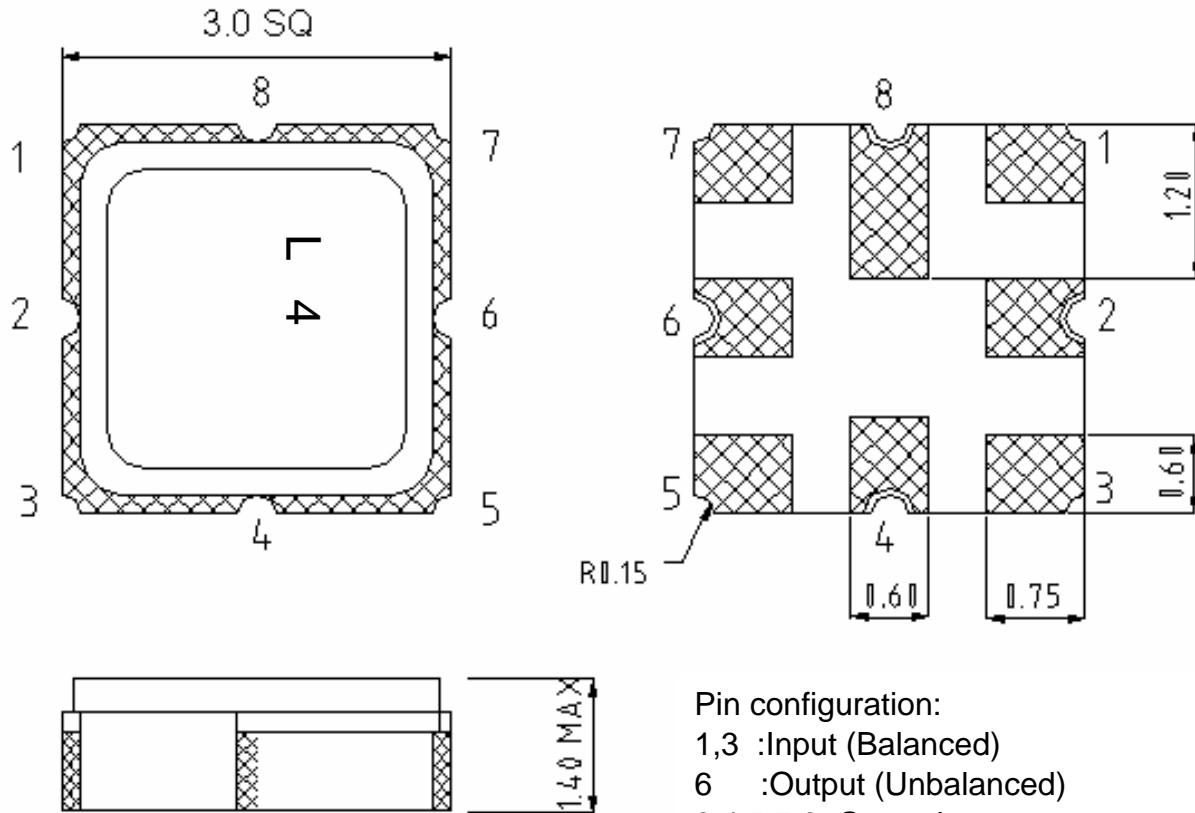
D. MEASUREMENT CIRCUIT:



915.0MHz SAW Filter
Part No: MA09103

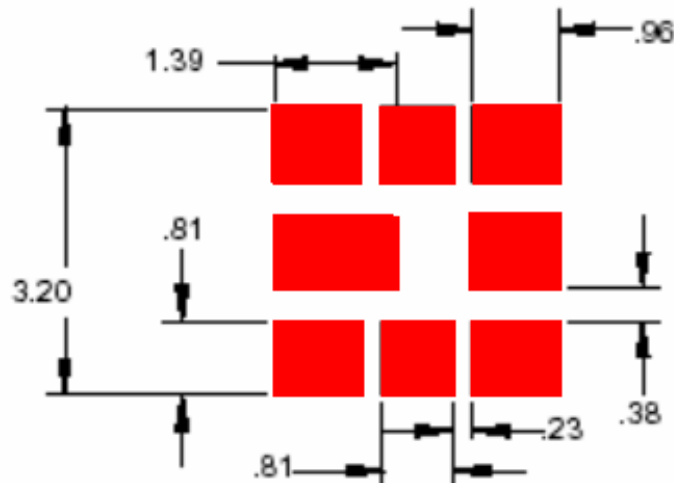
Model: TA0495A
REV NO.: 1

E. OUTLINE DRAWING:



Pin configuration:
 1,3 :Input (Balanced)
 6 :Output (Unbalanced)
 2,4,5,7,8: Ground
 Unit : mm

F. PCB FOOTPRINT:



915.0MHz SAW Filter

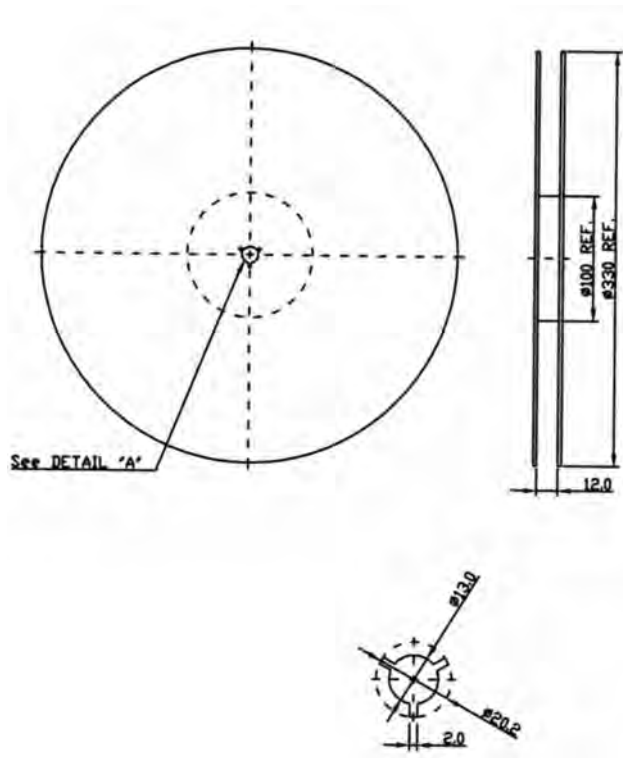
Model: TA0495A

Part No: MA09103

REV NO.: 1

G. PACKING:

1. REEL DIMENSION



2. TAPE DIMENSION

