

**SAW Filter 135.420MHz**  
**Part No: MA09620**

**Model: TB0571A**  
**Rev No: 1**

**A. MAXIMUM RATING:**

1. Operating Temperature: -10°C to +85°C
2. Storage Temperature: -40°C to +85°C
3. Maximum Input Power: 10dBm

**B. ELECTRICAL CHARACTERISTICS:**

Ambient Temperature: 25°C

Item	Unit	Min.	Typ.	Max.
Center frequency Fc	MHz	135.36	135.42	135.48
Insertion loss at Fc	dB	-	9.7	12.0
Bandwidth at -1.0dB	MHz	-	2.1	-
Bandwidth at -3.0dB	MHz	-	3.1	-
Bandwidth at -40.0dB	MHz	-	6.4	-
Group Delay Ripple Fc ± 1.0MHz	nS	-	82	120
Attenuation (Reference level from minimum Insertion loss)				
Fc ± 1.25MHz	dB	-	1.7	3.0
Fc ± 4MHz ~ Fc ± 15MHz	dB	38	42	-
Fc ± 15MHz ~ Fc ± 25MHz	dB	45	54	-
Temp Coefficient	ppm/°C <sup>2</sup>	-	-0.032	-

**SAW Filter 135.420MHz**  
**Part No: MA09620**

**Model: TB0571A**  
**Rev No: 1**

**C. FREQUENCY CHARACTERISTICS:**

1. S21 Response

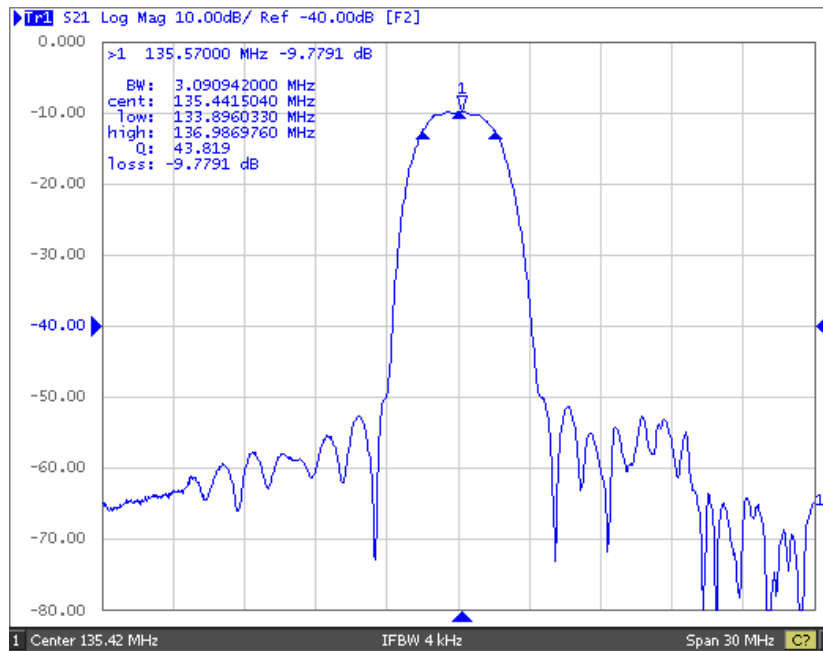


Fig. 1. Horizontal: 3MHz/Div, Vertical: 10dB/Div

2. Passband Ripple

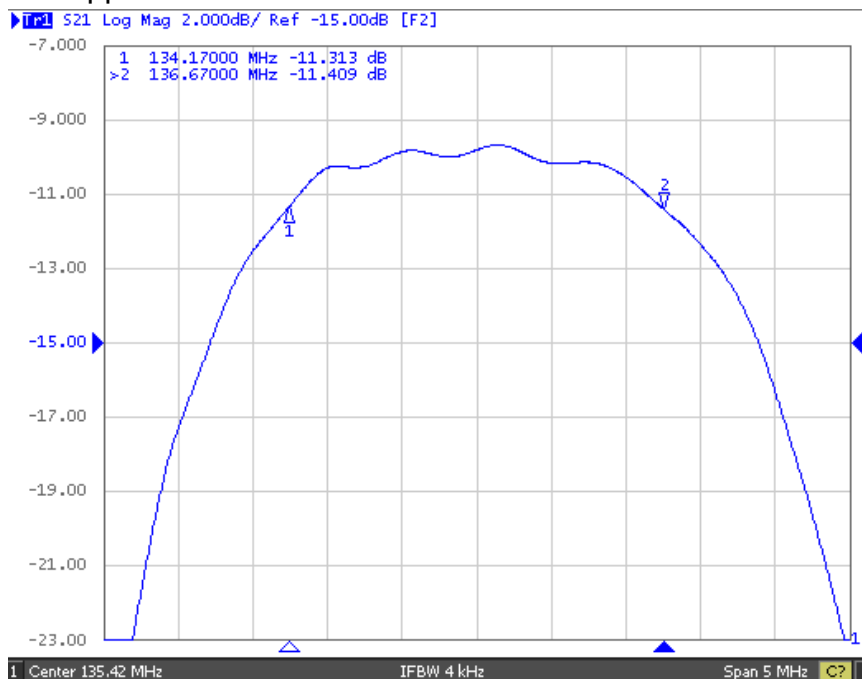


Fig. 2. Horizontal: 0.5MHz/Div, Vertical: 2dB/Div

**SAW Filter 135.420MHz**  
**Part No: MA09620**

**Model: TB0571A**  
**Rev No: 1**

### 3. Group Delay Ripple

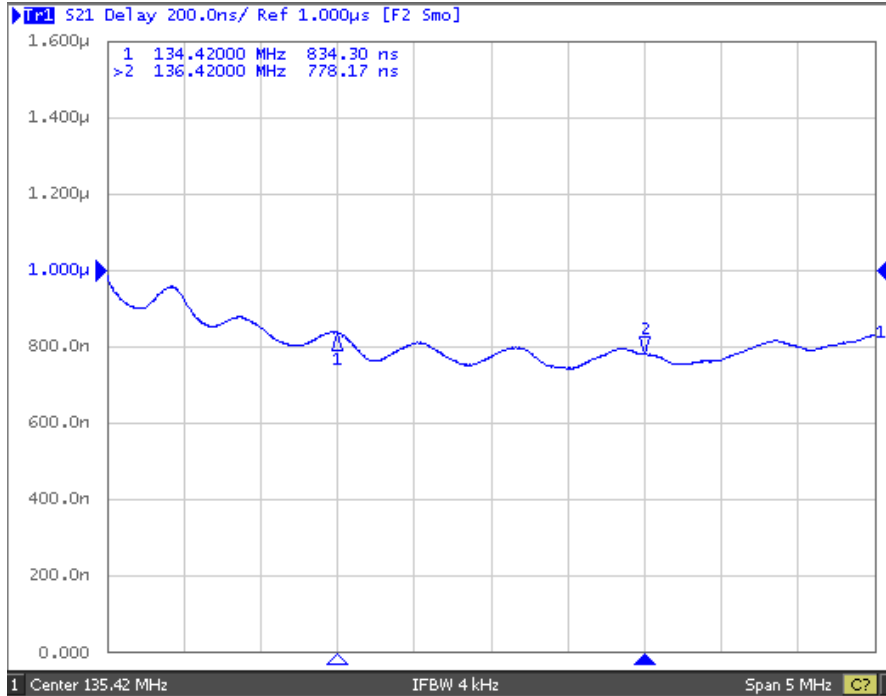


Fig. 3. Horizontal: 0.5MHz/Div, Vertical: 200nS/Div

### 4. Wide Band

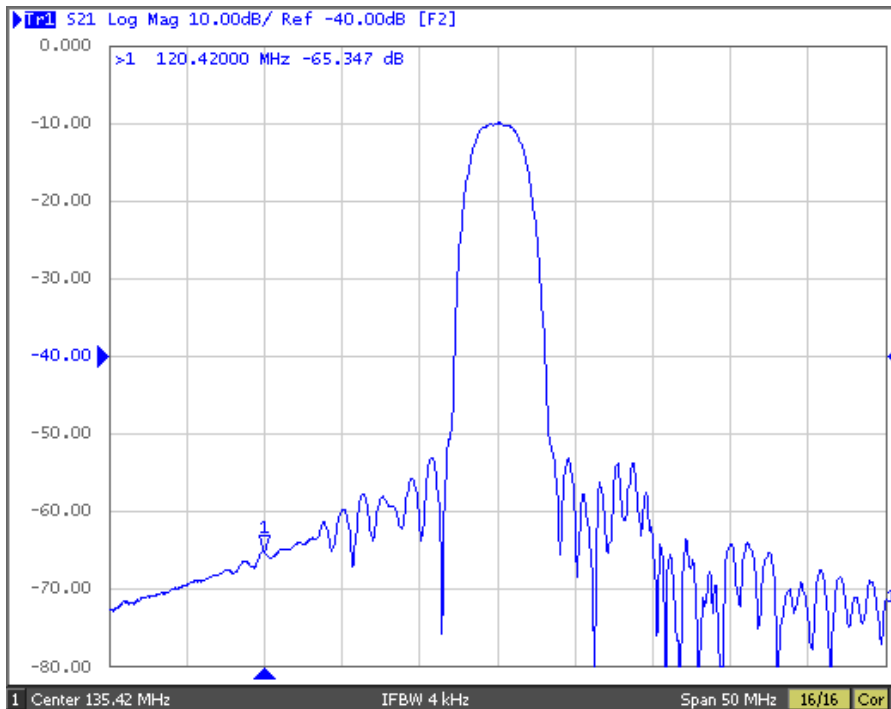


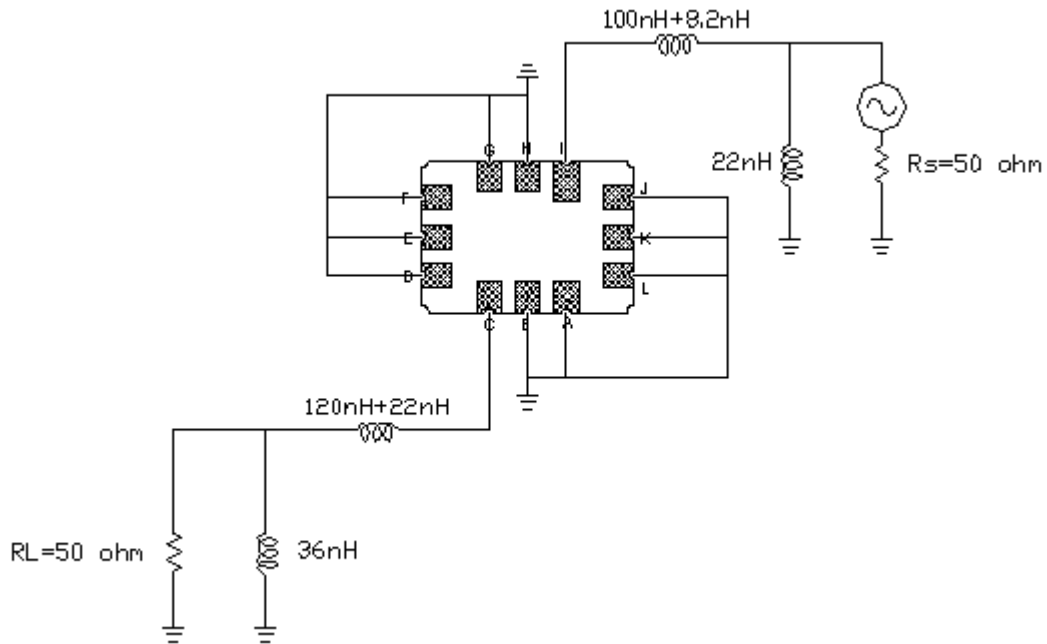
Fig. 4. Horizontal: 5MHz/Div, Vertical: 10dB/Div

**SAW Filter 135.420MHz**  
**Part No: MA09620**

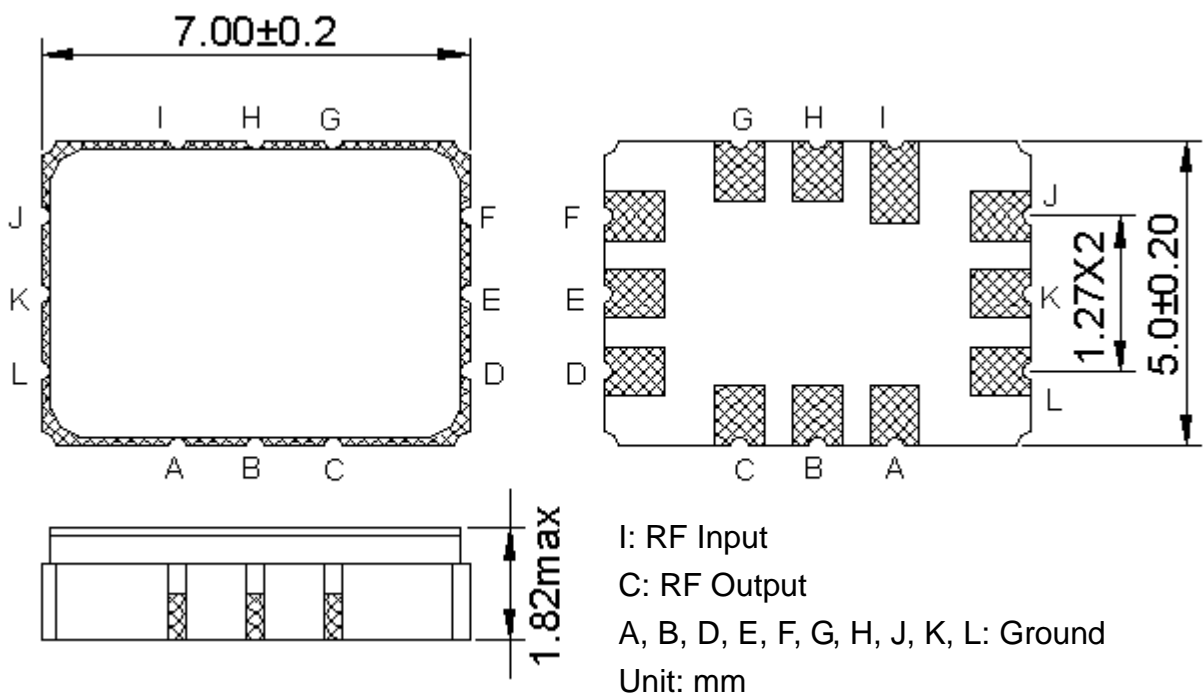
**Model: TB0571A**  
**Rev No: 1**

**D. MEASUREMENT CIRCUIT:**

Single ended input 50Ω to Single ended Output 50Ω



**E. OUTLINE DRAWING:**



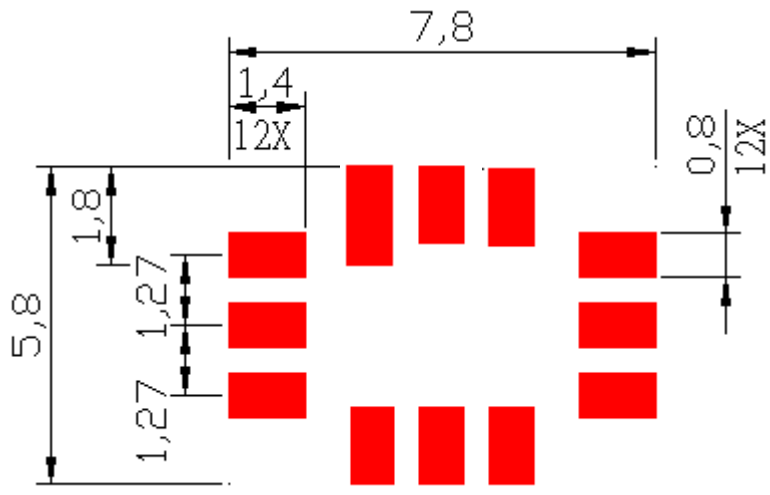
---

**SAW Filter 135.420MHz**  
**Part No: MA09620**

**Model: TB0571A**  
**Rev No: 1**

---

**F. PCB FOOTPRINT:**

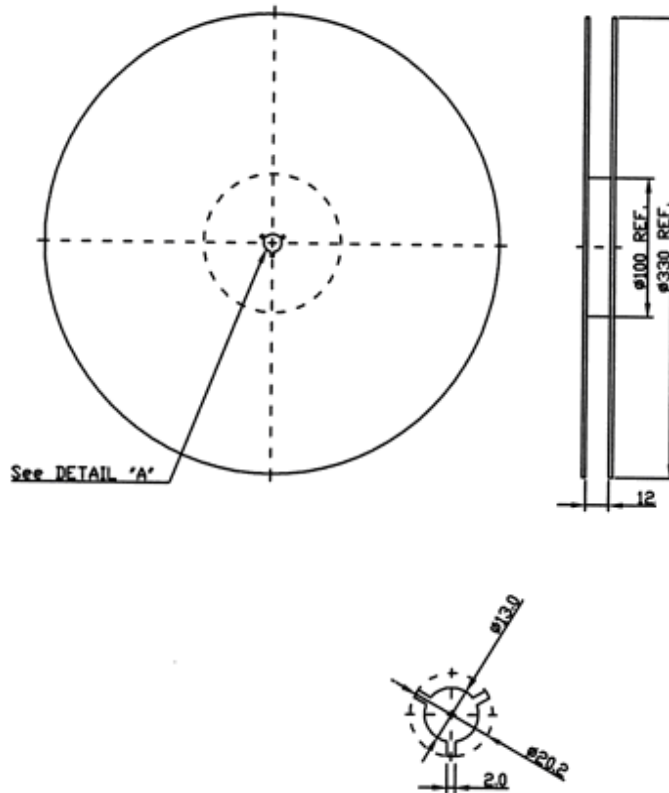


**SAW Filter 135.420MHz**  
**Part No: MA09620**

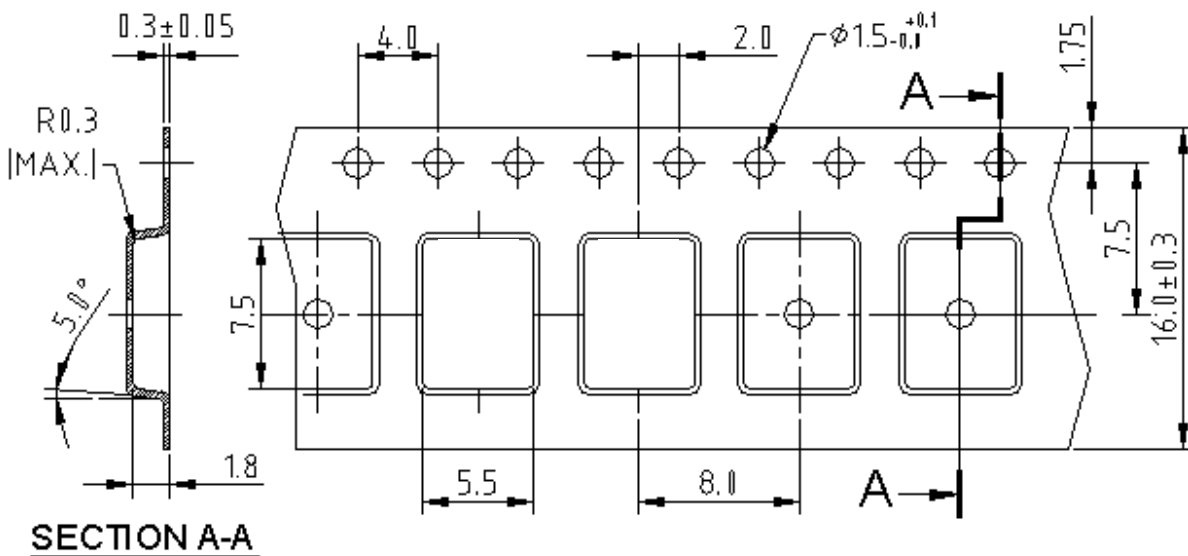
**Model: TB0571A**  
**Rev No: 1**

**G. PACKING:**

1. REEL DIMENSION



2. TAPE DIMENSION



**SAW Filter 135.420MHz**  
**Part No: MA09620**

**Model: TB0571A**  
**Rev No: 1**

**H. RECOMMENDED REFLOW PROFILE:**

