

**SAW Filter 611.0MHz**  
**Part No: MA09688**

**Model: TA0794A**  
**Rev No: 1**

**A. MAXIMUM RATING:**

1. Input Power Level: 10dBm
2. DC voltage: 3V
3. Operating Temperature: -20°C to +70°C
4. Storage Temperature: -40°C to +85°C

**B. ELECTRICAL CHARACTERISTICS:**

Item	Unit	Min.	Typ.	Max.
Center frequency Fc	MHz	-	611	-
Insertion Loss IL min (reference level)	dB	-	2.85	4.5
3dB Bandwidth BW -3dB	MHz	7	9.8	-
40dB Bandwidth BW -40dB		-	20.9	24
Amplitude Ripple 609.5 ~ 612.5MHz	dB	-	0.4	1.3
Rejection: (Reference level from 0dB)				
520 to 560MHz	dB	38	50	-
660 to 700MHz	dB	38	50	-
Source impedance Z <sub>S</sub>	Ω	-	50	-
Load impedance Z <sub>L</sub>	Ω	-	50	-

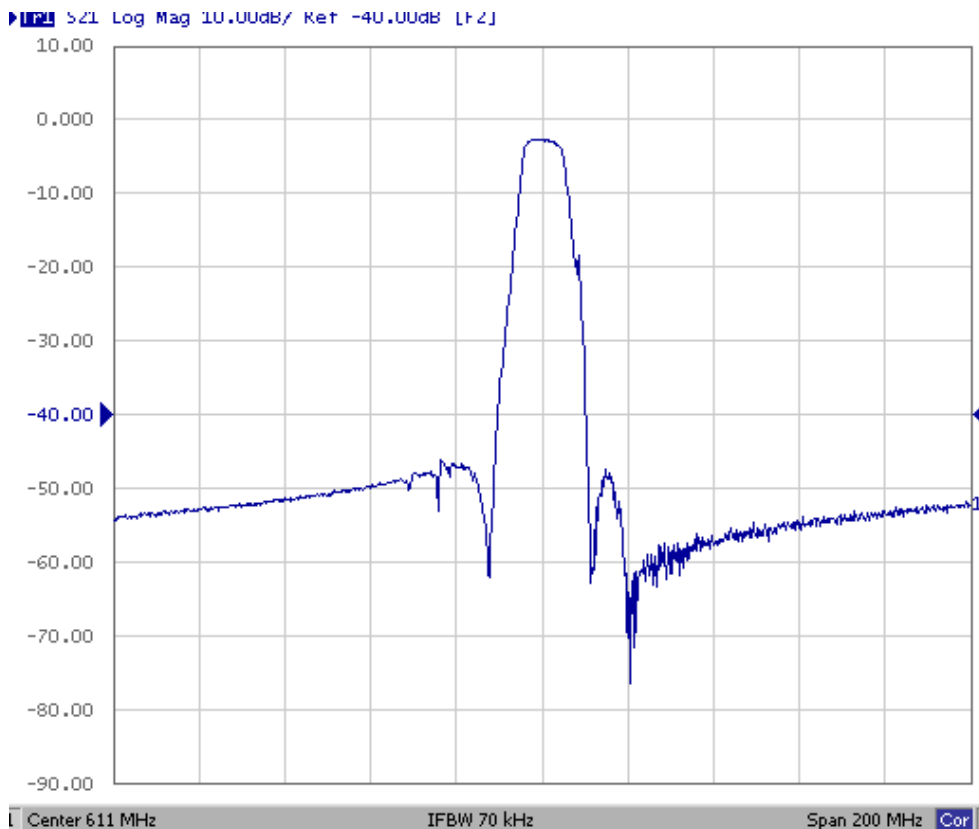
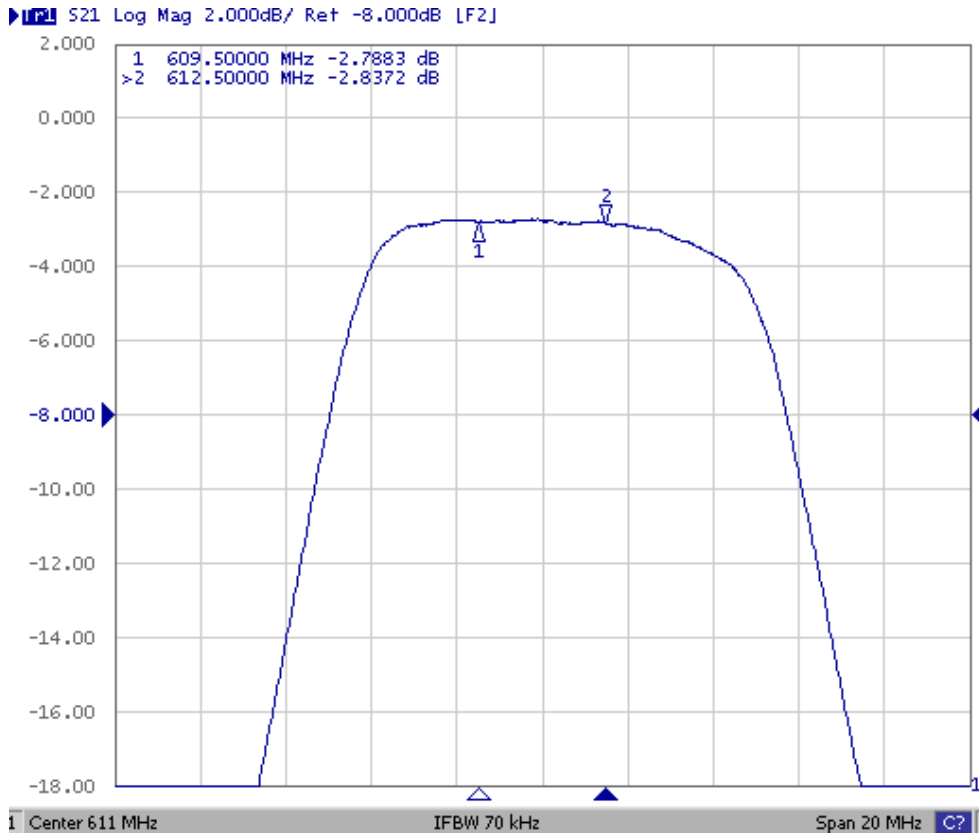
Note:

IL min is the minimum of the pass band attenuation. The center frequency Fc is the mean value of the upper and lower frequencies at the 3dB filter attenuation level relative to the IL min.

**SAW Filter 611.0MHz**  
**Part No: MA09688**

**Model: TA0794A**  
**Rev No: 1**

**C. FREQUENCY CHARACTERISTICS:**



**SAW Filter 611.0MHz**

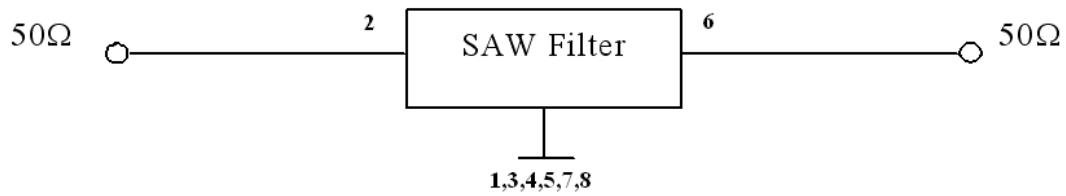
**Model: TA0794A**

**Part No: MA09688**

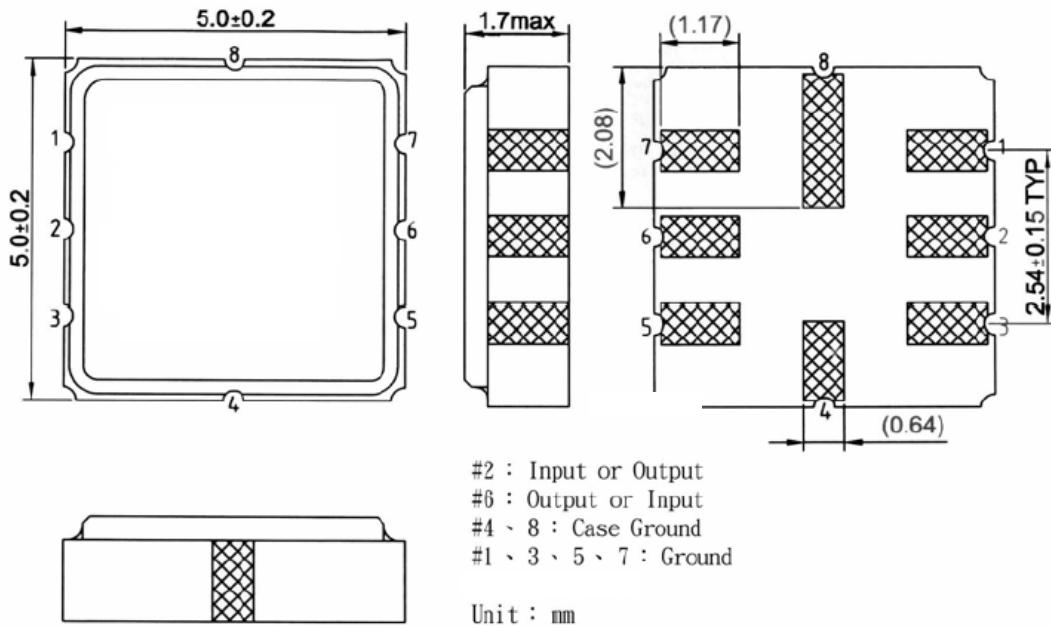
**Rev No: 1**

**D. MEASUREMENT CIRCUIT:**

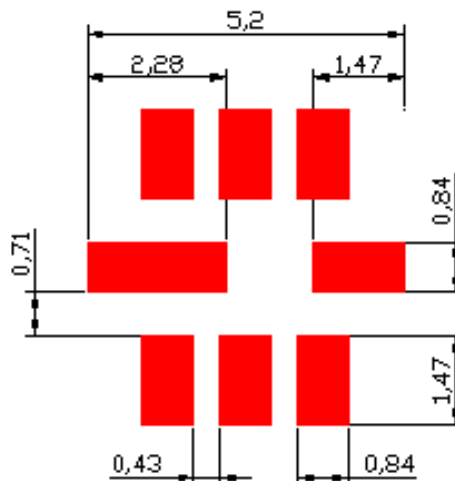
HP Network analyzer



**E. OUTLINE DRAWING:**



**F. PCB FOOTPRINT:**

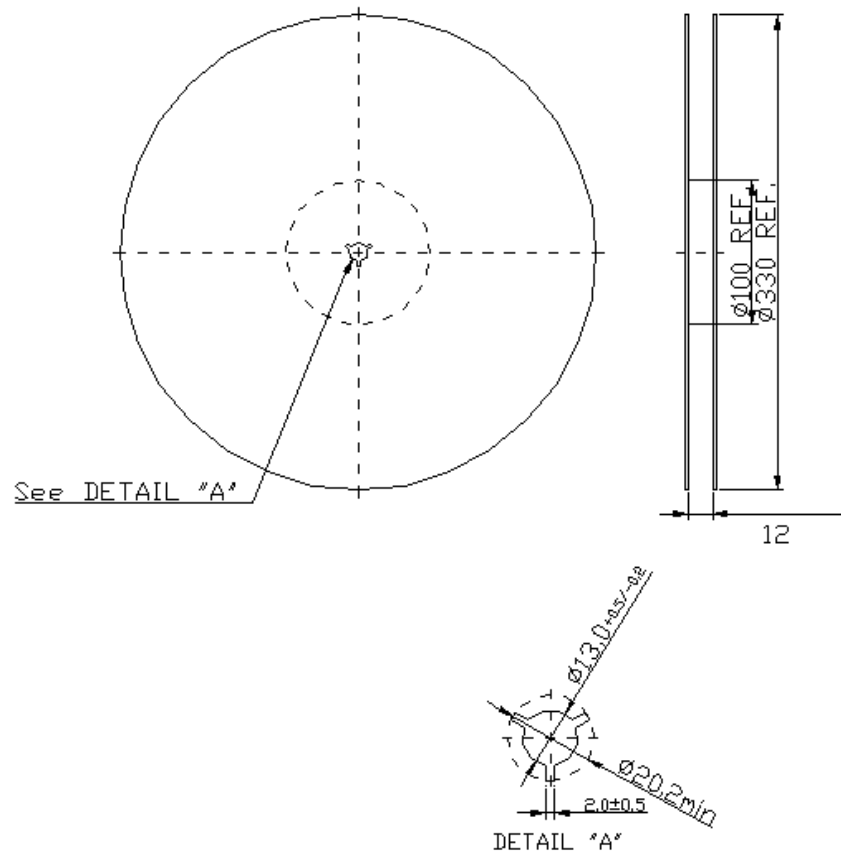


**SAW Filter 611.0MHz**  
**Part No: MA09688**

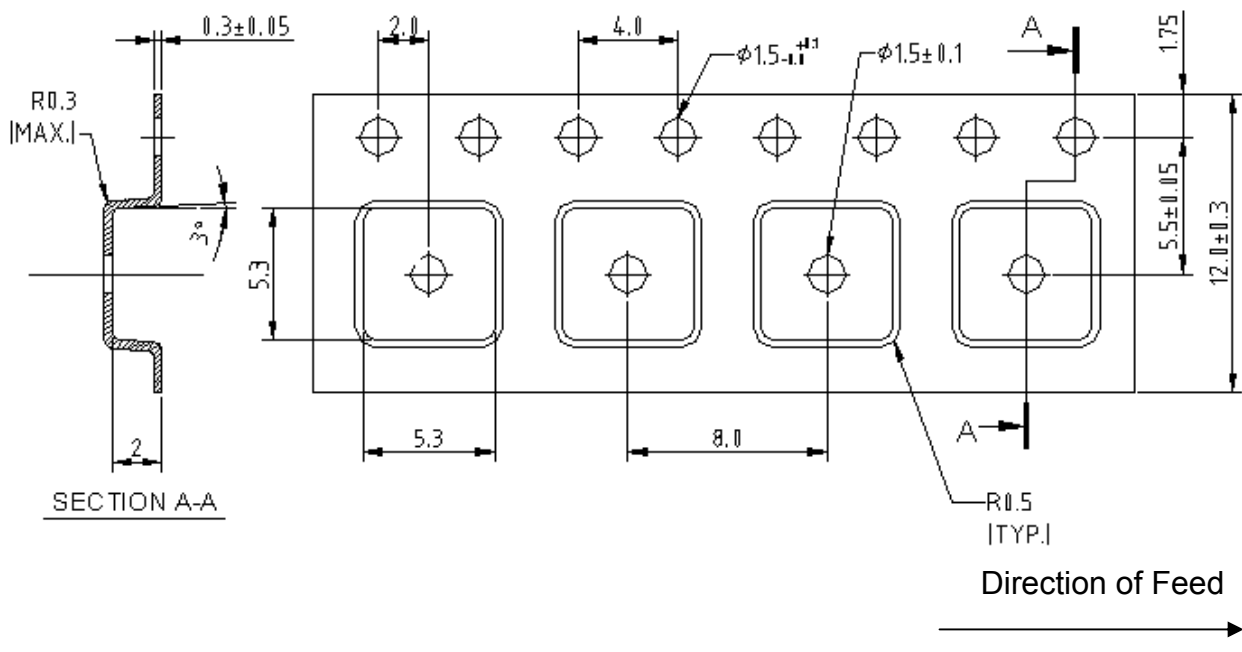
**Model: TA0794A**  
**Rev No: 1**

**G. PACKING:**

1. Reel Dimension



2. Tape Dimension



**SAW Filter 611.0MHz**  
**Part No: MA09688**

**Model: TA0794A**  
**Rev No: 1**

**H.RECOMMENDED REFLOW PROFILE:**

