

SAW Filter 268MHz

Model: TA0560A

Part No: MA09698

REV. NO: 2

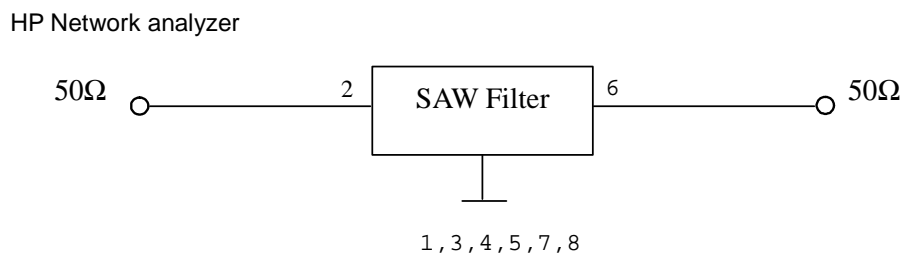
A. MAXIMUM RATING:

1. Input Power Level: 10dBm
2. DC voltage: 3 V
3. Operating Temperature: -10°C to +50°C
4. Storage Temperature: -40°C to +85°C

B. ELECTRICAL CHARACTERISTICS:

Item	Unit	Min.	Typ.	Max.
Center frequency Fc	MHz	-	268	-
Insertion Loss 266 ~ 270MHz IL	dB	-	1.75	3.0
Ripple 266 ~ 270MHz	dB	-	0.75	2.0
Absolute Attenuation: (Reference level from 0dB)				
Fc -100 to Fc -40 MHz	dB	40	47	-
Fc -40 to Fc -11 MHz	dB	30	42	-
Fc +11 to Fc +40 MHz	dB	15	35	-
Fc +40 to Fc +100 MHz	dB	38	43	-
Source impedance Z _s	Ω	-	50	-
Load impedance Z _L	Ω	-	50	-

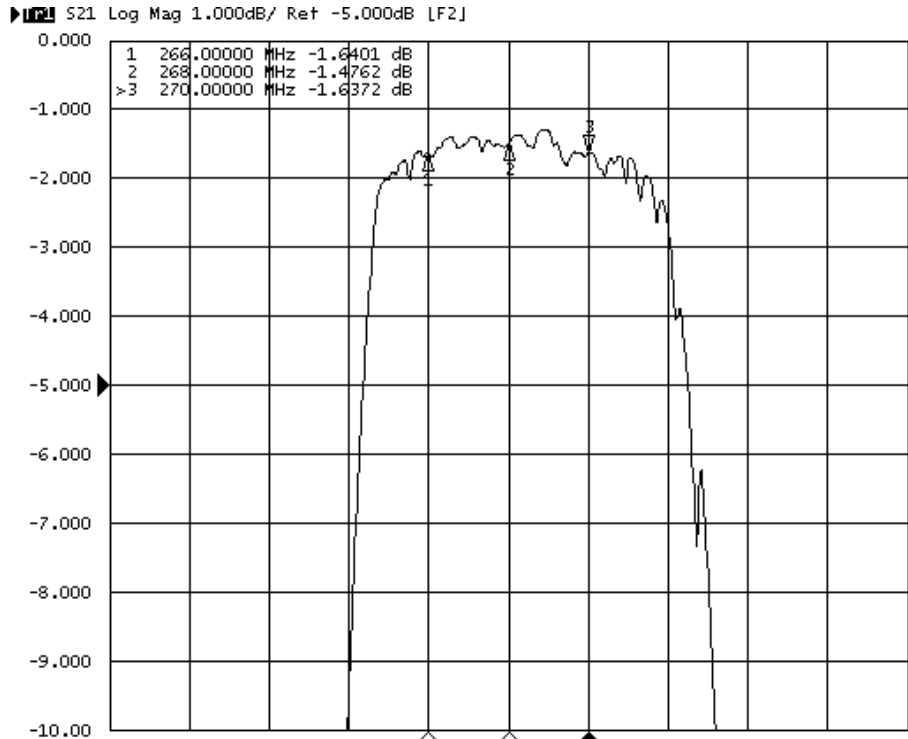
C. MEASUREMENT CIRCUIT:



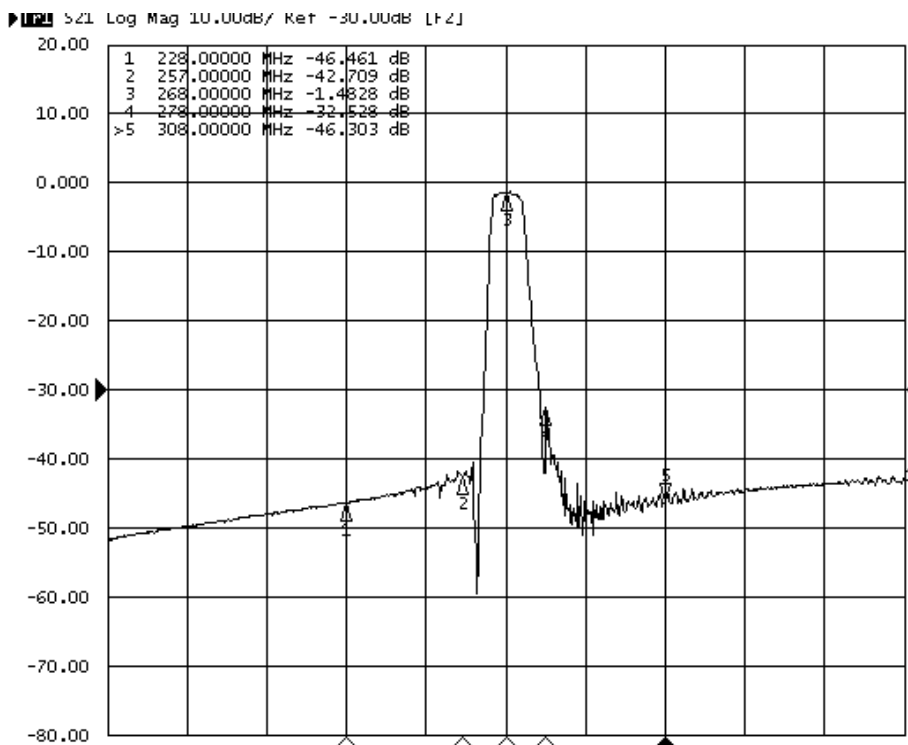
SAW Filter 268MHz
Part No: **MA09698**

Model: TA0560A
REV. NO: 2

D. FREQUENCY CHARACTERISTICS:



Center: 268MHz
Span: 20MHz



Center: 268MHz
Span: 200MHz

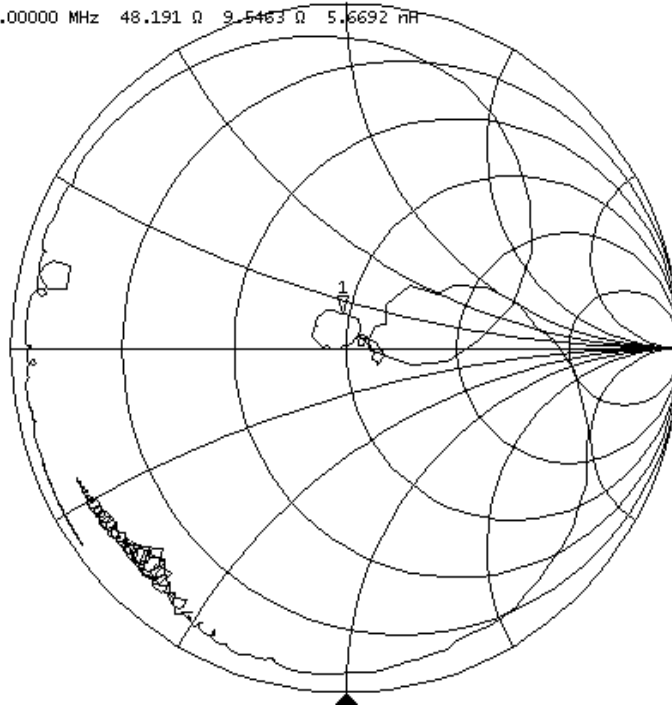
SAW Filter 268MHz
Part No: MA09698

Model: TA0560A
REV. NO: 2

S11

▶ S11 Smith (R+jX) Scale 1.0000 [F2]

>1 268.00000 MHz 48.191 Ω 9.5463 Ω 5.6692 nH



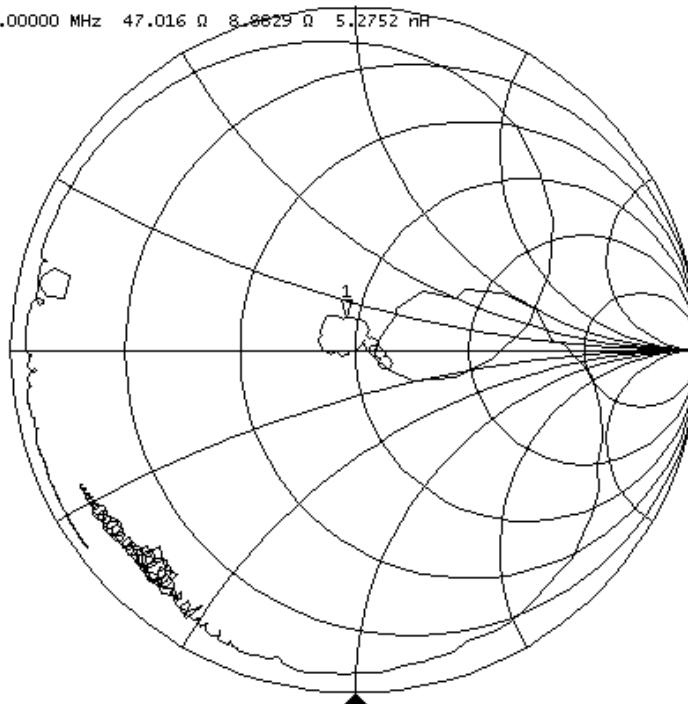
Center: 268MHz

Span: 100MHz

S22

▶ S22 Smith (R+jX) Scale 1.0000 [F2]

>1 268.00000 MHz 47.016 Ω 8.8829 Ω 5.2752 nH



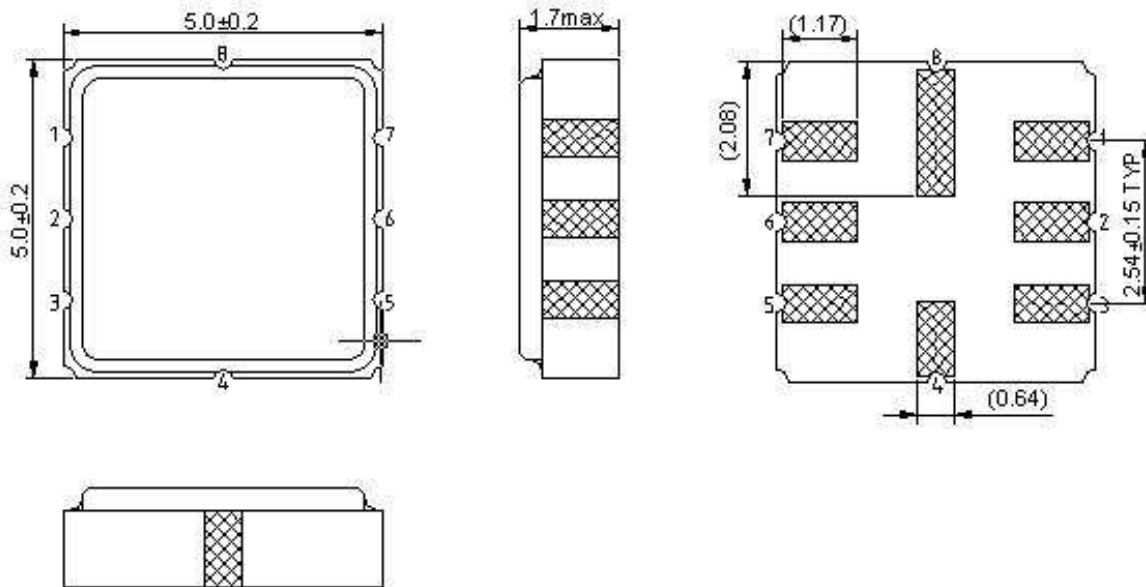
Center: 268MHz

Span: 100MHz

SAW Filter 268MHz
Part No: **MA09698**

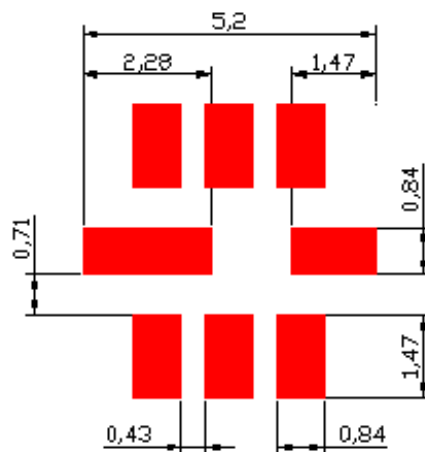
Model: TA0560A
REV. NO: 2

E. OUTLINE DRAWING:



- 2: Input
 - 6: Output
 - 1, 3, 4, 5, 7, 8: Ground
- Unit: mm

F. PCB FOOTPRINT:

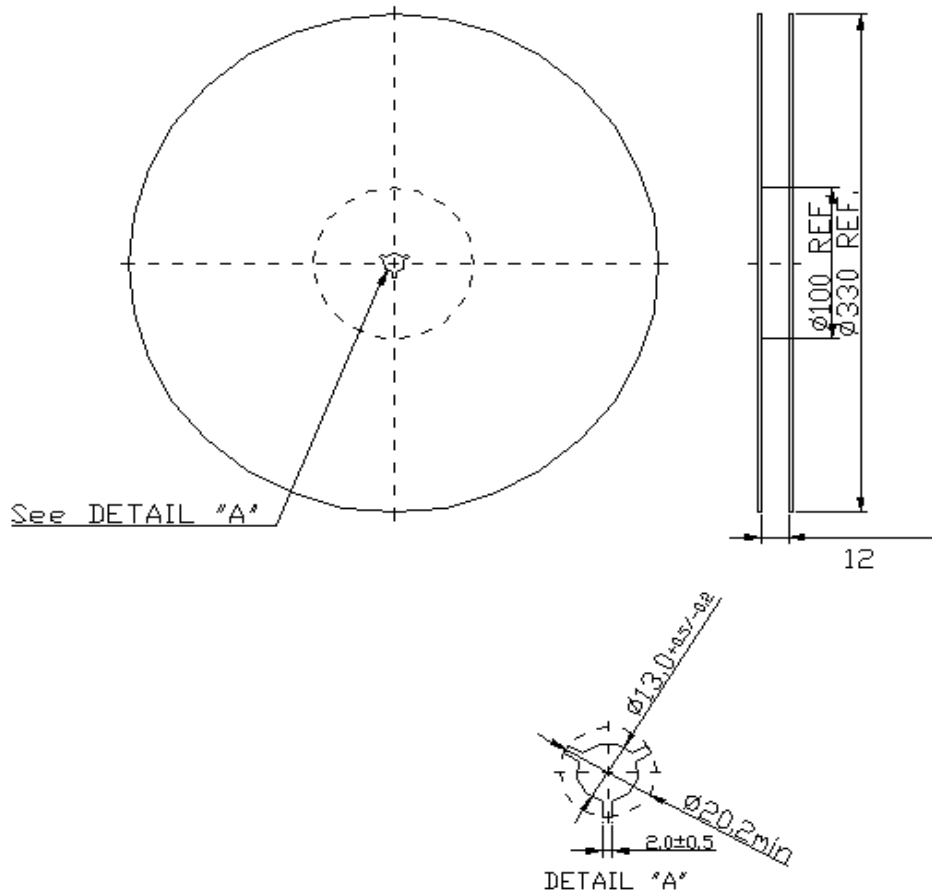


SAW Filter 268MHz
Part No: MA09698

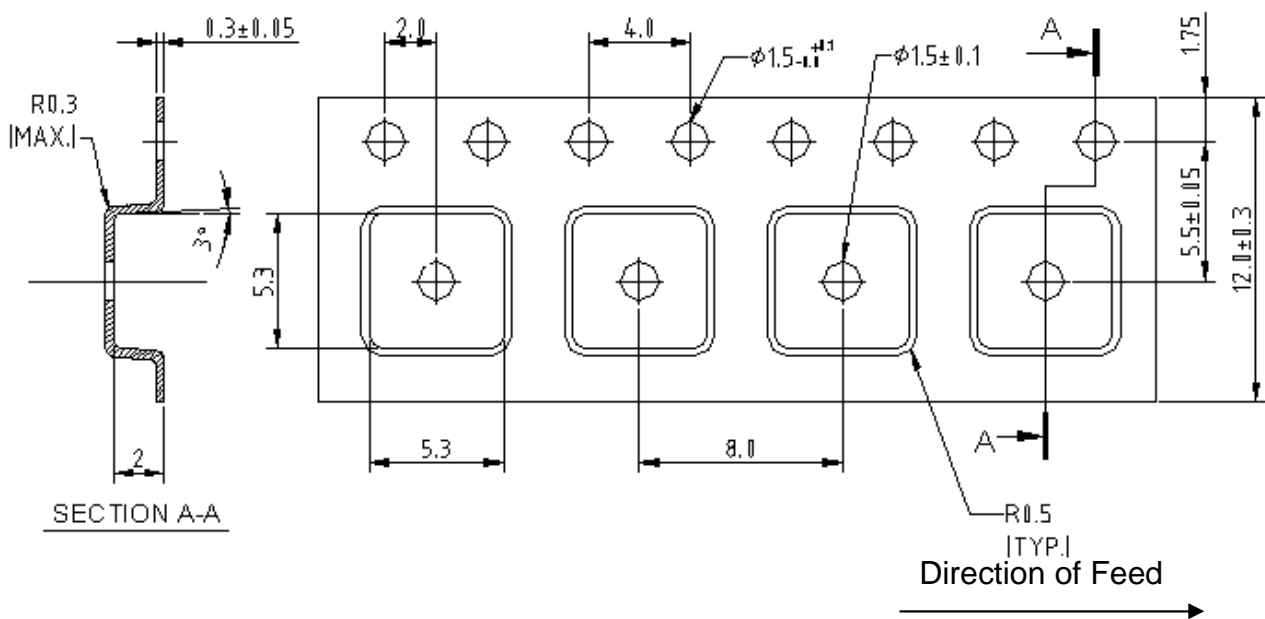
Model: TA0560A
REV. NO: 2

G. PACKING:

1. REEL DIMENSION



2. TAPE DIMENSION



SAW Filter 268MHz
Part No: **MA09698**

Model: TA0560A
REV. NO: 2

H. RECOMMENDED REFLOW PROFILE:

