

SAW Filter 456.0MHz

Model: TB0463A

Part No: MA09759

REV. NO.: 1

A. MAXIMUM RATING:

1. Operating Temperature: -20 °C ~ +60 °C
2. Storage Temperature: -40 °C ~ +85 °C
3. Input Power Level: 10 dBm

B. CHARACTERISTICS:

1. Ambient Temperature: 25 °C
2. Optimal Source Impedance(Balanced): 200 ohm
3. Optimal Load Impedance(Balanced): 200 ohm

Characteristics	Value			Note
	Min.	Typ.	Max.	
Center frequency F_C MHz	-	456	-	-
Minimum Insertion Loss (452.1~459.9MHz) dB		7.9	9	-
Passband Ripple (452.1~459.9MHz) dB	-	0.8	1.25	-
30dB Bandwidth MHz	-	17.4	18.0	-
Attenuation:(Reference level from minimum insertion loss)				dB
1) 10 MHz....256 MHz dB	30	62	-	-
2) 256 MHz ~ 360 MHz dB	40	55	-	-
3) 360 MHz ~ 421 MHz dB	43	47	-	-
4) 421 MHz ~ 441 MHz dB	38	42	-	-
5) 441 MHz ~ 443.25 MHz dB	36	42	-	-
6) 471.55 MHz ~ 491 MHz dB	36	42	-	-
7) 491 MHz ~ 551 MHz dB	40	44	-	-
8) 552 MHz ~ 656 MHz dB	40	52	-	-
8) 656 MHz ~ 946 MHz dB	30	62	-	-
Absolute Group Delay at F_o nS	-	388	450	-
Group Delay Ripple (451.8~460.2MHz) dB	-	26	75	-
Input Return Loss(452.1~459.9MHz) dB	10	24	-	-
Output Return Loss (452.1~459.9MHz) dB	10	14	-	-
Temp Coefficient ppm/°C	-23			

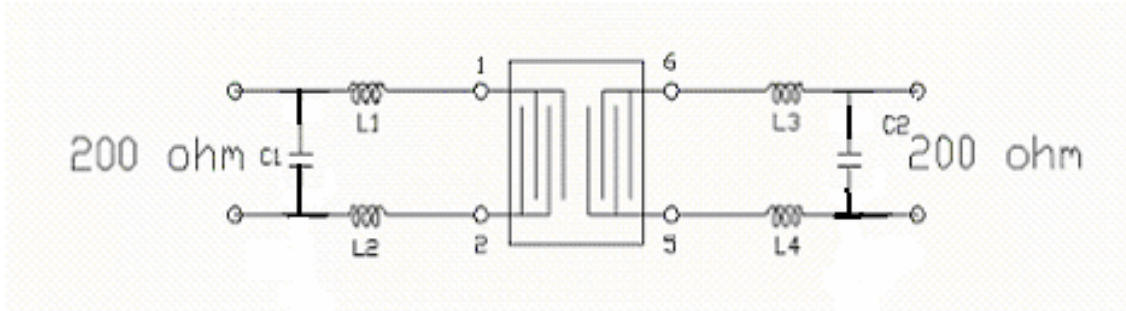
SAW Filter 456.0MHz

Model: TB0463A

Part No: MA09759

REV. NO.: 1

C. MEASUREMENT CIRCUIT:



C1 = 15pF L1=L2=18nH C2=12pF L3=L4=15nH

D. Frequency Characteristics :

1. S21 Response

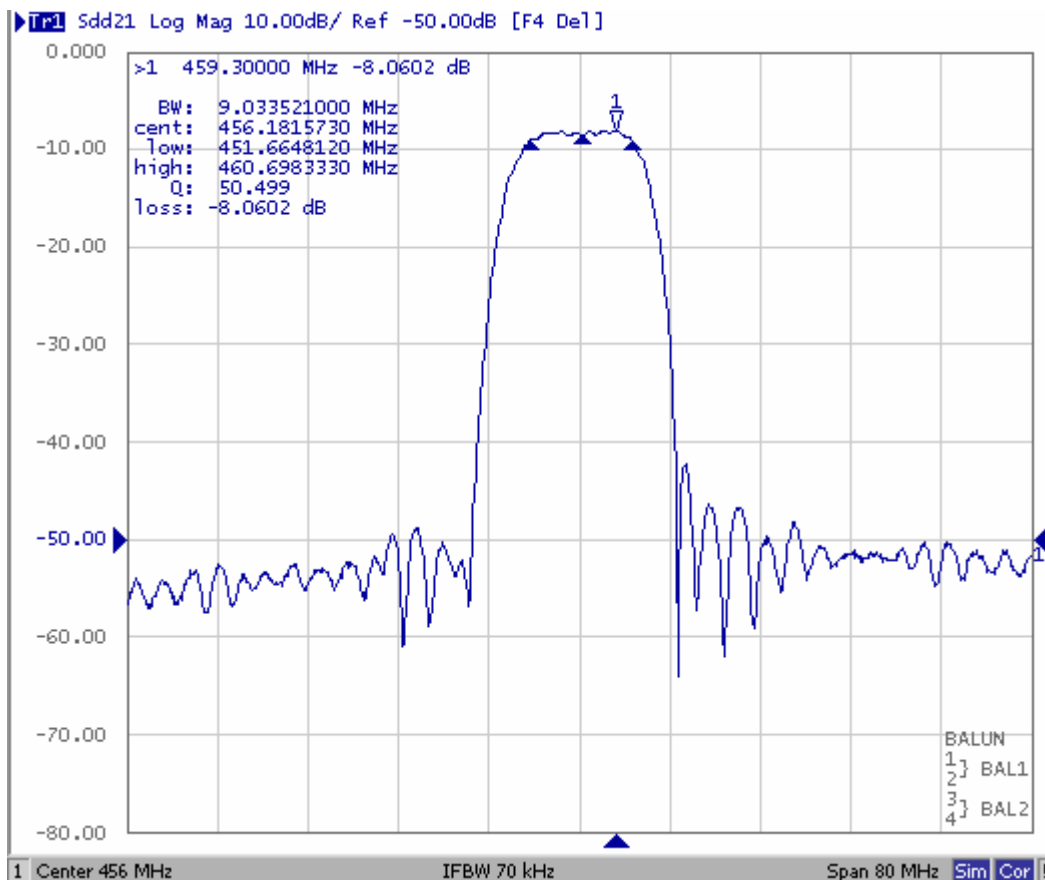


Fig1. Horizontal: 8MHz/Div Vertical: 10dB/Div

SAW Filter 456.0MHz
Part No: MA09759

Model: TB0463A
REV. NO.: 1

2. S21 Response (Group delay ripple of Passband)

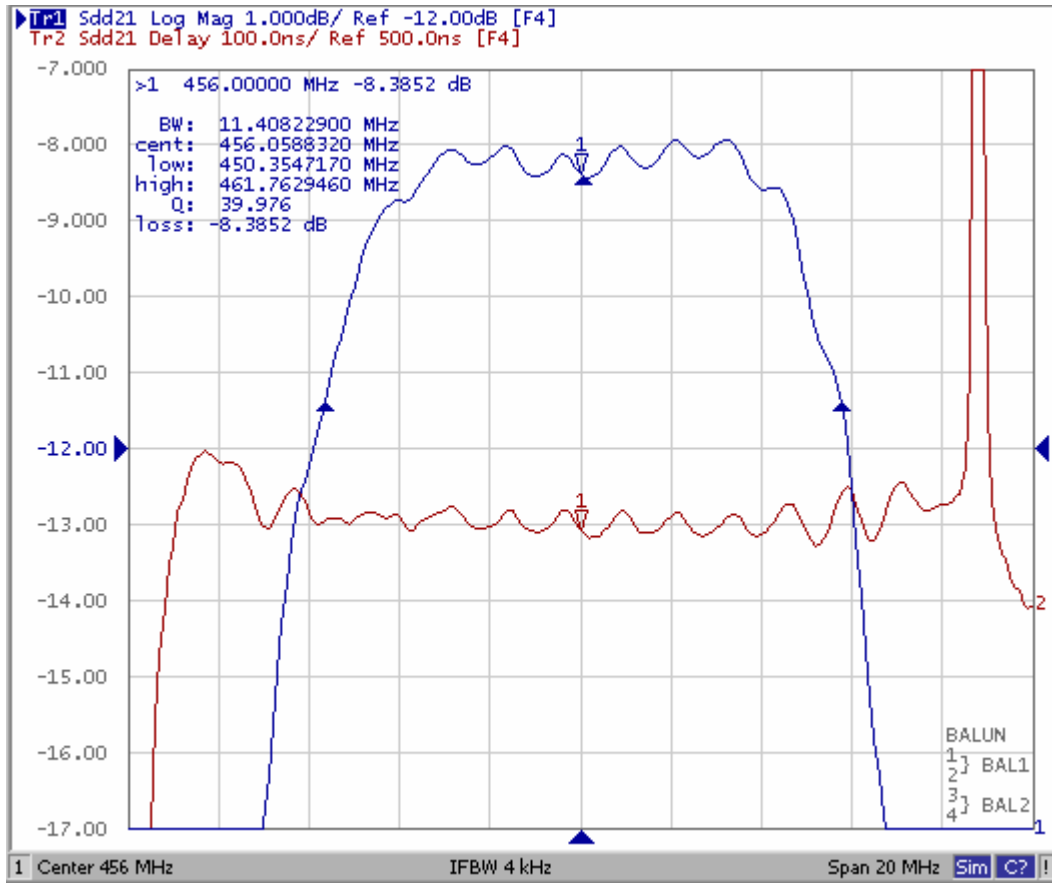


Fig2. Horizontal: 2MHz/Div Vertical: 1dB/Div. Vertical: 100ns/Div

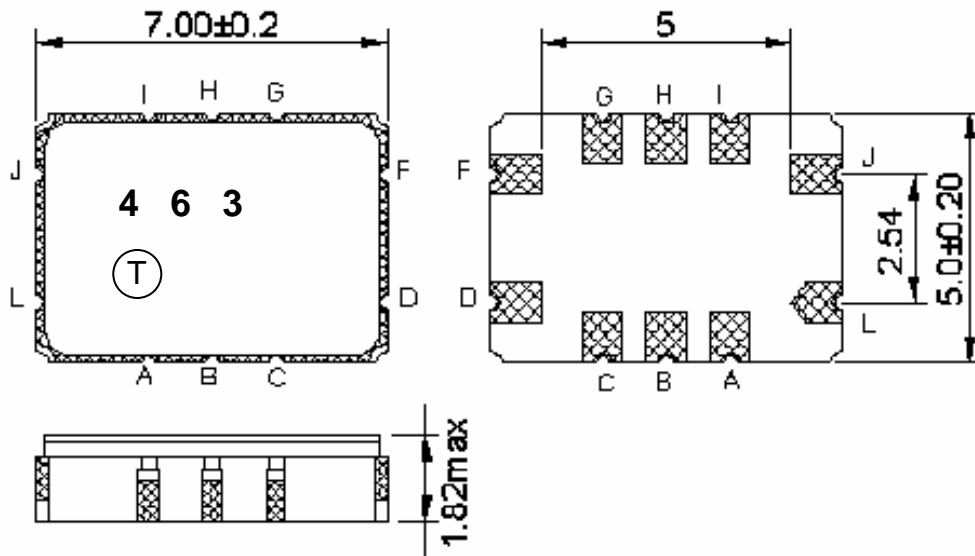
E. Outline Drawing:

SAW Filter 456.0MHz

Model: TB0463A

Part No: MA09759

REV. NO.: 1



Pin J,L : Balanced Input
Pin F,D : Balanced Output
Pin A,B ,C ,I,H,G : To be Ground
Unit : mm

SAW Filter 456.0MHz

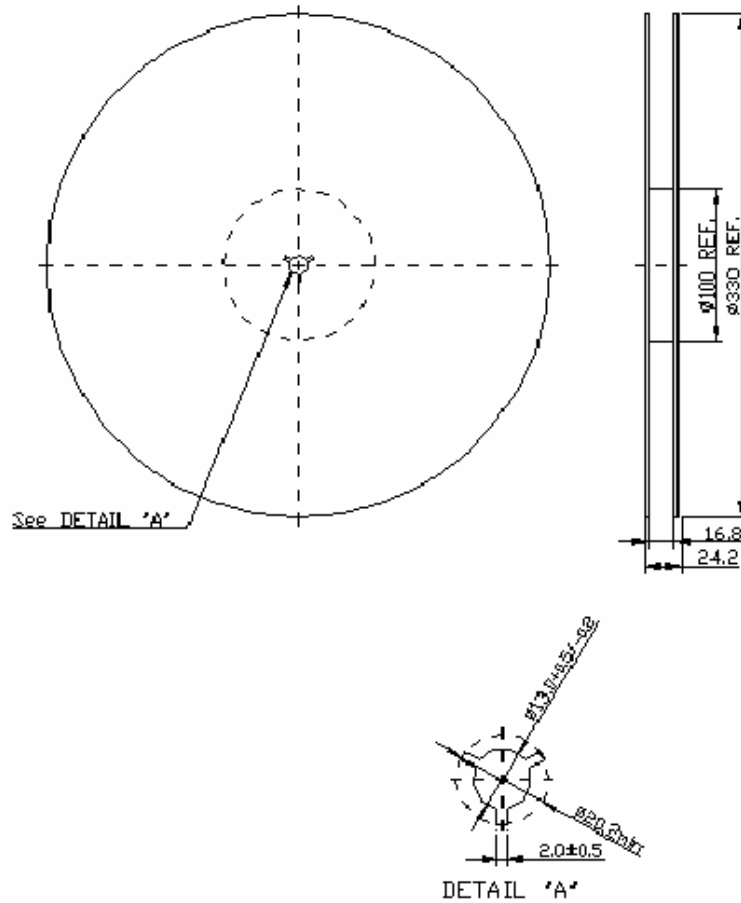
Model: TB0463A

Part No: MA09759

REV. NO.: 1

F. PACKING:

1. REEL DIMENSION



2. TAPE DIMENSION

