

SAW Filter 638.0MHz
Part No: MP01565

Model: TA0817A
Rev. No: 1

A. MAXIMUM RATING:

1. Input Power Level: 10dBm
2. DC voltage: 5V
3. Operating Temperature: -40°C to +85°C
4. Storage Temperature: -40°C to +85°C

B. ELECTRICAL CHARACTERISTICS:

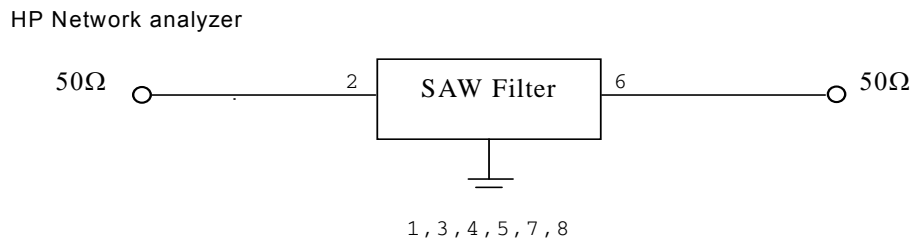
Item	Unit	Min.	Typ.	Max.
Center frequency Fc	MHz	-	638	-
Insertion loss at Fc IL	dB	-	2.4	3.5
3dB bandwidth	MHz	-	11	-
Ripple (636.5 ~ 639.5MHz)	dB	-	0.18	1.0
Attenuation (Reference level from 0dB)				
10 ~ 618MHz	dB	40	44.5	-
618 ~ 628MHz	dB	8	30.7	-
656 ~ 660MHz	dB	35	46.0	-
660 ~ 700MHz	dB	40	48.9	-
Temperature Coefficient	ppm/°C	-	-36	-
Source impedance Z _S	Ω	-	50	-
Load impedance Z _L	Ω	-	50	-

SAW Filter 638.0MHz
Part No: MP01565

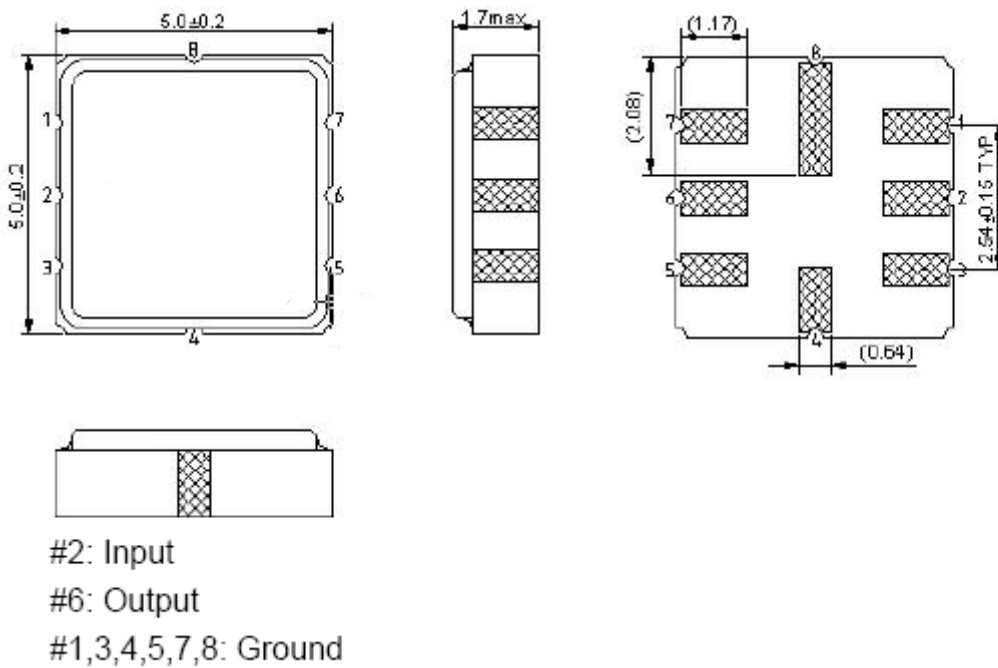
Model: TA0817A
Rev. No: 1

C. MEASUREMENT CIRCUIT:

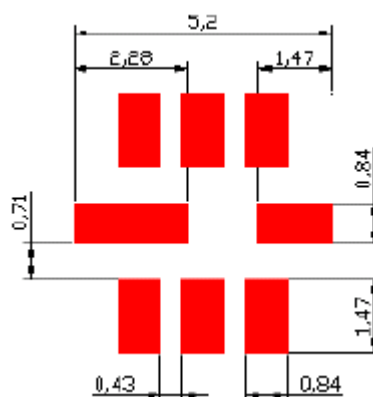
50Ω Test circuit (single-ended / single-ended)



D. OUTLINE DRAWING:



E. PCB FOOTPRINT:

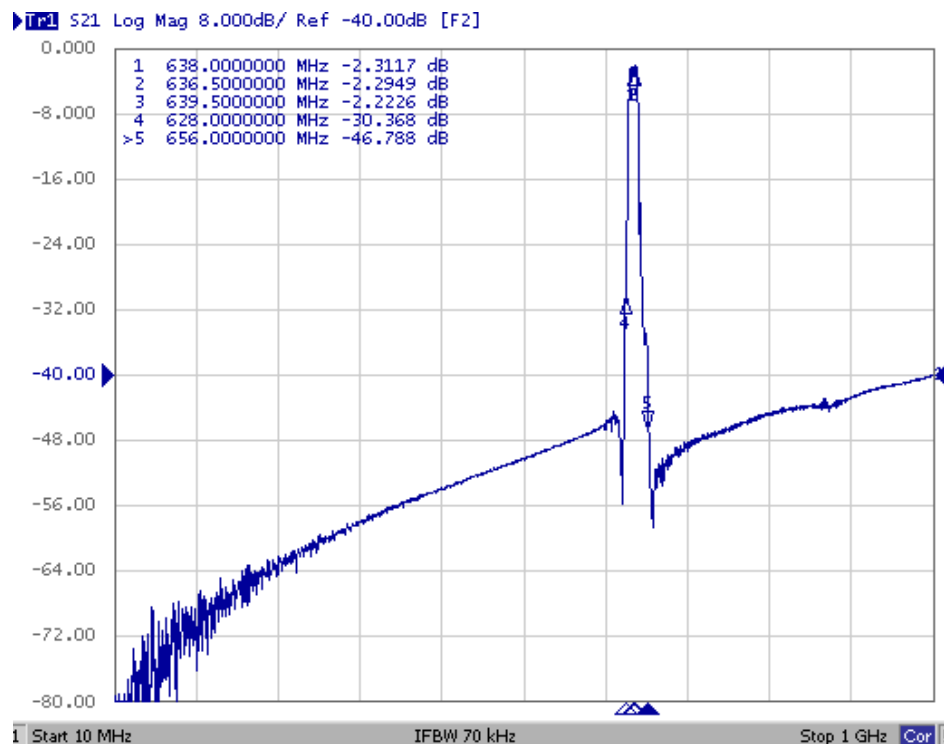
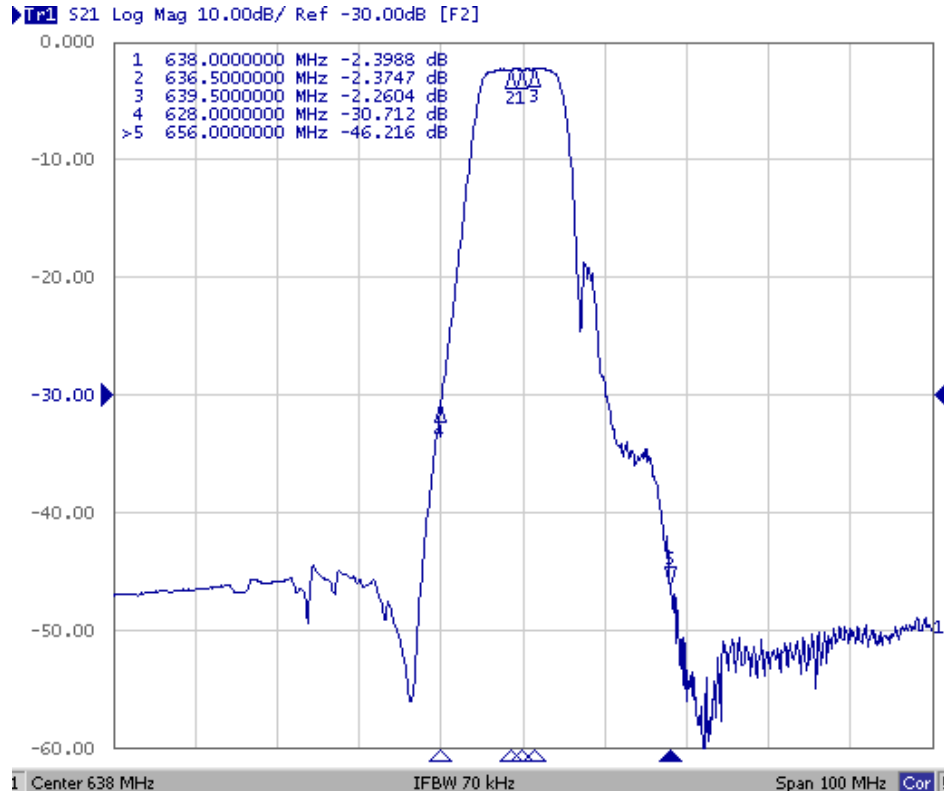


SAW Filter 638.0MHz
Part No: MP01565

Model: TA0817A
Rev. No: 1

F. FREQUENCY CHARACTERISTICS:

1. Transfer function

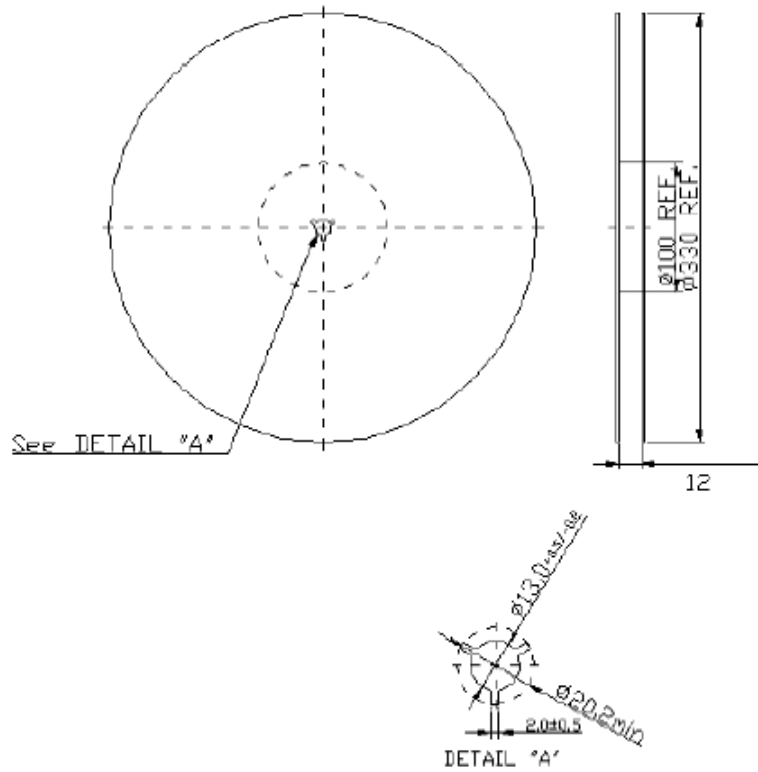


SAW Filter 638.0MHz
Part No: MP01565

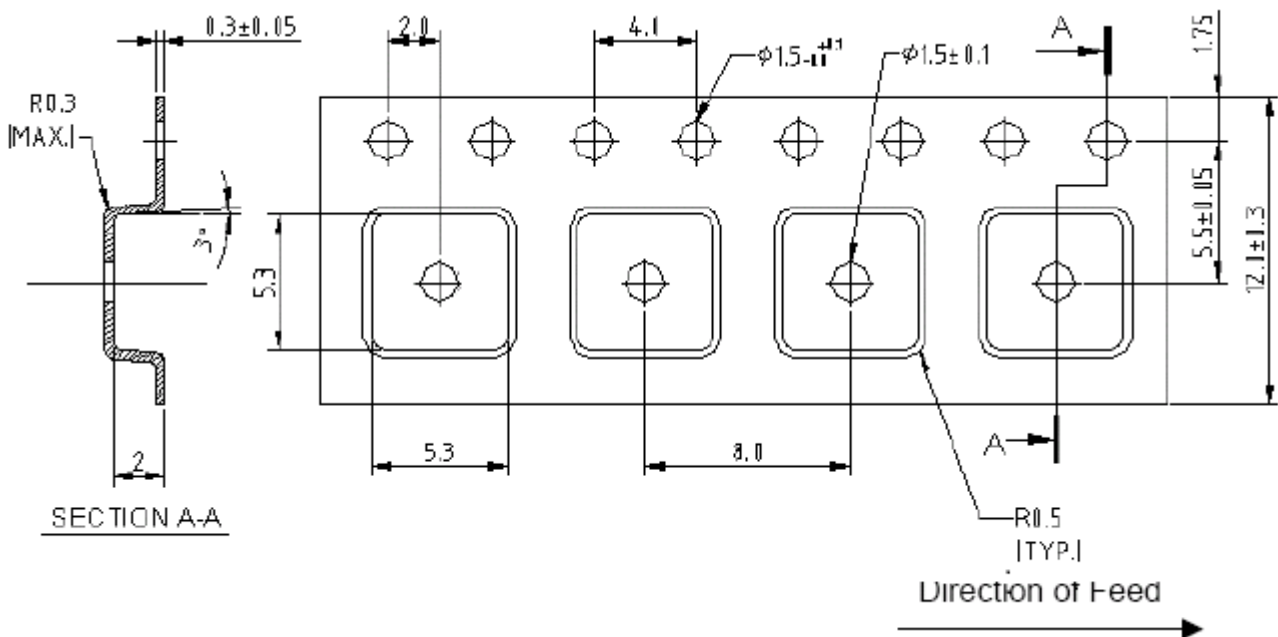
Model: TA0817A
Rev. No: 1

G. PACKING:

1. Reel Dimension



2. Tape Dimension



SAW Filter 638.0MHz
Part No: MP01565

Model: TA0817A
Rev. No: 1

H.RECOMMENDED REFLOW PROFILE:

