

**SAW Filter 429.250MHz**  
**Part No: MP01686**

**Model: TA0707A**  
**Rev No: 1**

**A. MAXIMUM RATING:**

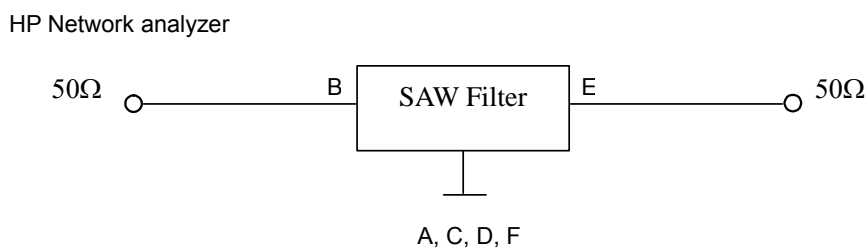
1. Input Power Level: 10dBm
2. DC voltage: 3V
3. Operating Temperature: -10°C to 60°C
4. Storage Temperature: -30°C to +85°C

**B. CHARACTERISTICS:**

Item	Unit	Min.	Typ.	Max.
Center frequency Fc	MHz	-	429.25	-
Insertion loss Fc ± 1.0MHz IL	dB	-	2.0	4.0
Amplitude ripple Fc ± 1.0MHz	dB	-	0.5	2.0
Attenuation (Reference level from 0dB)				
417.1 ~ 420.1MHz	dB	8	29	-
383.0 ~ 386.8 MHz	dB	45	50	-
471.0 ~ 474.0 MHz	dB	45	51	-
Source impedance Z <sub>S</sub>	Ω	-	50	-
Load impedance Z <sub>L</sub>		-	50	-

Note: No matching network required for operation at 50Ω

**C. MEASUREMENT CIRCUIT:**

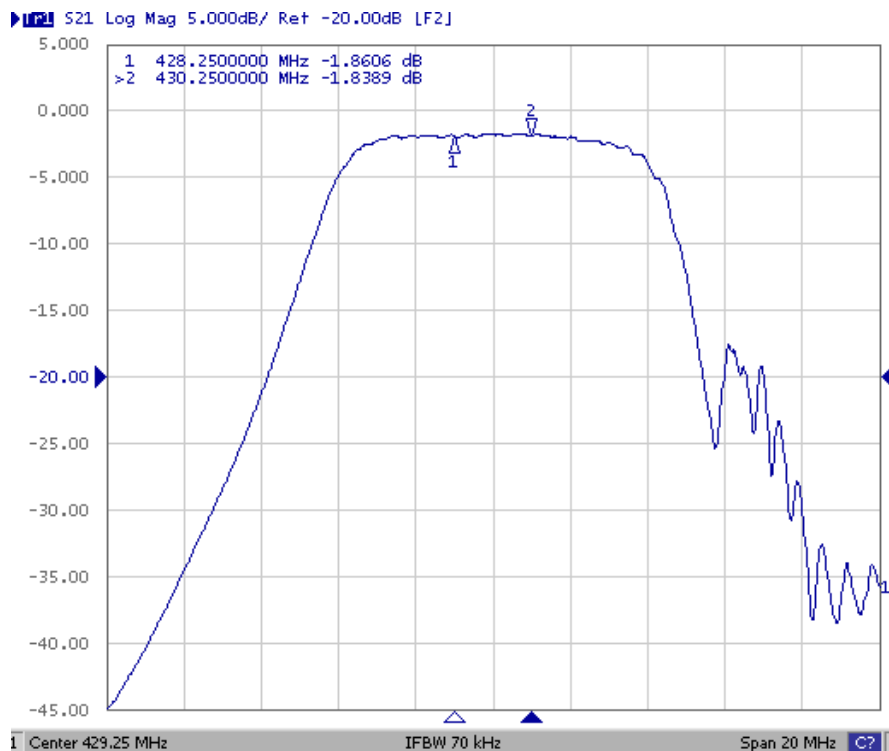
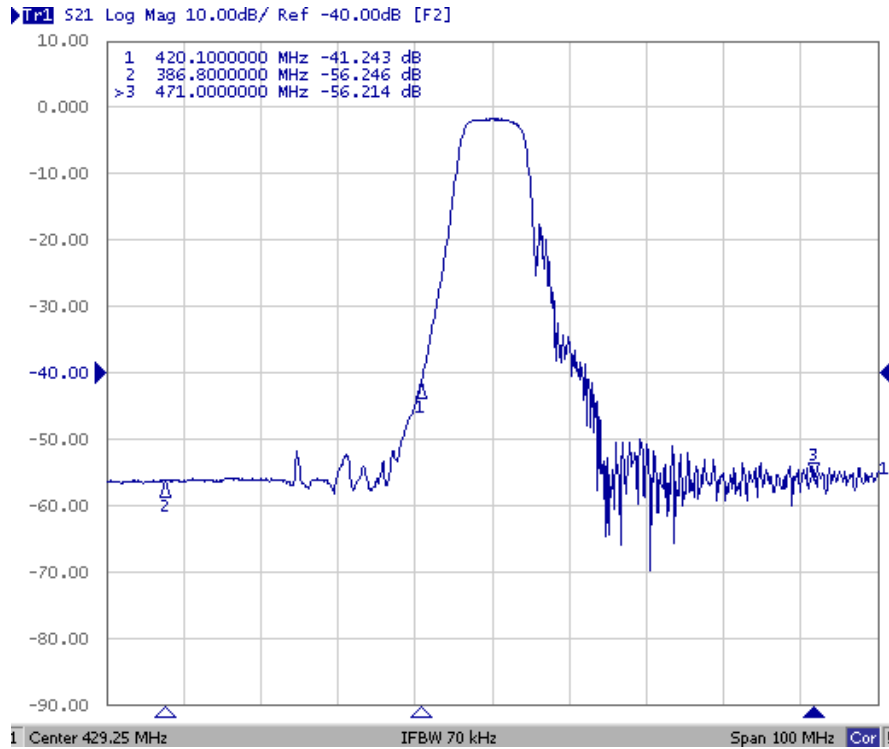


**SAW Filter 429.250MHz**  
**Part No: MP01686**

**Model: TA0707A**  
**Rev No: 1**

**D. FREQUENCY CHARACTERISTICS:**

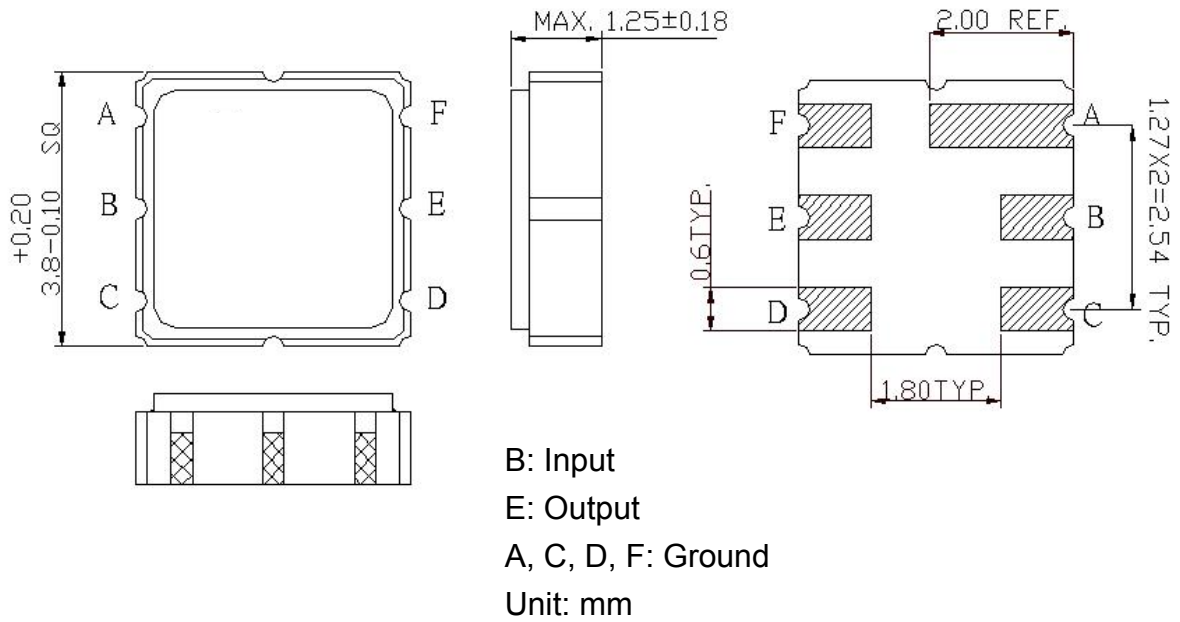
Transfer Function



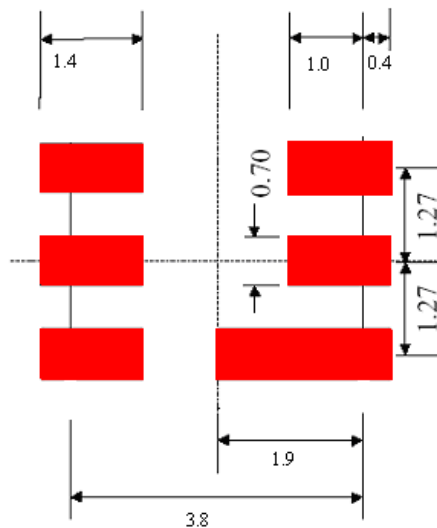
**SAW Filter 429.250MHz**  
**Part No: MP01686**

**Model: TA0707A**  
**Rev No: 1**

**E. OUTLINE DRAWING:**



**F. PCB FOOTPRINT:**

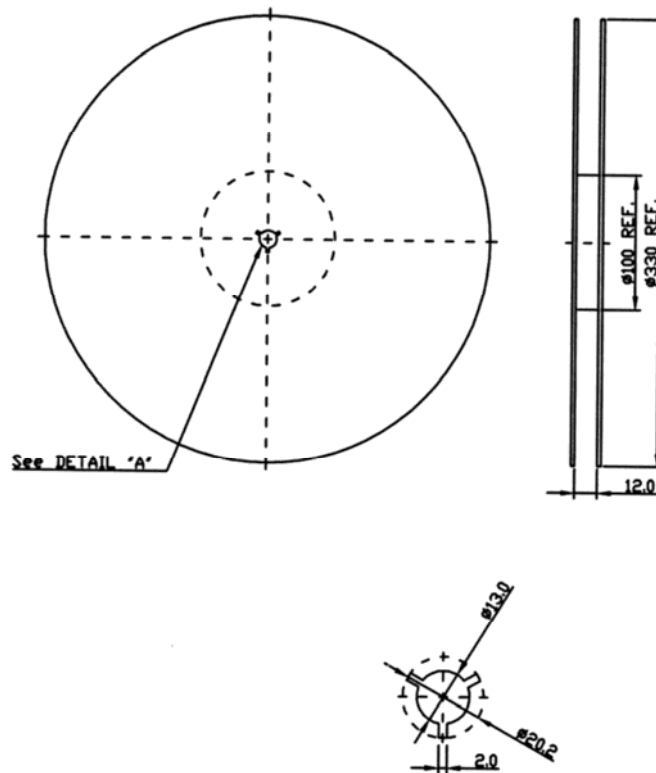


**SAW Filter 429.250MHz**  
**Part No: MP01686**

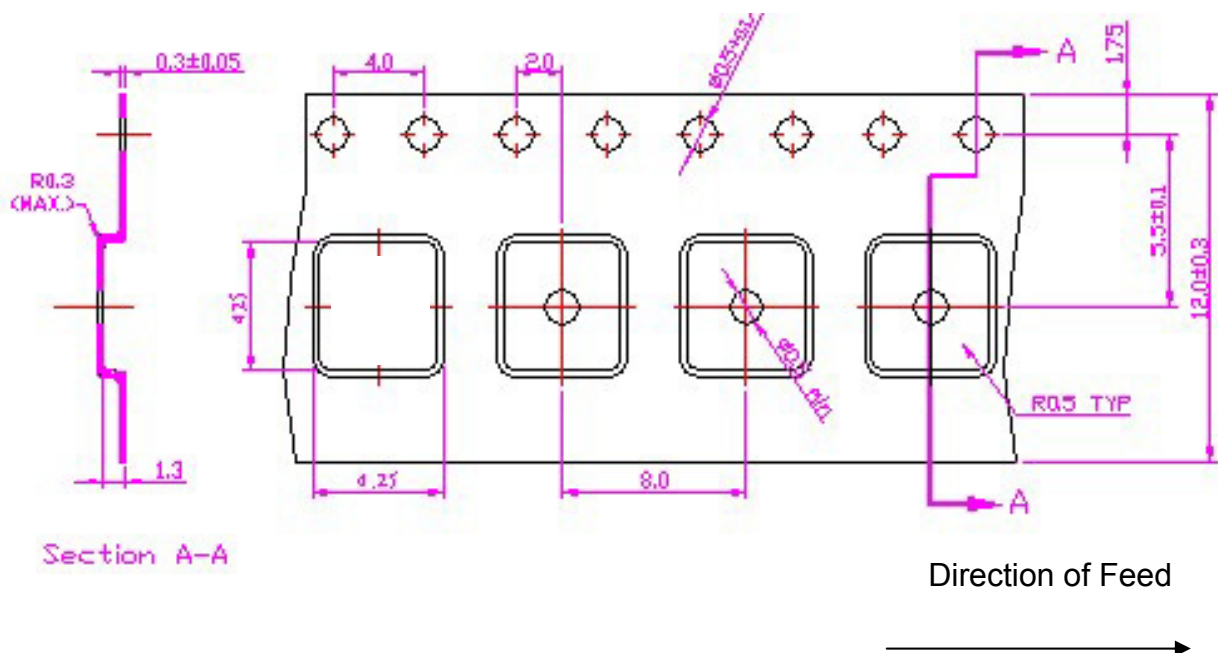
**Model: TA0707A**  
**Rev No: 1**

**G. PACKING:**

1. Reel Dimension



2. Tape Dimension



**SAW Filter 429.250MHz**  
**Part No: MP01686**

**Model: TA0707A**  
**Rev No: 1**

**H. REFLOW PROFILE:**

