

SAW Filter 442.5MHz

Model: TB0658A

Part No: MP02089

REV. NO.: 1

A. MAXIMUM RATING:

1. Operating Temperature: -25°C to +70°C
2. Storage Temperature: -40°C to +85°C

B. ELECTRICAL CHARACTERISTICS:

1. Ambient Temperature: 25°C

Characteristics	Value			Note
	Min.	Typ.	Max.	
Center frequency F_C MHz	-	442.5	-	-
Minimum Insertion loss I.L. dB	-	10.2	13.0	-
1 dB Bandwidth MHz	15.0	18.0	-	-
3 dB Bandwidth MHz	18.0	20.6	-	-
Ripple (435.0~450.0MHz) dB	-	0.2	1	-
Group-delay Ripple (435.0~450.0MHz) nsec	-	12	100	-
Attenuation (Reference level from Minimum insertion loss)				
(1) 270.0~405.0MHz dB	35	60	-	-
(2) 480.0~615.0MHz dB	40	56	-	-

SAW Filter 442.5MHz

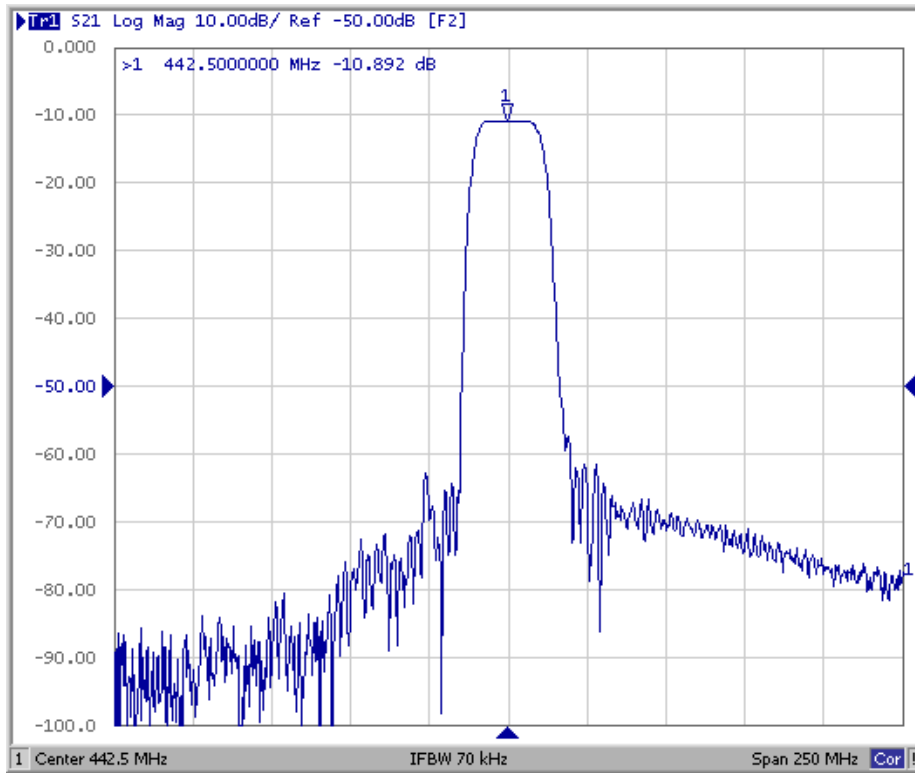
Model: TB0658A

Part No: MP02089

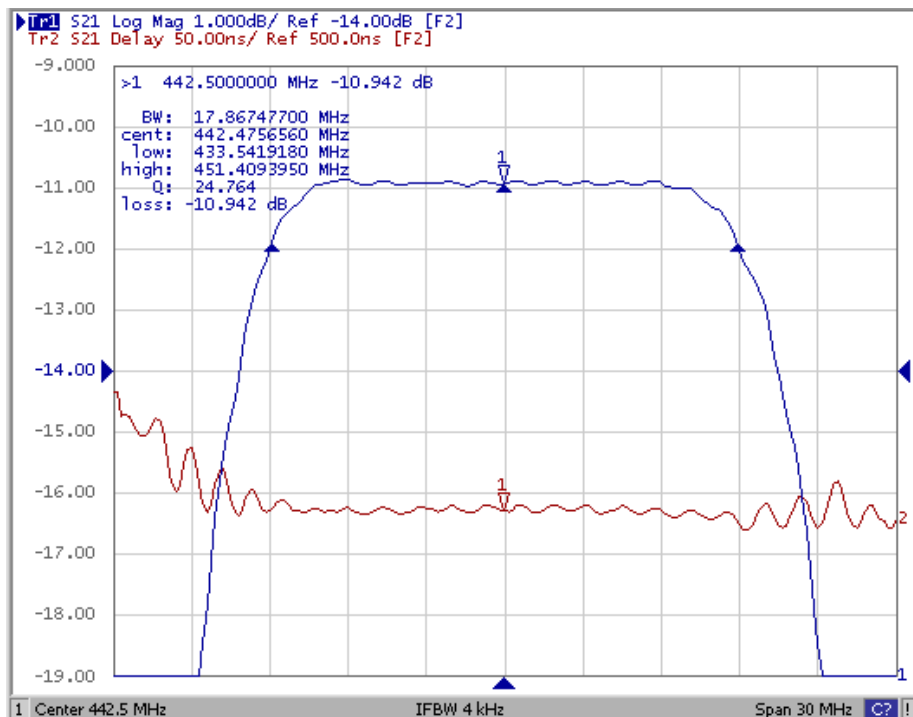
REV. NO.: 1

C. FREQUENCY CHARACTERISTICS:

S21 Response: (span250MHz)



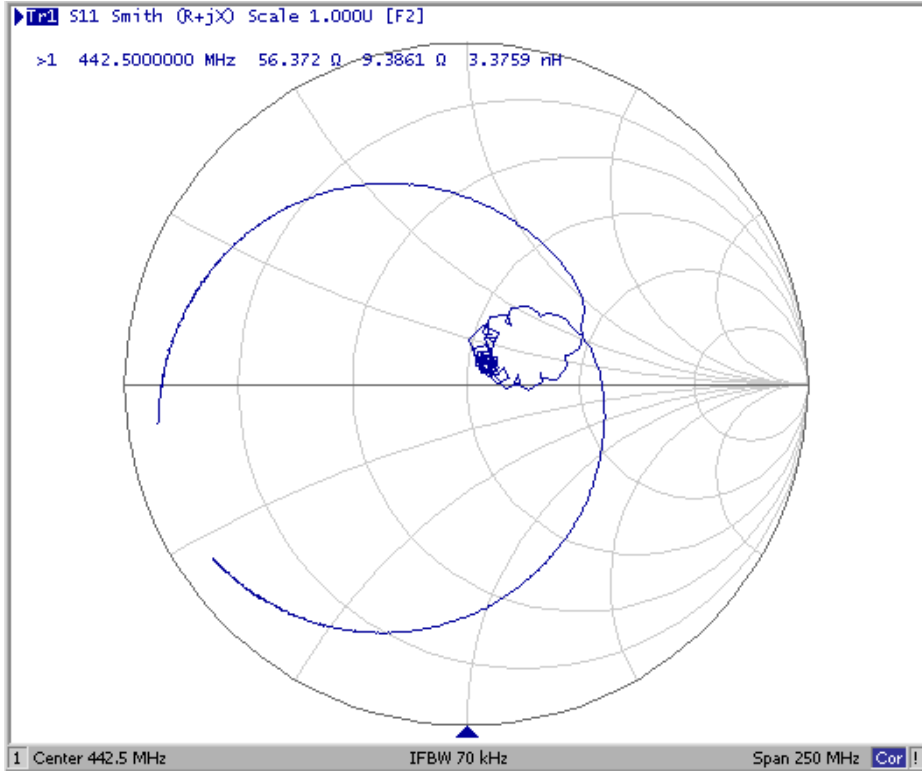
Passband Ripple & Group Delay Ripple: (span30MHz)



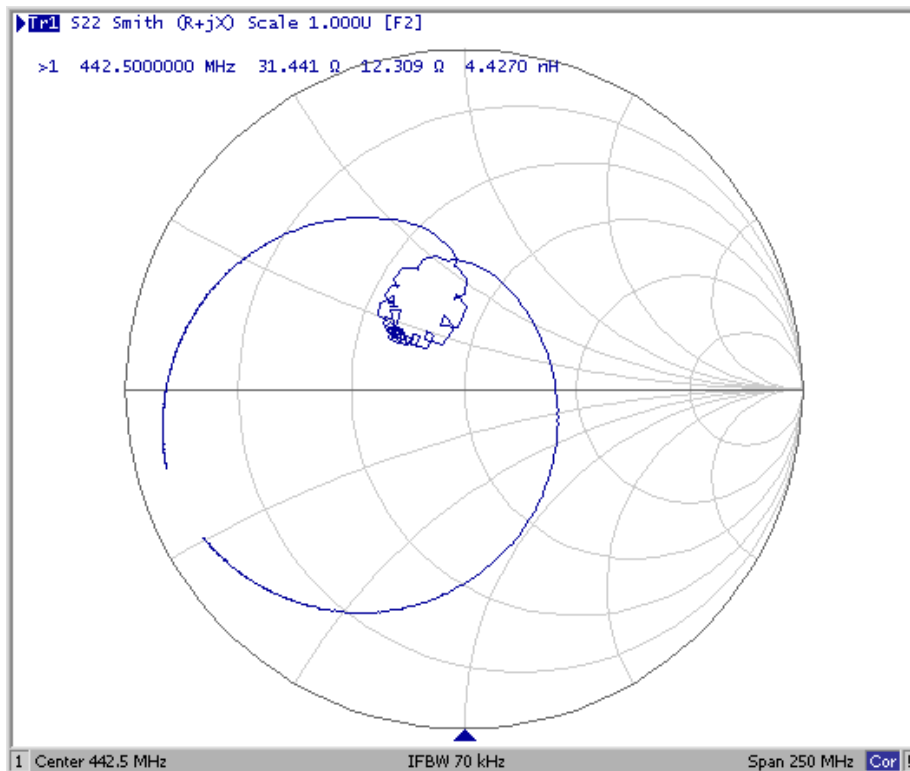
SAW Filter 442.5MHz
Part No: MP02089

Model: TB0658A
REV. NO.: 1

S11 Smith Chart:



S22 Smith Chart:



Tel: +44 1460 256 100
Fax: +44 1460 256 101
www.golledge.com



Golledge Electronics Ltd
Eaglewood Park, ILMINSTER
Somerset, TA19 9DQ, UK

SAW Filter 442.5MHz

Model: TB0658A

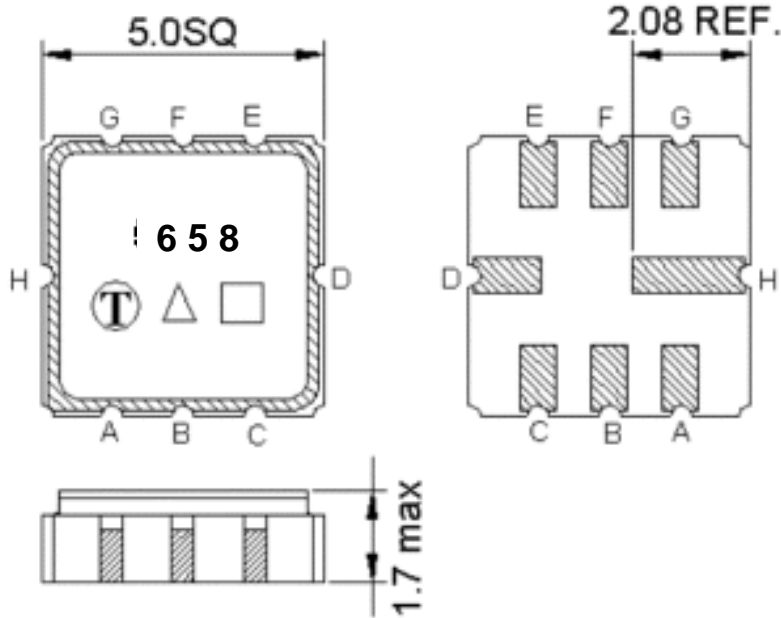
Part No: MP02089

REV. NO.: 1

SAW Filter 442.5MHz
Part No: MP02089

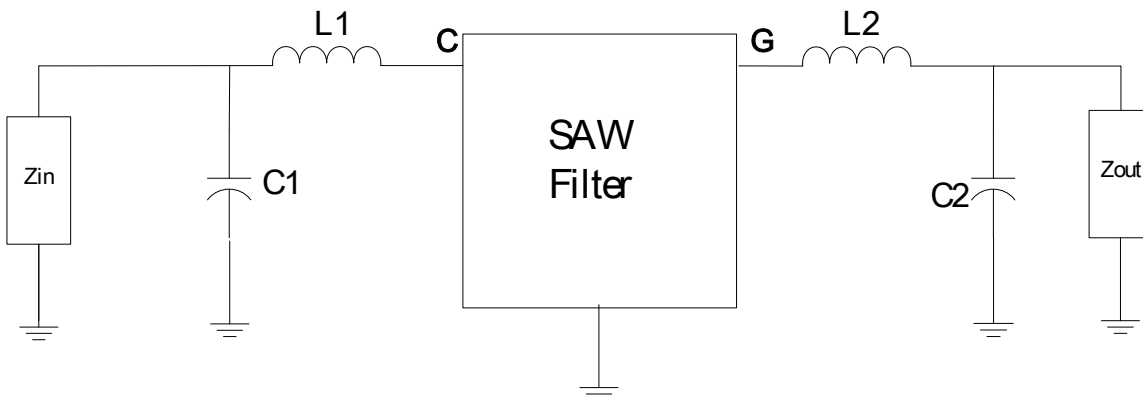
Model: TB0658A
REV. NO.: 1

D. OUTLINE DRAWING:



- Pin C: RF input
- Pin G: RF output
- Pin H,D: Case Ground
- Pin A, B, E, F: Ground

E. MATCHING CIRCUIT:



Zin=Zout=50ohm
 L1=15nH, C1=12pF, L2=15nH, C2=15pF

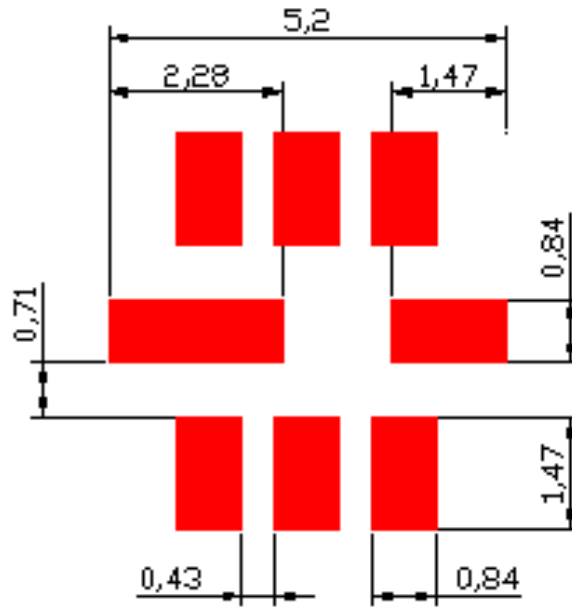
SAW Filter 442.5MHz

Model: TB0658A

Part No: MP02089

REV. NO.: 1

F. PCB FOOTPRINT:



SAW Filter 442.5MHz

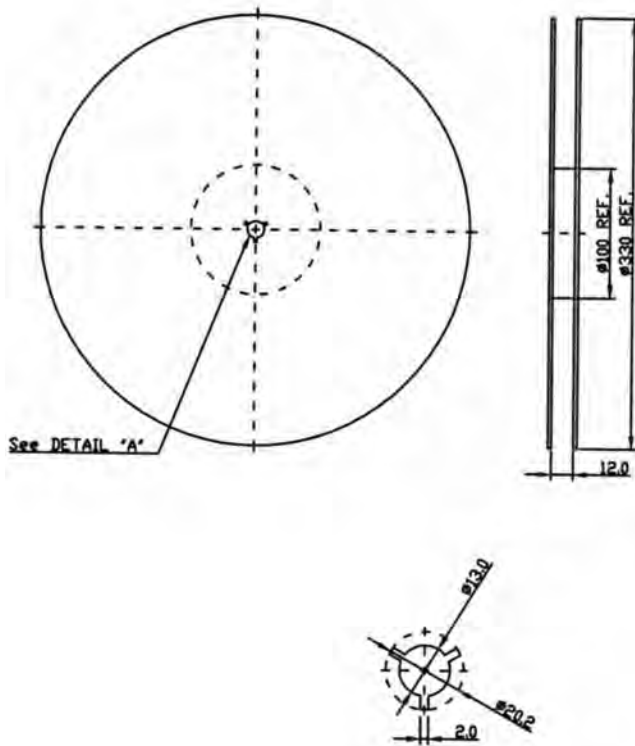
Model: TB0658A

Part No: MP02089

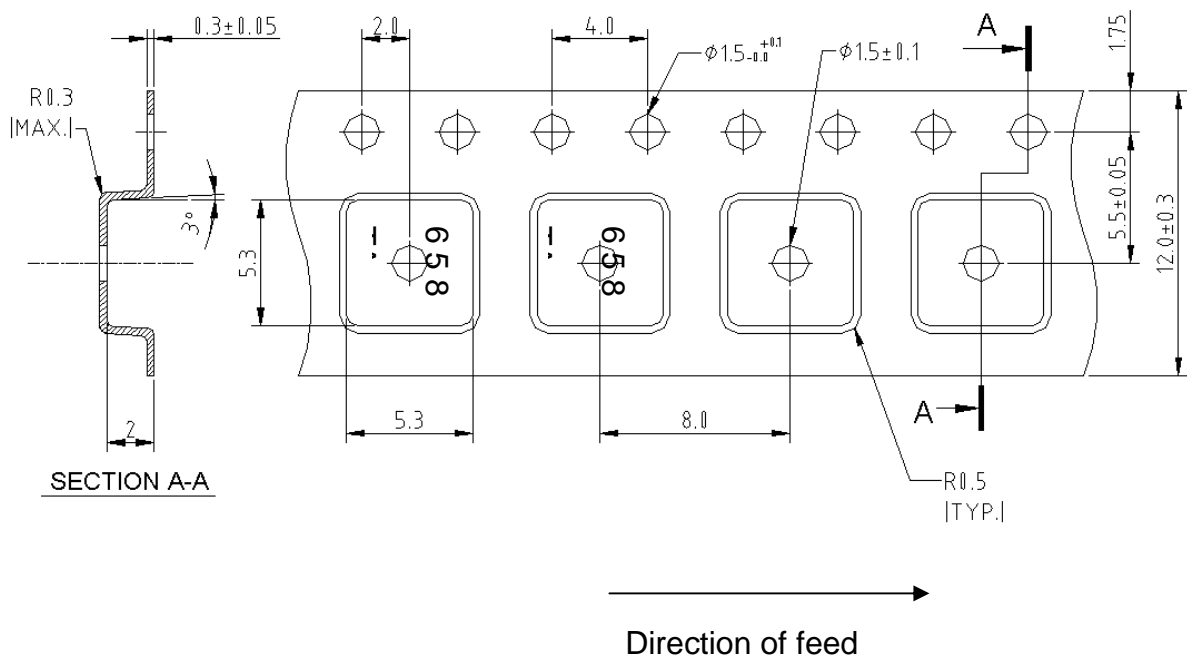
REV. NO.: 1

G. PACKING:

1. REEL DIMENSION



2. TAPE DIMENSION



SAW Filter 442.5MHz

Model: TB0658A

Part No: MP02089

REV. NO.: 1

H. RECOMMENDED REFLOW PROFILE:

