

**SAW Filter 119.64MHz**

**Model: TB0777A**

**Part No: MP02129**

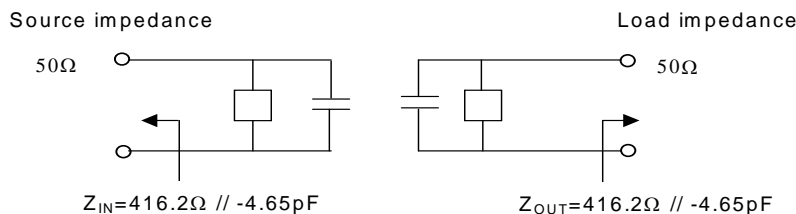
**REV NO.: 1**

**A. MAXIMUM RATING:**

1. Input Power Level: 10 dBm
2. DC voltage : 3 V
3. Operating Temperature: -40°C to +85°C
4. Storage Temperature: -40°C to +85°C

**B. ELECTRICAL CHARACTERISTICS:**

Item	Unit	Min.	Typ.	Max.	Note
Center frequency, Fc	MHz	-	119.64	-	-
Minimum Insertion Loss, IL	dB	-	4	5.5	-
3 dB bandwidth (from Fc)	KHz	5	55	-	-
Group delay ripple in Fc±2.5KHz, GD	µs	-	5	10	-
Attenuation:(Ref level from min IL)					
Fc - 2.5 to Fc + 2.5 KHz	dB	-	1.2	3.0	-
Fc ± 80 to Fc ± 120 KHz	dB	13	23	-	-
Fc ± 120 to Fc ± 240 KHz	dB	43	50	-	-
Fc ± 240 to Fc ± 330 KHz	dB	45	55	-	-
Fc ± 330 to Fc ± 480 KHz	dB	45	55	-	-
Fc ± 480 to Fc ± 660 KHz	dB	45	55	-	-
Temperature coefficient of frequency TCf		-0.033 ppm/C <sup>2</sup>			



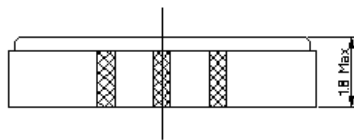
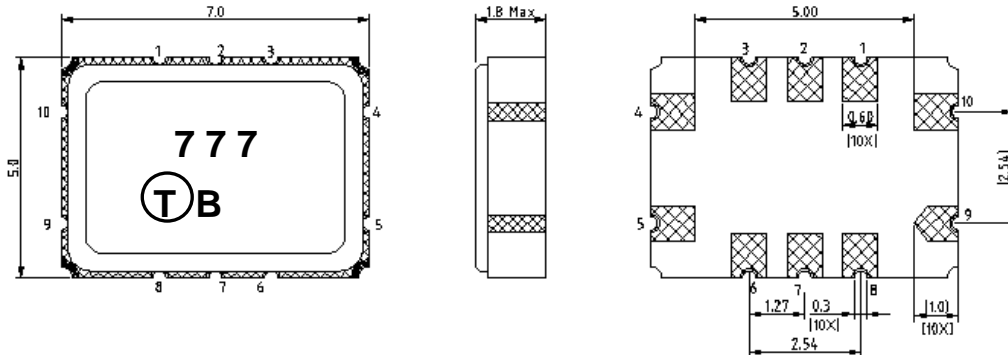
**SAW Filter 119.64MHz**

**Model: TB0777A**

**Part No: MP02129**

**REV NO.: 1**

**C. OUTLINE DRAWING:**

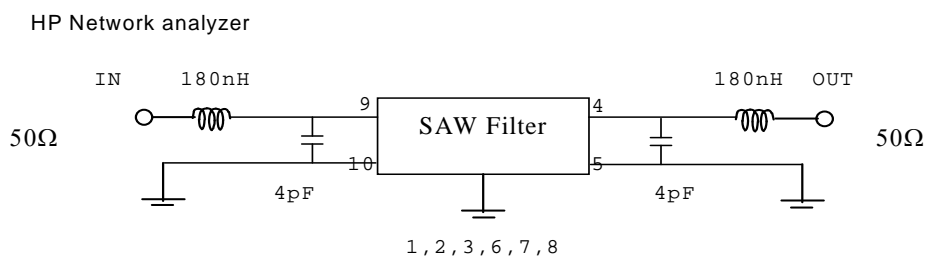


**Pin configuration**

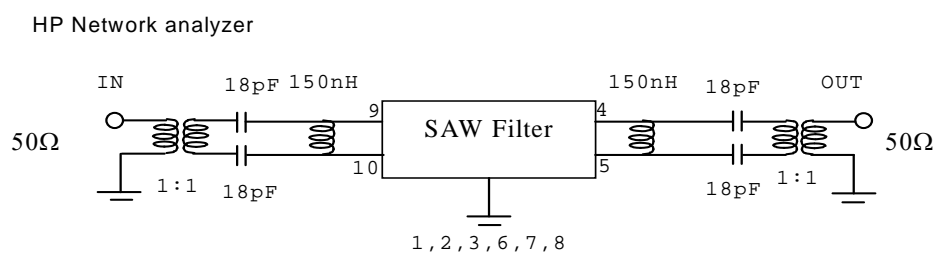
- #9 Input
  - #4 Output
  - #10 Balance input or input ground
  - #5 Balance output or output ground
  - #1,2,3,6,7,8 To be grounded
- Unit mm

**D. MEASUREMENT CIRCUIT:**

**50 Ohm Test circuit 1 ( single-ended / single-ended )**



**50 Ohm Test circuit 2 ( balance / balance )**



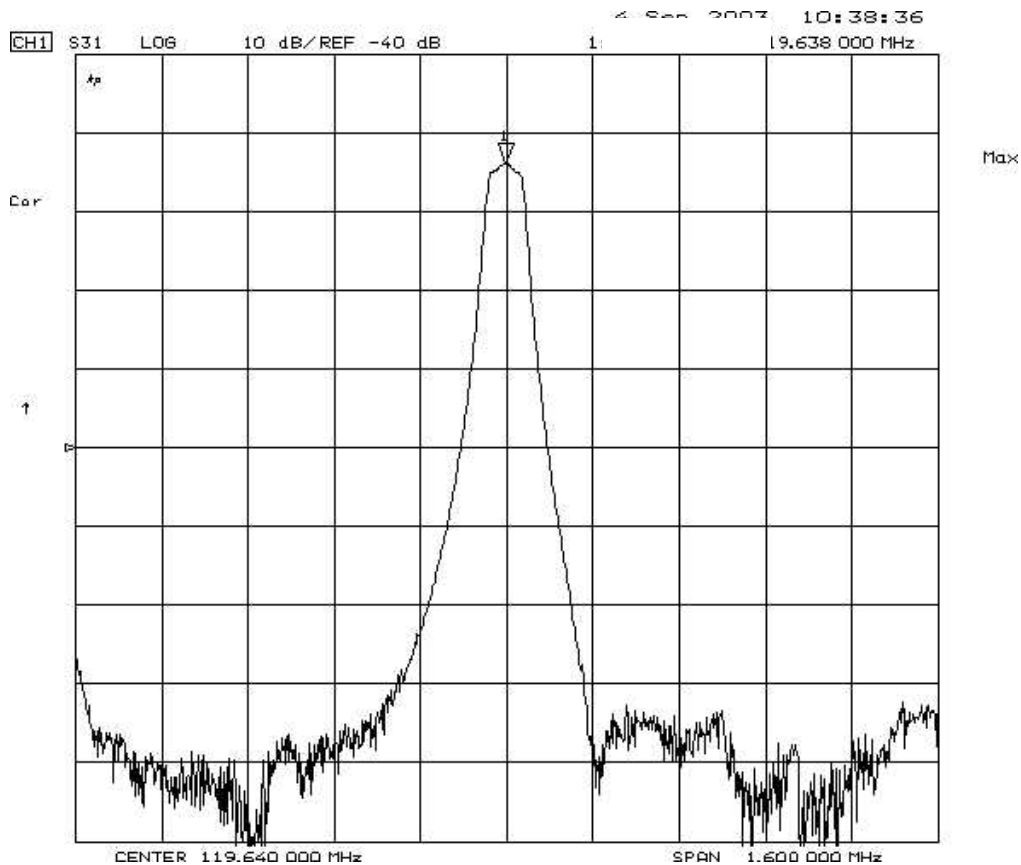
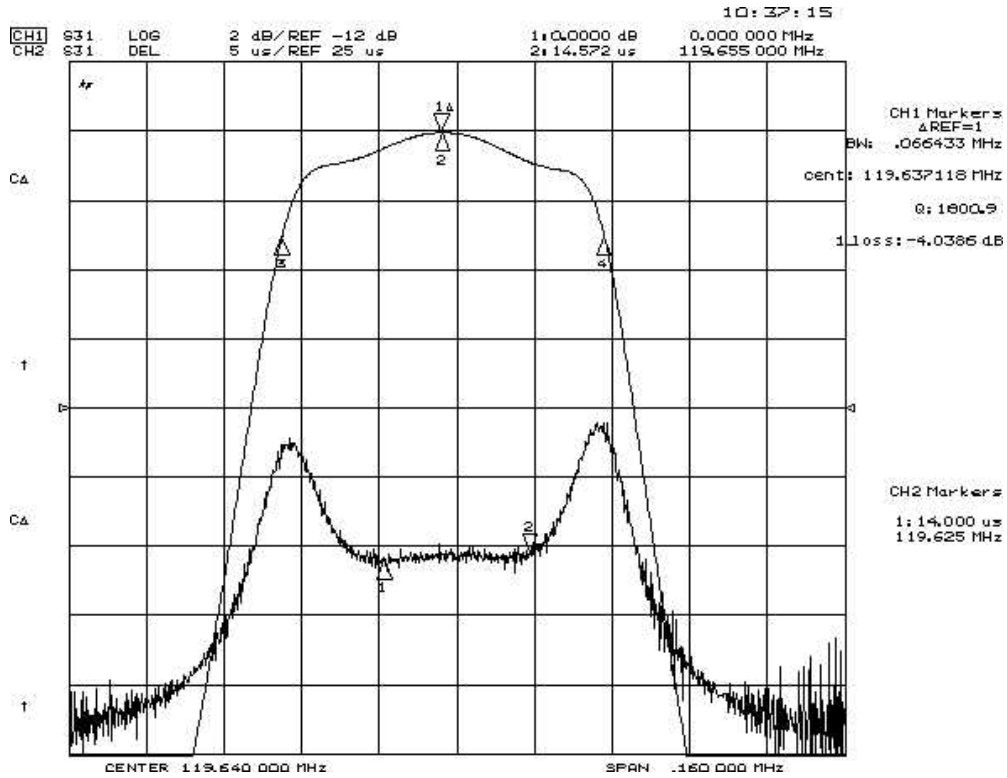
**SAW Filter 119.64MHz**

**Model: TB0777A**

**Part No: MP02129**

**REV NO.: 1**

**E. FREQUENCY CHARACTERISTICS:**



**SAW Filter 119.64MHz**

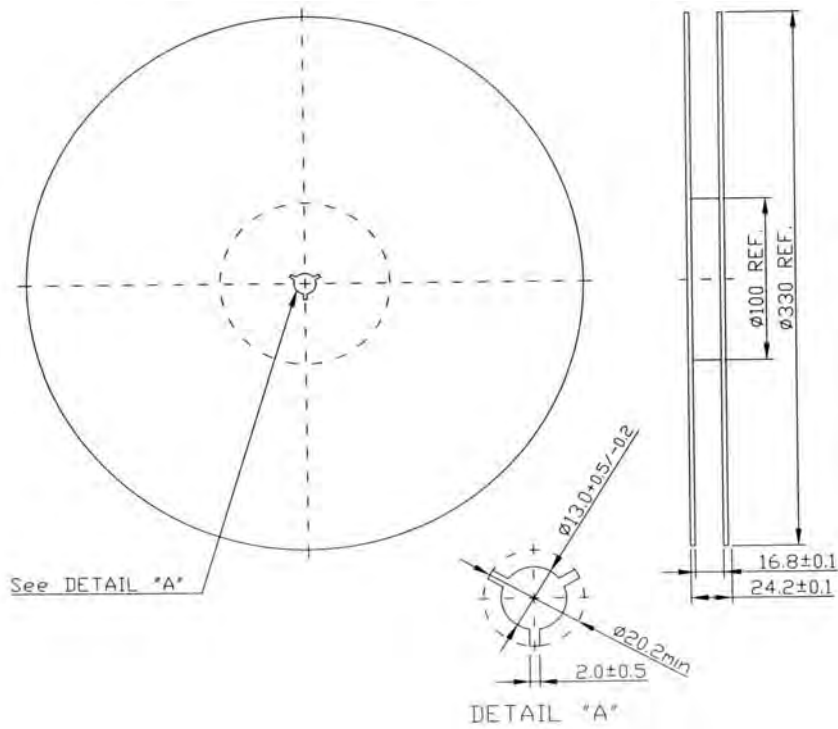
**Model: TB0777A**

**Part No: MP02129**

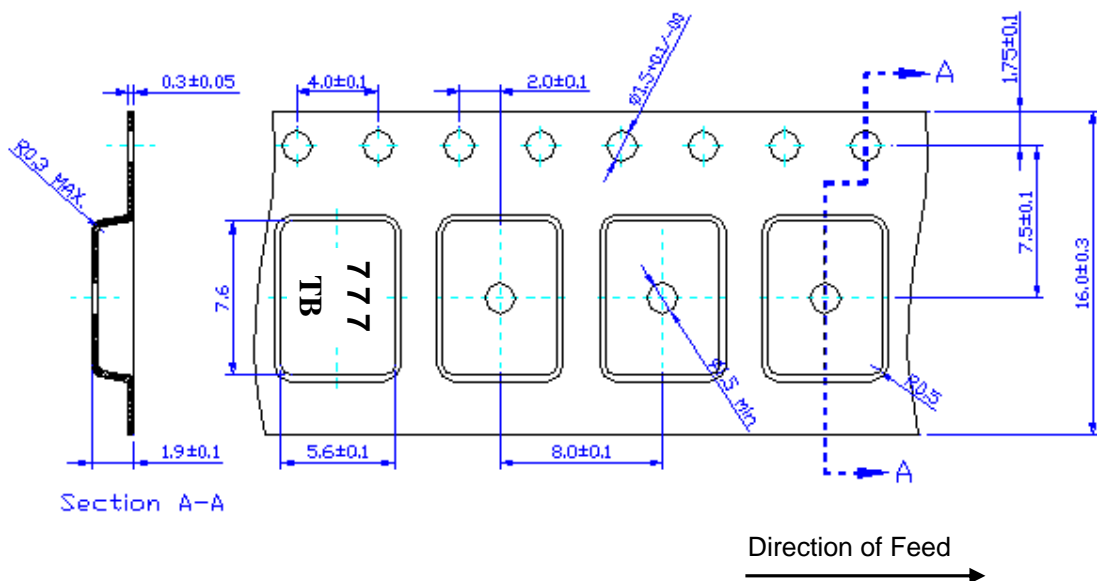
**REV NO.: 1**

**F. PACKING:**

**1. REEL DIMENSION**



**2.TAPE DIMENSION**



**SAW Filter 119.64MHz**

**Model: TB0777A**

**Part No: MP02129**

**REV NO.: 1**

**G. RECOMMENDED REFLOW PROFILE :**

