

SAW Filter 748MHz

Model: TA1005A

Part No: MP02166

REV NO.: 1

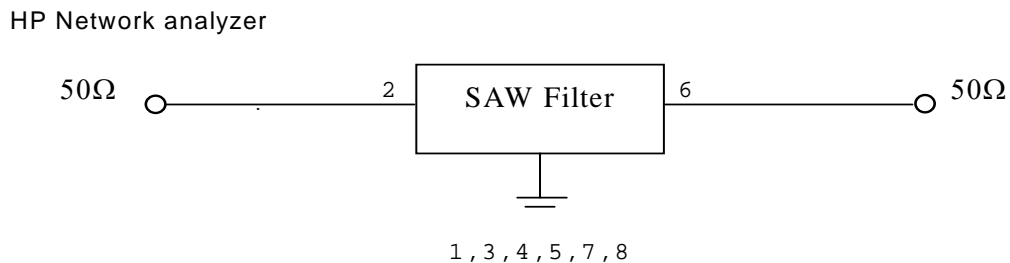
A. MAXIMUM RATING:

1. Input Power Level: 10 dBm
2. DC Voltage : 3V
3. Operating Temperature: -20°C to +75°C
4. Storage Temperature: -40°C to +85°C

B. ELECTRICAL CHARACTERISTICS:

Item	Unit	Min.	Typ.	Max.
Center frequency Fc	MHz	-	748	-
Insertion loss (732~764 MHz) IL	dB	-	3.0	4.5
Amplitude Ripple (732~764 MHz)	dB	-	1.3	3.0
Attenuation (Reference level from 0 dB)				
0 ~ 700 MHz	dB	45	53	-
700 ~ 708 MHz	dB	40	54	-
708 ~ 720 MHz	dB	20	31	-
790 ~ 820 MHz	dB	20	39	-
820 ~ 1000 MHz	dB	45	52	-
Temperature Coefficient of Frequency	ppm/°C	-	-35	-

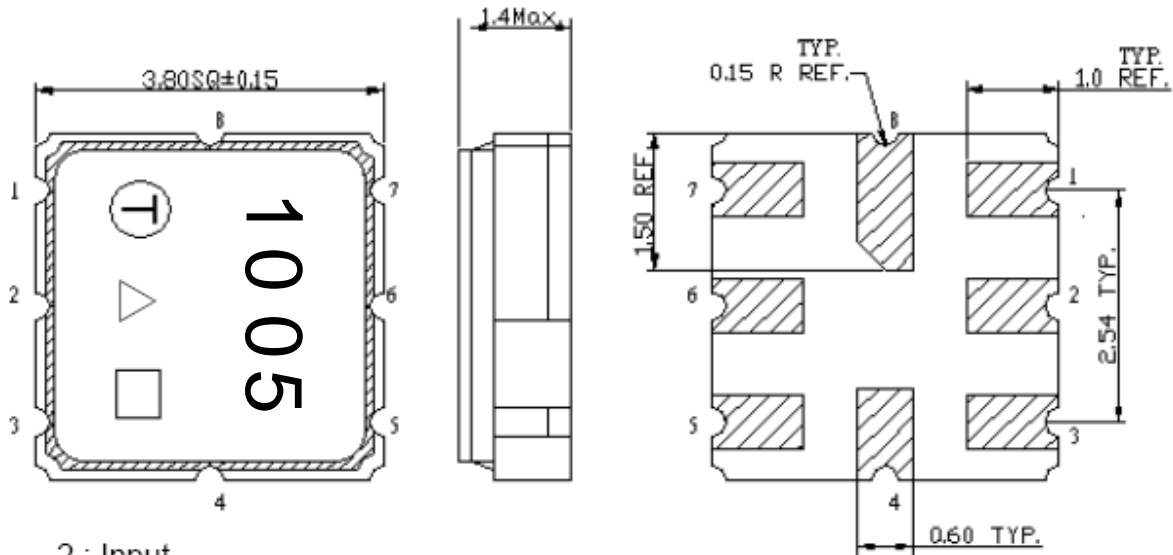
C. MEASUREMENT CIRCUIT:



SAW Filter 748MHz
Part No: MP02166

Model: TA1005A
REV NO.: 1

D. OUTLINE DRAWING:

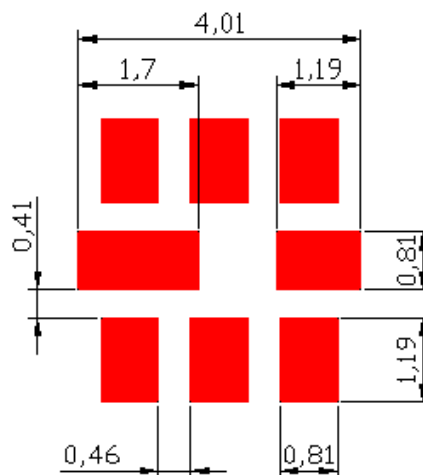


- 2 : Input
- 6: Output
- 1,3,4,5,7,8: Ground
- △ : Year Code
- : Date Code (W01->A, W02->B, ..., W52->z)

△ Product Year Code

Year	2007	2008
	2009	2010
	2011	2012
Product Code	A	a

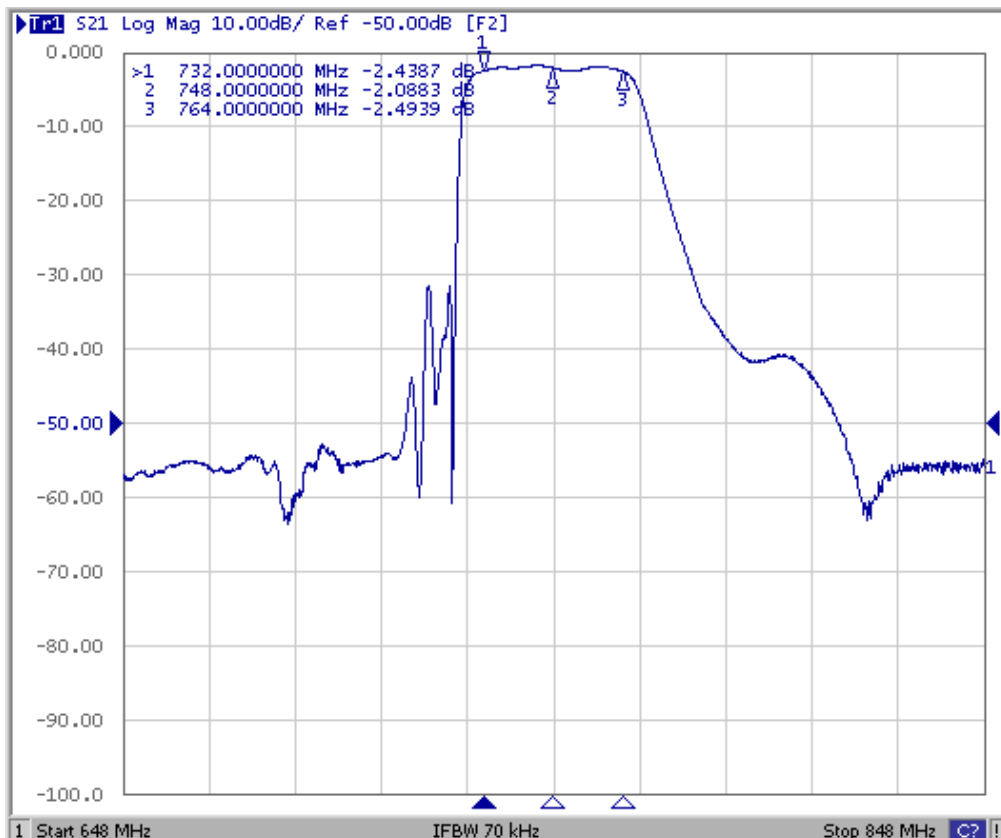
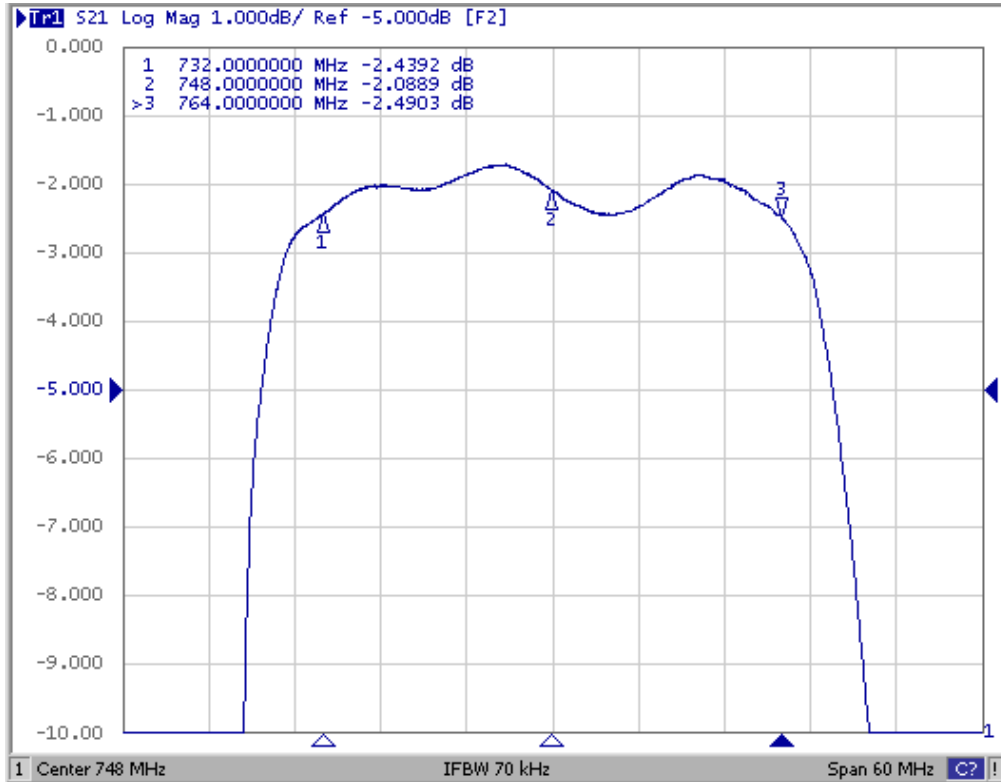
E. PCB FOOTPRINT:



SAW Filter 748MHz
Part No: MP02166

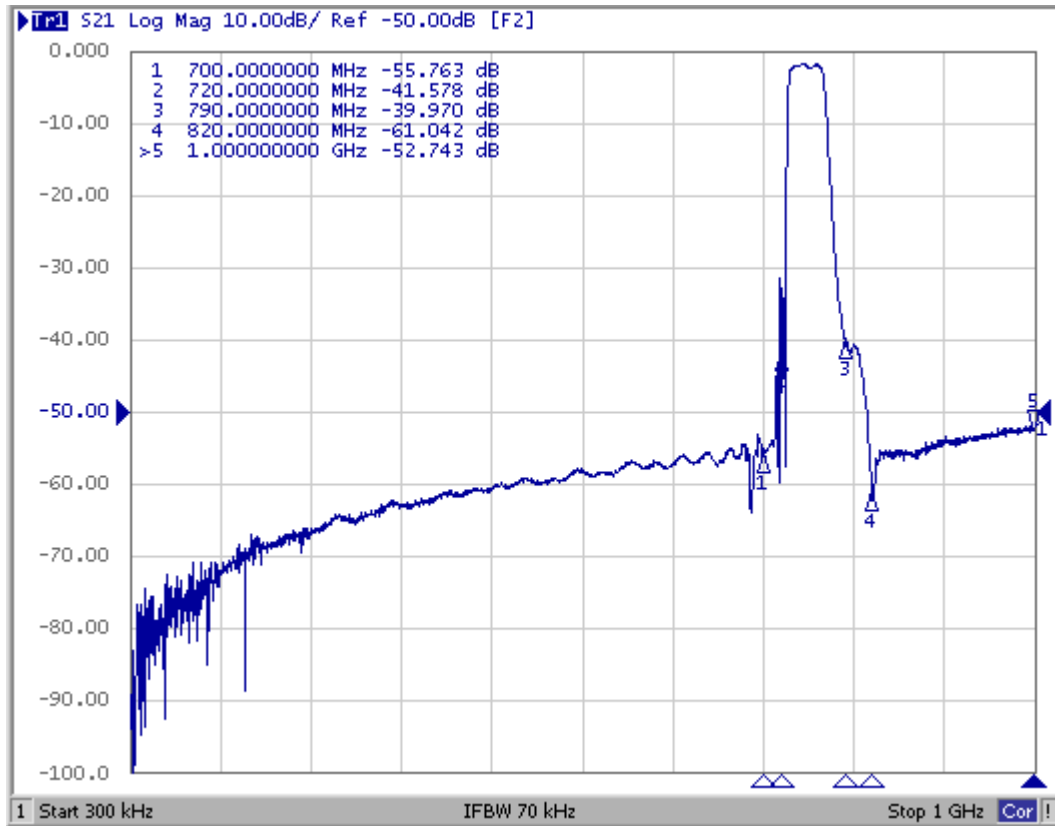
Model: TA1005A
REV NO.: 1

F. FREQUENCY CHARACTERISTICS:



SAW Filter 748MHz
Part No: MP02166

Model: TA1005A
REV NO.: 1



SAW Filter 748MHz

Model: TA1005A

Part No: MP02166

REV NO.: 1

H. RECOMMENDED REFLOW PROFILE :

