

SAW Filter 1440.0MHz

Model: TA0930A

Part No: MP02196

Rev No: 1

A. MAXIMUM RATING:

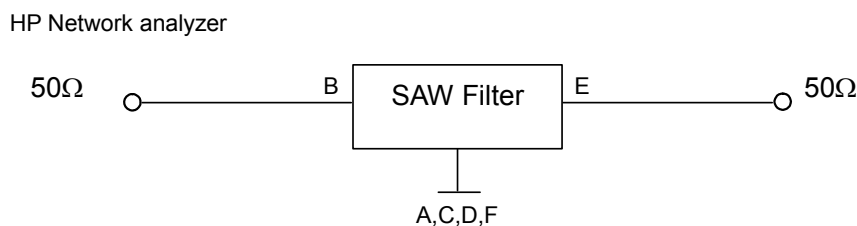
1. Input Power Level: 10dBm
2. DC voltage: 5V
3. Operating Temperature: -25°C to 85°C
4. Storage Temperature: -40°C to +85°C

B. CHARACTERISTICS:

Item	Unit	Min.	Typ.	Max.
Center Frequency Fc	MHz	-	1440	-
Insertion Loss 1439 ~ 1441MHz	dB	-	2.9	4.6
Amplitude ripple (p-p) Fc ± 1MHz	dB		0.7	2.0
Rejection (referent to IL)				
Fc -120MHz	dB	30	45	-
Fc +120MHz	dB	30	45	-

Note: No matching network required for operation at 50Ω

C. MEASUREMENT CIRCUIT:

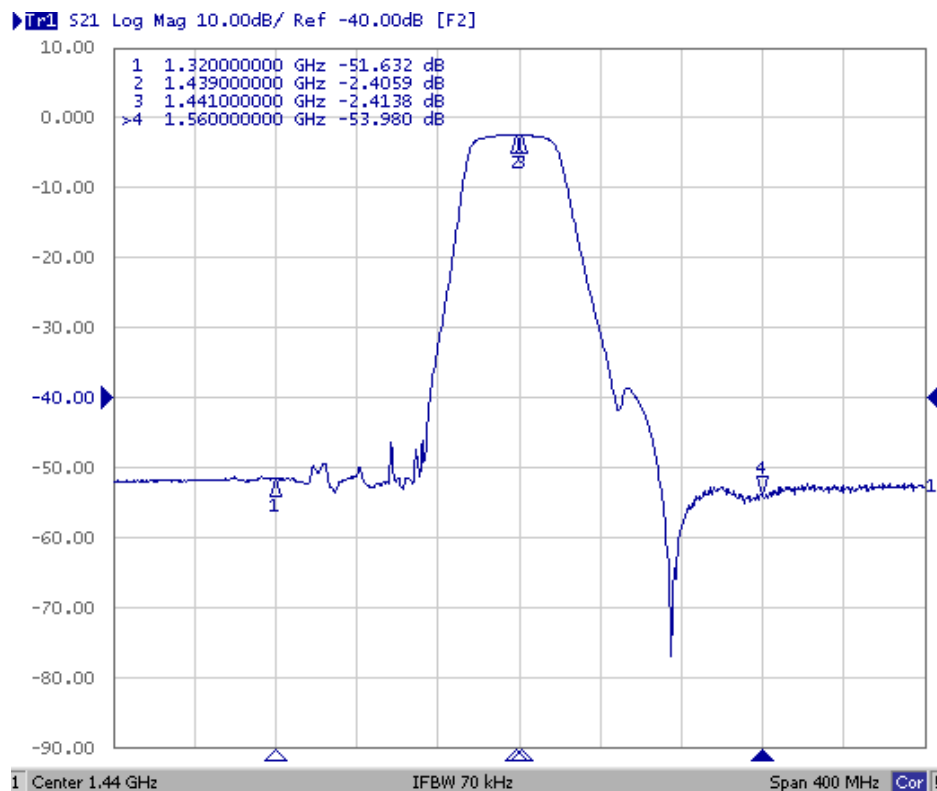
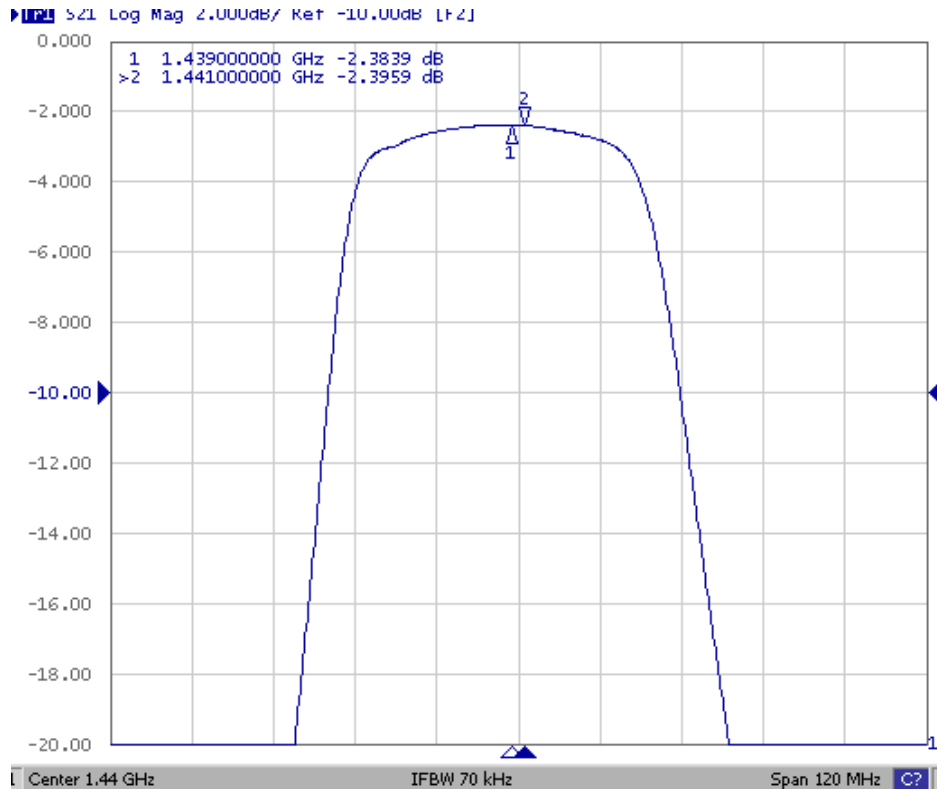


SAW Filter 1440.0MHz
Part No: MP02196

Model: TA0930A
Rev No: 1

D. FREQUENCY CHARACTERISTICS:

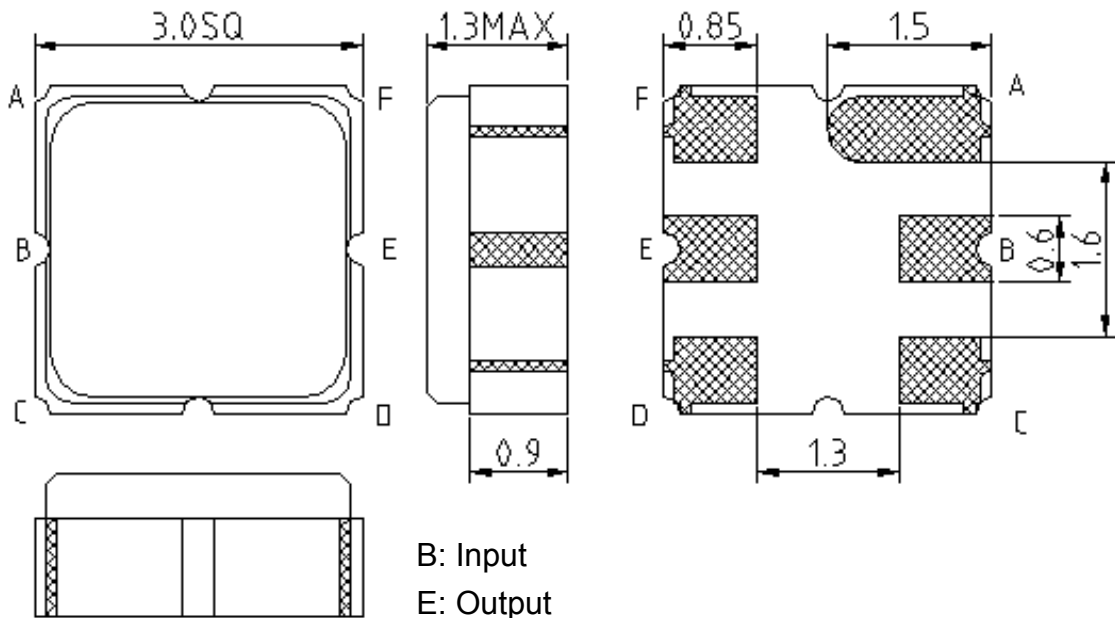
Transfer Function



SAW Filter 1440.0MHz
Part No: MP02196

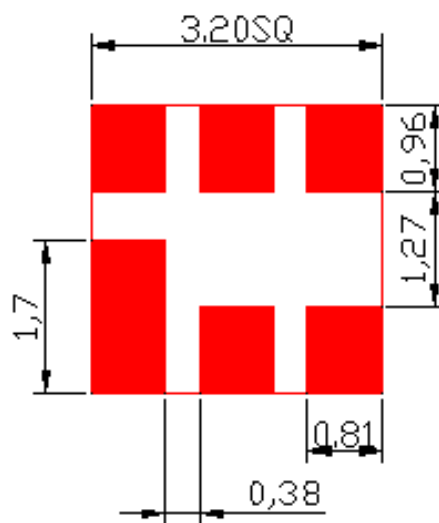
Model: TA0930A
Rev No: 1

E. OUTLINE DRAWING:



B: Input
E: Output
A, C, D, F: Ground
Unit: mm

F. PCB FOOTPRINT:

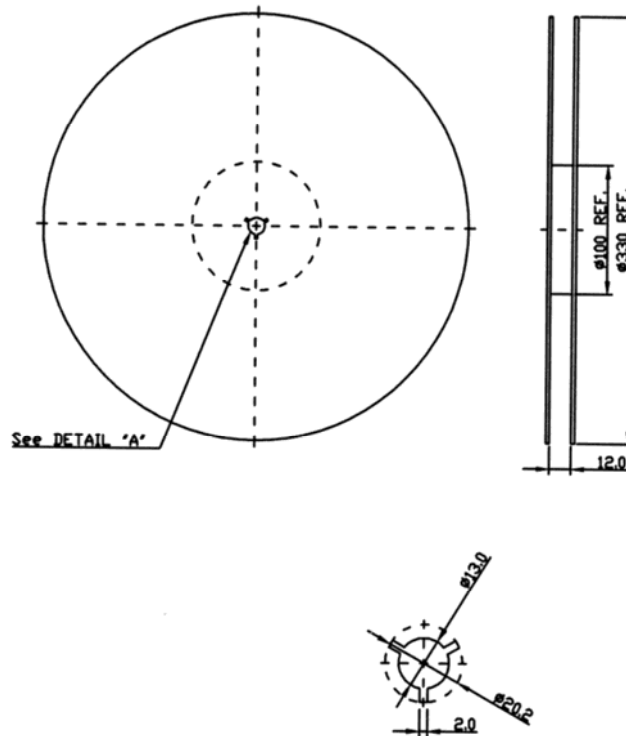


SAW Filter 1440.0MHz
Part No: MP02196

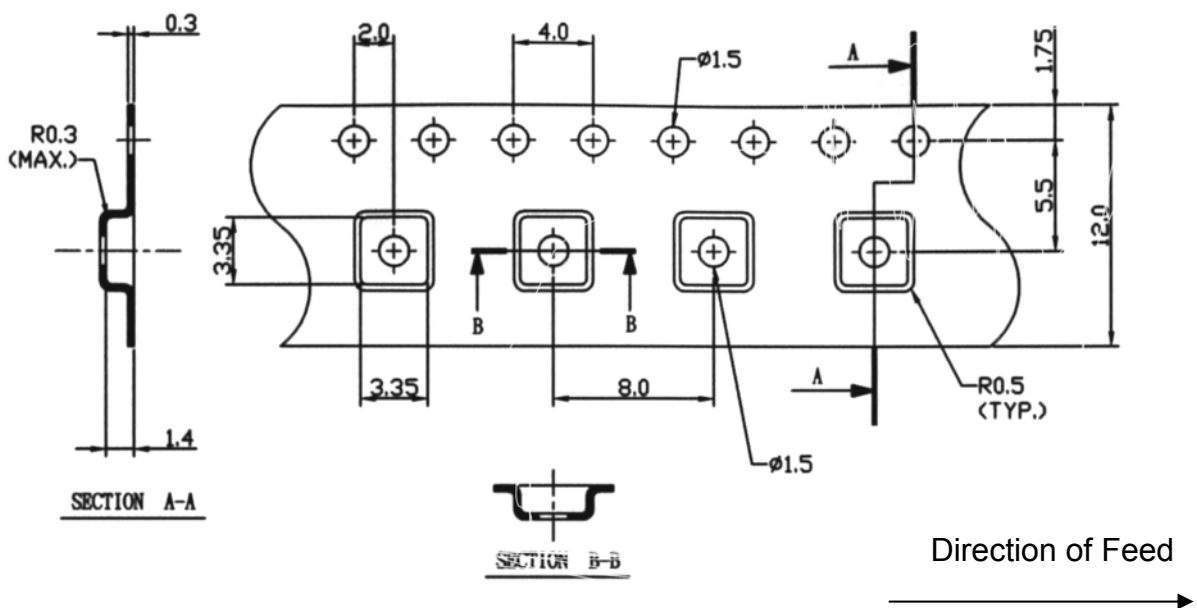
Model: TA0930A
Rev No: 1

G. PACKING:

1. Reel Dimension



2. Tape Dimension



SAW Filter 1440.0MHz
Part No: MP02196

Model: TA0930A
Rev No: 1

H. RECOMMENDED REFLOW PROFILE:

