
SAW Filter 1120MHz**Model: TA0974A****Part No: MP02382****REV NO.: 1**

A. MAXIMUM RATING:

1. Input Power Level: 10 dBm
2. DC Voltage : 3V
3. Operating Temperature: -40°C to +85°C
4. Storage Temperature: -40°C to +85°C

B. ELECTRICAL CHARACTERISTICS:Terminating source impedance (balanced) : $Z_s = 200\Omega$ Terminating load impedance (balanced) : $Z_L = 200\Omega$

Item	Unit	Min.	Typ.	Max.	Note
Center Frequency F_c	MHz	-	1120	-	-
Insertion Loss ($F_c \pm 4$ MHz) IL	dB	-	2.8	5	-
Amplitude ripple ($F_c \pm 4$ MHz)	dB	-	0.5	1.5	-
Bandwidth BW_{-3dB}	MHz	19	21	-	-
Attenuation (Reference level from 0dB)					
500 ~ $F_c - 85$ MHz	dB	50	62	-	-
$F_c - 76$ ~ $F_c - 68$ MHz	dB	50	61	-	-
$F_c - 44$ MHz	dB	50	59	-	-
$F_c - 36$ MHz	dB	48	54	-	-
$F_c + 70$ ~ 2000 MHz	dB	50	57	-	-

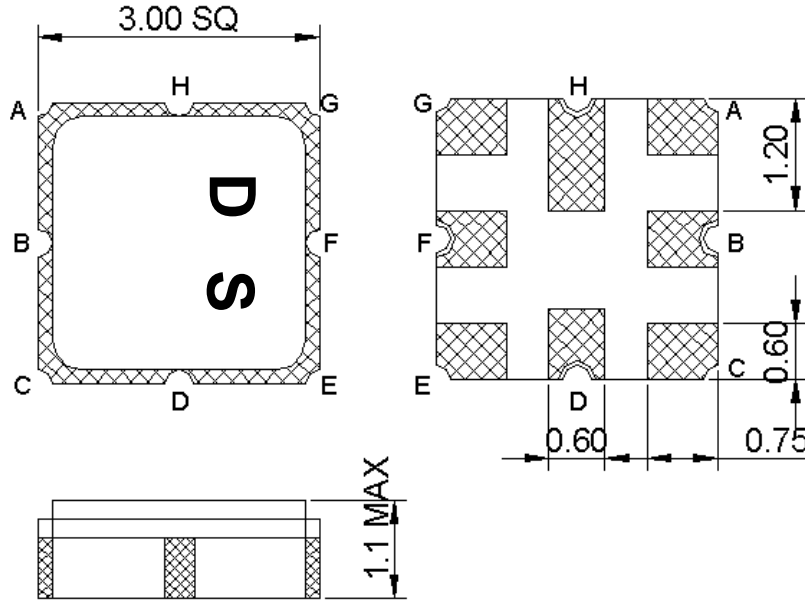
SAW Filter 1120MHz

Model: TA0974A

Part No: MP02382

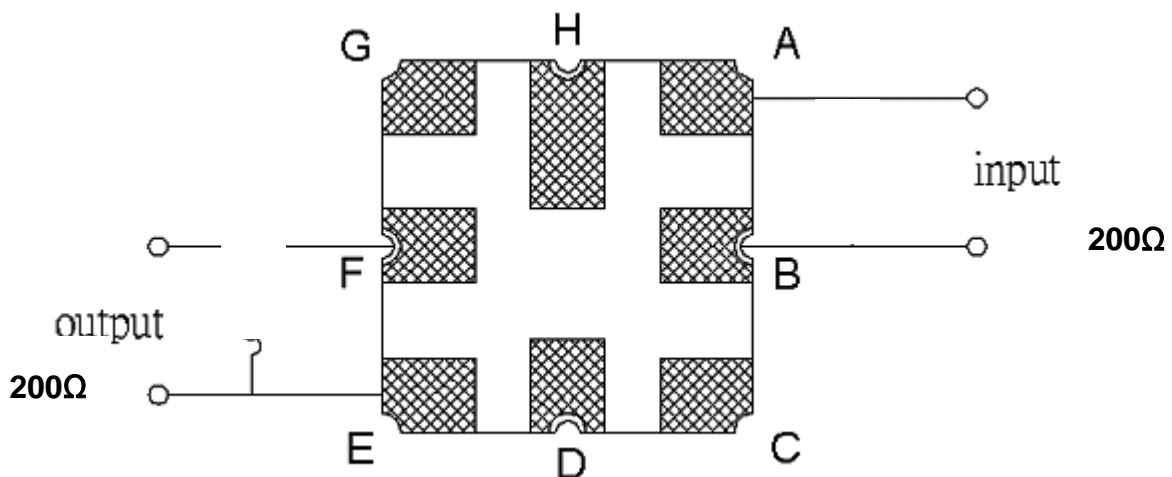
REV NO.: 1

C. OUTLINE DRAWING:



A, B : Balanced Input
 E, F : Balanced Output
 C,D,G,H : Ground
 Unit : mm

D. MEASUREMENT CIRCUIT:



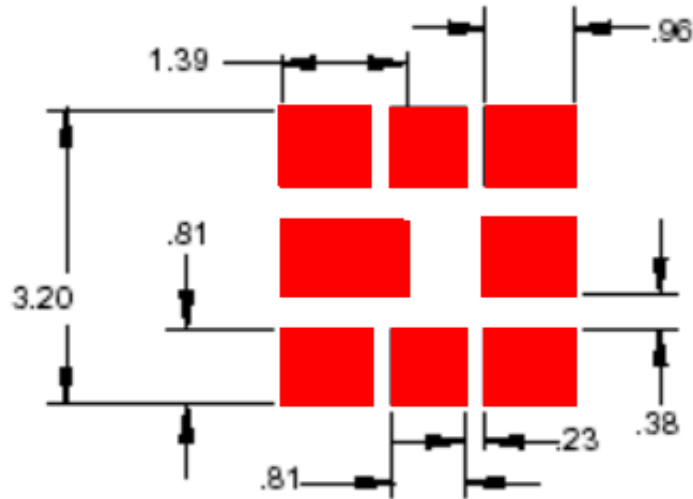
SAW Filter 1120MHz

Model: TA0974A

Part No: MP02382

REV NO.: 1

E. PCB FOOTPRINT:



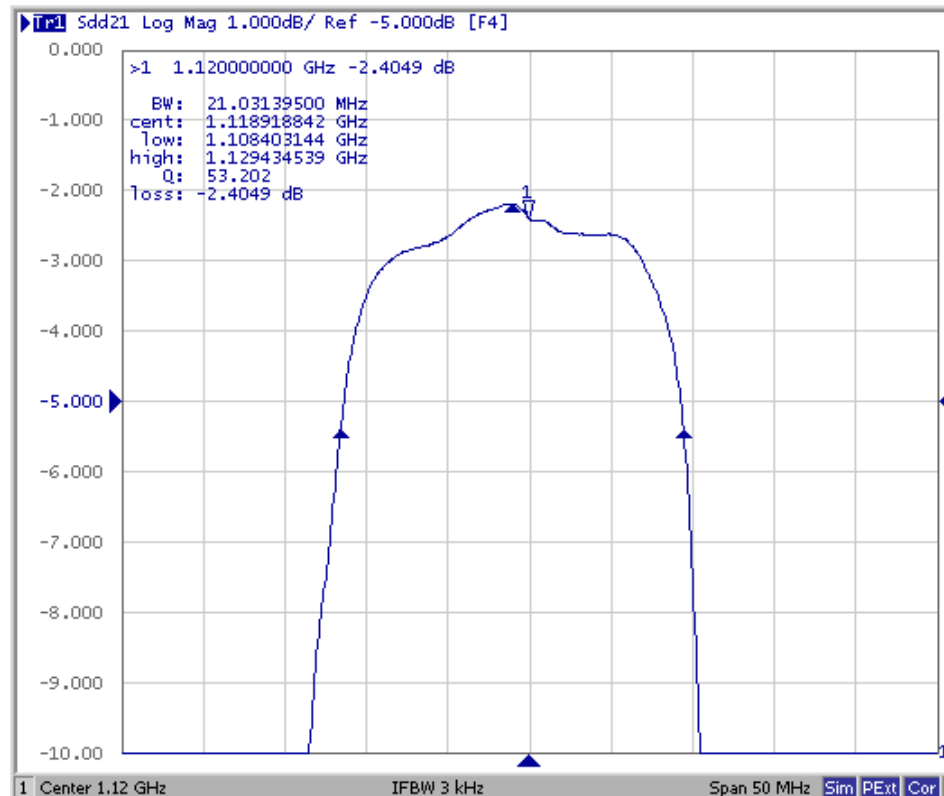
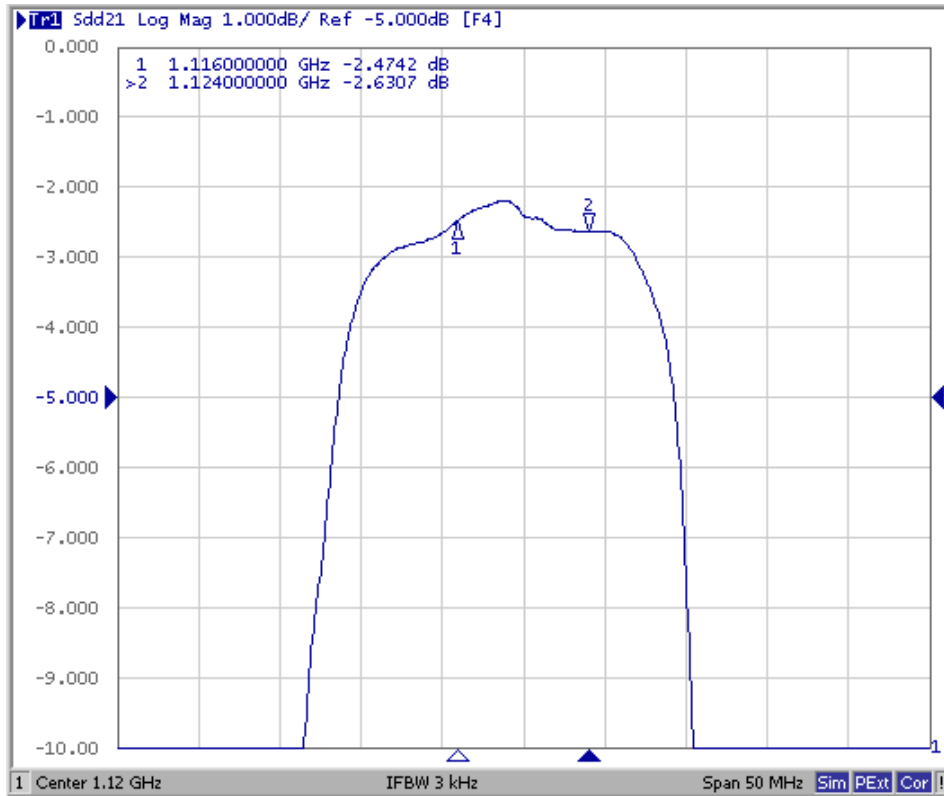
SAW Filter 1120MHz

Model: TA0974A

Part No: MP02382

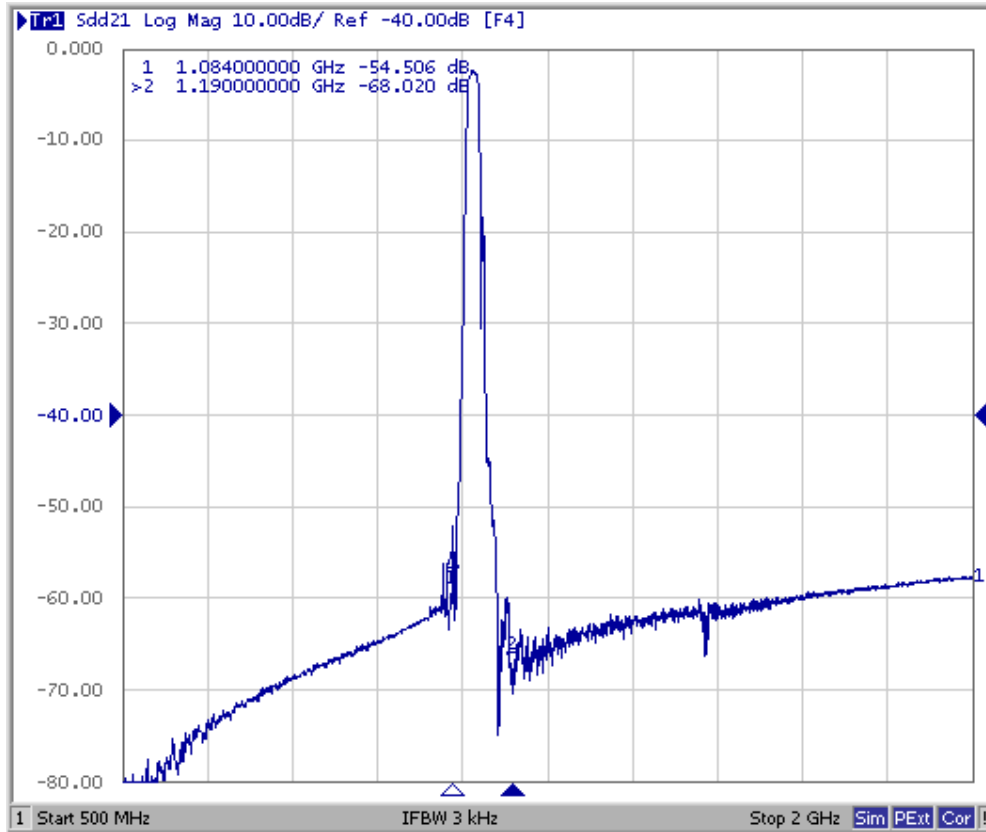
REV NO.: 1

F. FREQUENCY CHARACTERISTICS:



SAW Filter 1120MHz
Part No: MP02382

Model: TA0974A
REV NO.: 1



SAW Filter 1120MHz

Model: TA0974A

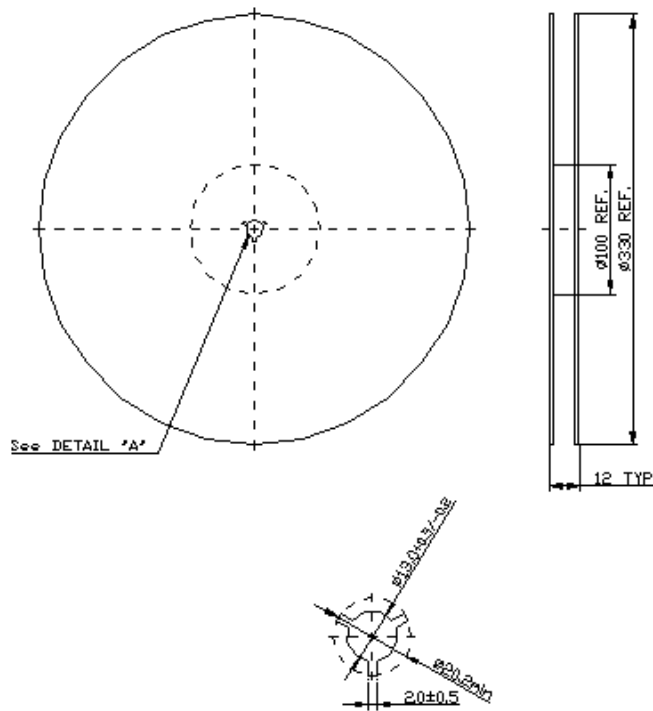
Part No: MP02382

REV NO.: 1

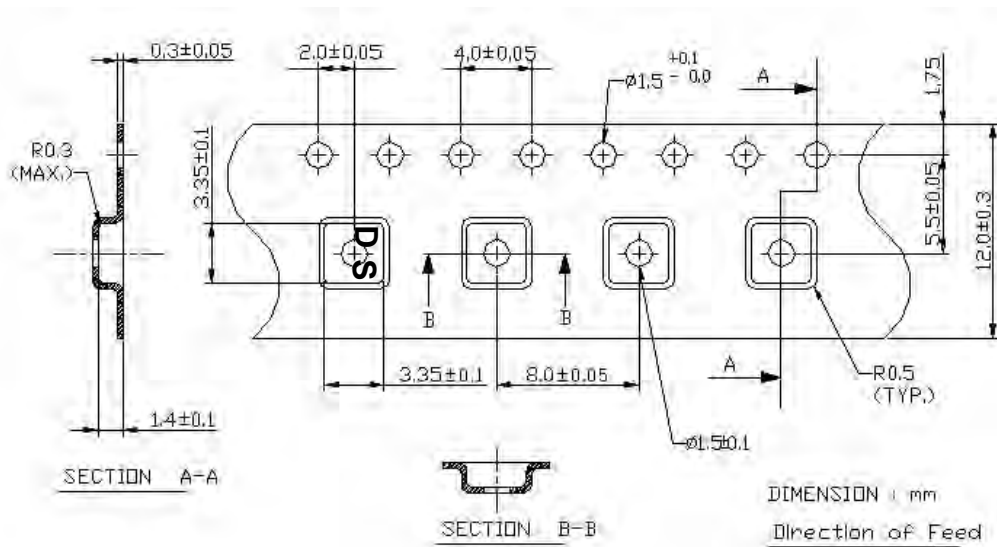
G. PACKING:

1. REEL DIMENSION

(Reel Count : 7"=1000 ; 13"=3000)



2.TAPE DIMENSION



SAW Filter 1120MHz

Model: TA0974A

Part No: MP02382

REV NO.: 1

H. RECOMMENDED REFLOW PROFILE :

