

SAW Filter 427.5MHz
Part No: MP02634

Model: TB0657A
Rev No: 1

A. MAXIMUM RATING:

1. Operating Temperature: -25°C to +70°C
2. Storage Temperature: -40°C to +85°C

B. ELECTRICAL CHARACTERISTICS:

Ambient Temperature: 25°C

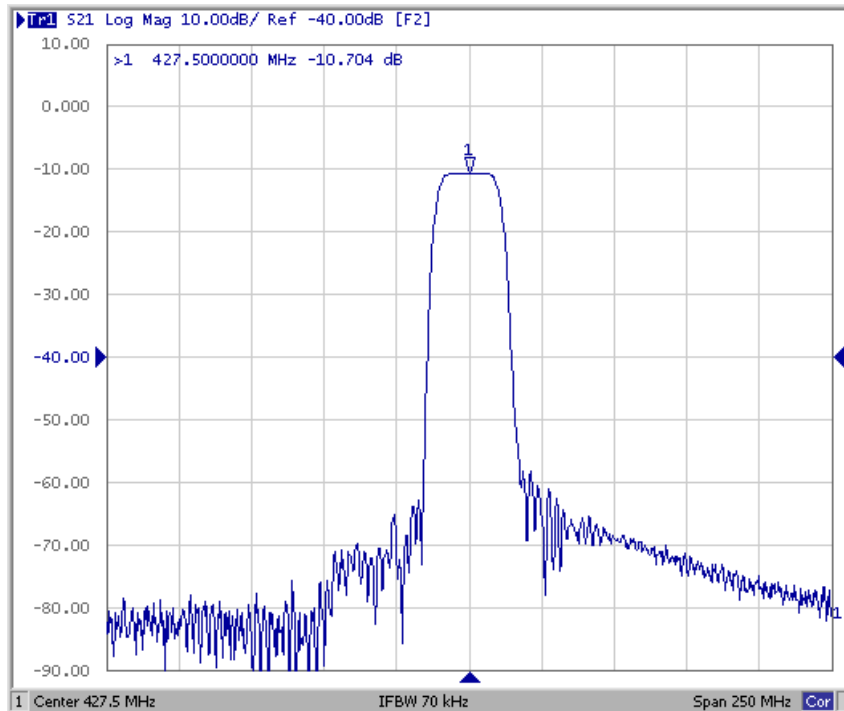
Characteristics	Value			Note
	Min.	Typ.	Max.	
Center frequency Fc MHz	-	427.5	-	-
Minimum Insertion loss IL dB	-	10.5	13.0	-
1dB Bandwidth MHz	15.0	18.2	-	-
3dB Bandwidth MHz	18.0	20.7	-	-
Ripple (420.0 ~ 435.0MHz) dB	-	0.2	1	-
Group-delay Ripple (420.0 ~ 435.0MHz) nsec	-	12	100	-
Attenuation (Reference level from Min. insertion loss)				
255.0 ~ 390.0MHz dB	35	62	-	-
465.0 ~ 600.0MHz dB	40	57	-	-

SAW Filter 427.5MHz
Part No: MP02634

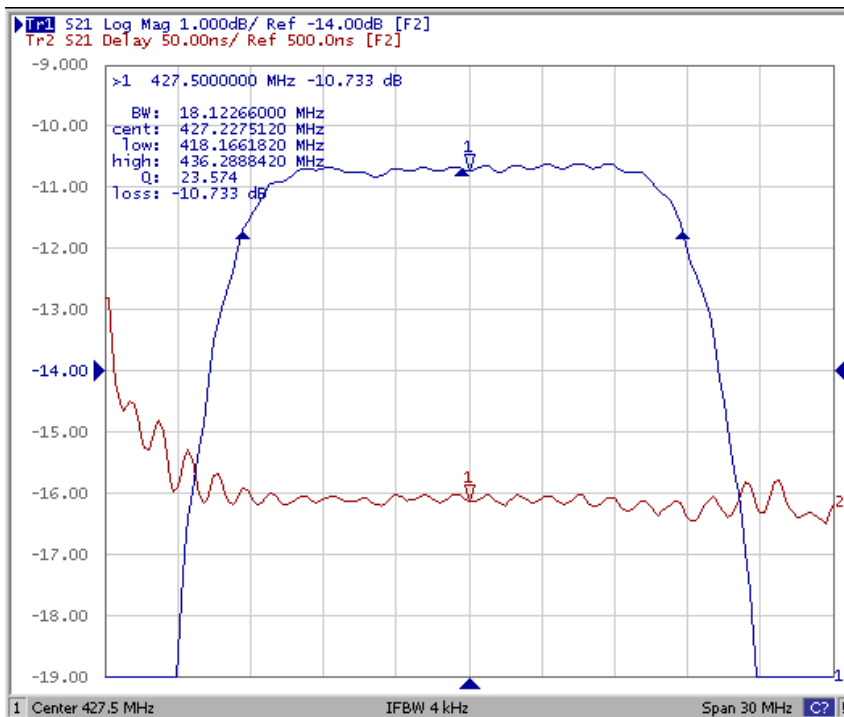
Model: TB0657A
Rev No: 1

C. FREQUENCY CHARACTERISTICS:

S21 Response: (span250MHz)



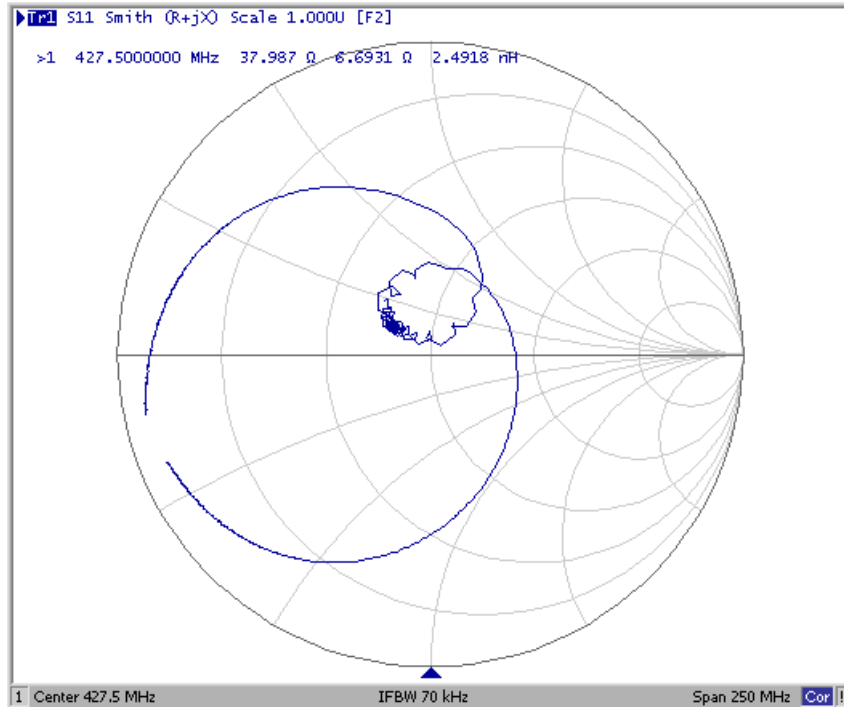
Passband Ripple & Group Delay Ripple: (span30MHz)



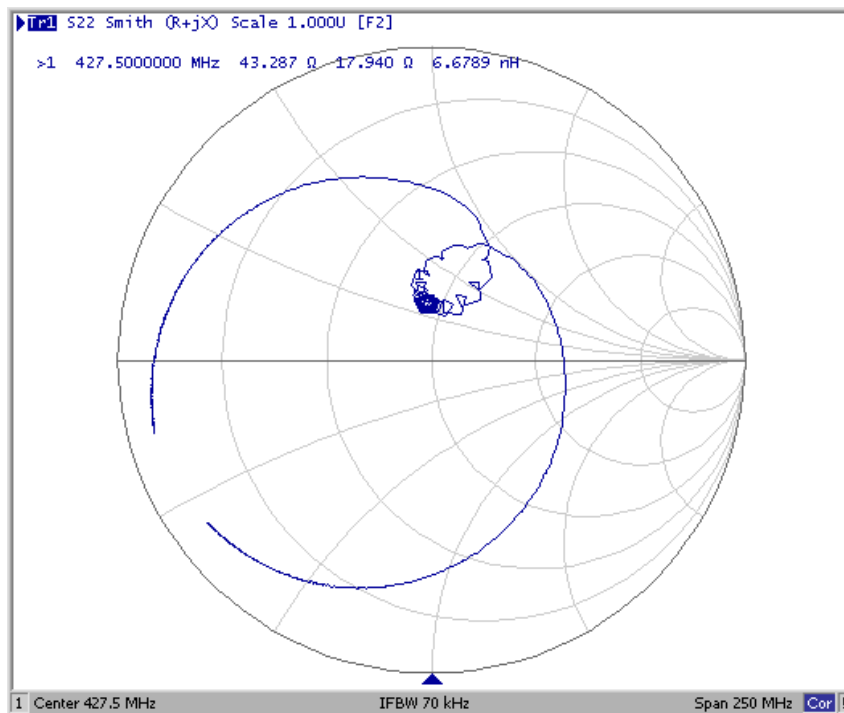
SAW Filter 427.5MHz
Part No: MP02634

Model: TB0657A
Rev No: 1

S11 Smith Chart



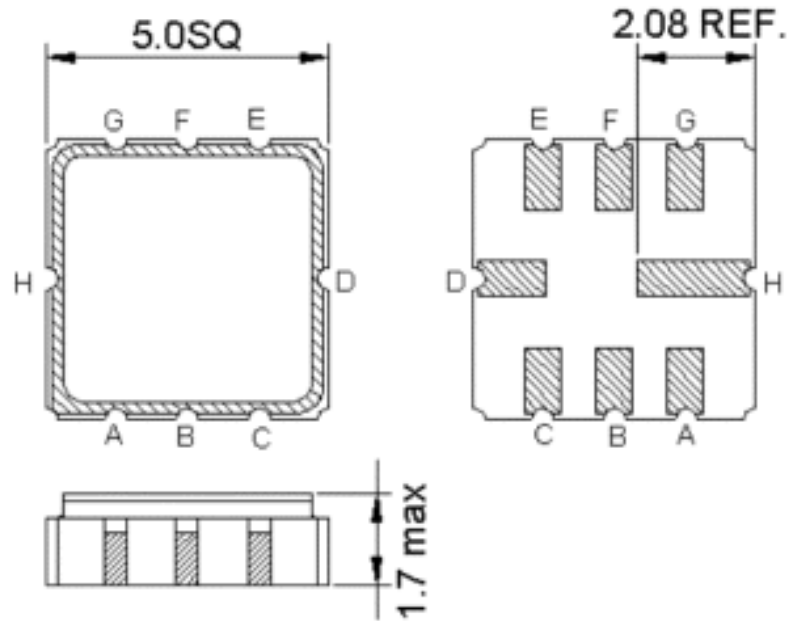
S22 Smith Chart



SAW Filter 427.5MHz
Part No: MP02634

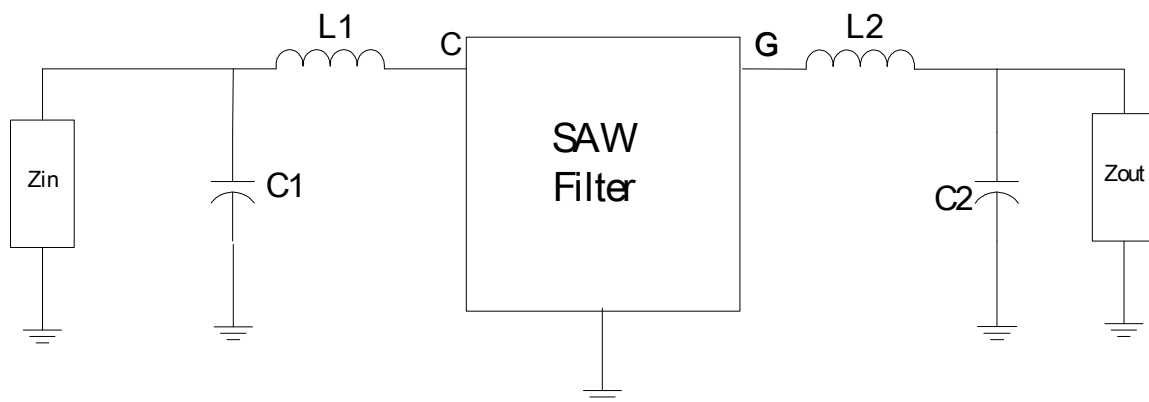
Model: TB0657A
Rev No: 1

D. OUTLINE DRAWING:



Pin C: RF input
 Pin G: RF output
 Pin H, D: Case Ground
 Pin A, B, E, F: Ground
 Unit: mm

E. MATCHING CIRCUIT:



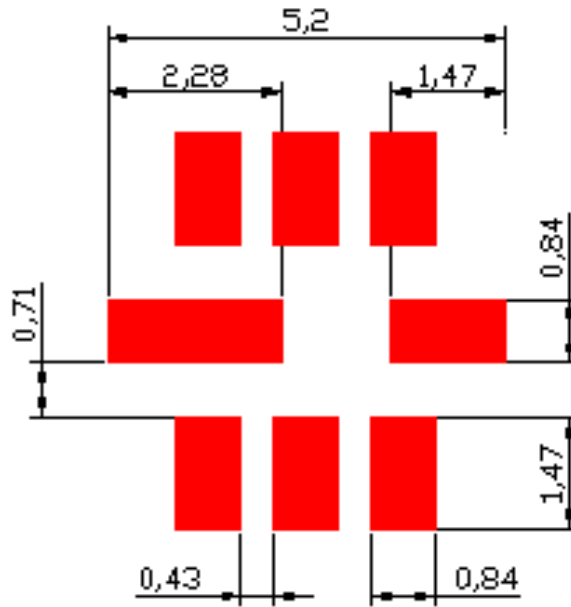
$$Z_{IN} = Z_{OUT} = 50\Omega$$

$$L1 = 18\text{nH}, C1 = 12\text{pF}, L2 = 15\text{nH}, C2 = 15\text{pF}$$

SAW Filter 427.5MHz
Part No: MP02634

Model: TB0657A
Rev No: 1

F. PCB FOOTPRINT:

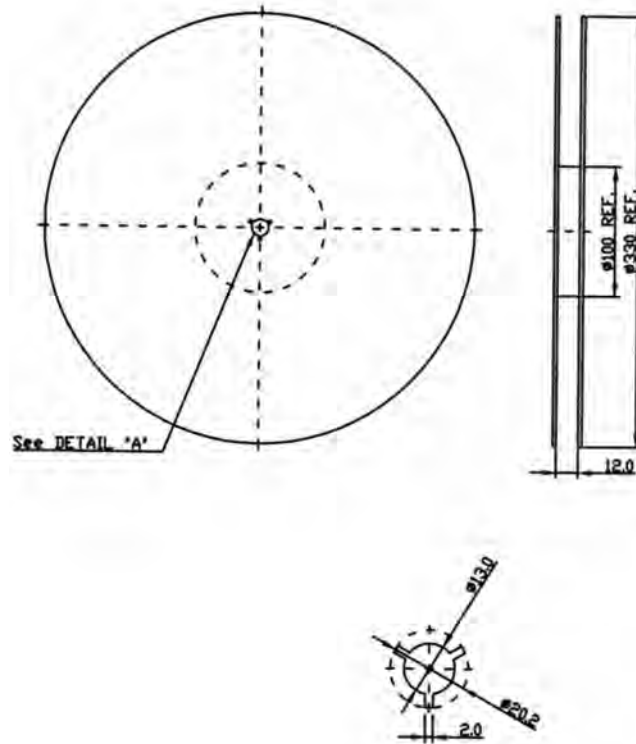


SAW Filter 427.5MHz
Part No: MP02634

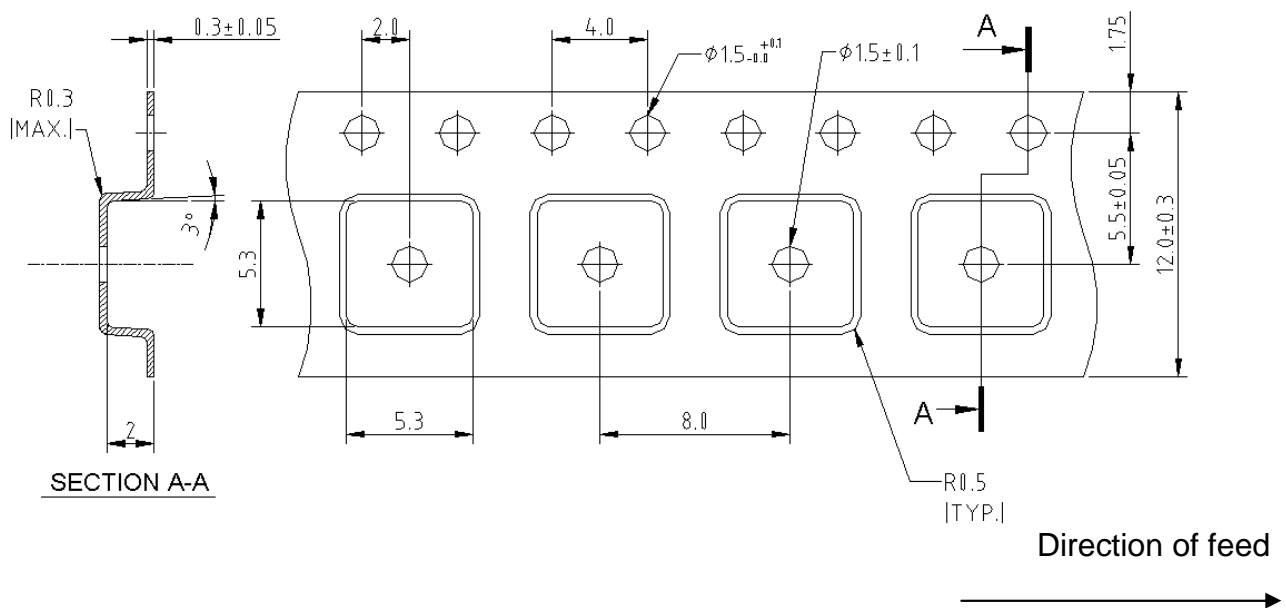
Model: TB0657A
Rev No: 1

G. PACKING:

1. REEL DIMENSION



2. TAPE DIMENSION



SAW Filter 427.5MHz
Part No: MP02634

Model: TB0657A
Rev No: 1

H. RECOMMENDED REFLOW PROFILE:

