

SAW Filter 343.5MHz

Model: TB0621A

Part No: **MP02717**

REV. NO.: 1

A. MAXIMUM RATING:

1. Operating Temperature: -10°C to +70°C
2. Storage Temperature: -40°C to +85°C
3. Maximum Input Power : 10dBm

B. ELECTRICAL CHARACTERISTICS:

1. Ambient Temperature: 25 °C

Item		Min.	Typical	Max.
Center frequency Fc	MHz	-	343.5	-
Insertion loss at Fc	dB	-	11.2	14.0
Bandwidth at -3.0dB	MHz	-	4.7	-
Amplitude Ripple (Fc ± 1.6 MHz)	dB	-	0.5	1.0
Group Delay Ripple (Fc ± 1.6 MHz)	nS	-	40	100
Triple transit suppression	nS	30	45	-
Attenuation (Reference level from minimum Insertion loss)				
243.5MHz ~ 334.5MHz	dB	40	54	-
334.5MHz ~338.5MHz	dB	35	50	-
348.5MHz ~352.5MHz	dB	35	45	-
352.5MHz ~443.5MHz	dB	40	50	-
Temp Coefficient	ppm/°C ²	-	-0.036	-

SAW Filter 343.5MHz
Part No: **MP02717**

Model: TB0621A
REV. NO.: 1

C. FREQUENCY CHARACTERISTICS:

(1) S21 Response:(span 150MHz)

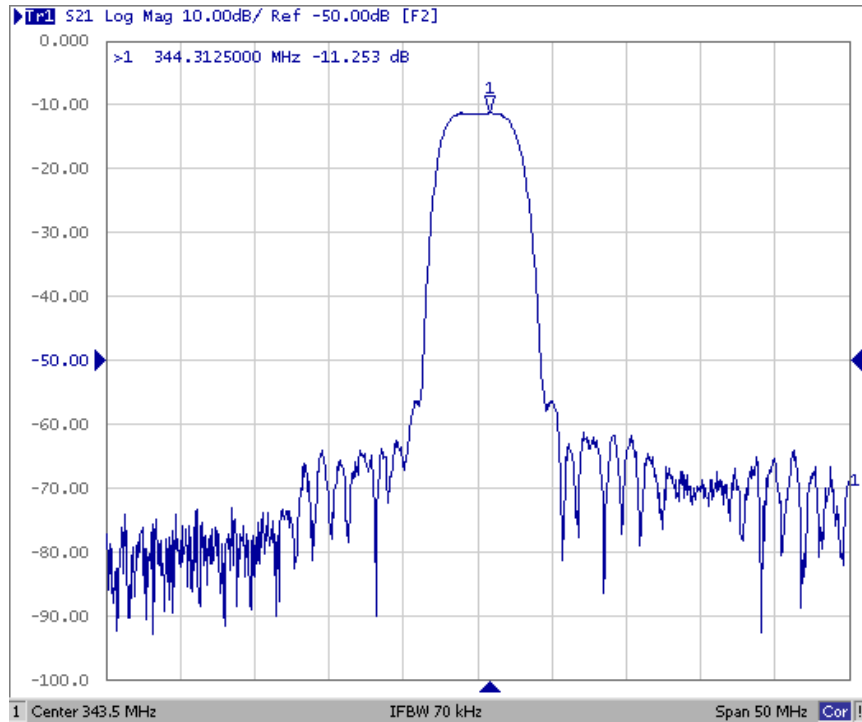


Fig1. Horizontal: 5MHz/Div Vertical: 10dB/Div

(2) S21 Response:(span 10MHz)

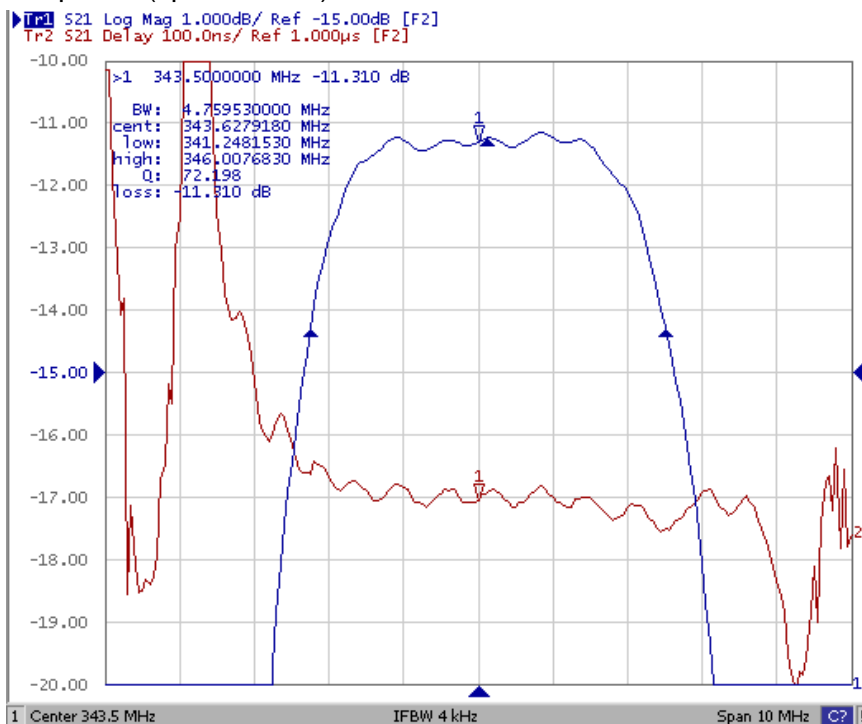


Fig2. Horizontal: 1MHz/Div Vertical: 1dB/Div

Vertical: 100ns/Div

SAW Filter 343.5MHz

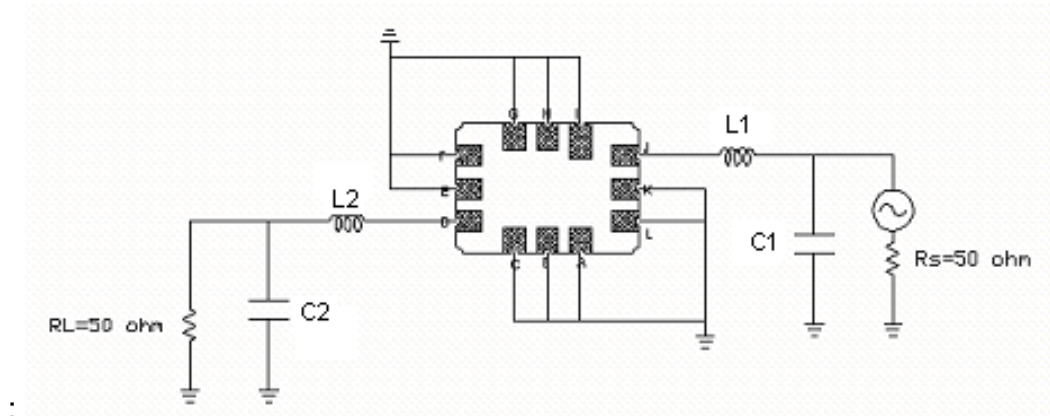
Model: TB0621A

Part No: **MP02717**

REV. NO.: 1

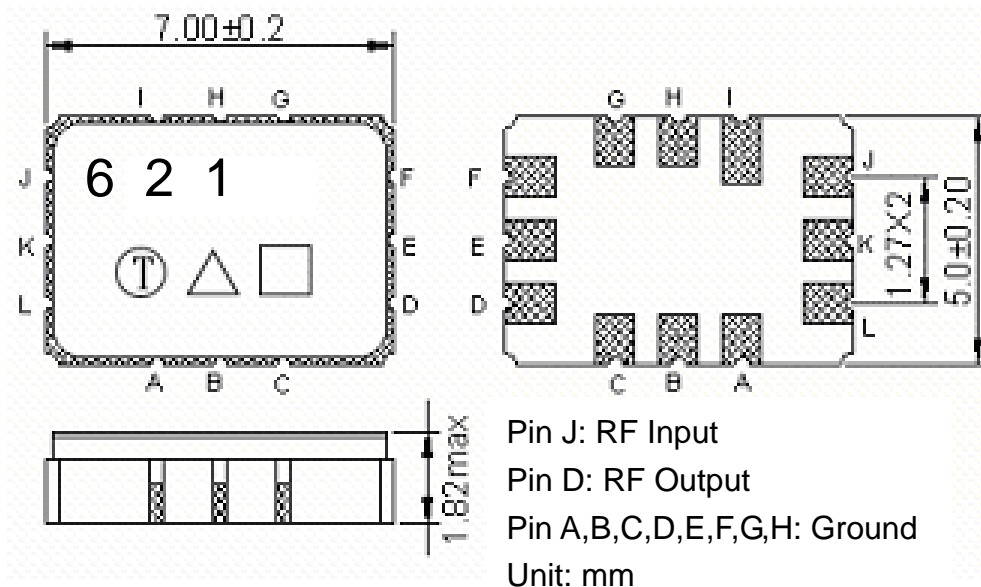
D. MEASUREMENT CIRCUIT:

1. Single ended input 50 ohm to Single ended Output 50 ohm



L1=56nH L2=47nH C1=20pF C2=18pF

E. OUTLINE DRAWING:



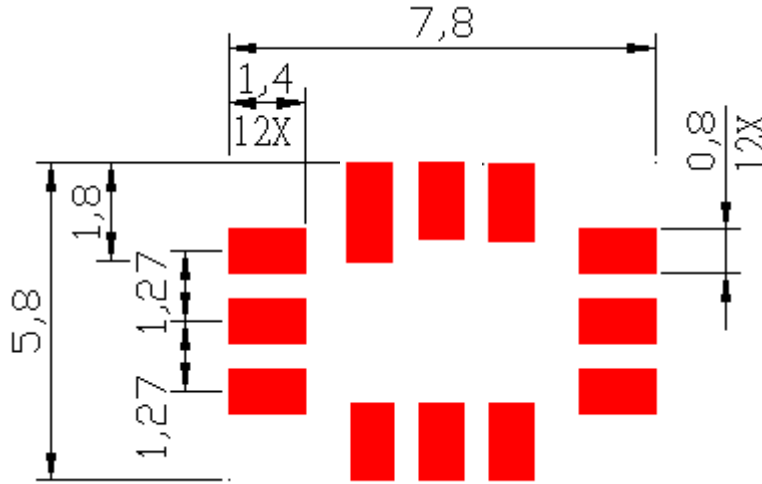
SAW Filter 343.5MHz

Model: TB0621A

Part No: MP02717

REV. NO.: 1

F. PCB FOOTPRINT:



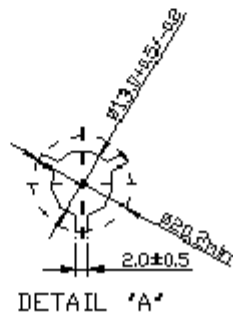
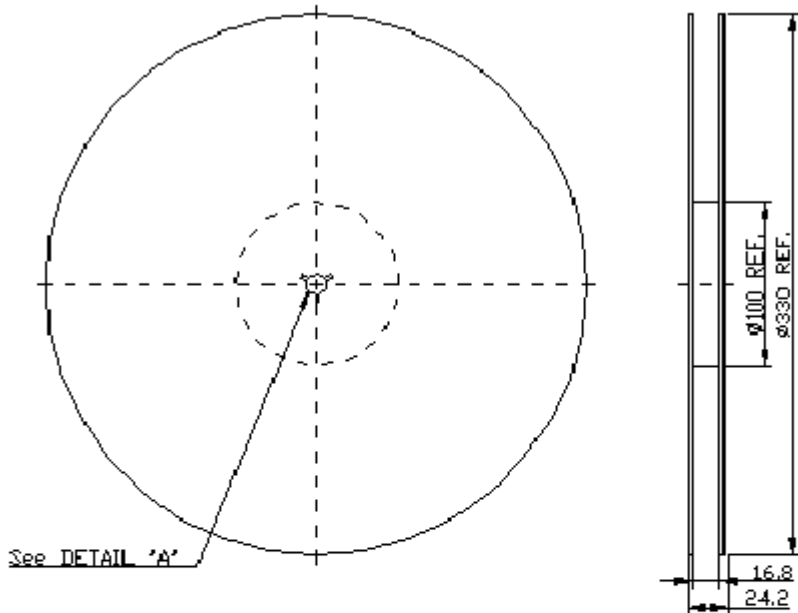
Unit: mm

SAW Filter 343.5MHz
Part No: MP02717

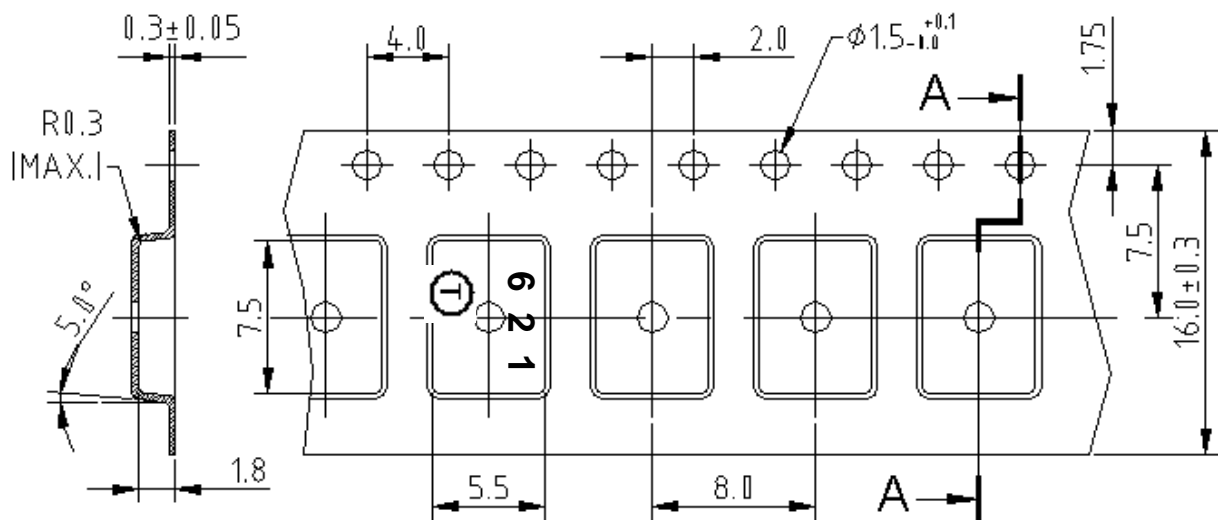
Model: TB0621A
REV. NO.: 1

G. PACKING:

1. REEL DIMENSION



2. TAPE DIMENSION



SAW Filter 343.5MHz

Model: TB0621A

Part No: MP02717

REV. NO.: 1

H. RECOMMENDED REFLOW PROFILE:

