

IF SAW Filter 256.36MHz
Part No: MP03014

Model: TB0788A
Rev No: 1

A. MAXIMUM RATING:

1. Operating Temperature: -30°C ~ +85°C
2. Storage Temperature: -40°C ~ +85°C
3. Input power: 10dBm

B. CHARACTERISTICS:

Ambient Temperature: 25°C

Item	Unit	Min.	Typ.	Max.
Center Frequency	MHz	-	256.36	-
Insertion Loss (Fc ± 10.0MHz)	dB	-	12	16
Passband Ripple (Fc ± 10.0MHz)	dB	-	0.55	1.0
1dB BW	MHz	20	21.5	-
45dB BW	MHz	-	30.5	31
Attenuation 1 @ 10 ~ 240MHz	dB	40	44	-
Attenuation 2 @ 273 ~ 460MHz	dB	40	43	-

C. FREQUENCY CHARACTERISTICS:

1. S21 Response: (span: 80MHz)

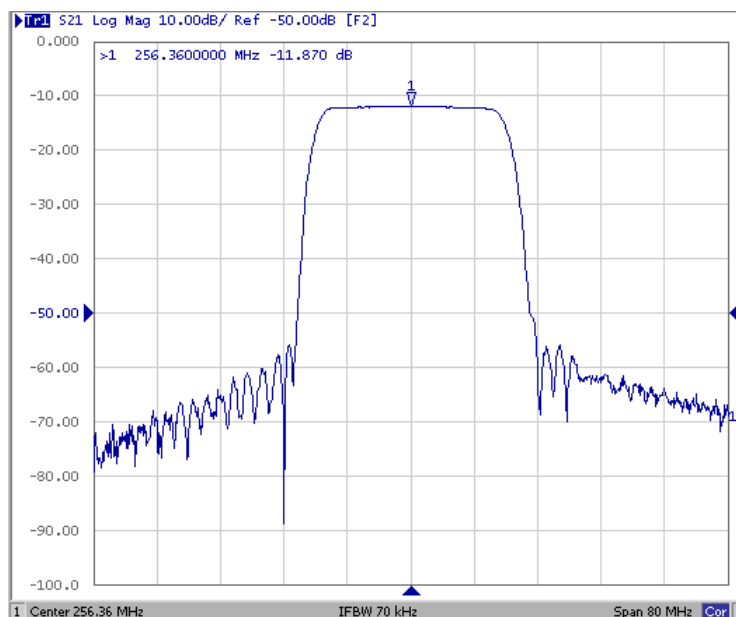


Fig 1. Horizontal: 8MHz/Div Vertical: 10dB/Div

IF SAW Filter 256.36MHz
Part No: MP03014

Model: TB0788A
Rev No: 1

2. Group-Delay Ripple: (span: 30MHz)

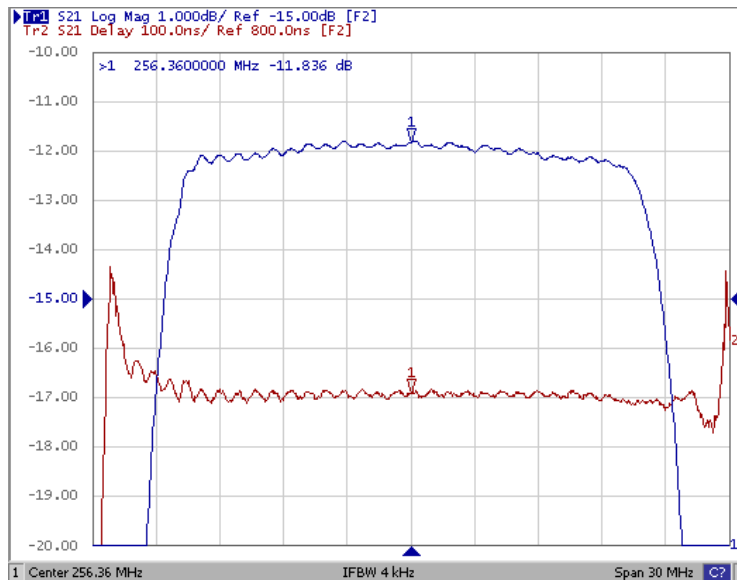
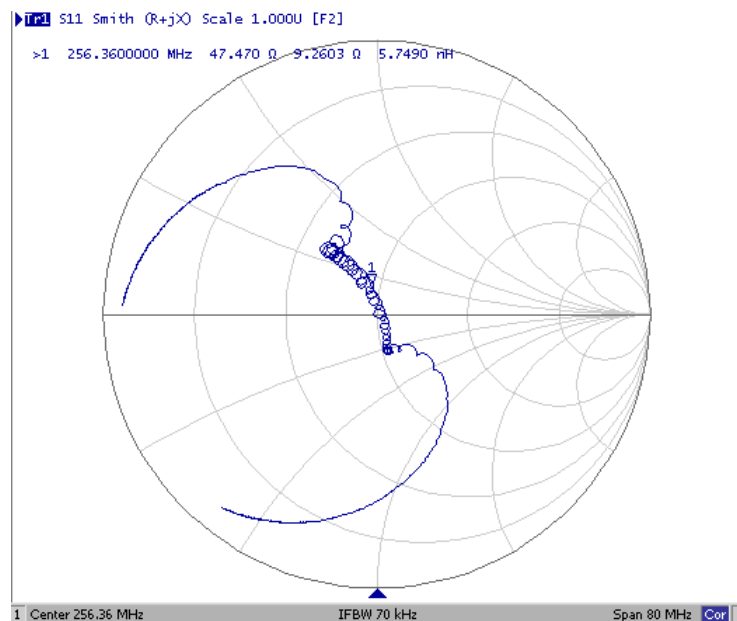


Fig2. Horizontal: 3MHz/Div Vertical: 100nec/Div

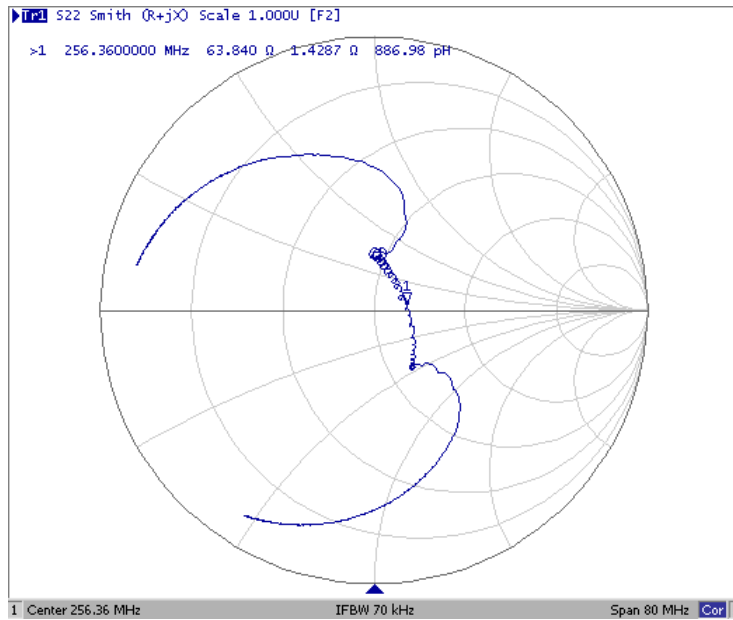
3. S11 Smith Chart: (span: 80MHz)



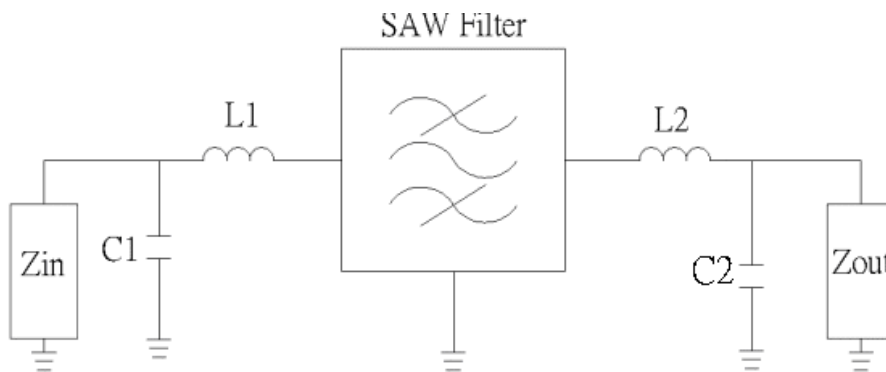
IF SAW Filter 256.36MHz
Part No: MP03014

Model: TB0788A
Rev No: 1

4. S22 Smith Chart (span: 80MHz)



D. MEASUREMENT CIRCUIT:

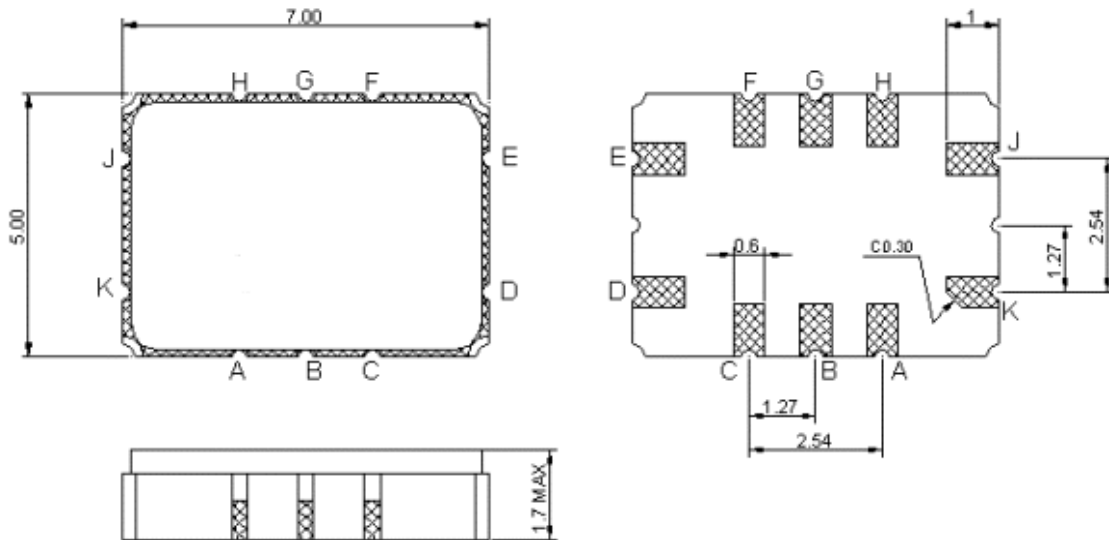


Z_{in} and Z_{out} are $50\ \Omega$.
 $L1 = 47\ \text{nH}$, $C1 = 37\ \text{pF}$, $L2 = 34\ \text{nH}$, $C2 = 27\ \text{pF}$

IF SAW Filter 256.36MHz
Part No: MP03014

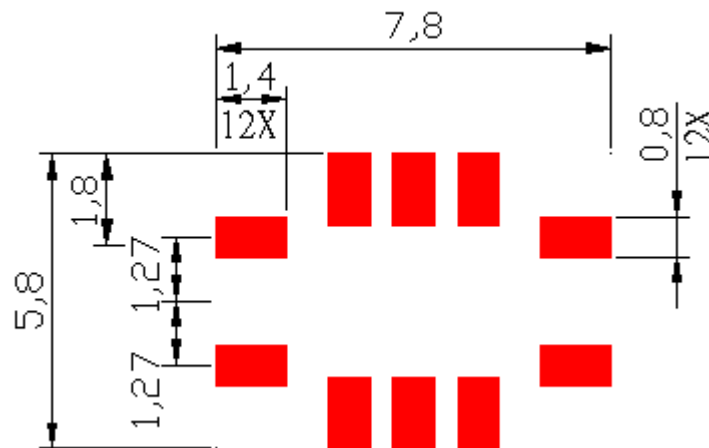
Model: TB0788A
Rev No: 1

E. OUTLINE DRAWING:



- J: RF input
- Pin D: RF output
- Pin K, E: Case Ground
- Pin A, B, C, F, G, H: Ground

F. PCB FOOTPRINT:

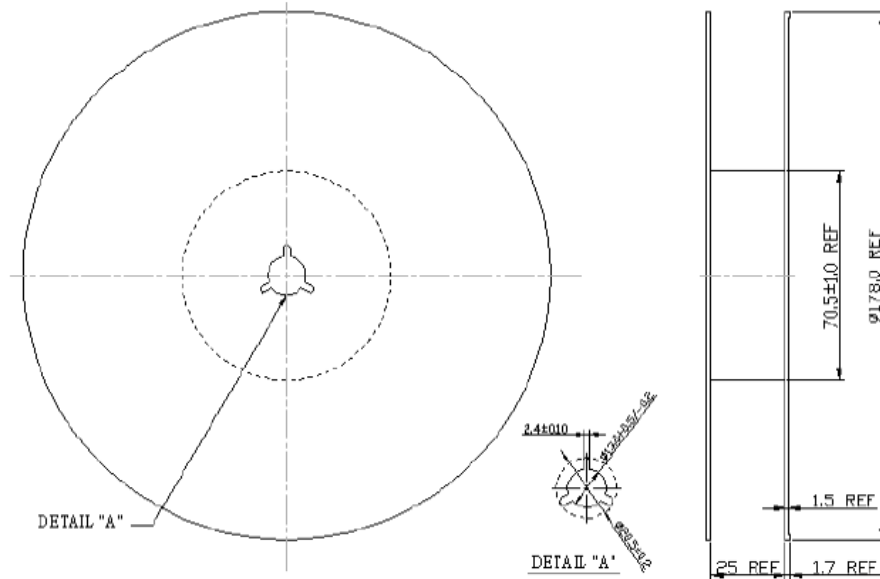


IF SAW Filter 256.36MHz
Part No: MP03014

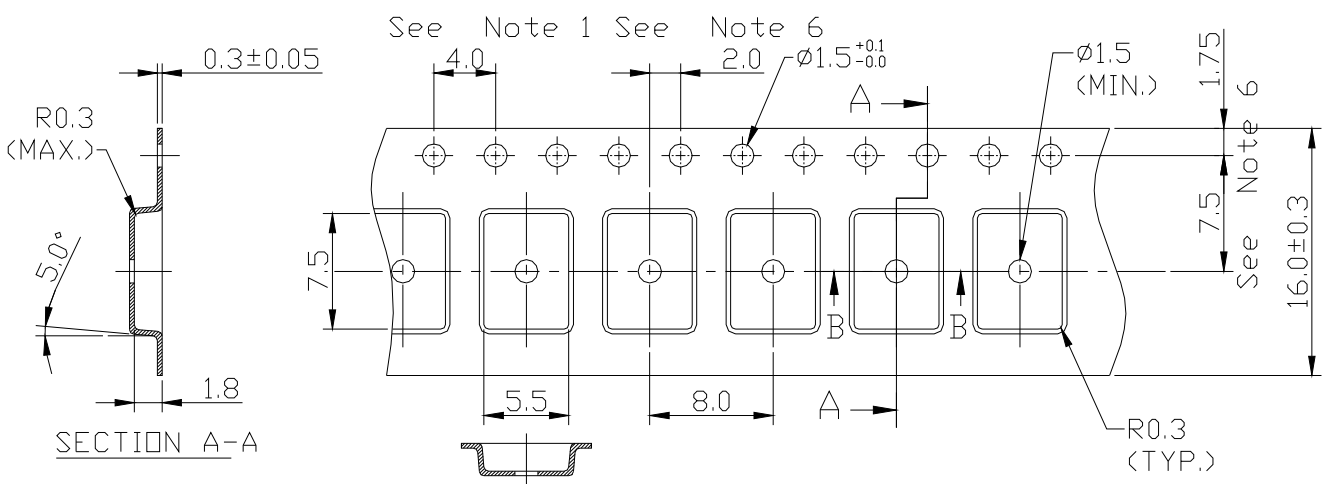
Model: TB0788A
Rev No: 1

G. PACKING:

1. REEL DIMENSION



2. TAPE DIMENSION



IF SAW Filter 256.36MHz
Part No: MP03014

Model: TB0788A
Rev No: 1

H. RECOMMENDED REFLOW PROFILE:

