

**SAW Filter 996.34MHz**  
**Part No: MP03067**

**Model: TA0820A**  
**Rev No: 2.1**

**A. MAXIMUM RATING:**

1. Input Power Level: 10dBm
2. DC voltage: 5V
3. Operating Temperature: -40°C to +85°C
4. Storage Temperature: -40°C to +85°C

**B. ELECTRICAL CHARACTERISTICS:**

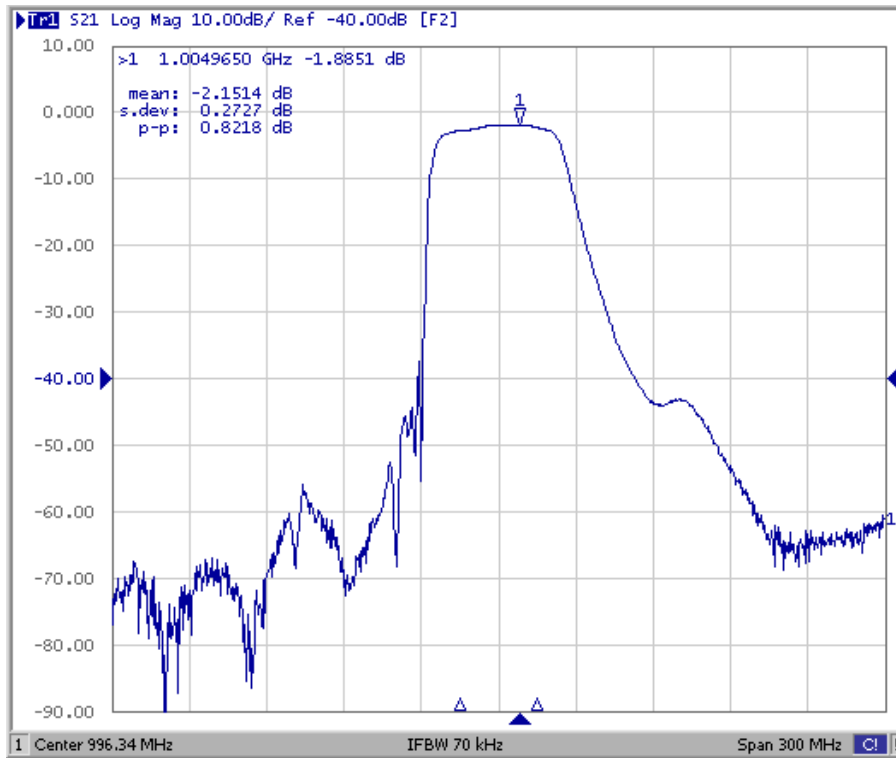
Item	Unit	Min.	Typ.	Max.
Center frequency Fc	MHz	-	996.34	-
Insertion loss at Fc IL	dB	-	1.9	-
1dB bandwidth	MHz	30	38	-
3dB bandwidth	MHz	-	48	-
Insertion loss at 981.34 ~ 1011.34MHz	dB	-	2.6	4.8
Ripple (981.34 ~ 1011.34MHz)	dB	-	0.85	1.6
VSWR (981.34 ~ 1011.34MHz)		-	1.6	2.5
Group Delay ripple at 981.34 ~ 1011.34MHz	nsec		15	80
Attenuation (Reference level from IL)				
10 ~ 956MHz	dB	40	50	-
1046 ~ 1097MHz	dB	28	35	-
1097 ~ 1146MHz	dB	40	60	-

**SAW Filter 996.34MHz**  
**Part No: MP03067**

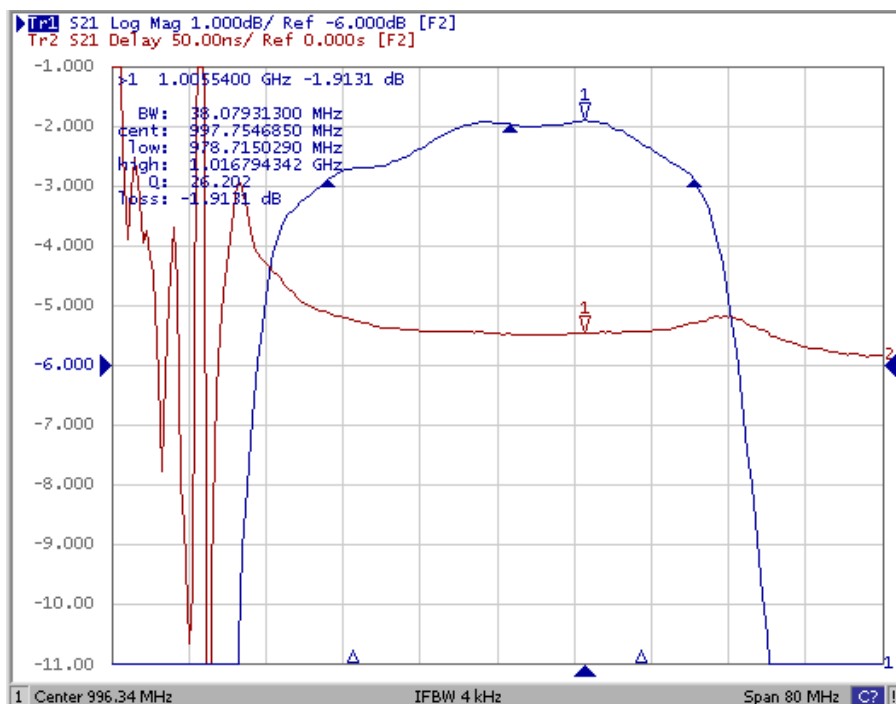
**Model: TA0820A**  
**Rev No: 2.1**

**C. FREQUENCY CHARACTERISTICS:**

1. Wide band Response: (span 300MHz)



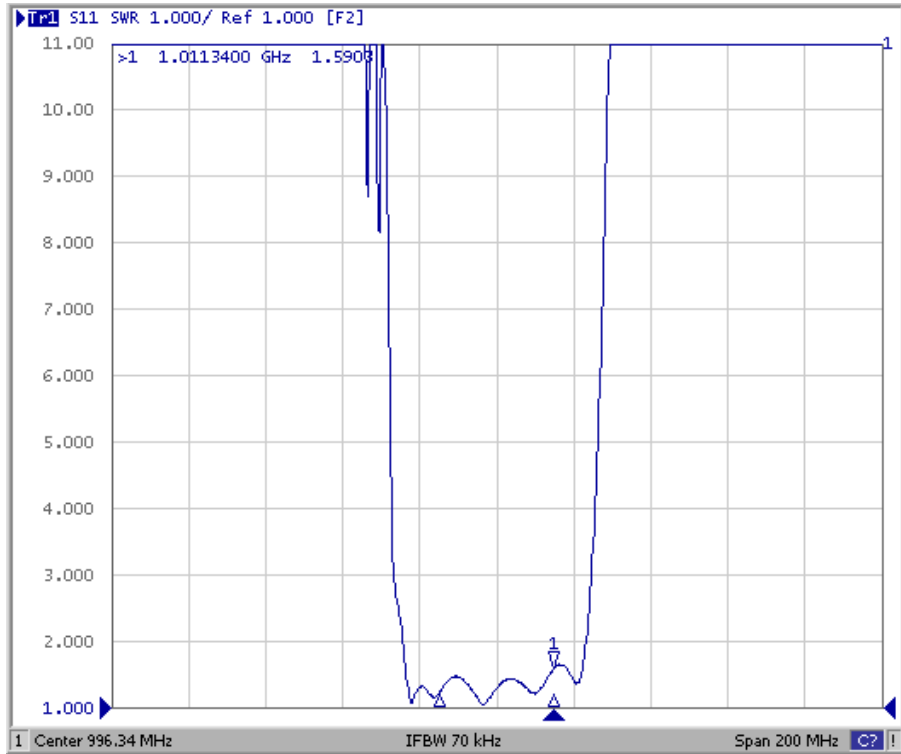
2. Pass band Response: (span 80MHz)



**SAW Filter 996.34MHz**  
**Part No: MP03067**

**Model: TA0820A**  
**Rev No: 2.1**

3. S11 VSWR Variation: (span 200MHz)



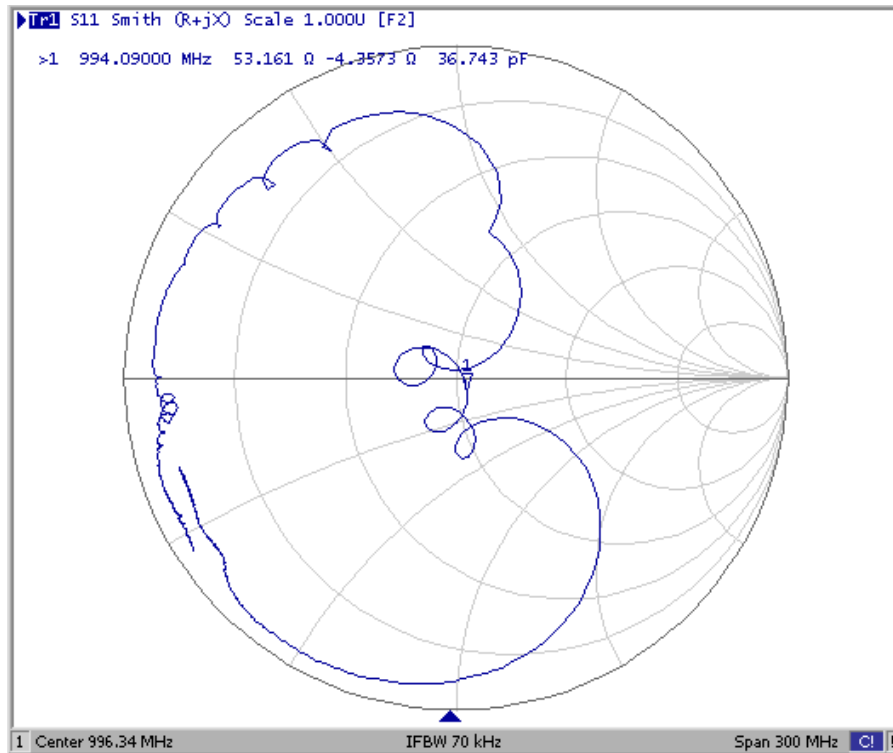
4. S22 VSWR Variation: (span 200MHz)



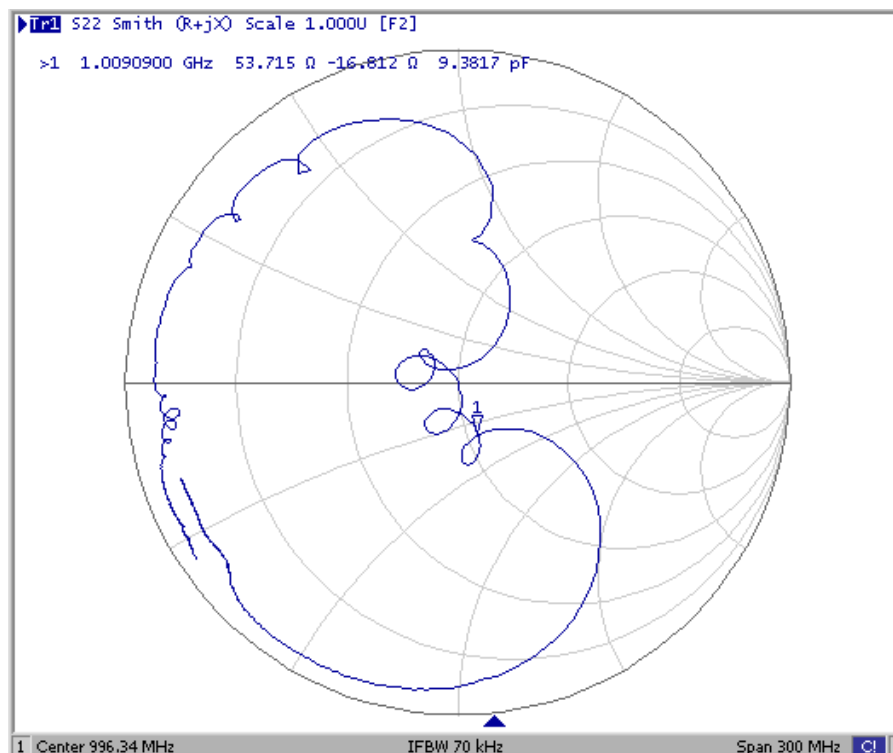
**SAW Filter 996.34MHz**  
**Part No: MP03067**

**Model: TA0820A**  
**Rev No: 2.1**

5. S11 Smith-Chart: (span 300MHz)



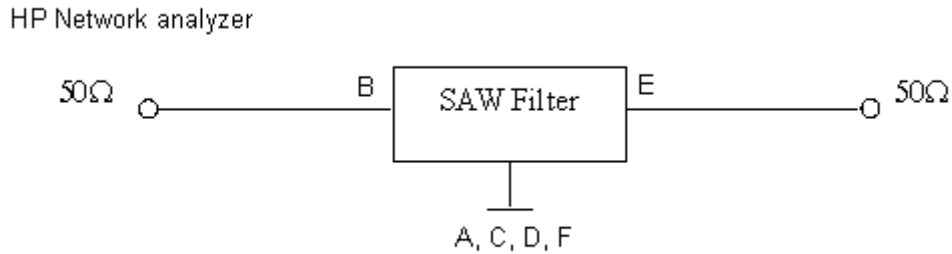
6. S22 Smith-Chart: (span 300MHz)



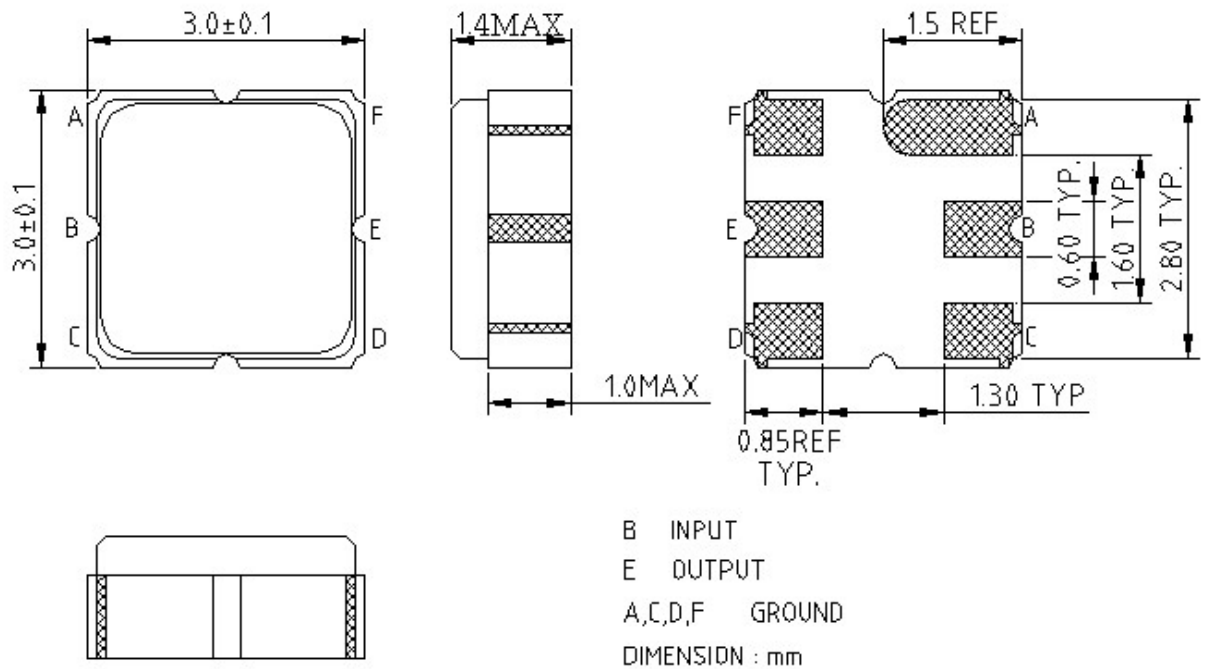
**SAW Filter 996.34MHz**  
**Part No: MP03067**

**Model: TA0820A**  
**Rev No: 2.1**

**D. MEASUREMENT CIRCUIT:**



**E. OUTLINE DRAWING:**



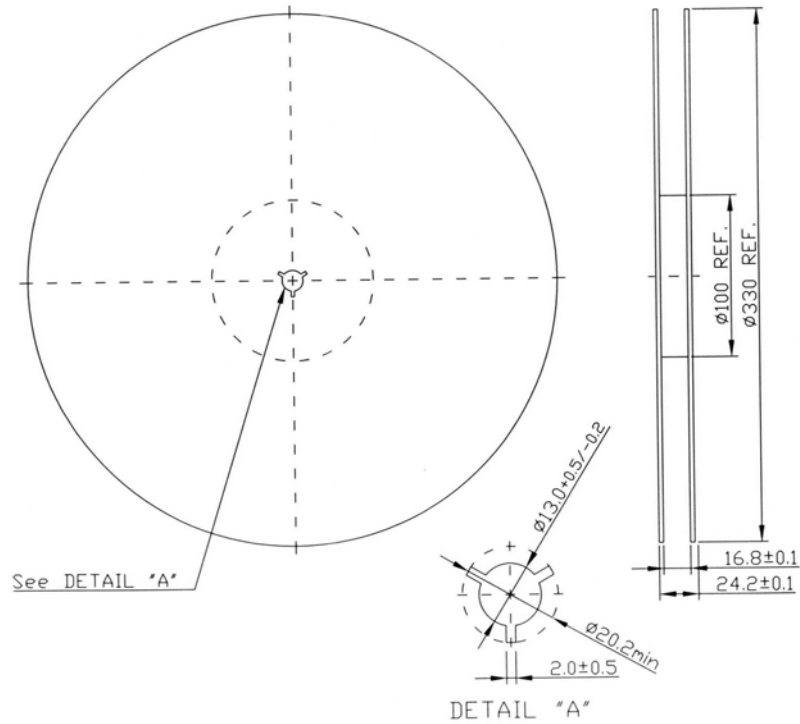
B: Input  
 E: Output  
 A, C, D, F: Ground  
 Unit: mm

**SAW Filter 996.34MHz**  
**Part No: MP03067**

**Model: TA0820A**  
**Rev No: 2.1**

**F. PACKING:**

1. Reel Dimension



2. Tape Dimension

