

SAW Filter 881.5MHz
Part No: MP03083

Model: TA0626A
Rev No: 2

A. MAXIMUM RATING:

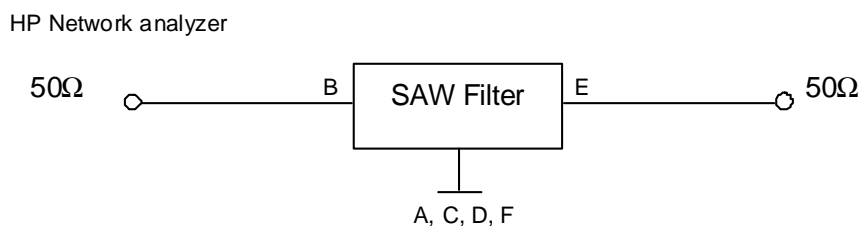
1. Input Power Level: 10dBm
2. DC voltage: 3V
3. Operating Temperature: -25°C to 75°C
4. Storage Temperature: -40°C to +85°C

B. CHARACTERISTICS:

Item	Unit	Min.	Typ.	Max.
Center Frequency Fc	MHz	-	881.5	-
Insertion loss (866.5 ~ 896.5MHz) IL	dB	-	3.0	4.0
Amplitude ripple (866.5 ~ 896.5MHz)	dB		0.8	2.0
VSWR (866.5 ~ 896.5MHz)			1.5	2.2
Rejection (referent to 0dB)				
DC ~ 696MHz	dB	50	58	-
956 ~ 980MHz	dB	38	46	-
980 ~ 1500MHz	dB	50	57	-
1500 ~ 2000MHz	dB	30	45	-

Note: No matching network required for operation at 50Ω

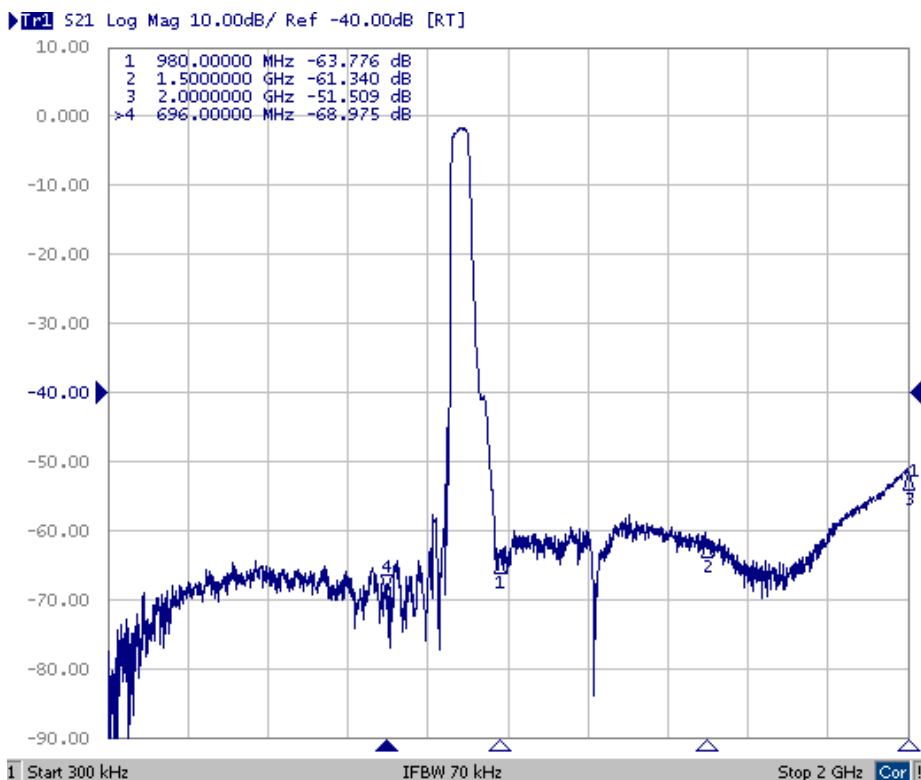
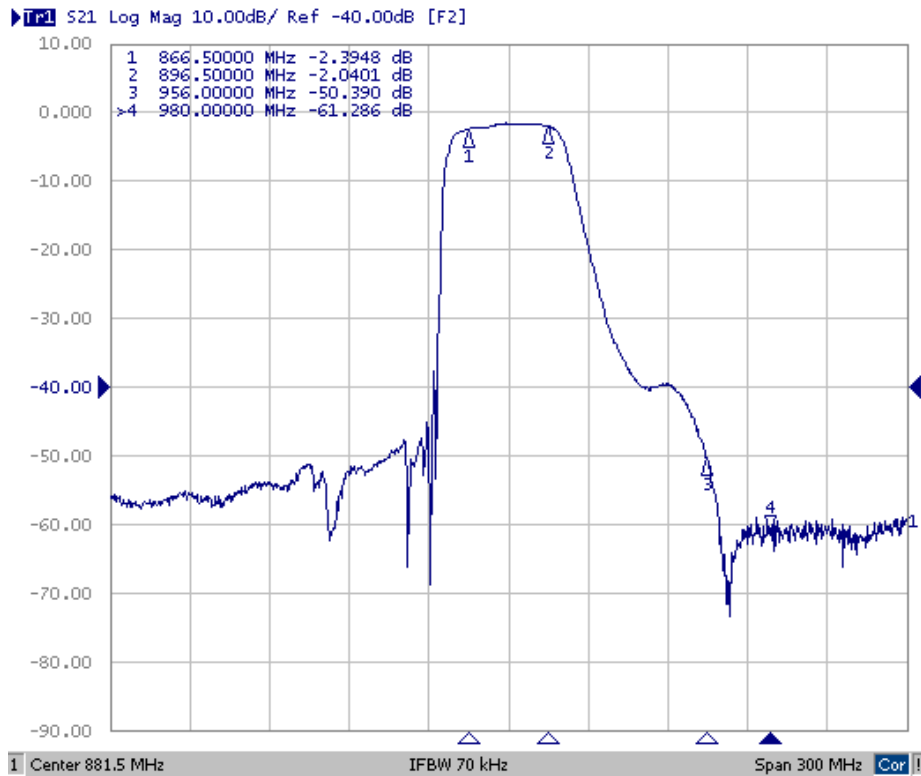
C. MEASUREMENT CIRCUIT:



SAW Filter 881.5MHz
Part No: MP03083

Model: TA0626A
Rev No: 2

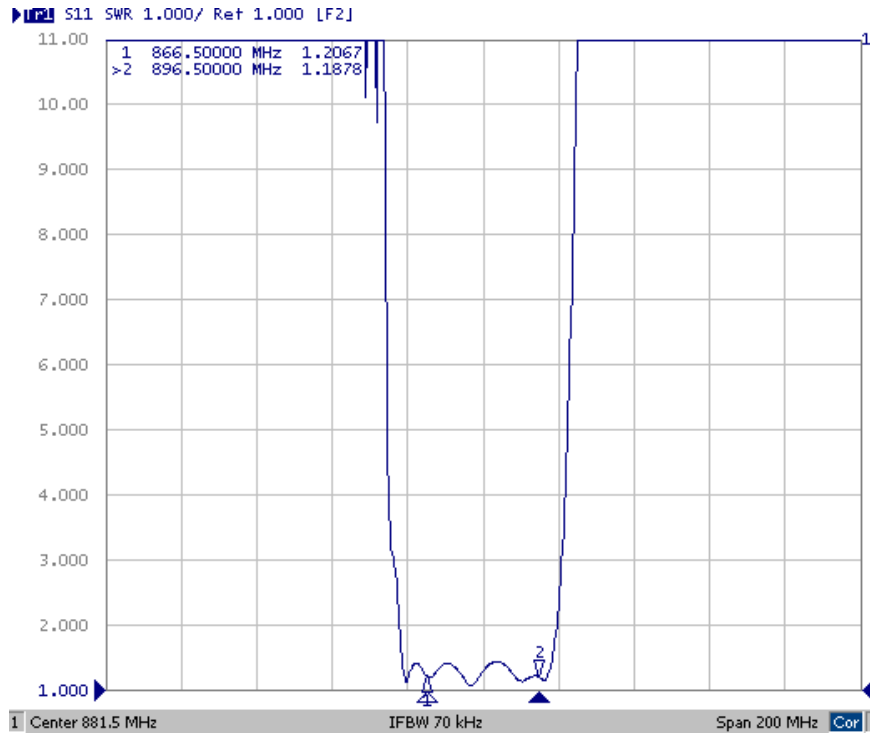
D. TRANSFER FUNCTION:



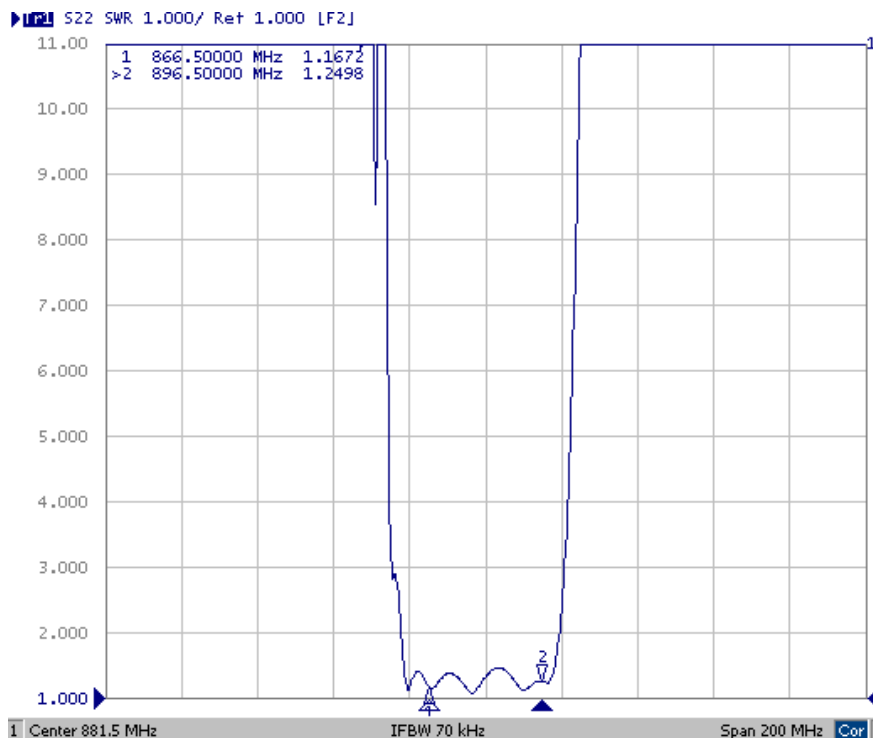
SAW Filter 881.5MHz
Part No: MP03083

Model: TA0626A
Rev No: 2

VSWR S11



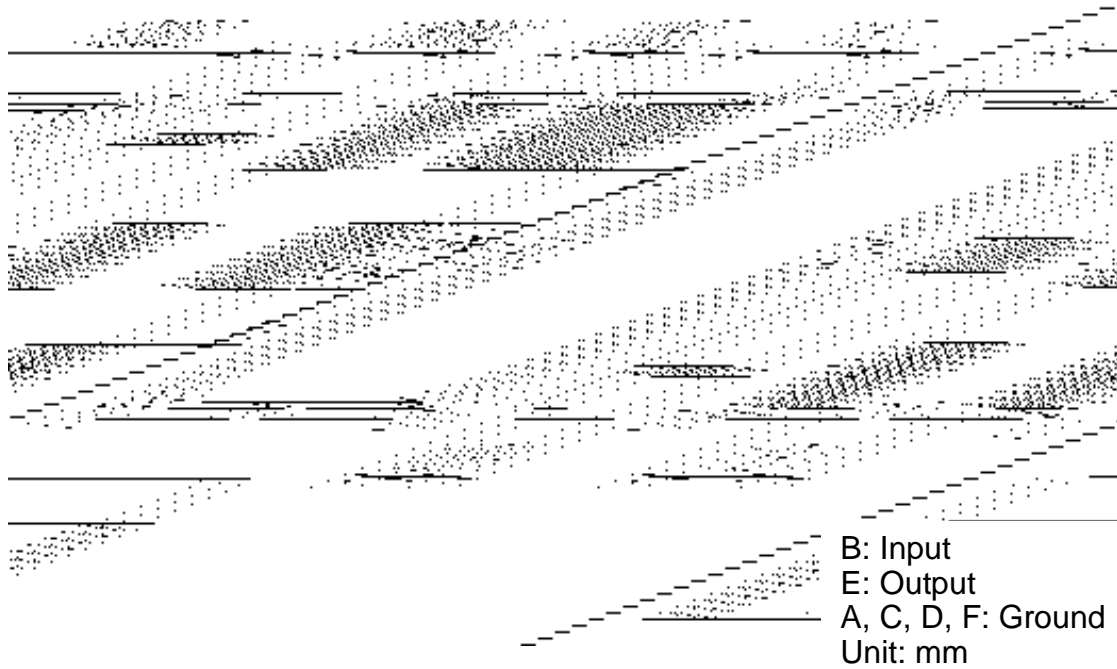
VSWR S22



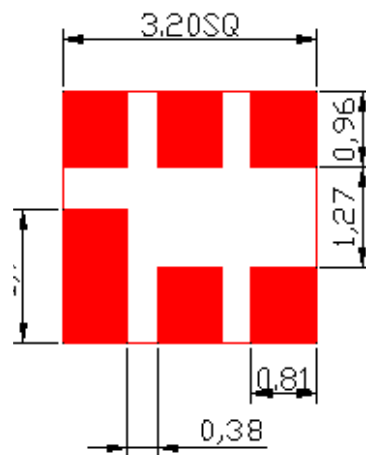
SAW Filter 881.5MHz
Part No: MP03083

Model: TA0626A
Rev No: 2

E. OUTLINE DRAWING:



F. PCB FOOTPRINT:

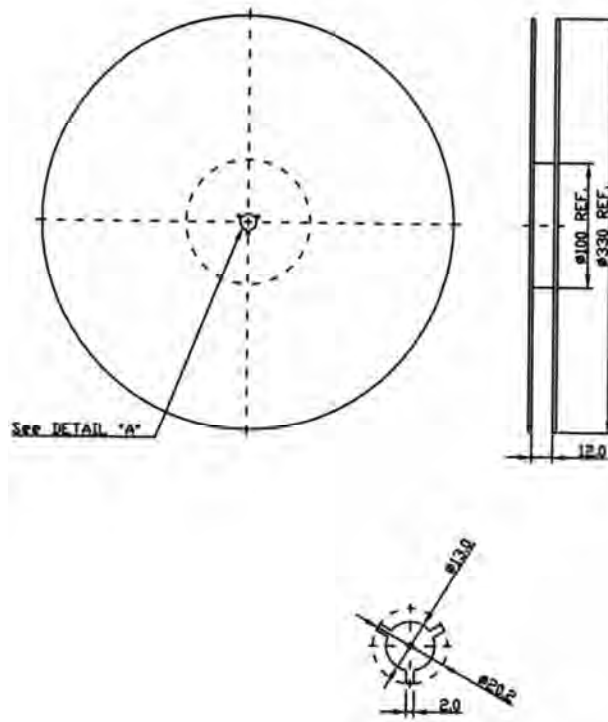


SAW Filter 881.5MHz
Part No: MP03083

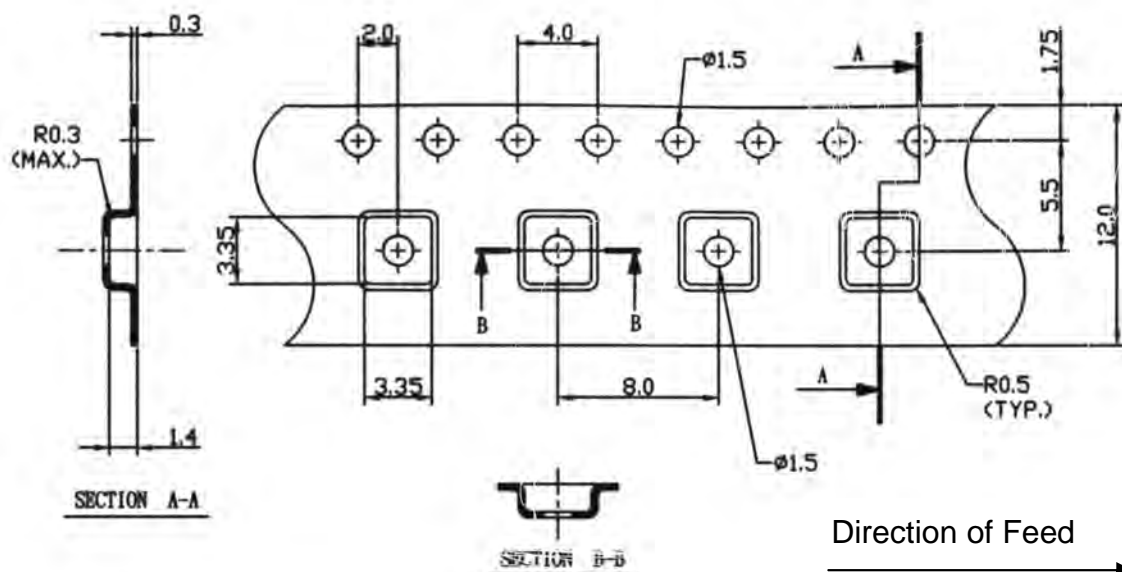
Model: TA0626A
Rev No: 2

G. PACKING:

1. REEL DIMENSION



2. TAPE DIMENSION



SAW Filter 881.5MHz
Part No: MP03083

Model: TA0626A
Rev No: 2

H. RECOMMENDED REFLOW PROFILE:

