

SAW Filter 472.2MHz
Part No: MP03190

Model: TB0576A
Rev No: 1

A. MAXIMUM RATING:

1. Operating Temperature: -40°C to +85°C
2. Storage Temperature: -40°C to +85°C
3. Maximum Input Power: 10dBm

B. ELECTRICAL CHARACTERISTICS:

Ambient Temperature: 25°C

Item		Min.	Typ.	Max.
Center frequency Fc	MHz	-	472.2	-
Insertion loss at Fc	dB	-	12.6	13.5
Bandwidth at -1.0dB	MHz	27.0	30.3	-
Amplitude Ripple (Fc ± 11.5MHz)	dB	-	0.4	1.0
Group Delay Ripple (Fc ± 11.5MHz)	nS	-	30	-
Attenuation (Reference level from minimum Insertion loss)				
300MHz ~ 447MHz	dB	40	45	-
499MHz ~ 650MHz	dB	35	40	-
Temp Coefficient	ppm/°C	-	-93	-

SAW Filter 472.2MHz
Part No: MP03190

Model: TB0576A
Rev No: 1

C. FREQUENCY CHARACTERISTICS:

1. S21 Response

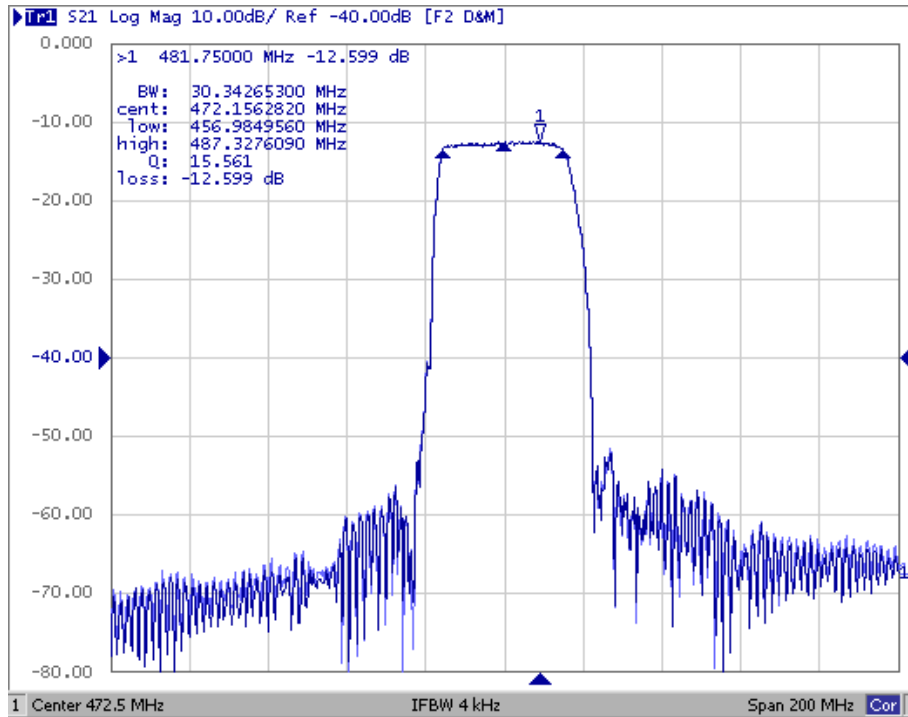


Fig.1: Horizontal: 20MHz/Div Vertical: 10dB/Div

2. Passband Ripple

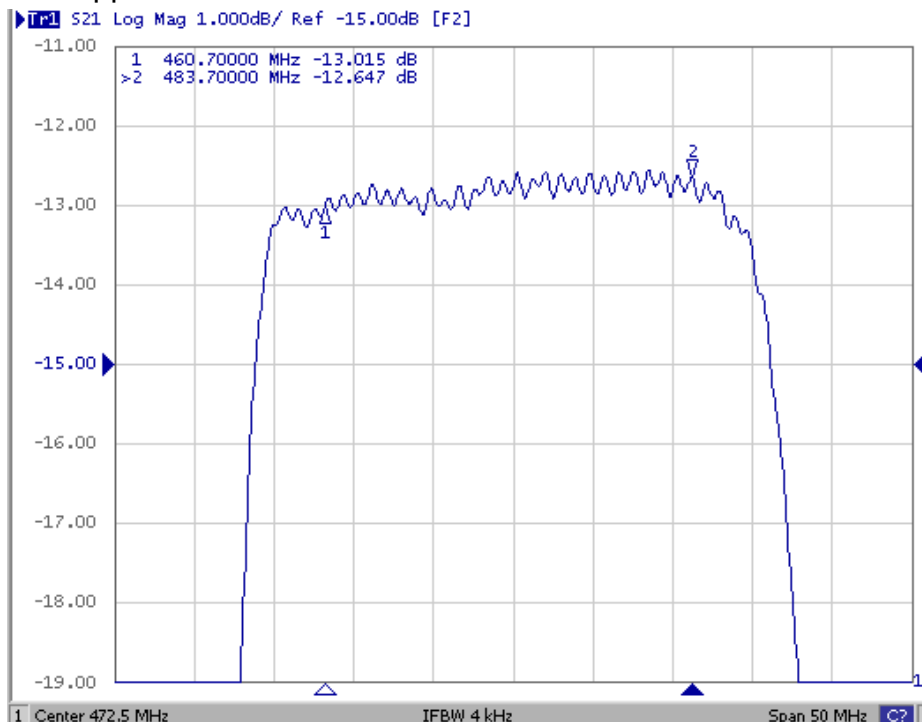


Fig.2: Horizontal: 5MHz/Div Vertical: 1dB/Div

SAW Filter 472.2MHz
Part No: MP03190

Model: TB0576A
Rev No: 1

3. Group Delay Ripple

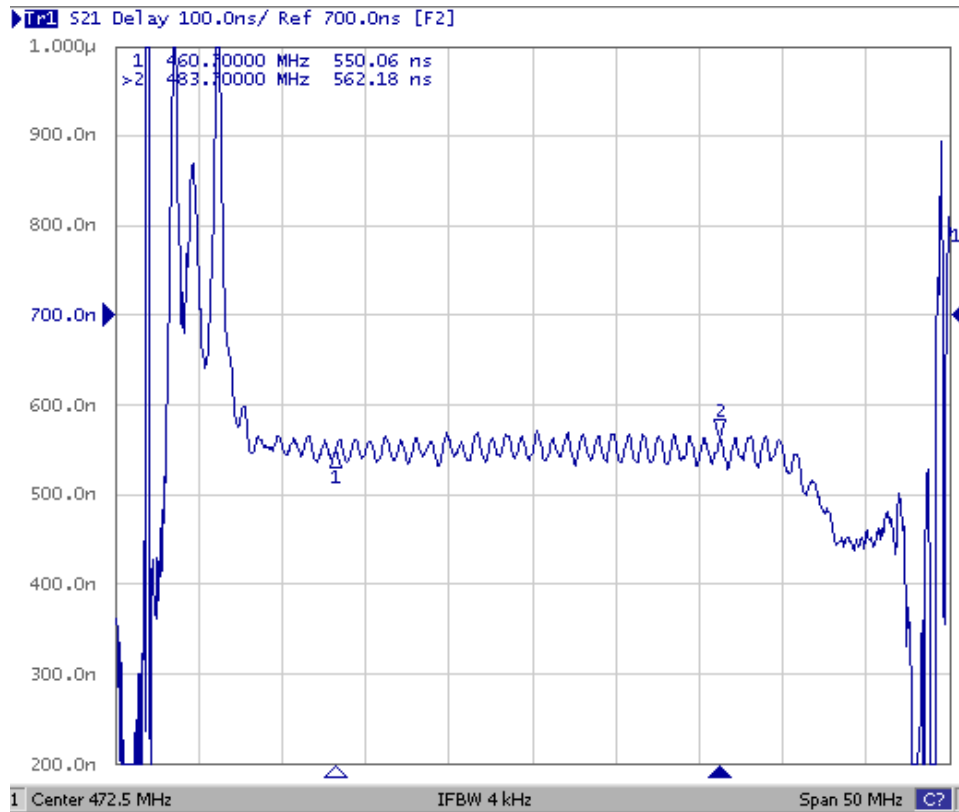
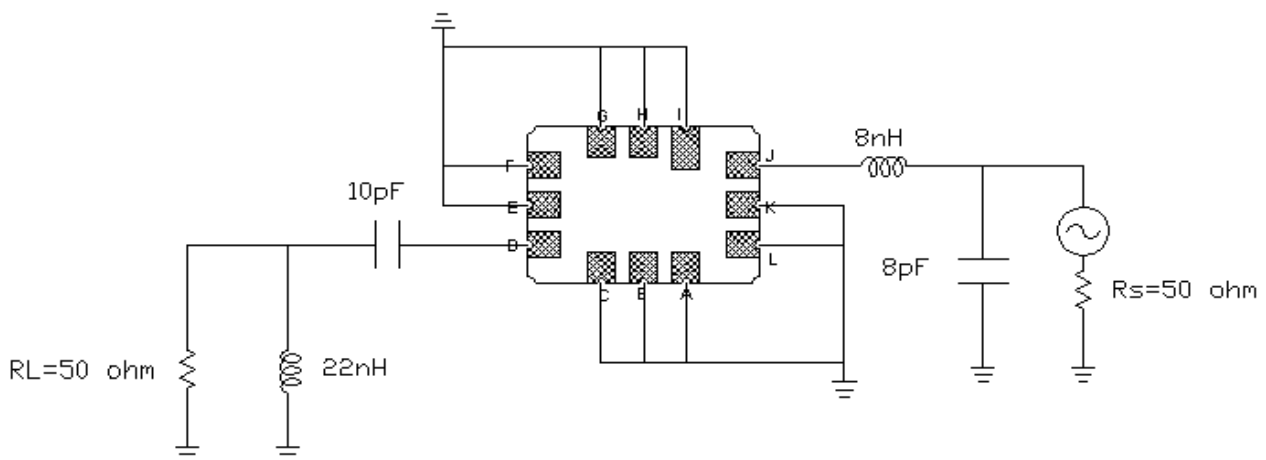


Fig.3. Horizontal: 5MHz/Div Vertical: 100nS/Div

D. MEASUREMENT CIRCUIT:

Single ended input 50 ohm to Single ended Output 50Ω

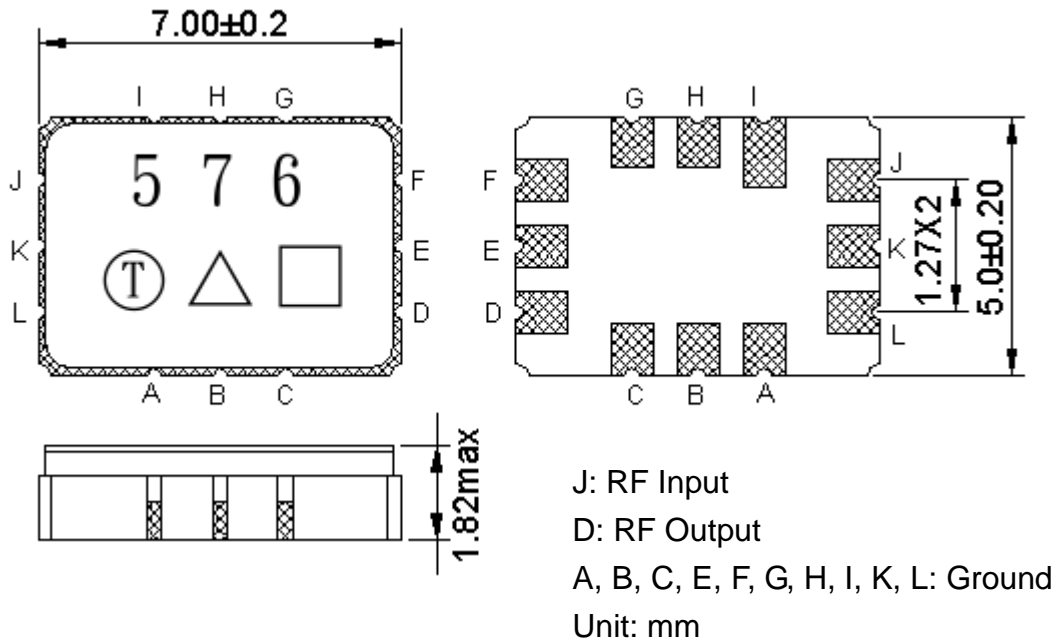


Note: The matching structure will change according to different test fixture.

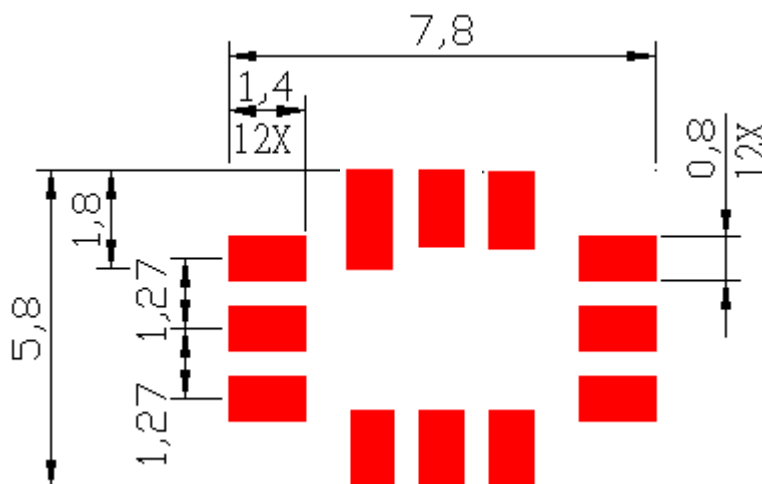
SAW Filter 472.2MHz
Part No: MP03190

Model: TB0576A
Rev No: 1

E. OUTLINE DRAWING:



F. PCB FOOTPRINT:

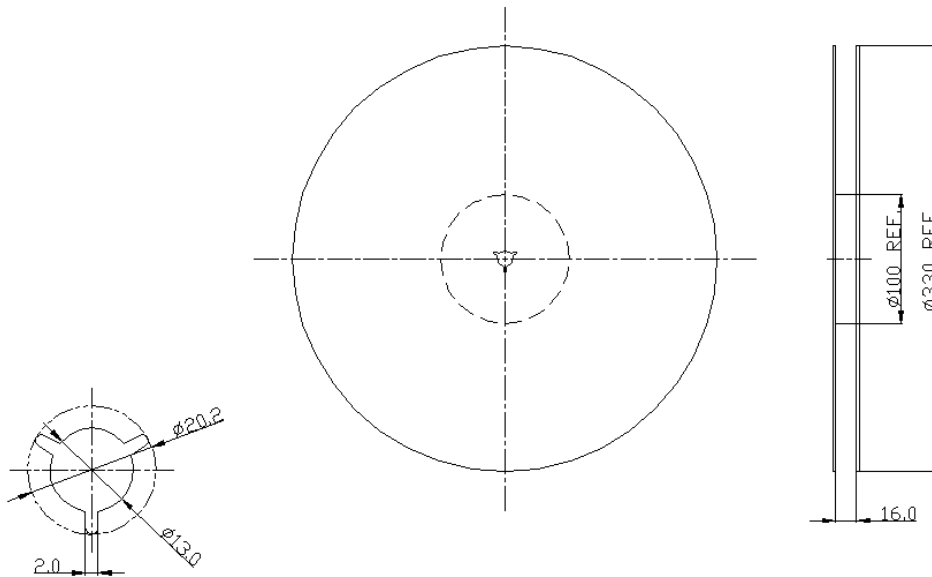


SAW Filter 472.2MHz
Part No: MP03190

Model: TB0576A
Rev No: 1

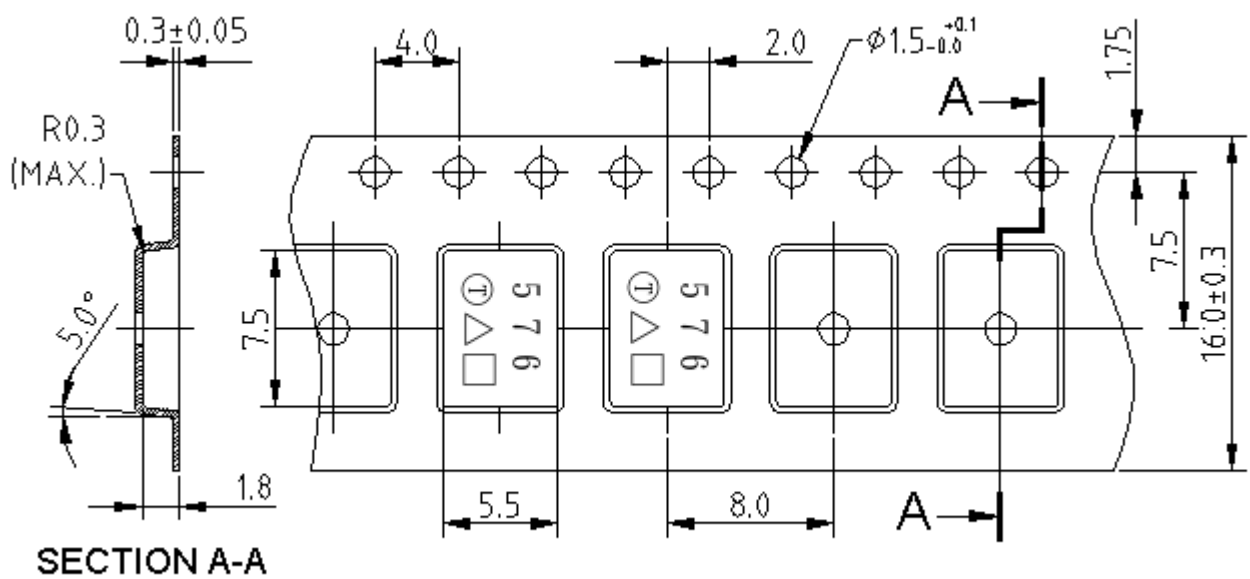
G. PACKING:

1. REEL DIMENSION



Unit: mm

2. TAPE DIMENSION



Unit: mm

SAW Filter 472.2MHz
Part No: MP03190

Model: TB0576A
Rev No: 1

H. RECOMMENDED REFLOW PROFILE:

