

**SAW Filter 109MHz**  
**Part No: MP03228**

**Model: TB0768A**  
**Rev No: 1**

**A. MAXIMUM RATING:**

1. Input Power Level: 10dBm
2. DC Voltage: 5V
3. Operating Temperature: -20°C to 70°C
4. Storage Temperature: -40°C to 85°C

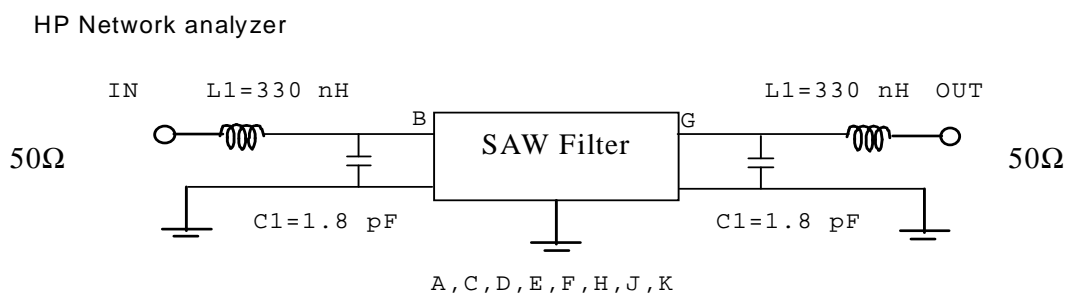
**B. ELECTRICAL CHARACTERISTICS:**

Item	Unit	Min.	Typ.	Max.
Center frequency Fc	MHz	-	109	-
Minimum Insertion Loss (Fc ± 17.5kHz) IL	dB	-	2.4	6
3dB bandwidth BW-3	kHz	35	72	-
Passband Ripple (Fc ± 17.5kHz )	dB	-	0.7	3
Group delay ripple (Fc ± 17.5kHz ) D	µs	-	4	12
Relative Attenuation				
Fc ± 200kHz	dB	50	64	-
Fc ± 500kHz	dB	40	55	-
Temperature coefficient of frequency TCf		-0.036 ppm/K <sup>2</sup>		

Note: Considering -8kHz frequency shift from -20°C to +70°C

**C. MEASUREMENT CIRCUIT:**

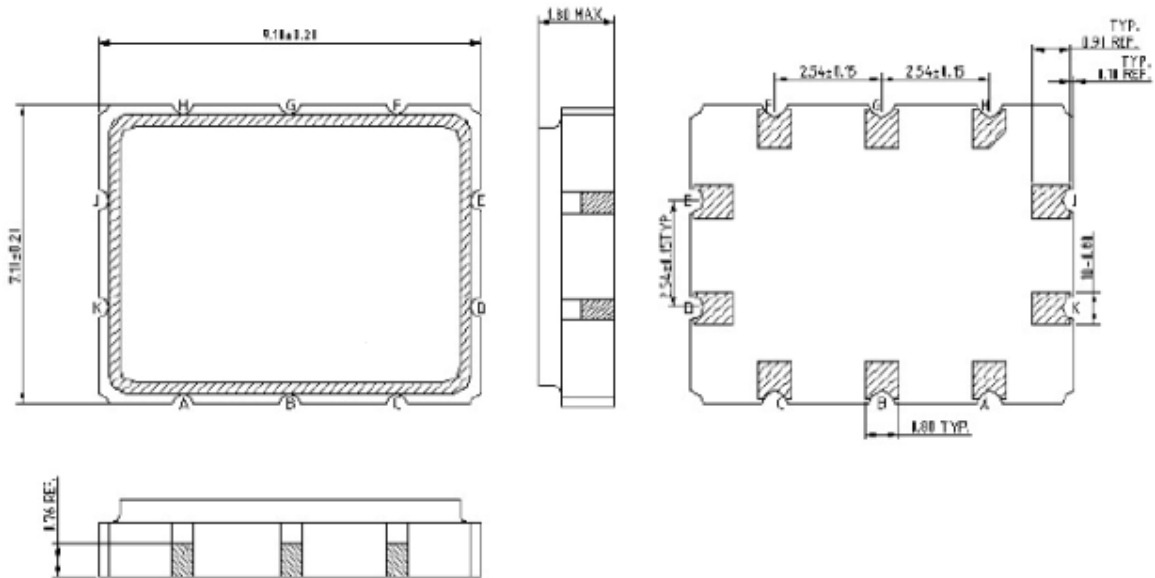
50Ω Test circuit (single-ended / single-ended)



**SAW Filter 109MHz**  
**Part No: MP03228**

**Model: TB0768A**  
**Rev No: 1**

**D. OUTLINE DRAWING:**

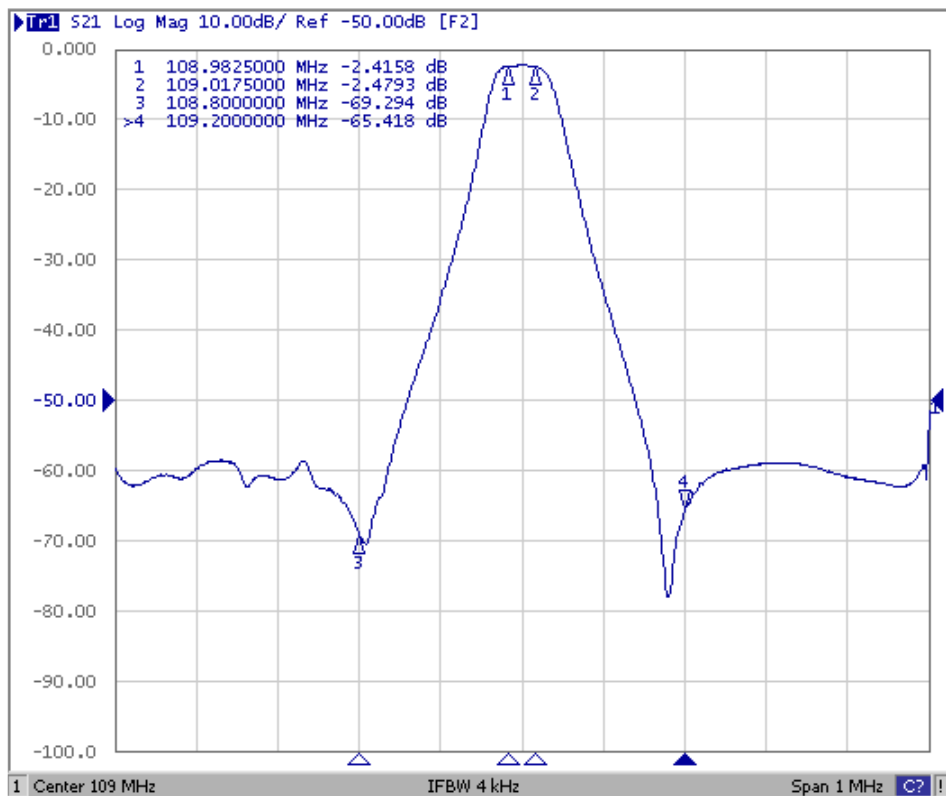
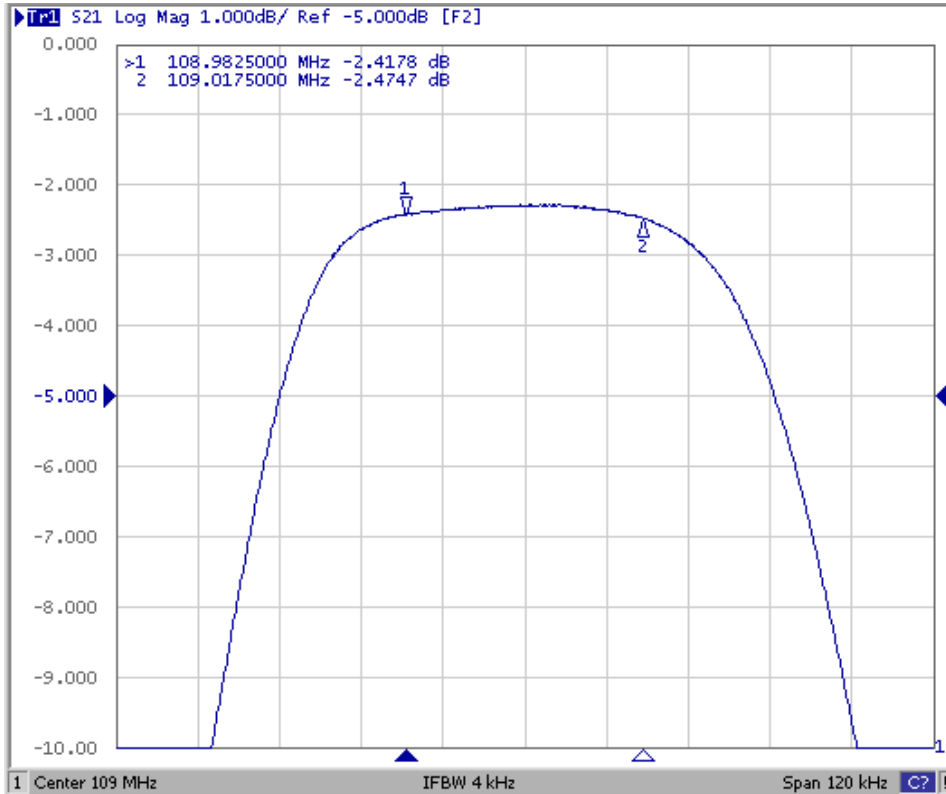


- B Input / Output
- G Output / Input
- A,C,D,E,F,H,J,K To be grounded

**SAW Filter 109MHz**  
**Part No: MP03228**

**Model: TB0768A**  
**Rev No: 1**

**E. FREQUENCY CHARACTERISTICS:**

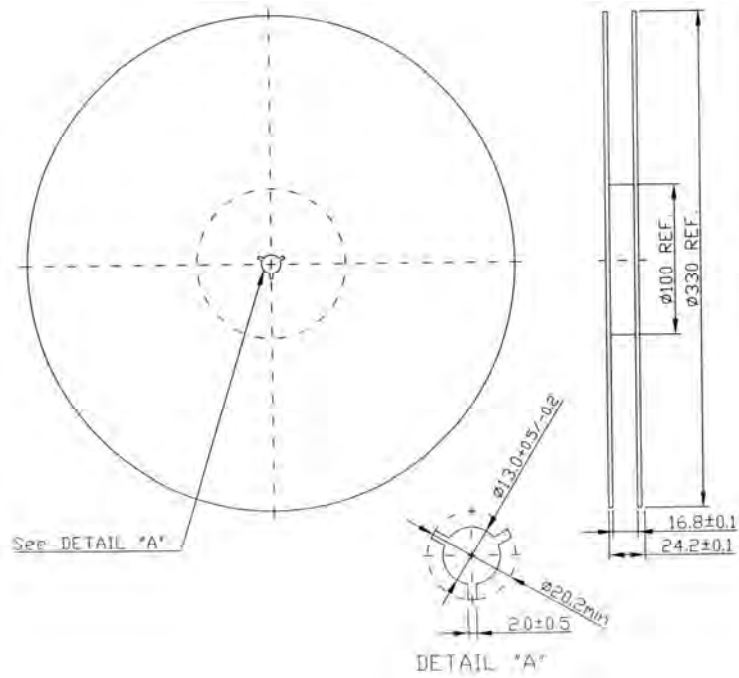


**SAW Filter 109MHz**  
**Part No: MP03228**

**Model: TB0768A**  
**Rev No: 1**

**F. PACKING:**

**1. REEL DIMENSION**



**2. TAPE DIMENSION**

