

SAW Filter 1680MHz
Part No: MP03273

Model: TA1078A
Rev No: 1

A. MAXIMUM RATING:

1. Input Power Level: 10dBm
2. DC Voltage: 3V
3. Operating Temperature: -40°C to +85°C
4. Storage Temperature: -50°C to +95°C

B. ELECTRICAL CHARACTERISTICS:

Terminating source impedance (balanced): $Z_S = 200\Omega // 18nH$

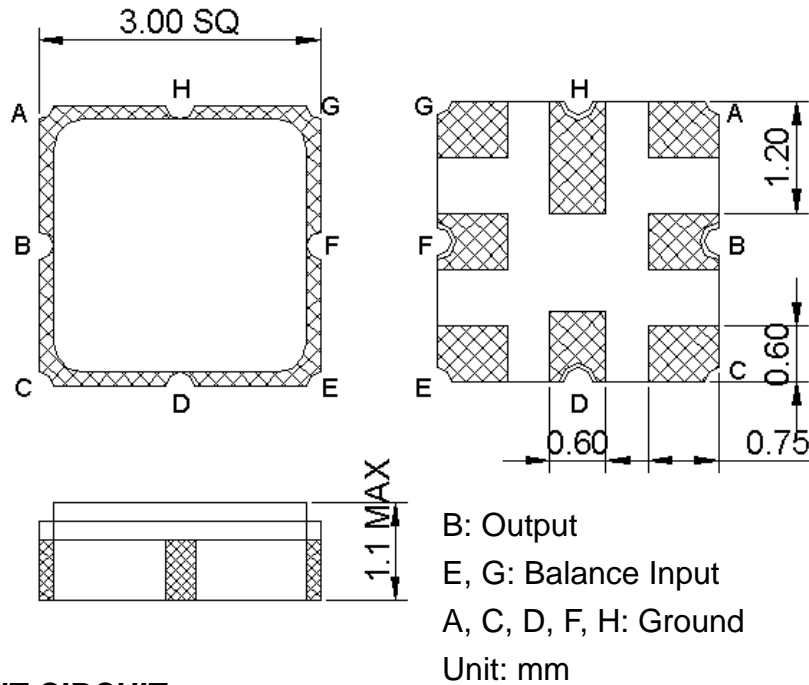
Terminating load impedance (single ended): $Z_L = 50\Omega$

Item	Unit	Min.	Typ.	Max.	Note
Center Frequency Fc	MHz	-	1680	-	-
Bandwidth at -2dB	MHz	60	78	-	-
Insertion Loss in 1650 ~ 1710MHz	dB	-	3.1	5	-
Amplitude ripple (1650MHz ~ 1710MHz)	dB	-	1	2	-
I/O VSWR (1650MHz ~ 1710MHz)		-	1.8	2.5	-
Attenuation (reference level from 0dB)					
50 ~ 1580MHz	dB	42	60	-	-
1800 ~ 3000MHz	dB	42	49	-	-
3000 ~ 4000MHz	dB	35	43	-	-
4000 ~ 6000MHz	dB	18	30	-	-

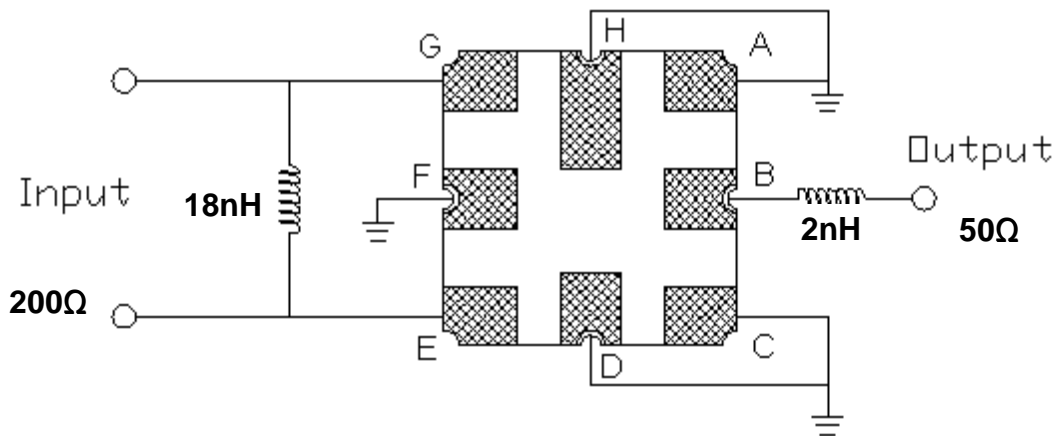
SAW Filter 1680MHz
Part No: MP03273

Model: TA1078A
Rev No: 1

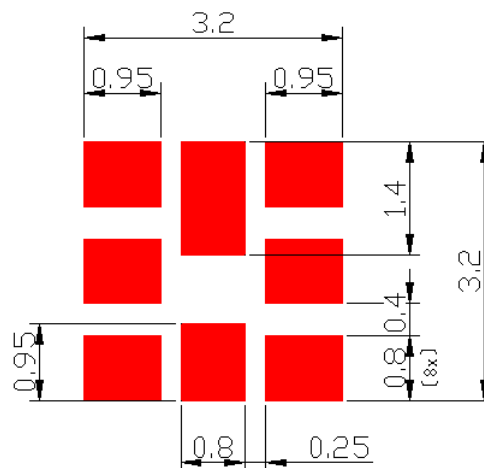
C. OUTLINE DRAWING:



D. MEASUREMENT CIRCUIT:



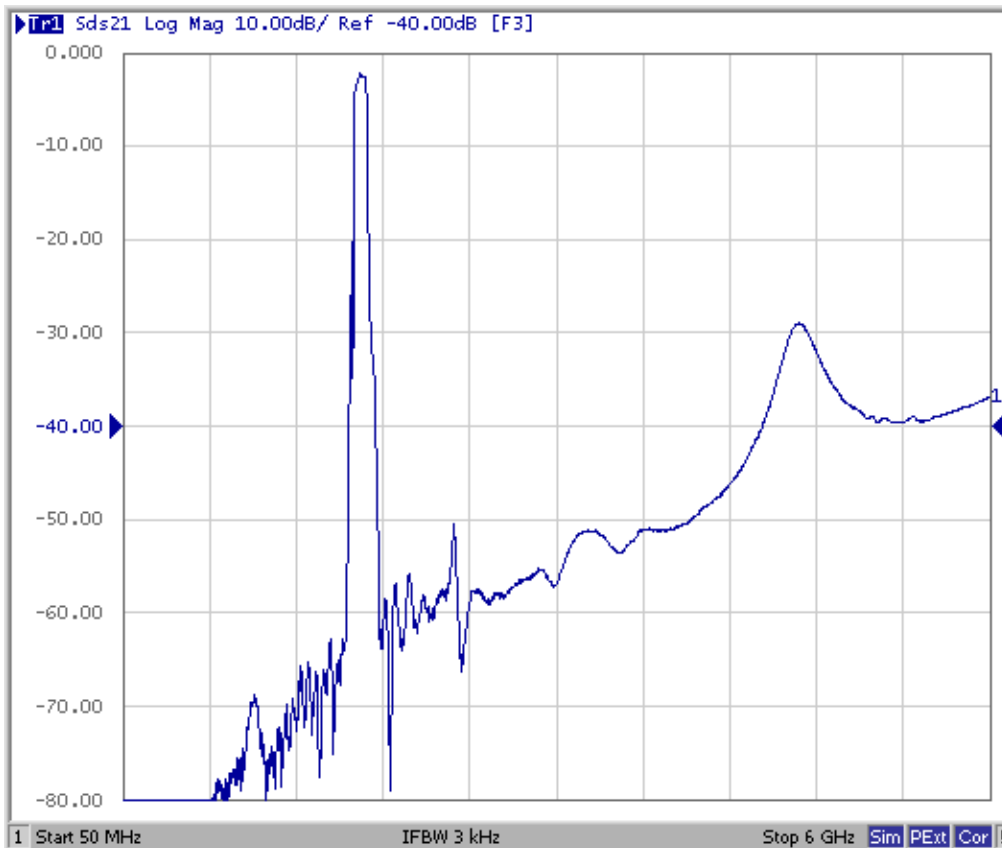
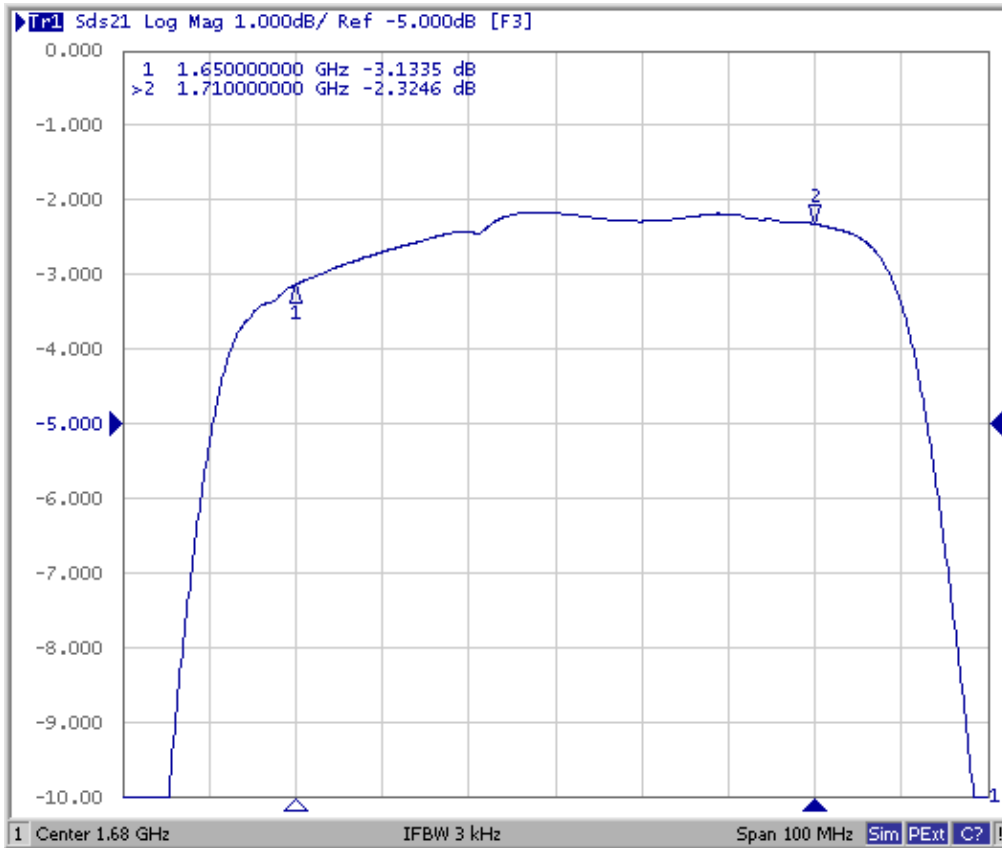
E. PCB FOOTPRINT:



SAW Filter 1680MHz
Part No: MP03273

Model: TA1078A
Rev No: 1

F. FREQUENCY CHARACTERISTICS:

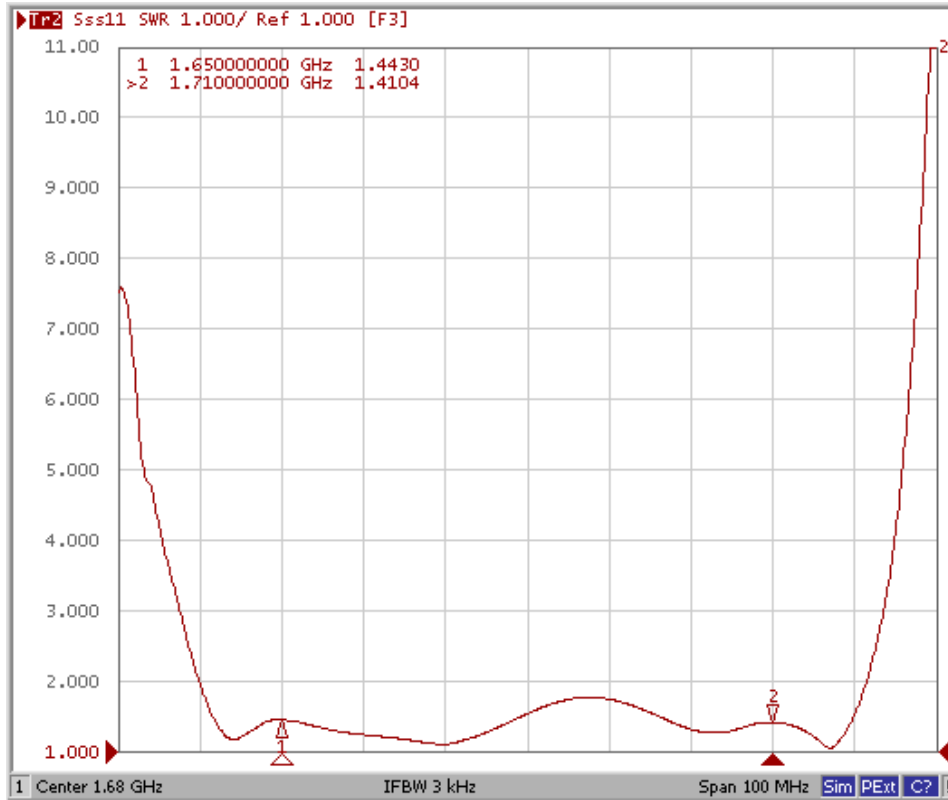


SAW Filter 1680MHz
Part No: MP03273

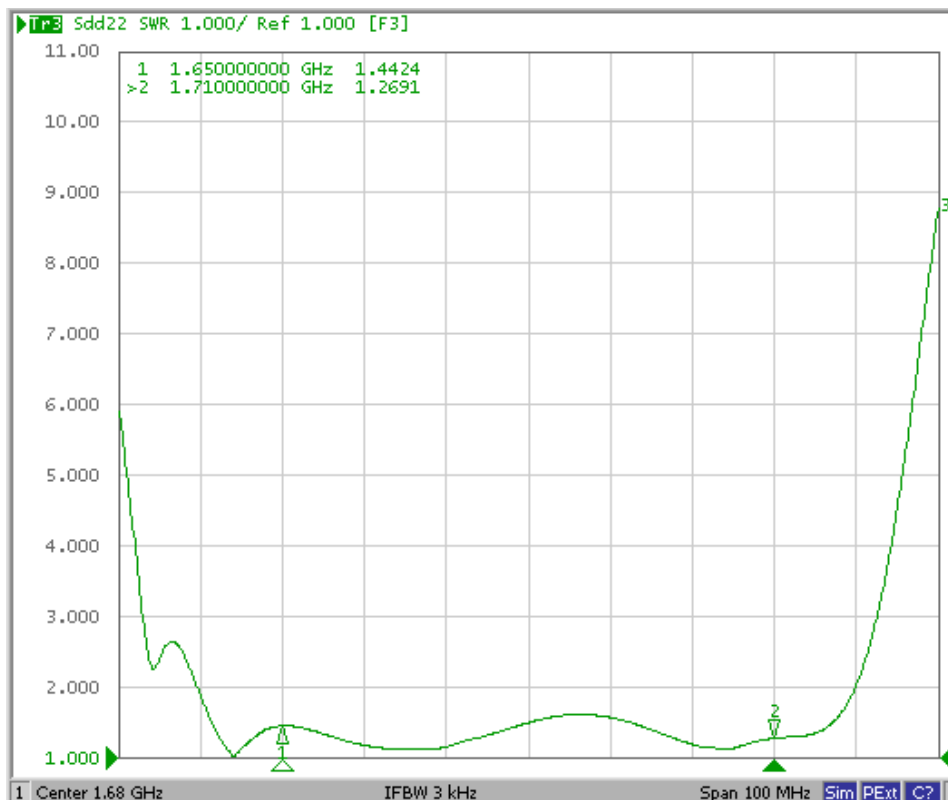
Model: TA1078A
Rev No: 1

Reflection Functions

S11



S22



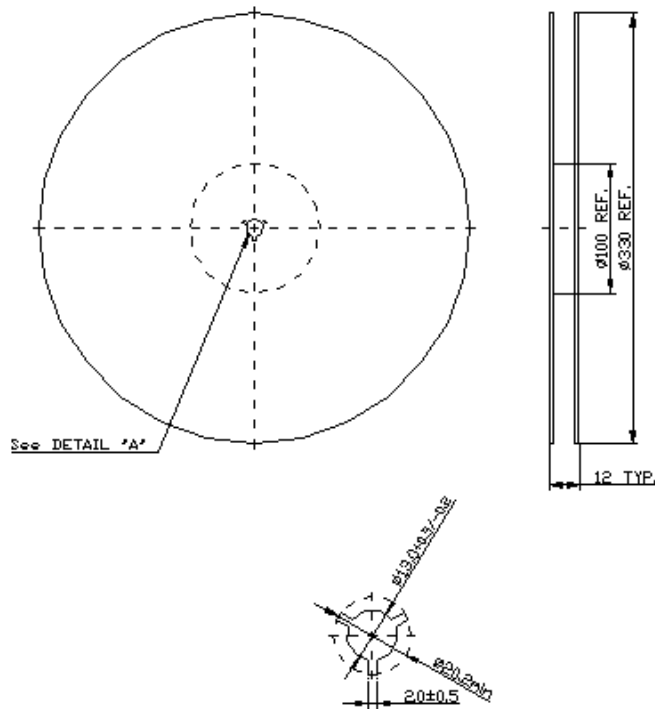
SAW Filter 1680MHz
Part No: MP03273

Model: TA1078A
Rev No: 1

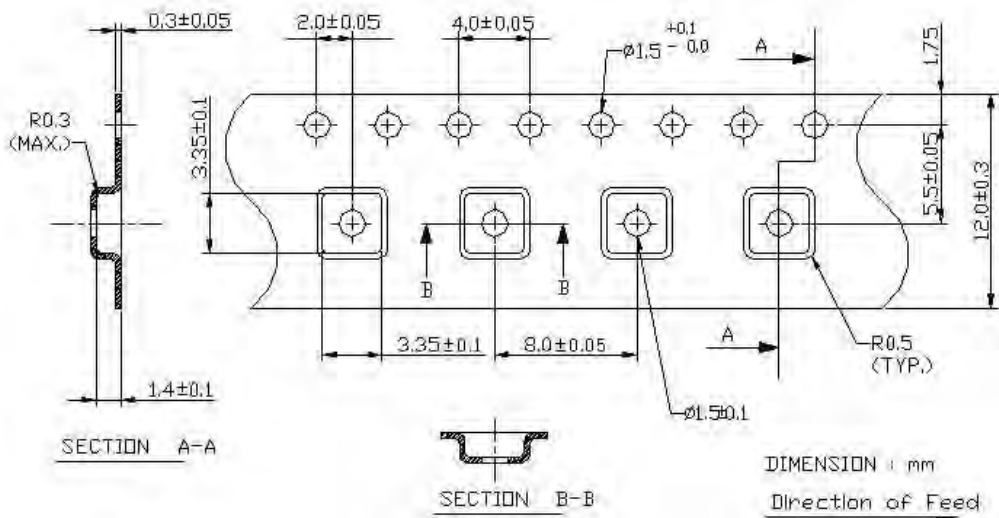
G. PACKING:

1. REEL DIMENSION

(Reel Count: 7" = 1000; 13" = 3000)



2. TAPE DIMENSION



SAW Filter 1680MHz
Part No: MP03273

Model: TA1078A
Rev No: 1

H. RECOMMENDED REFLOW PROFILE:

