

SAW Filter 60.0MHz
Part No: MP03387

Model: TB0634A
Rev No: 1

A. MAXIMUM RATING:

1. Operating Temperature: -40°C to +85°C
2. Storage Temperature: -40°C to +85°C
3. Input Power Level: 10dBm
4. Maximum DC Voltage: 10V

B. ELECTRICAL CHARACTERISTICS:

Ambient Temperature: 25°C

Item	Unit	Min.	Typ.	Max.
Center frequency Fc	MHz	-	60.0	-
Insertion Loss IL	dB	-	10.0	14.0
1dB Bandwidth	MHz	4.8	5.3	-
3dB Bandwidth	MHz	-	6.0	-
25dB Bandwidth	MHz		7.9	8.0
40dB Bandwidth	MHz		8.7	10.0
Pass band Ripple Fc ± 2.4MHz	P-P dB	-	0.6	1.2
VSWR Fc ± 2.4MHz	P-P dB		1.9	3.5
Group delay Variation Fc ± 2.4MHz	P-P nsec		120	200
Triple Transit Suppression	dB	40	43	
Power Handling	dBm	10		
Temp Coefficient	ppm/K	-	-23	-

SAW Filter 60.0MHz
Part No: MP03387

Model: TB0634A
Rev No: 1

C. FREQUENCY CHARACTERISTICS:

1. S21 Response

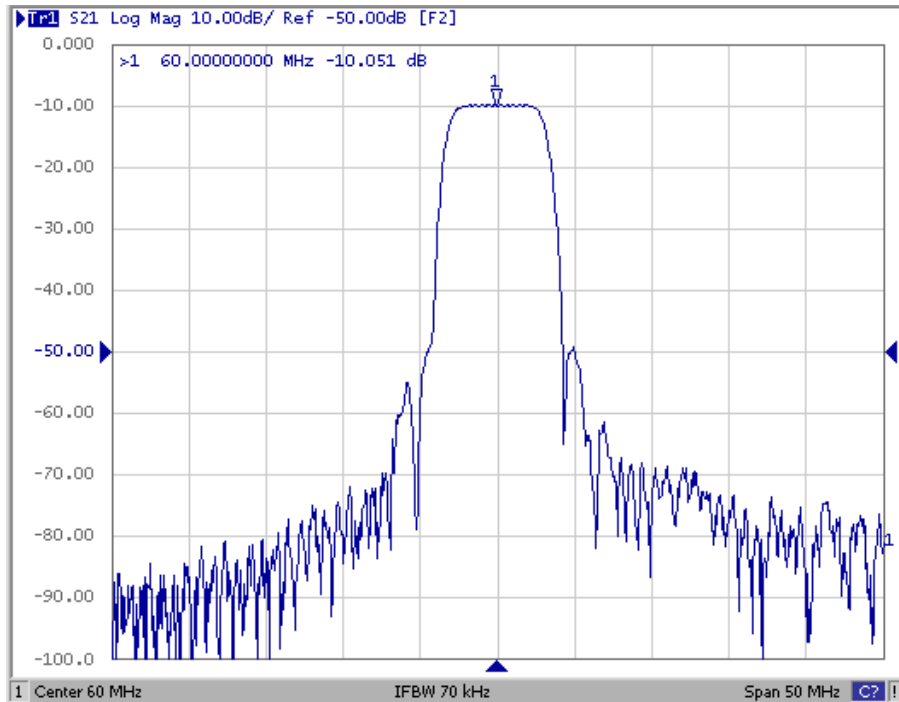


Fig. 1. Horizontal: 5MHz/Div, Vertical: 10dB/Div

2. Group-Delay Ripple

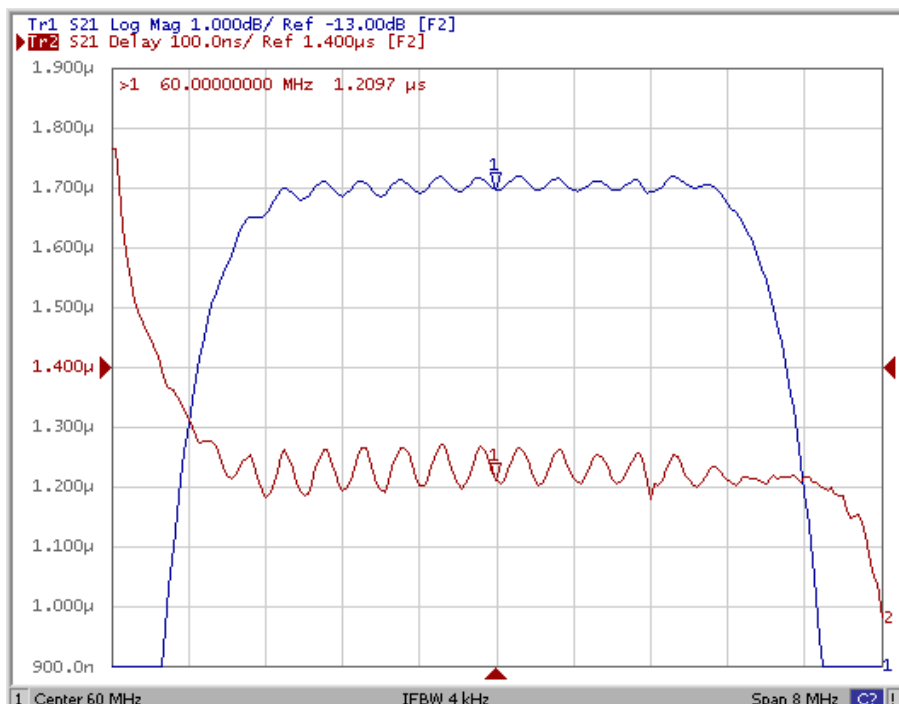
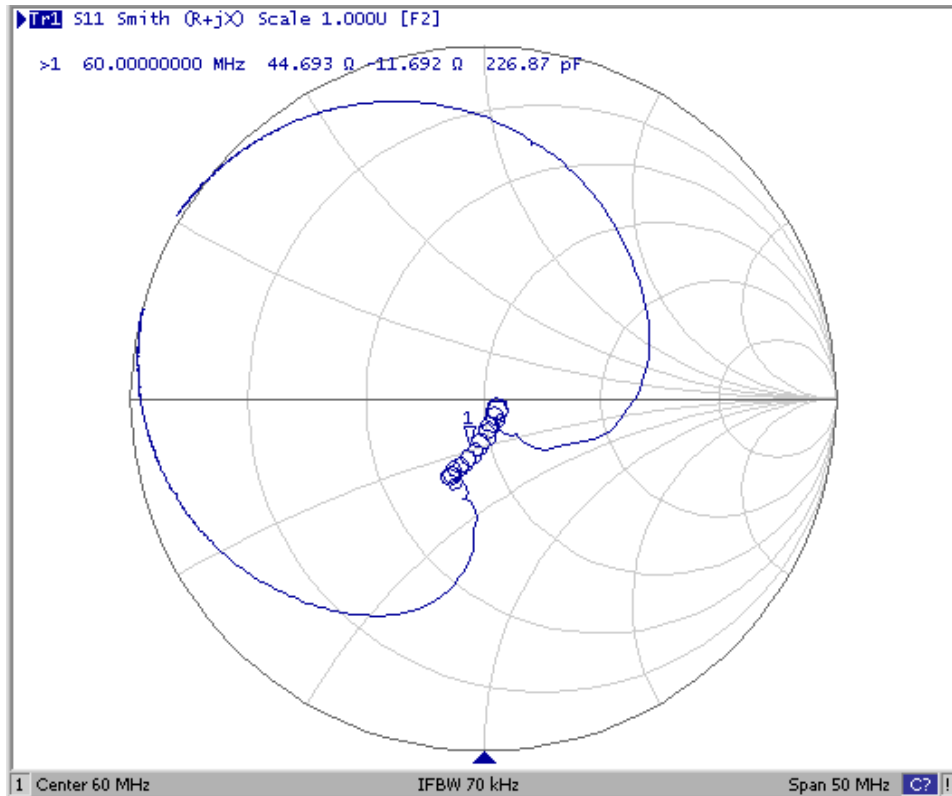


Fig. 2. Horizontal: 0.8MHz/Div, Vertical: 100nec/Div

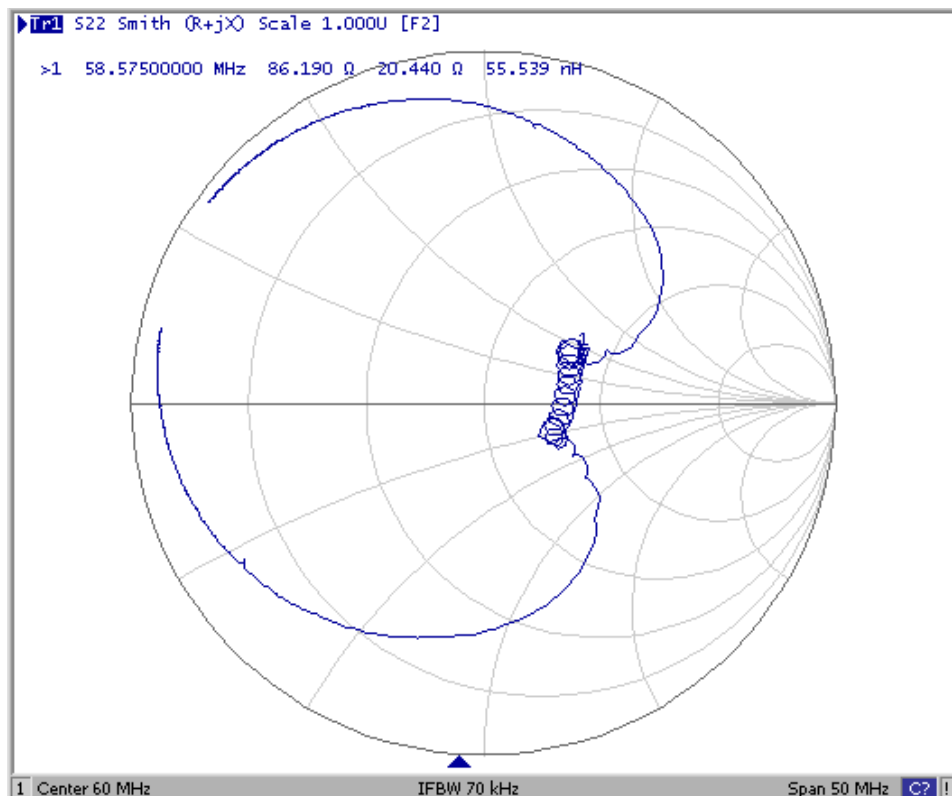
SAW Filter 60.0MHz
Part No: MP03387

Model: TB0634A
Rev No: 1

3. S11 Smith Chart (span: 50MHz)



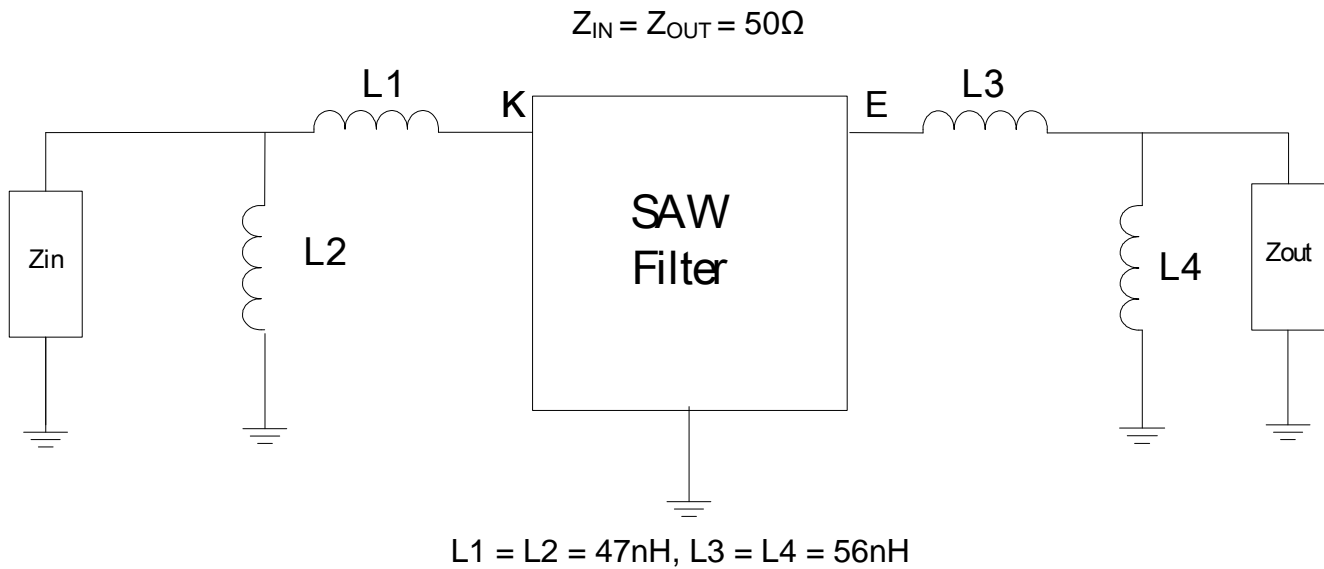
4. S22 Smith Chart (span: 50MHz)



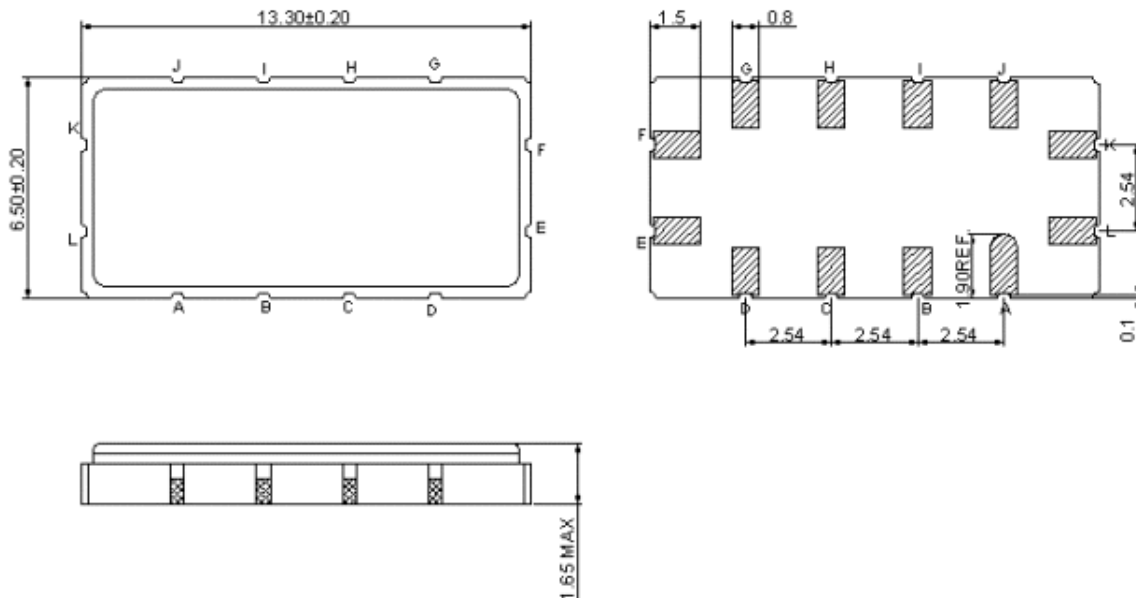
SAW Filter 60.0MHz
Part No: MP03387

Model: TB0634A
Rev No: 1

D. MEASUREMENT CIRCUIT:



E. OUTLINE DRAWING:

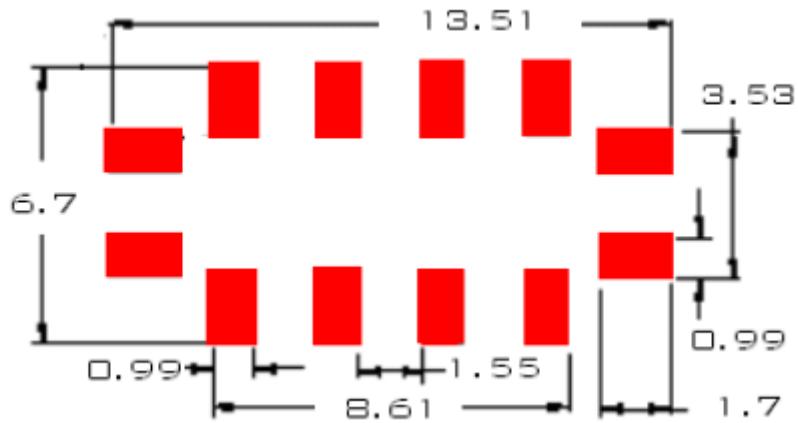


K: RF input
 E: RF output
 A, B, C, D, G, H, I, L, F J: To be Ground
 Unit: mm

SAW Filter 60.0MHz
Part No: MP03387

Model: TB0634A
Rev No: 1

F. PCB FOOTPRINT:

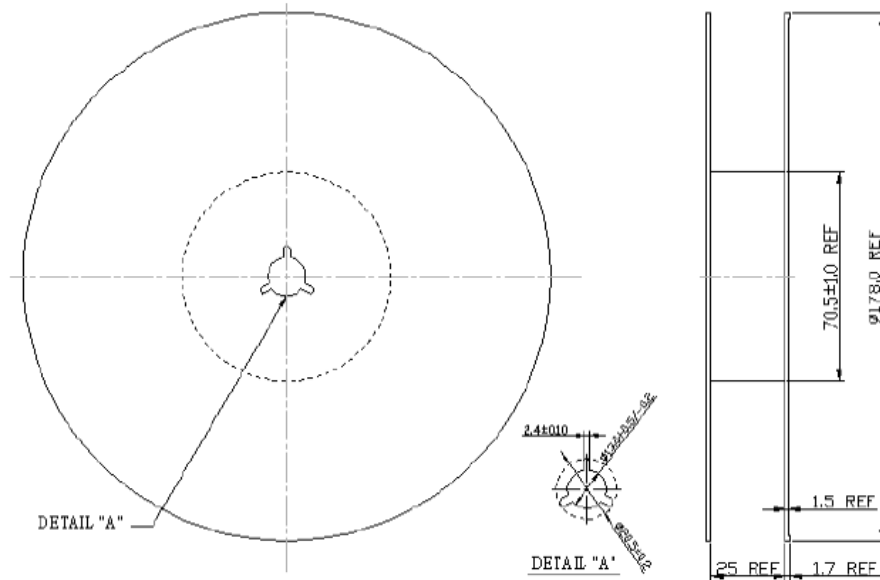


SAW Filter 60.0MHz
Part No: MP03387

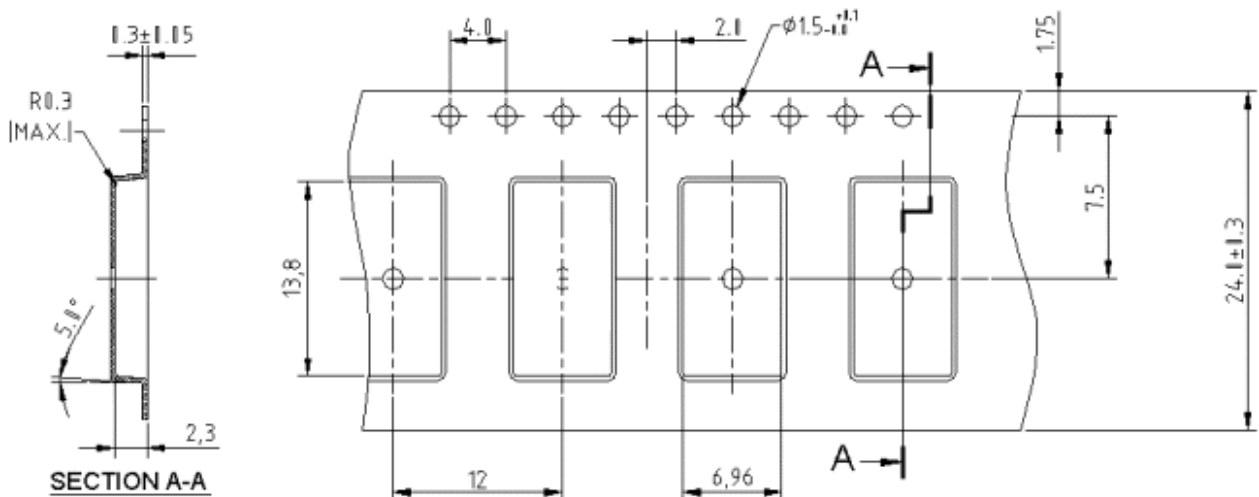
Model: TB0634A
Rev No: 1

G. PACKING:

1. REEL DIMENSION



2. TAPE DIMENSION



SAW Filter 60.0MHz
Part No: MP03387

Model: TB0634A
Rev No: 1

H. RECOMMENDED REFLOW PROFILE:

