

SAW Filter 60.0MHz
Part No: MP03407

Model: TB0636A
Rev No: 1

A. MAXIMUM RATING:

1. Operating Temperature: -40°C to +85°C
2. Storage Temperature: -40°C to +85°C
3. Input Power Level: 10dBm
4. Maximum DC Voltage: 10V

B. ELECTRICAL CHARACTERISTICS:

Ambient Temperature: 25°C

Item	Unit	Min.	Typ.	Max.
Center frequency Fc	MHz	-	60.0	-
Insertion Loss IL	dB	-	15.0	18.5
1dB Bandwidth	MHz	20.0	21.7	-
3dB Bandwidth	MHz	-	22.5	-
25dB Bandwidth	MHz		25.5	30.0
40dB Bandwidth	MHz		26.8	31.0
Pass band Ripple Fc ± 10.0MHz	P-P dB	-	0.6	1.2
VSWR Fc ± 10.0MHz	P-P dB		6.5	7.0
Group delay Variation Fc ± 10MHz	P-P nsec		30	100
Triple Transit Suppression	dB	40	43	
Power Handling	dBm	10		
Temp Coefficient	ppm/K	-	-23	-

SAW Filter 60.0MHz
Part No: MP03407

Model: TB0636A
Rev No: 1

C. FREQUENCY CHARACTERISTICS:

1. S21 Response: (span: 70MHz)

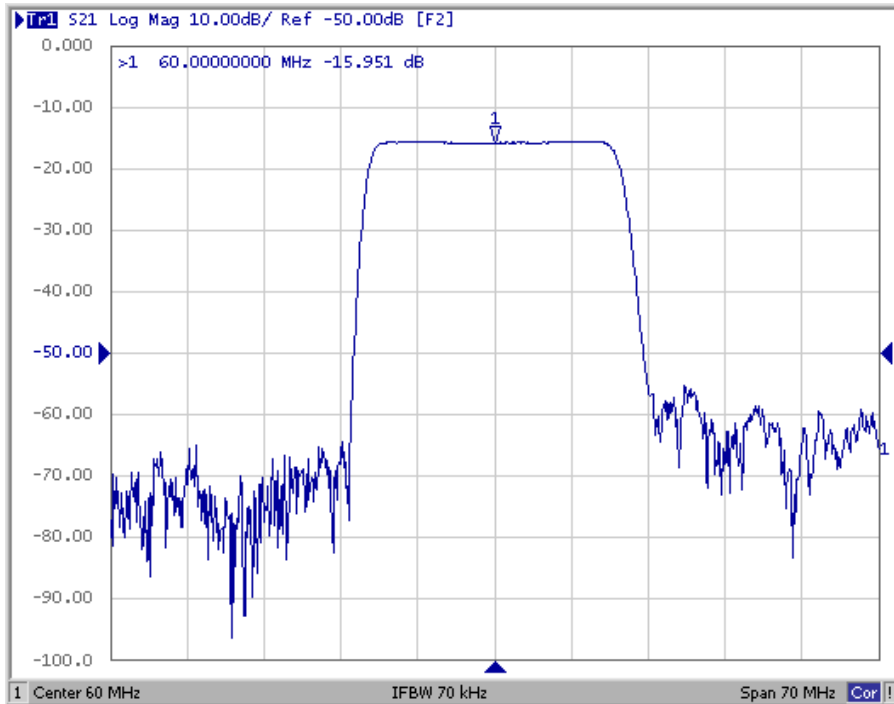


Fig. 1. Horizontal: 7MHz/Div, Vertical: 10dB/Div

2. Group-Delay Ripple: (span: 30MHz)

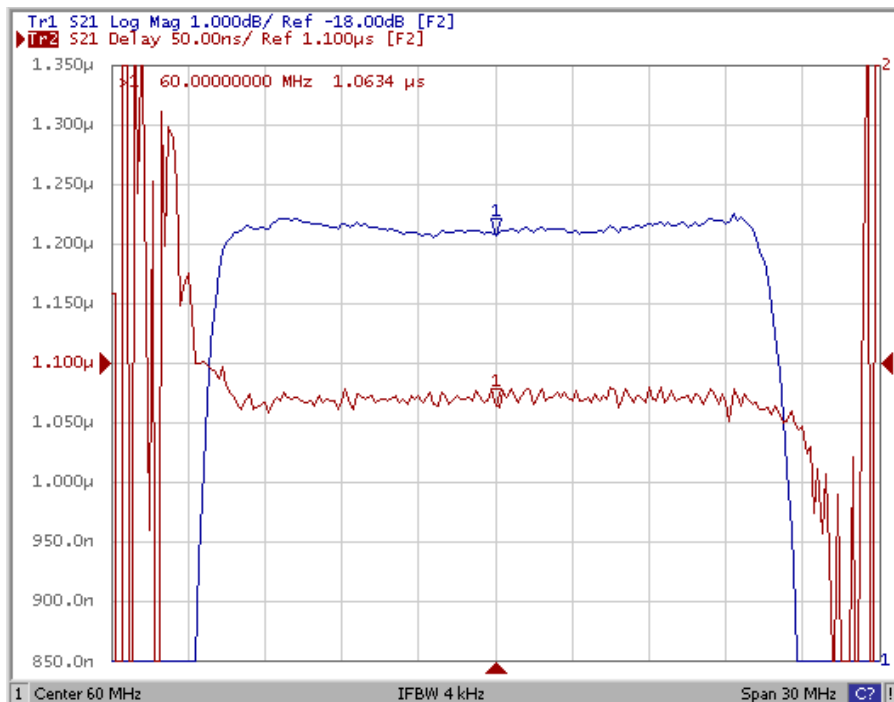
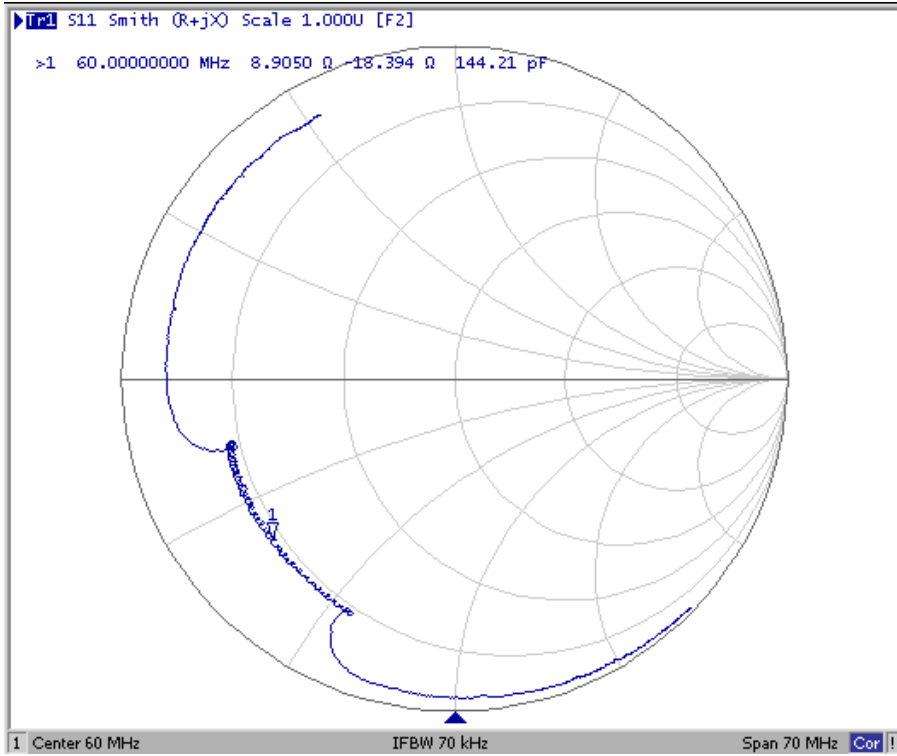


Fig. 2. Horizontal: 3.0MHz/Div, Vertical: 50nec/Div

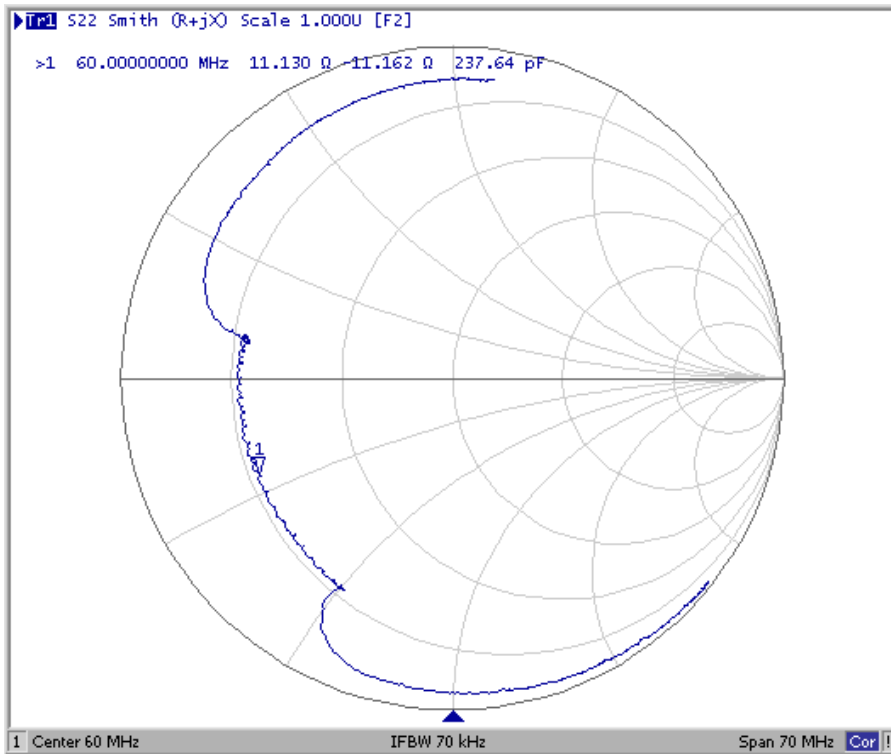
SAW Filter 60.0MHz
Part No: MP03407

Model: TB0636A
Rev No: 1

3. S11 Smith Chart: (span: 70MHz)



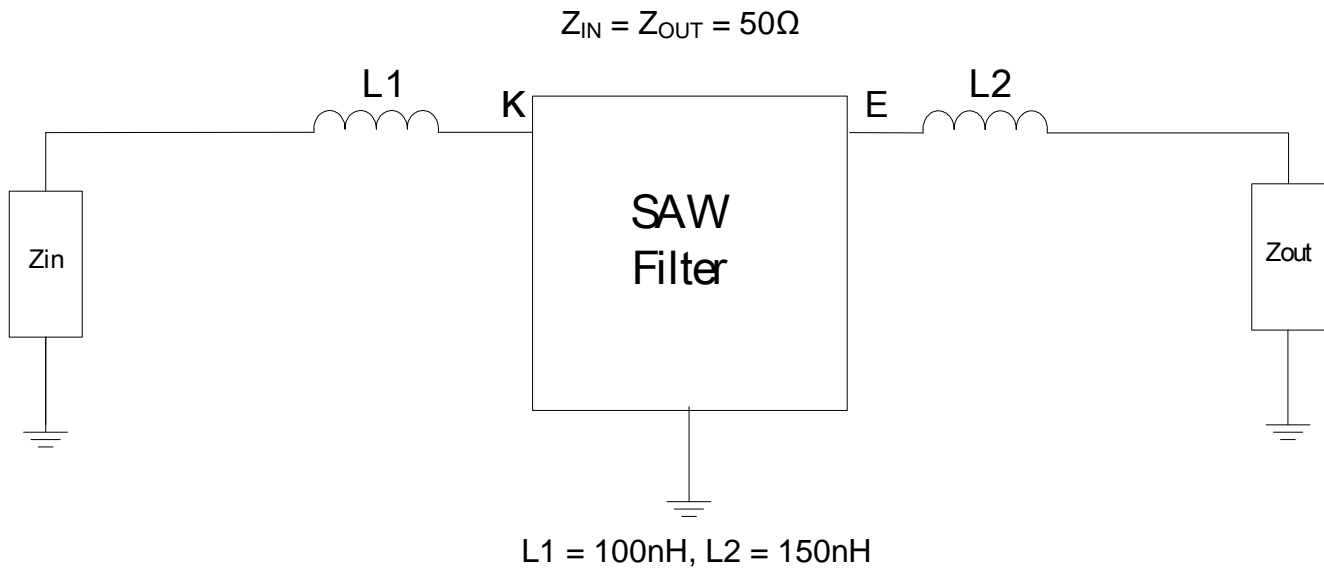
4. S22 Smith Chart (span: 70MHz)



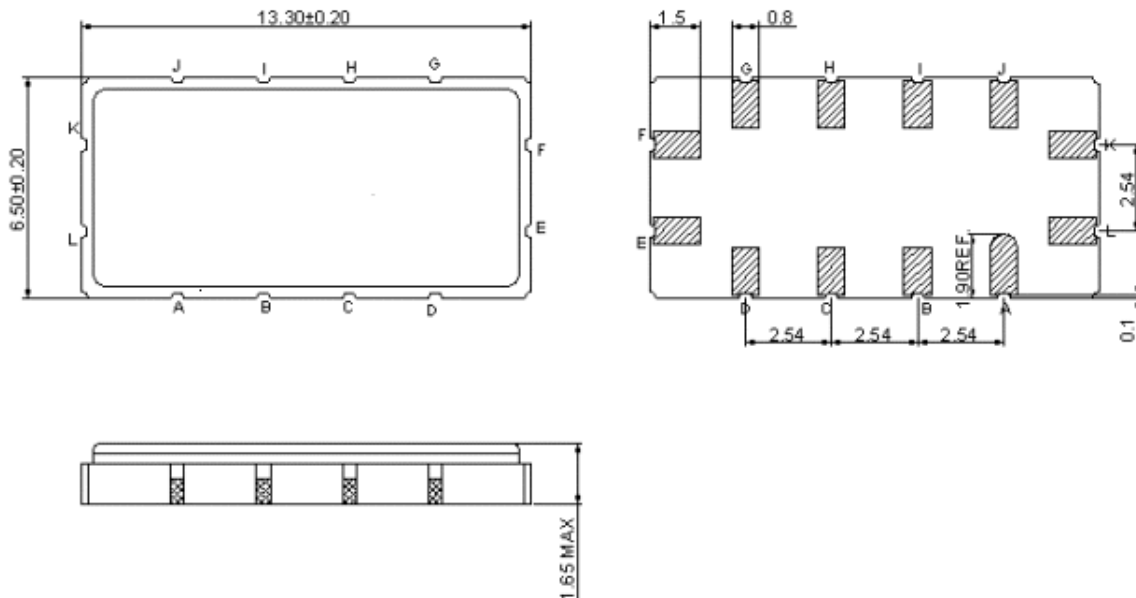
SAW Filter 60.0MHz
Part No: MP03407

Model: TB0636A
Rev No: 1

D. MEASUREMENT CIRCUIT:



E. OUTLINE DRAWING:

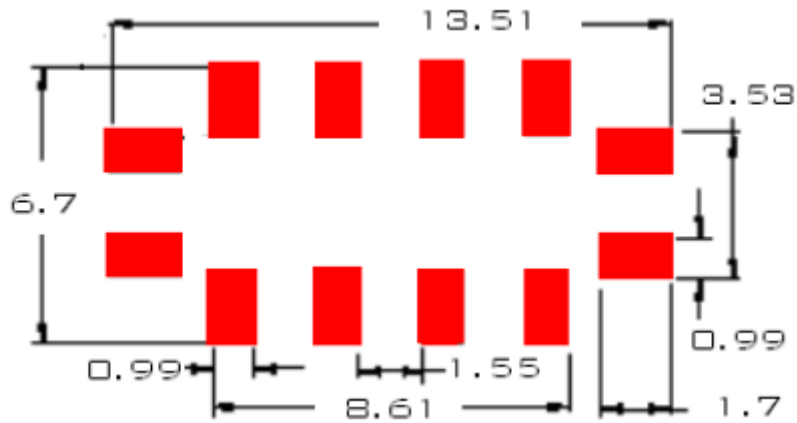


K: RF input
 E: RF output
 A, B, C, D, G, H, I, L, F J: To be Ground
 Unit: mm

SAW Filter 60.0MHz
Part No: MP03407

Model: TB0636A
Rev No: 1

F. PCB FOOTPRINT:

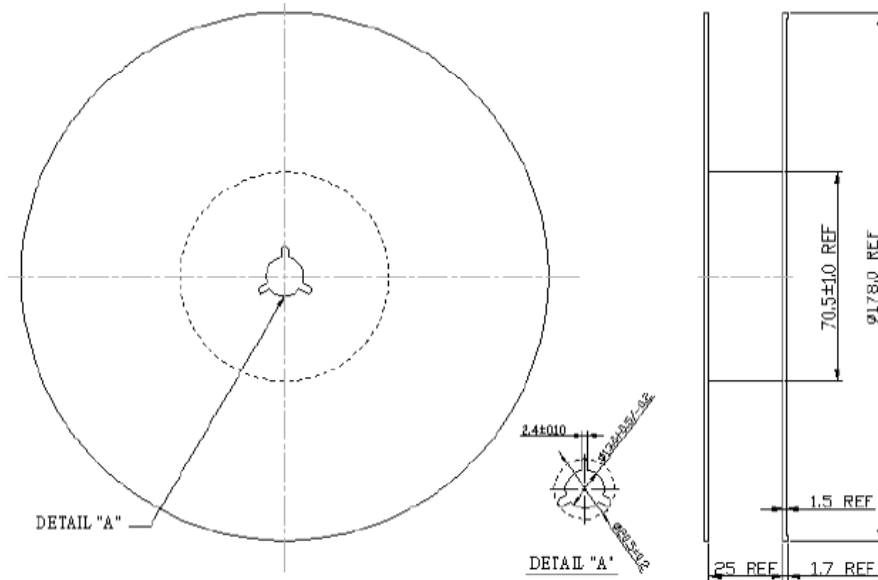


SAW Filter 60.0MHz
Part No: MP03407

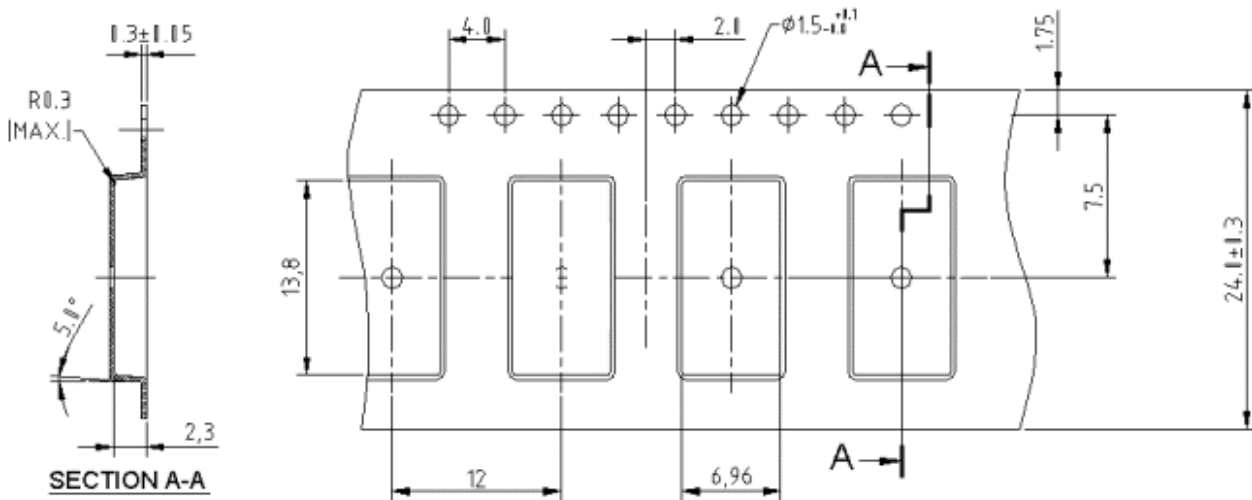
Model: TB0636A
Rev No: 1

G. PACKING:

1. REEL DIMENSION



2. TAPE DIMENSION



SAW Filter 60.0MHz
Part No: MP03407

Model: TB0636A
Rev No: 1

H. RECOMMENDED REFLOW PROFILE:

