

**SAW Filter 79.0MHz**  
**Part No: MP03430**

**Model: TB0753A**  
**Rev No: 1**

**A. MAXIMUM RATING:**

1. Operating Temperature: -20°C ~ +80°C
2. Storage Temperature: -40°C ~ +85°C
3. Input power: 10dBm

**B. CHARACTERISTICS:**

Ambient Temperature: 25°C

Characteristics	Value			Note
	Min.	Typ.	Max.	
Center frequency Fc MHz	-	79.0	-	-
Minimum Insertion loss IL 72.5MHz ~ 85.5MHz dB	-	9.8	15.0	-
Passband Ripple 72.5MHz ~ 85.5MHz dB	-	0.7	1.5	-
Attenuation 10MHz ~ 62MHz dB	40	52	-	-
92MHz ~ 200MHz dB	40	47	-	-
Substrate Material	YZ-LiNbO3			-
Temp Coefficient ppm/K	-	-94	-	-
Matching: 1. The input of the filter will be matched to 50Ω 2. The output of the filter will be matched to 50Ω				

**SAW Filter 79.0MHz**  
**Part No: MP03430**

**Model: TB0753A**  
**Rev No: 1**

**C. FREQUENCY CHARACTERISTICS:**

1. S21 Response: (span: 100MHz)

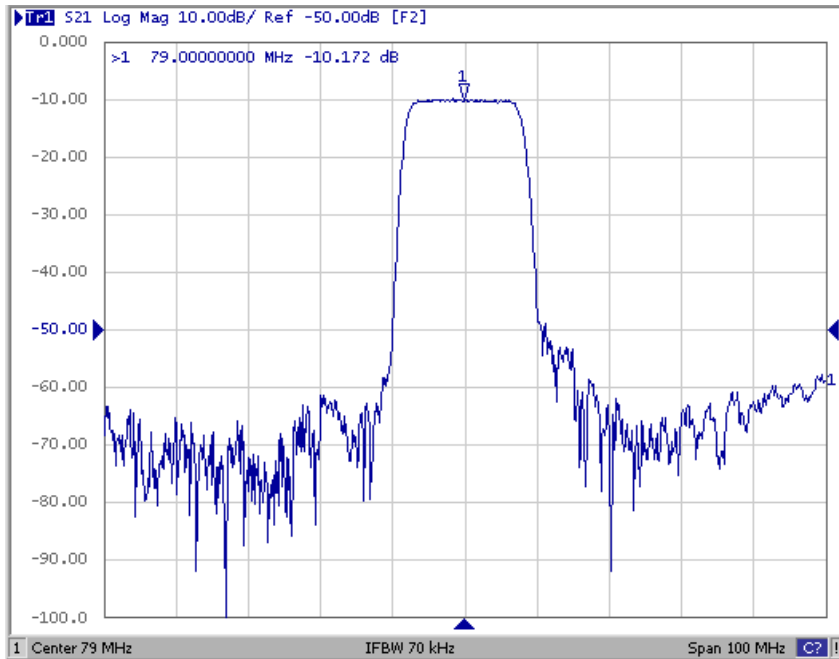


Fig. 1. Horizontal: 10MHz/Div, Vertical: 10dB/Div

2. Group-Delay Ripple: (span: 20MHz)

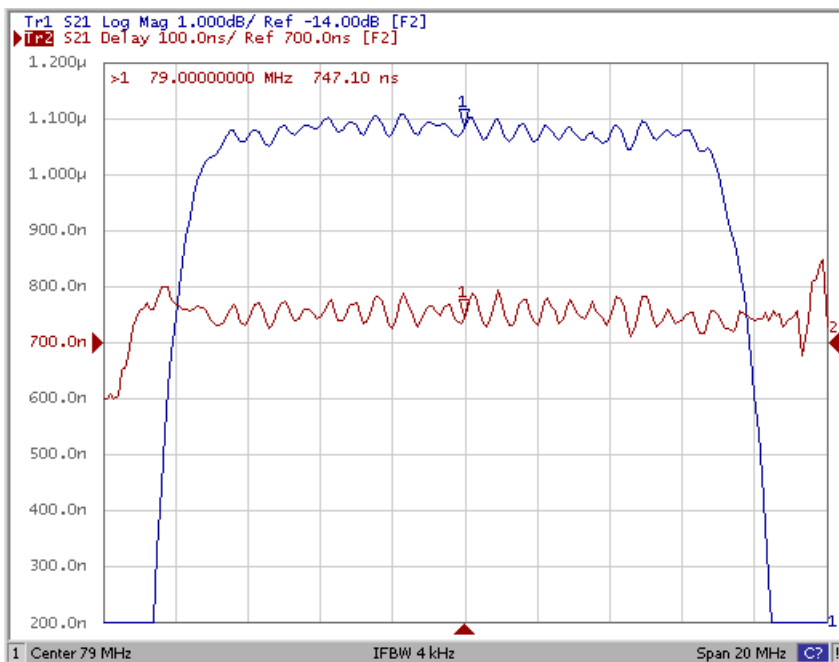
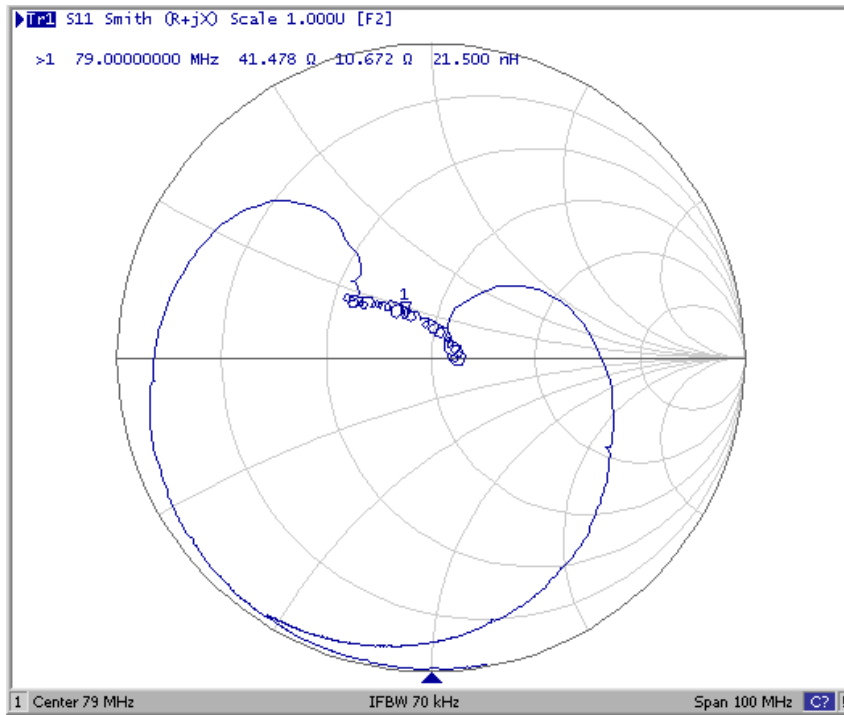


Fig. 2. Horizontal: 2.0MHz/Div, Vertical: 100nec/Div

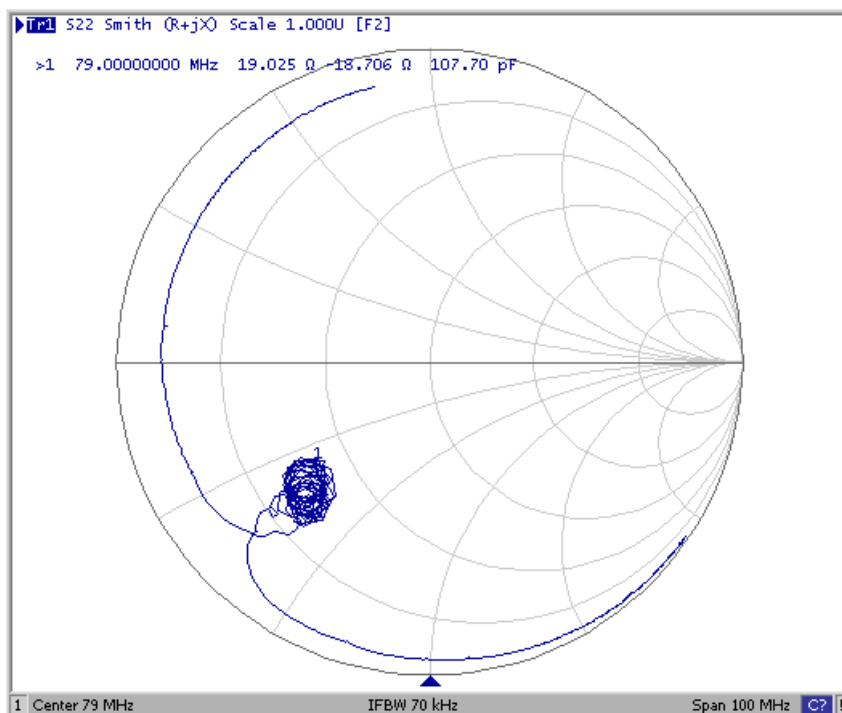
**SAW Filter 79.0MHz**  
**Part No: MP03430**

**Model: TB0753A**  
**Rev No: 1**

3. S11 Smith Chart: (span: 100MHz)



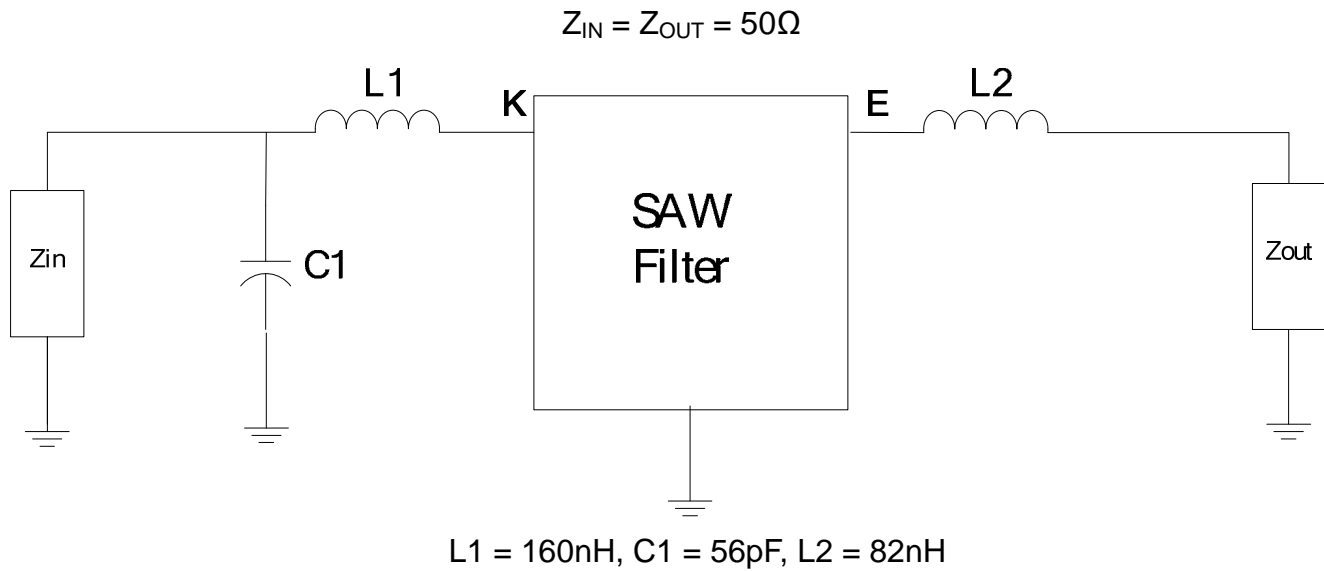
4. S22 Smith Chart (span: 100MHz)



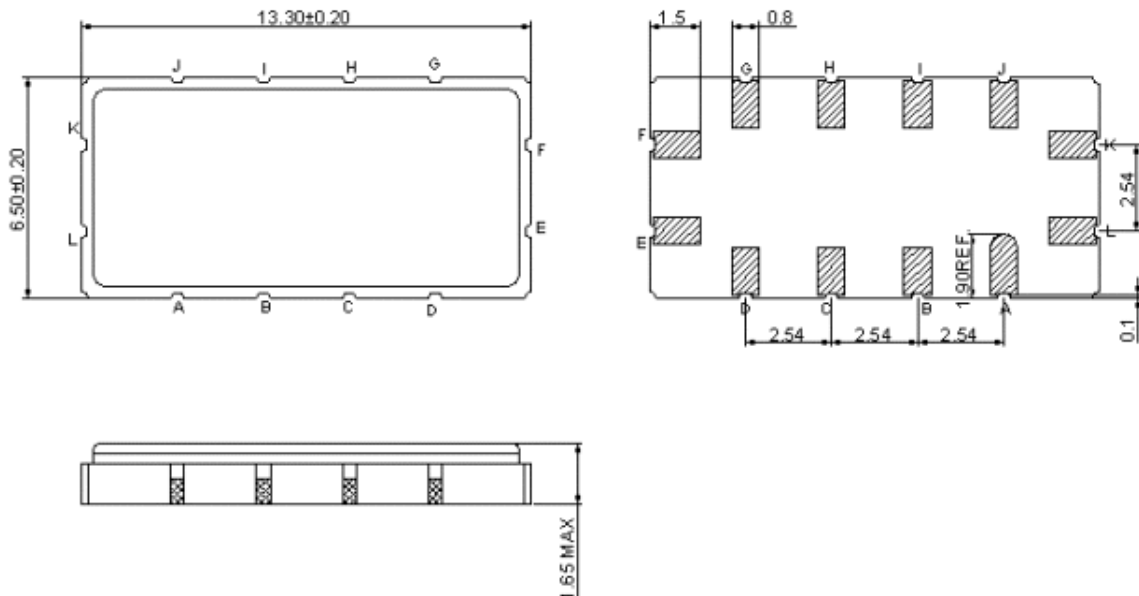
**SAW Filter 79.0MHz**  
**Part No: MP03430**

**Model: TB0753A**  
**Rev No: 1**

**D. MEASUREMENT CIRCUIT:**



**E. OUTLINE DRAWING:**



K: RF input  
 E: RF output  
 A, B, C, D, G, H, I, L, F J: To be Ground  
 Unit: mm

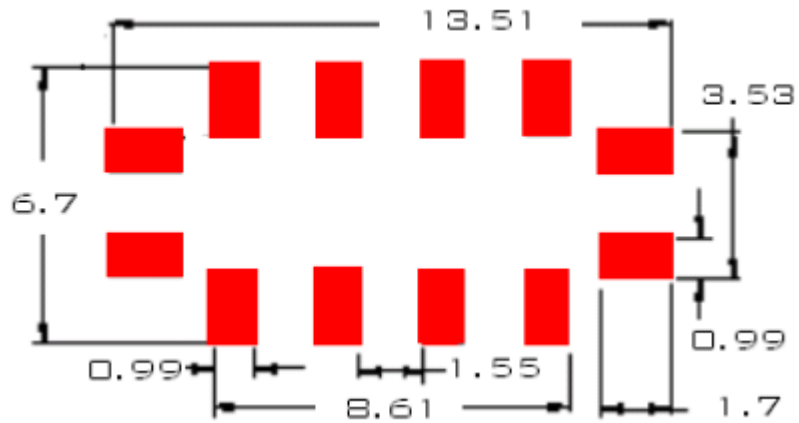
---

**SAW Filter 79.0MHz**  
**Part No: MP03430**

**Model: TB0753A**  
**Rev No: 1**

---

**F. PCB FOOTPRINT:**

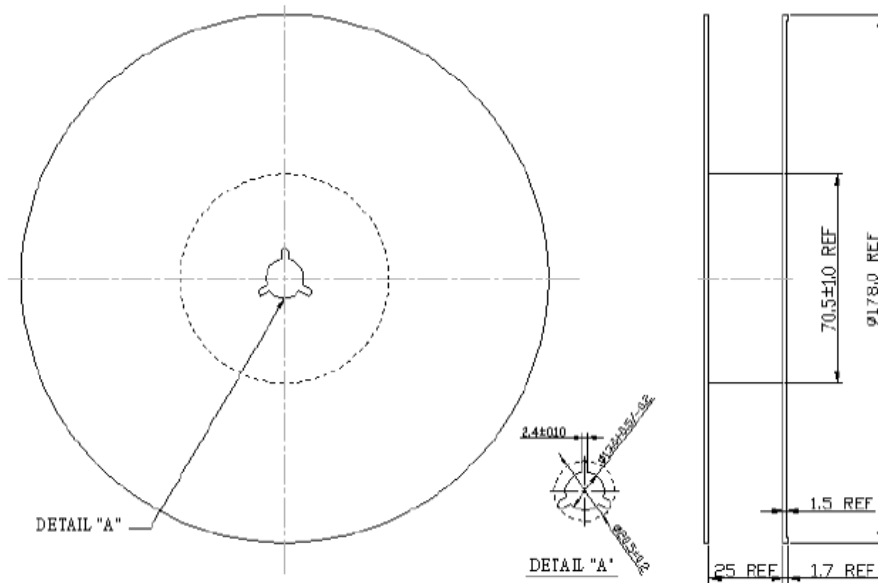


**SAW Filter 79.0MHz**  
**Part No: MP03430**

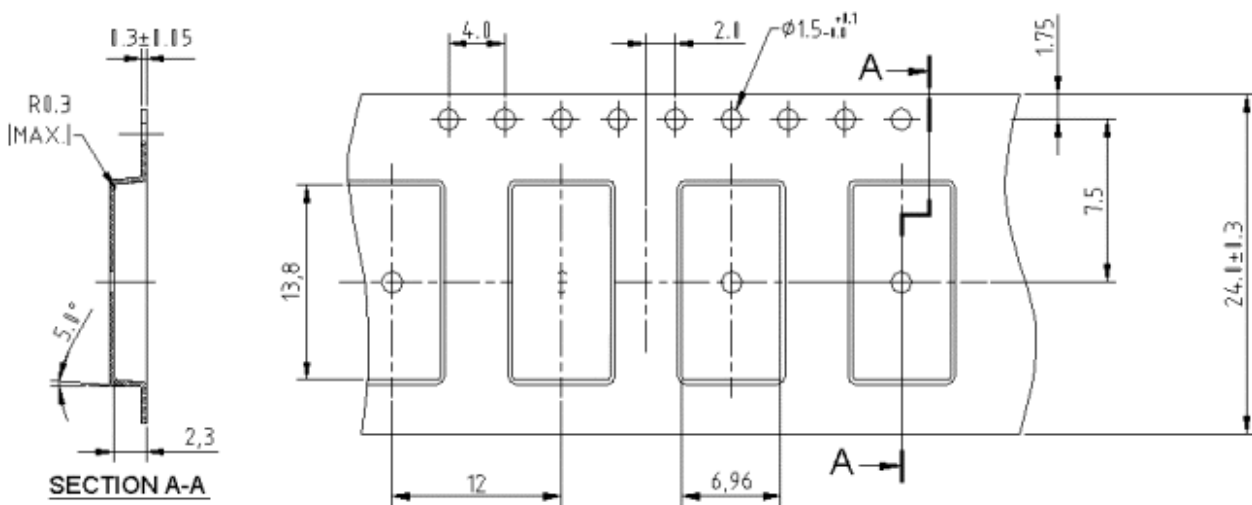
**Model: TB0753A**  
**Rev No: 1**

**G. PACKING:**

**1. REEL DIMENSION**



**2. TAPE DIMENSION**



**SAW Filter 79.0MHz**  
**Part No: MP03430**

**Model: TB0753A**  
**Rev No: 1**

**H. RECOMMENDED REFLOW PROFILE:**

