

SAW Filter 120.0MHz
Part No: MP03441

Model: TB0763A
Rev No: 1

A. MAXIMUM RATING:

1. Operating Temperature: -20°C ~ +80°C
2. Storage Temperature: -40°C ~ +85°C
3. Input power: 10dBm

B. CHARACTERISTICS:

Ambient Temperature: 25°C

Characteristics	Value			Note
	Min.	Typ.	Max.	
Center frequency Fc MHz	-	120.0	-	-
Minimum Insertion loss IL dB	-	17.0	20.0	-
1.5dB BW MHz	15.0	17	-	
Rejection at Fc ± 13MHz MHz	40.0	46.0	-	
Passband Ripple Fc ± 7.5MHz dB	-	0.85	1.0	-
Group-Delay Ripple Fc ± 7.5MHz nsec	-	100	120	-
Phase Linearity Fc ± 7.5MHz p-p deg	-	11	13	
Rejection				
10 ~ 100MHz dB c	45	52	-	-
140 ~ 180MHz dB c	40	47	-	-
Temp Coefficient ppm/K	-	-94	-	-
Matching: <ol style="list-style-type: none"> 1. The input of the filter will be matched to 50Ω 2. The output of the filter will be matched to 50Ω 				

SAW Filter 120.0MHz
Part No: MP03441

Model: TB0763A
Rev No: 1

C. FREQUENCY CHARACTERISTICS:

1. S21 Response: (span: 100MHz)

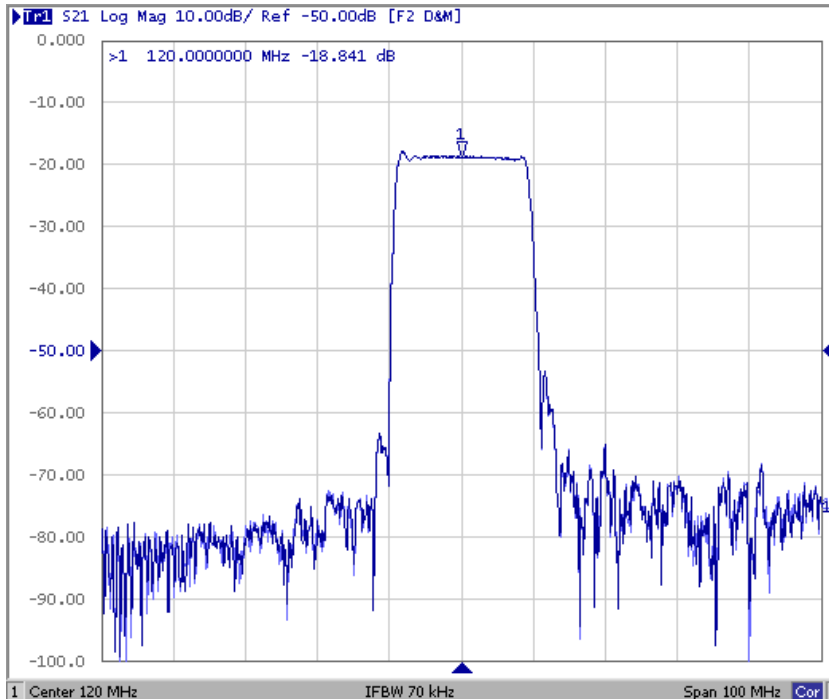


Fig. 1. Horizontal: 10MHz/Div, Vertical: 10dB/Div

2. Group - Delay Ripple: (span: 30MHz)

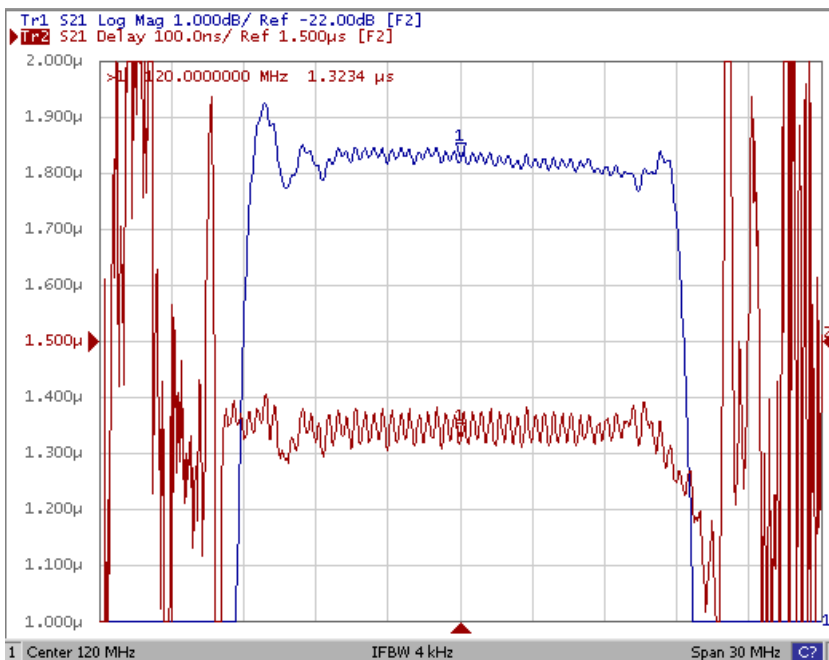
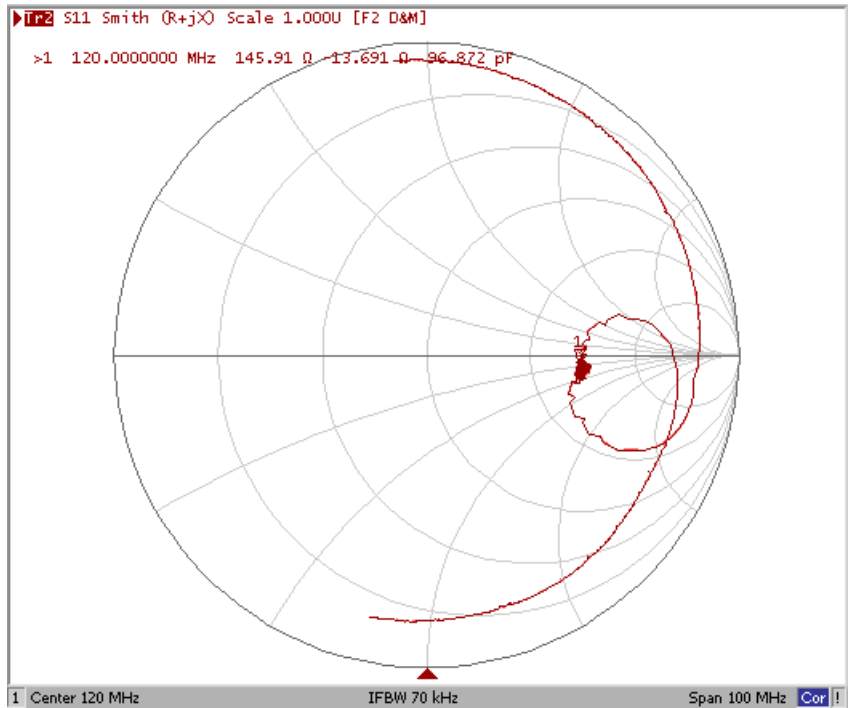


Fig. 2. Horizontal: 3MHz/Div, Vertical: 100ns

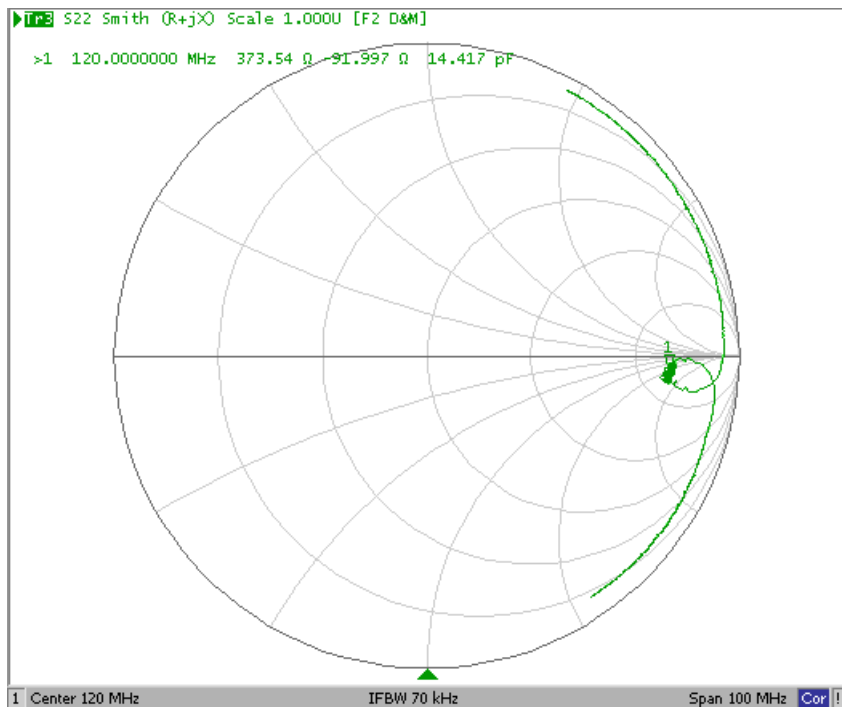
SAW Filter 120.0MHz
Part No: MP03441

Model: TB0763A
Rev No: 1

3. S11 Smith Chart: (span: 100MHz)



4. S22 Smith Chart (span: 100MHz)

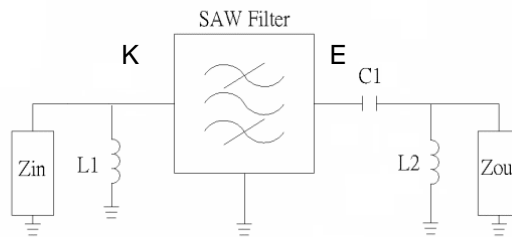


SAW Filter 120.0MHz
Part No: MP03441

Model: TB0763A
Rev No: 1

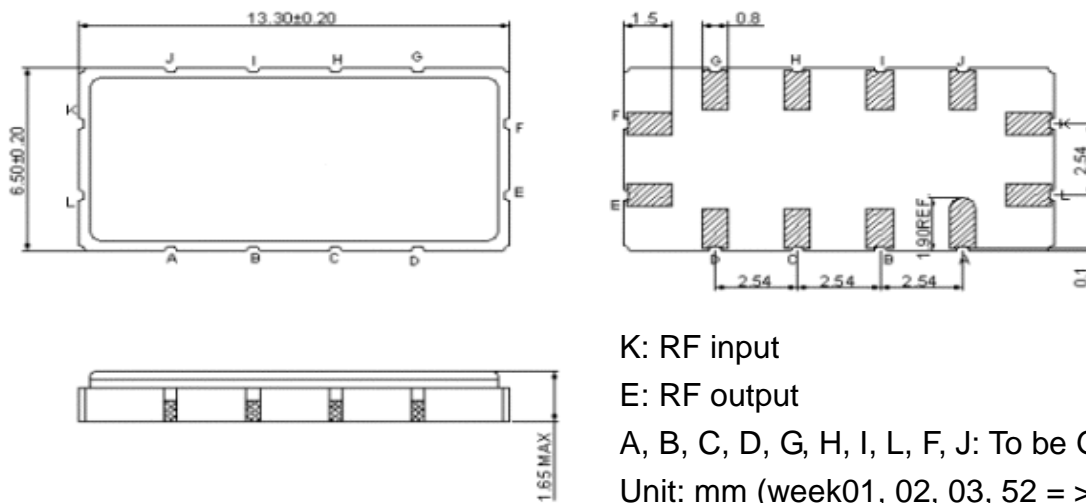
D. MEASUREMENT CIRCUIT:

Matching Circuit

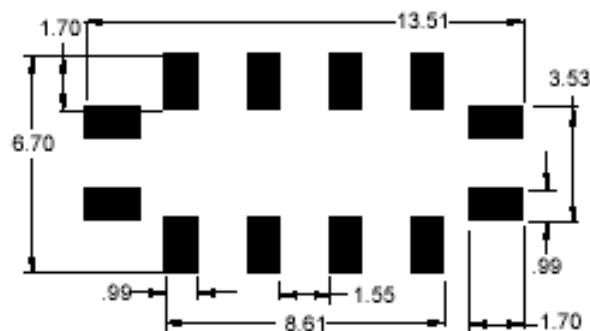


Z_{in} and Z_{out} are 50 Ω.
 L1=68 nH, C1=82 pF, L2= 120nH

E. OUTLINE DRAWING:



F. PCB FOOTPRINT:

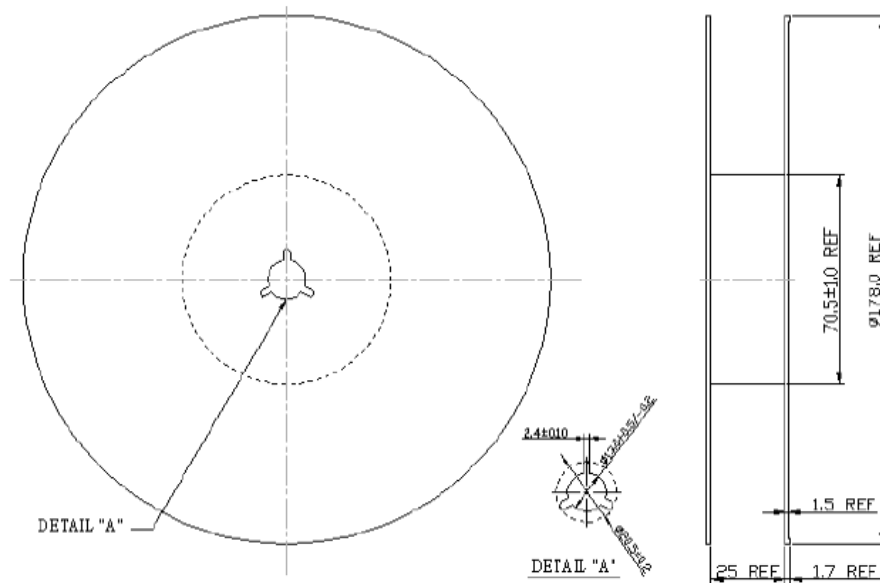


SAW Filter 120.0MHz
Part No: MP03441

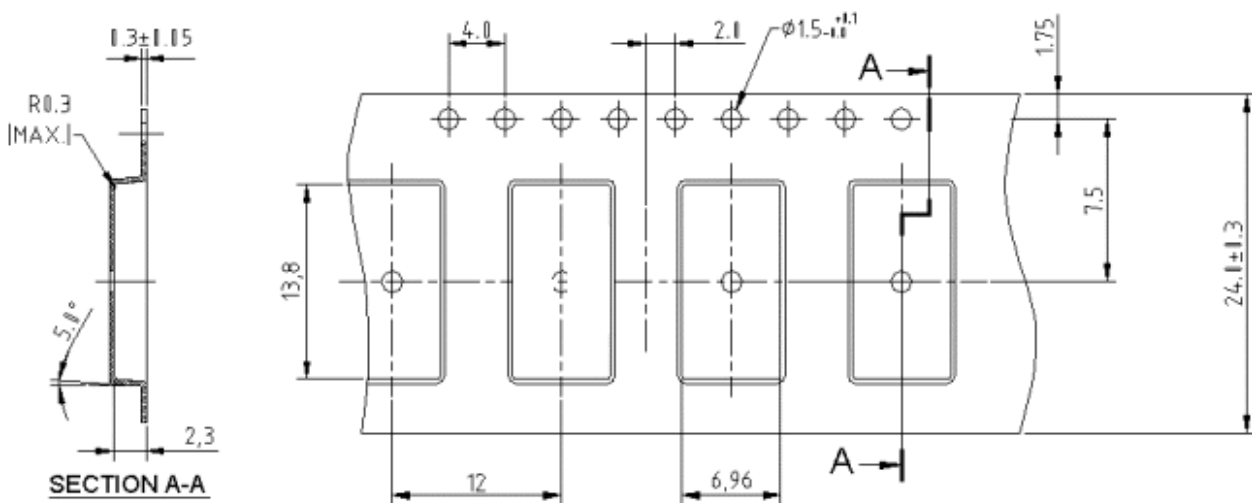
Model: TB0763A
Rev No: 1

G. PACKING:

1. REEL DIMENSION



2. TAPE DIMENSION



SAW Filter 120.0MHz
Part No: MP03441

Model: TB0763A
Rev No: 1

H. RECOMMENDED REFLOW PROFILE:

