

SAW Filter 190.0MHz
Part No: MP03498

Model: TB0529A
Rev No: 1

A. MAXIMUM RATING:

1. Operating Temperature: -10°C ~ +80°C
2. Storage Temperature: -40°C ~ +85°C
3. Input Power Level: 10dBm

B. CHARACTERISTICS:

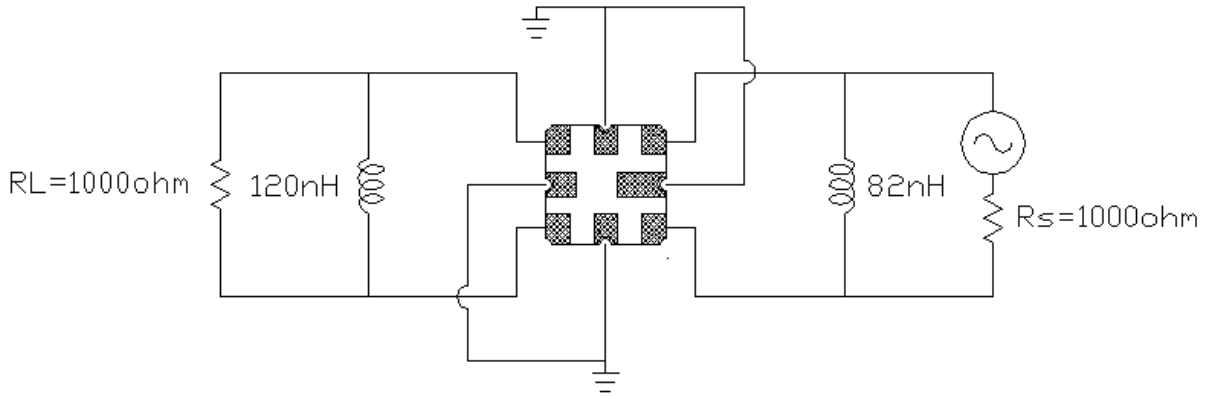
Ambient Temperature: 25°C

Characteristics	Value			Note
	Min.	Typ.	Max.	
Center frequency Fc MHz	-	190	-	-
Maximum Insertion loss IL dB	-	5.3	7.0	-
3dB Bandwidth MHz	4.60	6.80	-	-
Passband Ripple (Fc ± 2MHz) MHz	-	0.60	2.00	-
Group Delay Ripple (Fc ± 2MHz) nS	-	30	100	-
Attenuation: (Reference level from Max. IL)				
From Fc ± 5MHz to Fc ± 7.5MHz dB	10	15	-	-
From Fc ± 7.5MHz to Fc ± 12.5MHz dB	25	35	-	-
From Fc ± 12.5MHz to Fc ± 100MHz dB	36	40	-	-
Temp Coefficient ppm/°C	-	-18	-	-

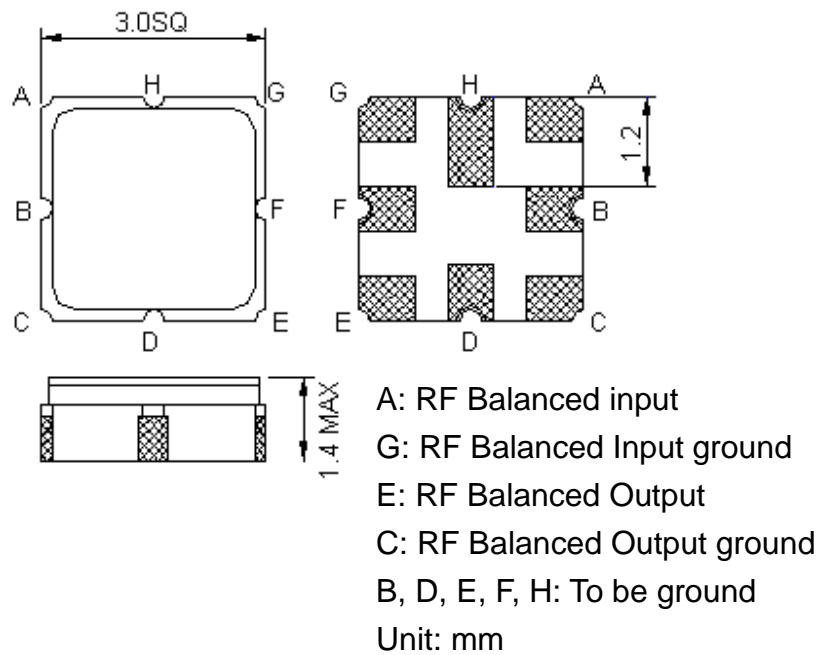
SAW Filter 190.0MHz
Part No: MP03498

Model: TB0529A
Rev No: 1

C. TEST FIXTURE:



D. OUTLINE DRAWING:



SAW Filter 190.0MHz
Part No: MP03498

Model: TB0529A
Rev No: 1

E. FREQUENCY CHARACTERISTICS:

1. S21 Response

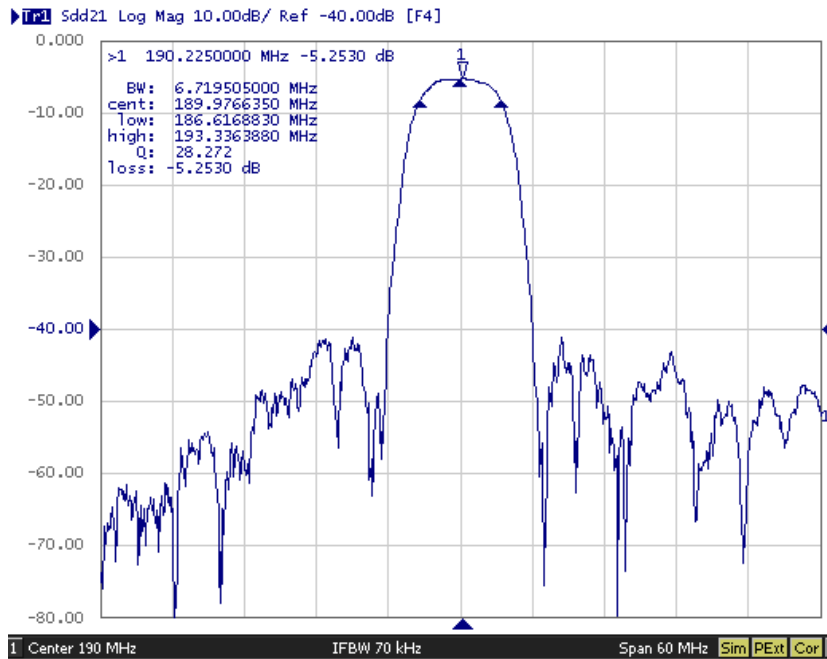


Fig. 1. Horizontal: 6MHz/Div, Vertical: 10dB/Div

2. Pass band Ripple and Group Delay Ripple

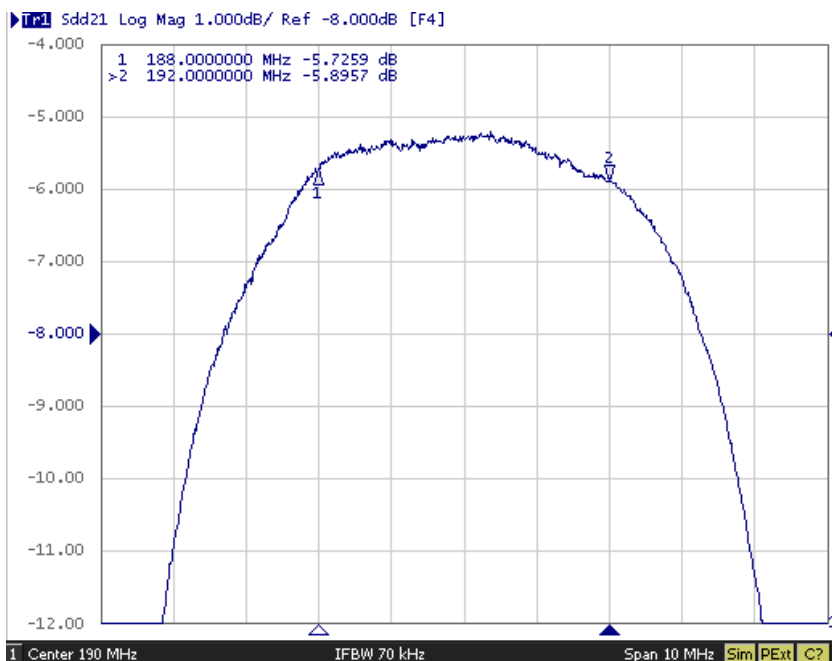


Fig. 2. Horizontal: 1MHz/Div; Vertical: 1dB/Div

SAW Filter 190.0MHz
Part No: MP03498

Model: TB0529A
Rev No: 1

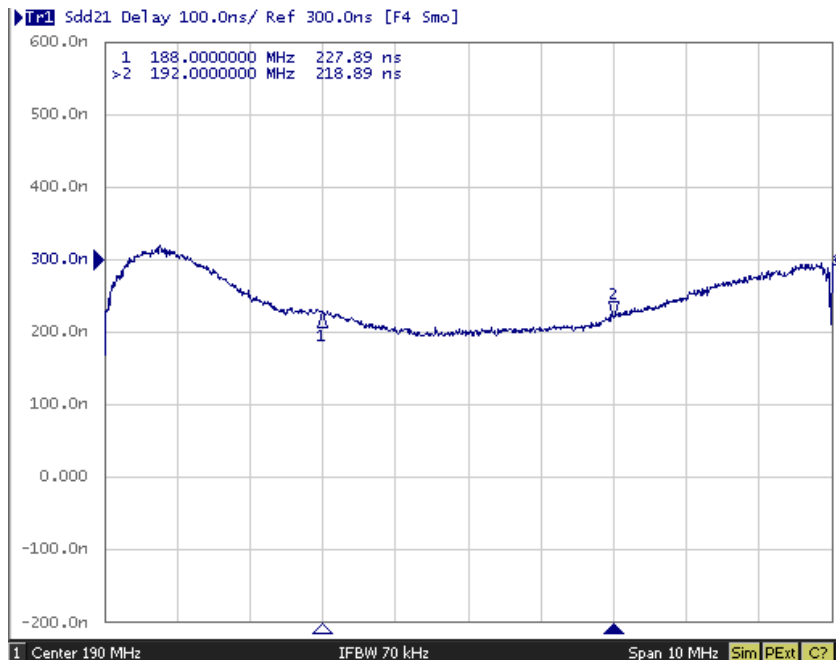
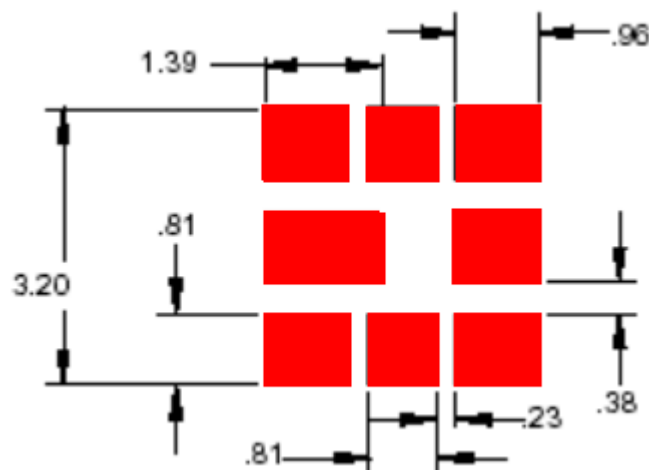


Fig. 3. Horizontal: 1MHz/Div, Vertical: 100nS/Div

F. PCB FOOTPRINT:

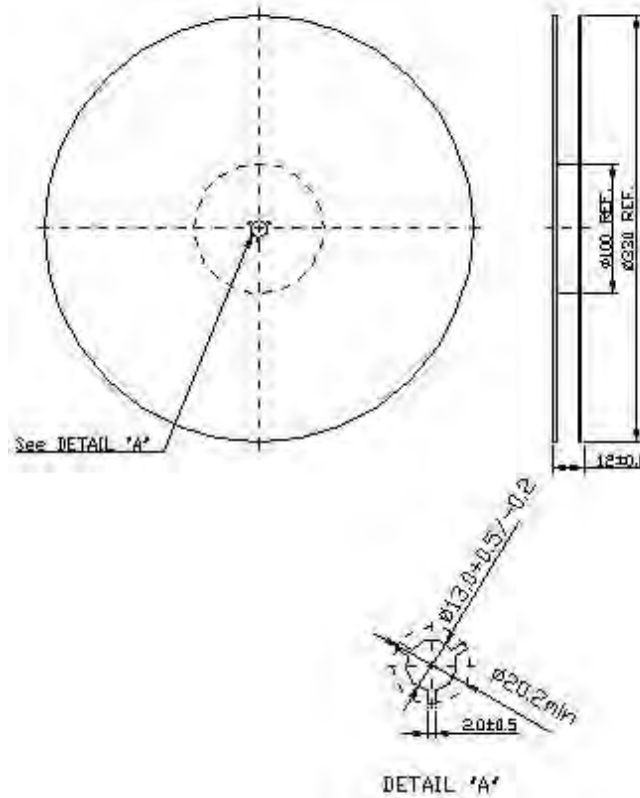


SAW Filter 190.0MHz
Part No: MP03498

Model: TB0529A
Rev No: 1

G. PACKING:

1. REEL DIMENSION



2. TAPE DIMENSION

