

SAW Filter 256.0MHz
Part No: MP03515

Model: TB0758A
Rev. No: 1

A. MAXIMUM RATING:

1. Operating Temperature: -40°C ~ +90°C
2. Storage Temperature: -40°C ~ +90°C
3. Input power: 20dBm

B. CHARACTERISTICS:

Ambient Temperature: 25°C

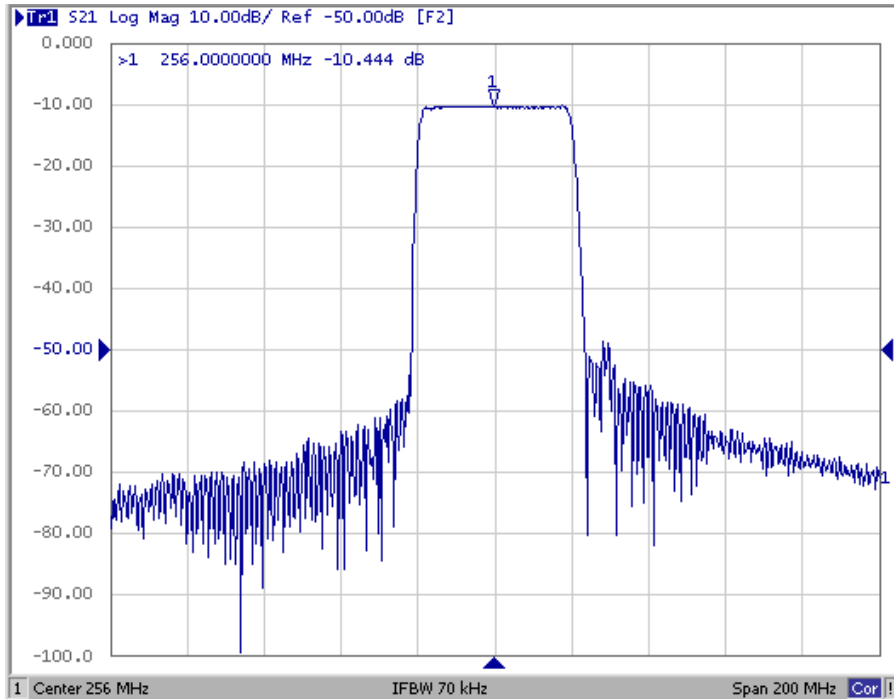
| Characteristics | Value | | | Note |
|---|-------|------|------|------|
| | Min. | Typ. | Max. | |
| Center frequency Fc MHz | - | 256 | - | - |
| Minimum Insertion loss IL dB | - | 10.2 | 13.0 | - |
| 1dB BW MHz | 34 | 38 | - | |
| 40dB BW MHz | - | 45 | 50.0 | |
| Attenuation (Reference to Minimum Insertion loss) | | | | |
| 225MHz dB | 40 | 51 | - | - |
| 290MHz dB | 40 | 47 | - | - |
| Temp Coefficient ppm/K | - | -94 | - | - |
| Matching: <ol style="list-style-type: none"> 1. The input of the filter will be matched to 50Ω 2. The output of the filter will be matched to 50Ω | | | | |

SAW Filter 256.0MHz
Part No: MP03515

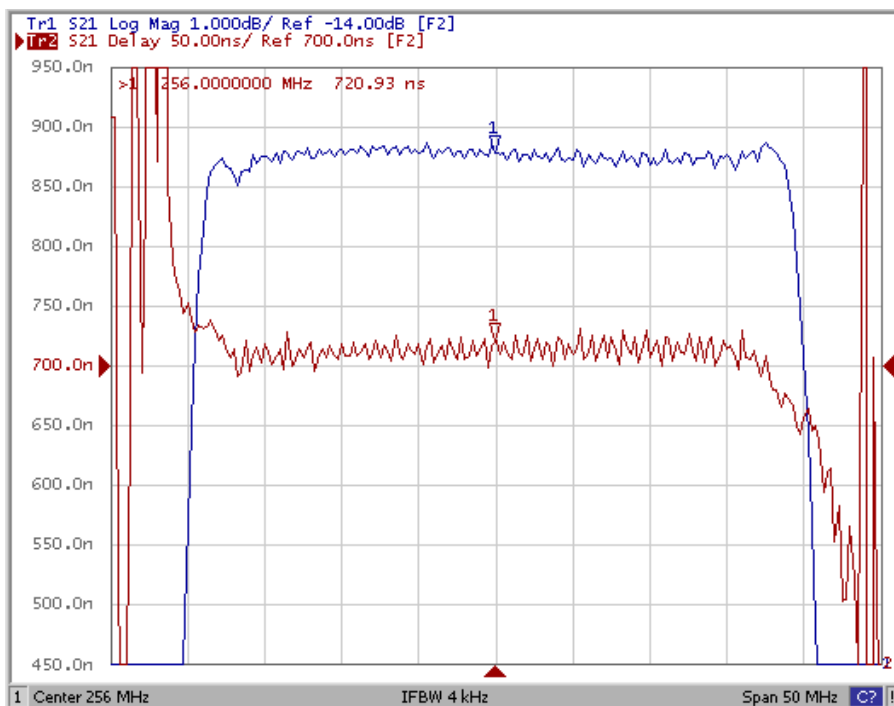
Model: TB0758A
Rev. No: 1

C. FREQUENCY CHARACTERISTICS:

1. Wide band Response: (span 200MHz)



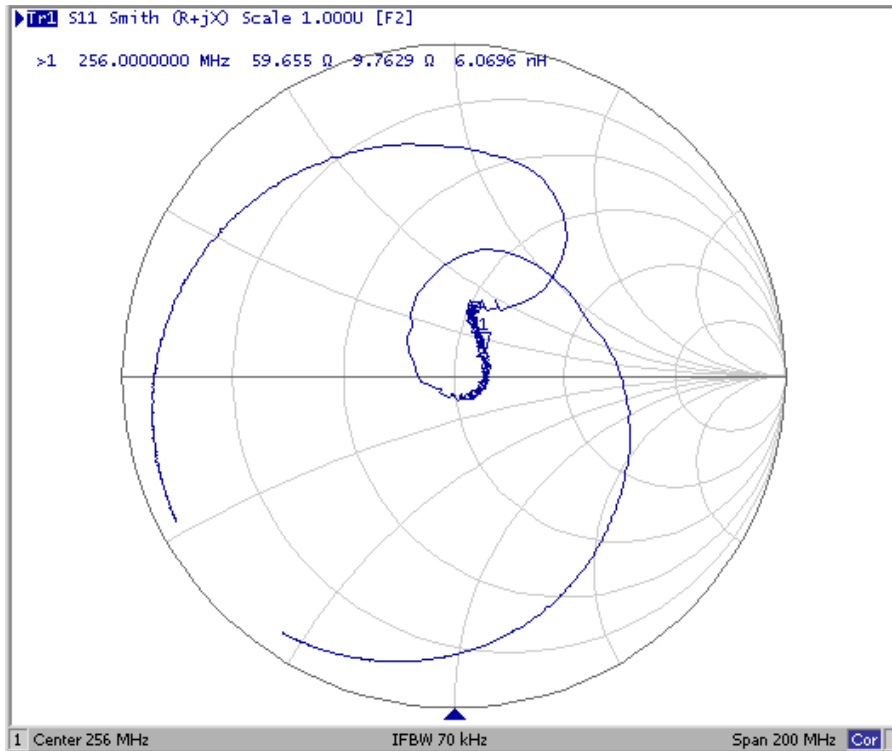
2. Pass band Response and Group Delay Variation: (span 50MHz)



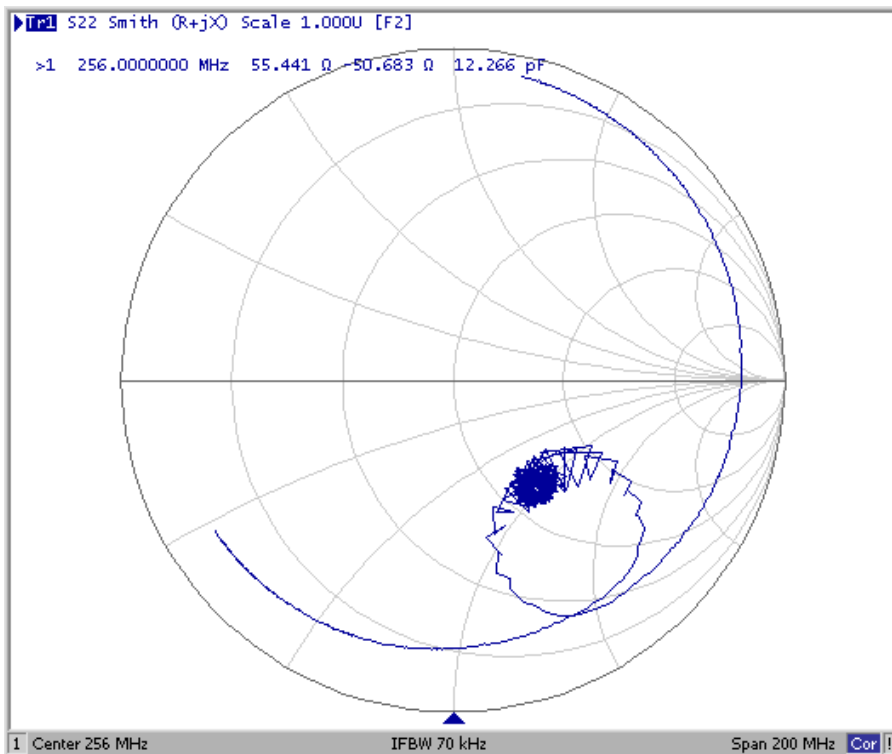
SAW Filter 256.0MHz
Part No: MP03515

Model: TB0758A
Rev. No: 1

3. S11 Smith-Chart: (span 200MHz)



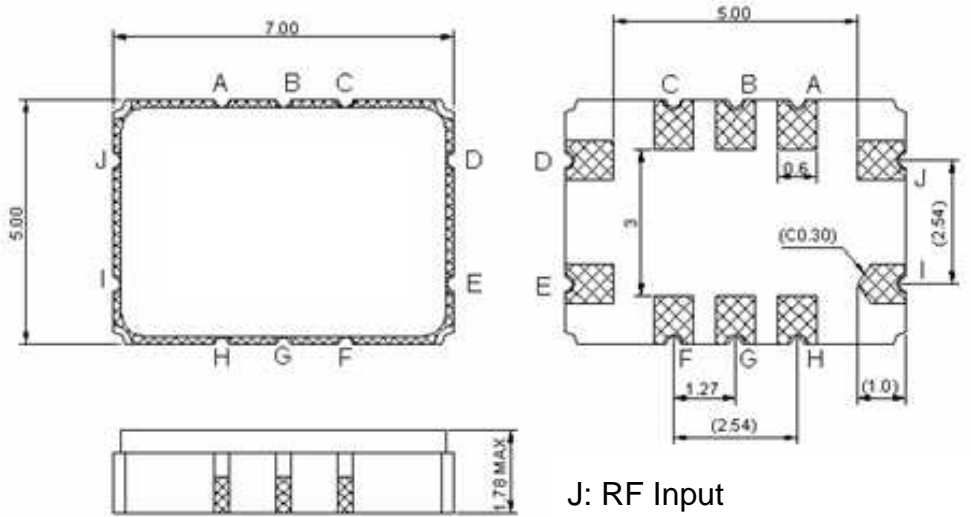
4. S22 Smith-Chart: (span 200MHz)



SAW Filter 256.0MHz
Part No: MP03515

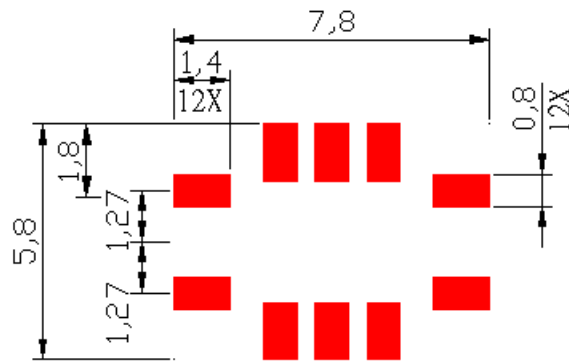
Model: TB0758A
Rev. No: 1

D. OUTLINE DRAWING:

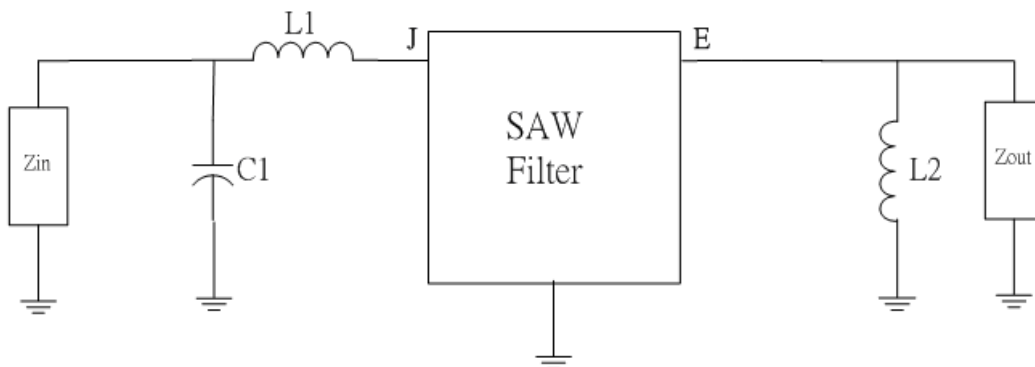


J: RF Input
 E: RF Output
 H, G, F, D, C, B, A, I: Ground
 Unit: mm

E. PCB FOOTPRINT:



F. MATCHING CIRCUIT:



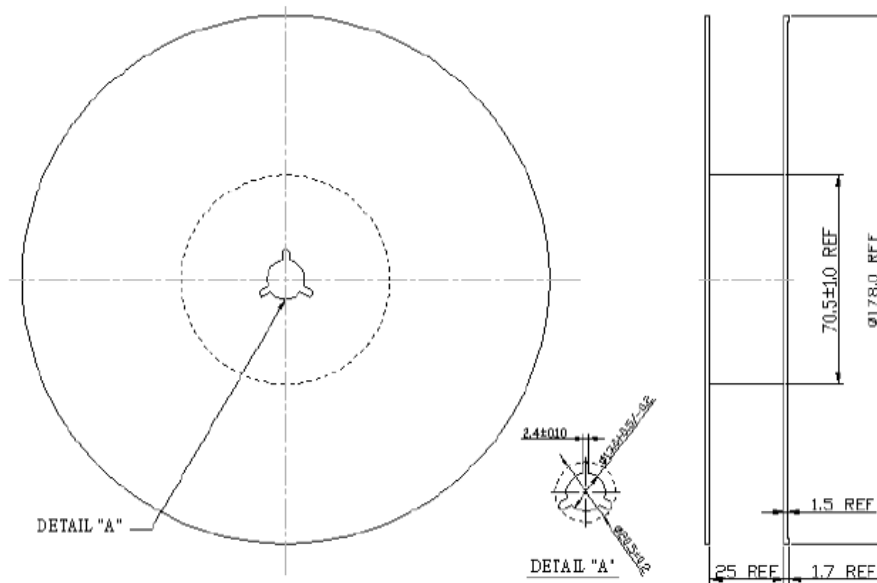
$$Z_{IN} = Z_{OUT} = 50\Omega, L1 = 22nH, C1 = 26pF, L2 = 33nH$$

SAW Filter 256.0MHz
Part No: MP03515

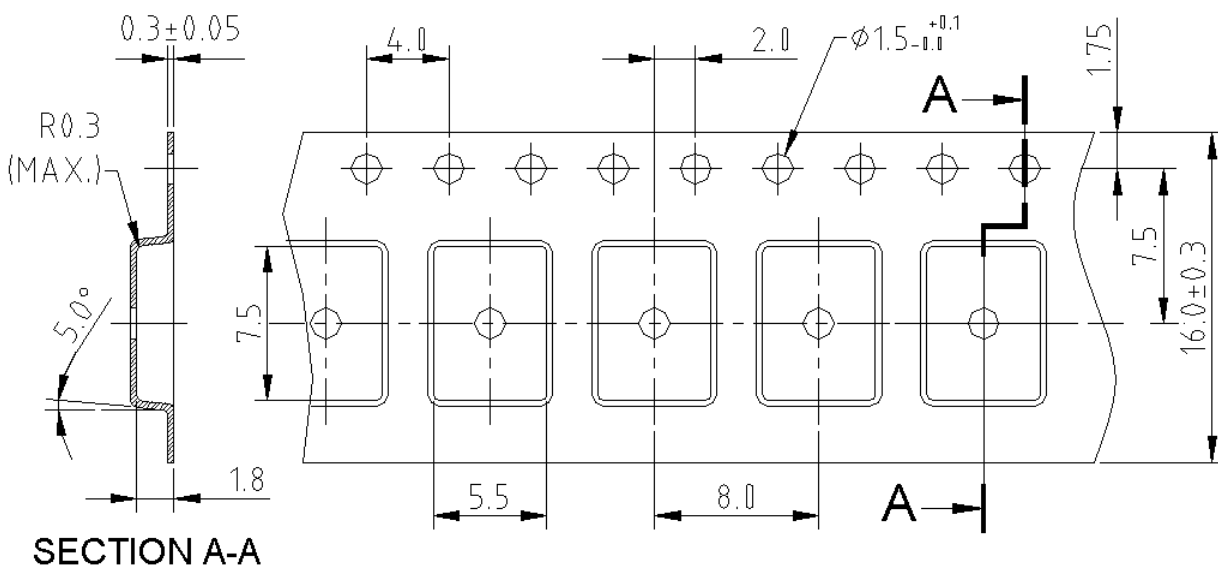
Model: TB0758A
Rev. No: 1

G. PACKING:

1. REEL DIMENSION:



2. TAPE DIMENSION:



SAW Filter 256.0MHz
Part No: MP03515

Model: TB0758A
Rev. No: 1

H. RECOMMENDED REFLOW PROFILE:

