

**SAW Filter 288.0MHz**  
**Part No: MP03556**

**Model: TB0589A**  
**Rev No: 1**

**A. MAXIMUM RATING:**

1. Input Power Level: 10dBm
2. Operating Temperature: -40°C ~ 85°C
3. Storage Temperature: -40°C ~ +85°C

**B. CHARACTERISTICS:**

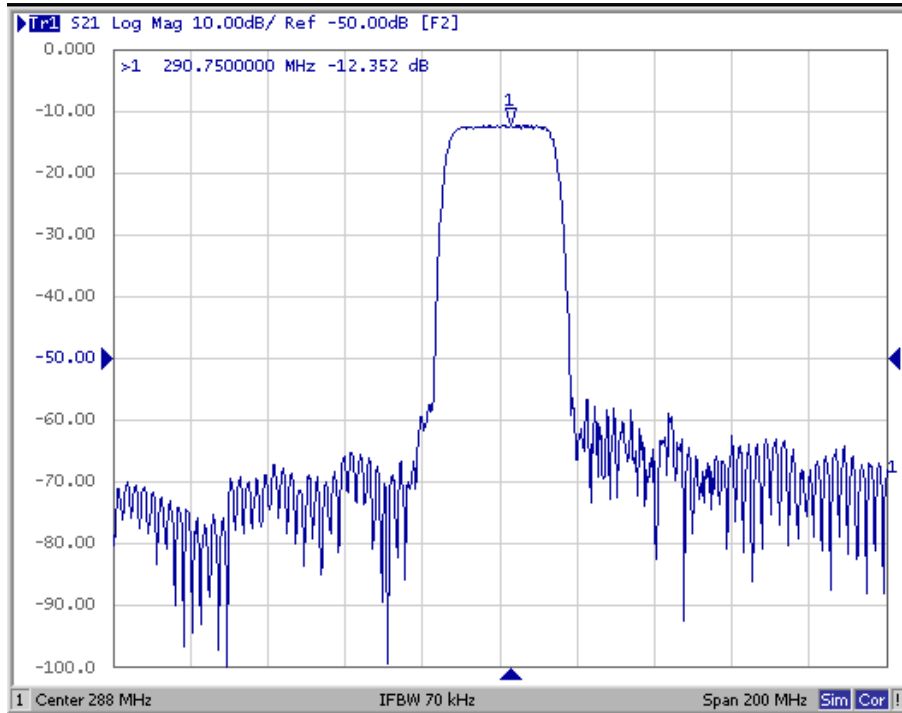
Characteristics	Value			Note
	Min.	Typ.	Max.	
Center frequency Fc MHz	-	288	-	-
Minimum Insertion loss IL dB	-	12.5	15	-
1.5dB Bandwidth MHz	22.3	25.6	-	-
Amplitude Ripple (Fc ± 11.1MHz) dB	-	0.6	1.0	-
Group-delay Ripple (Fc ± 11.1MHz) nsec	-	45	200	-
Average -delay (Fc ± 11.1MHz) usec		0.45		
Attenuation (Reference level from Min. insertion loss)				
Fc ± 17.1MHz dB	18	23	-	-
Fc ± 28.6MHz dB	42	50	-	-
Fc ± 37.1MHz dB	45	52	-	-
Fc ± 74.3MHz dB	47	55	-	-

**SAW Filter 288.0MHz**  
**Part No: MP03556**

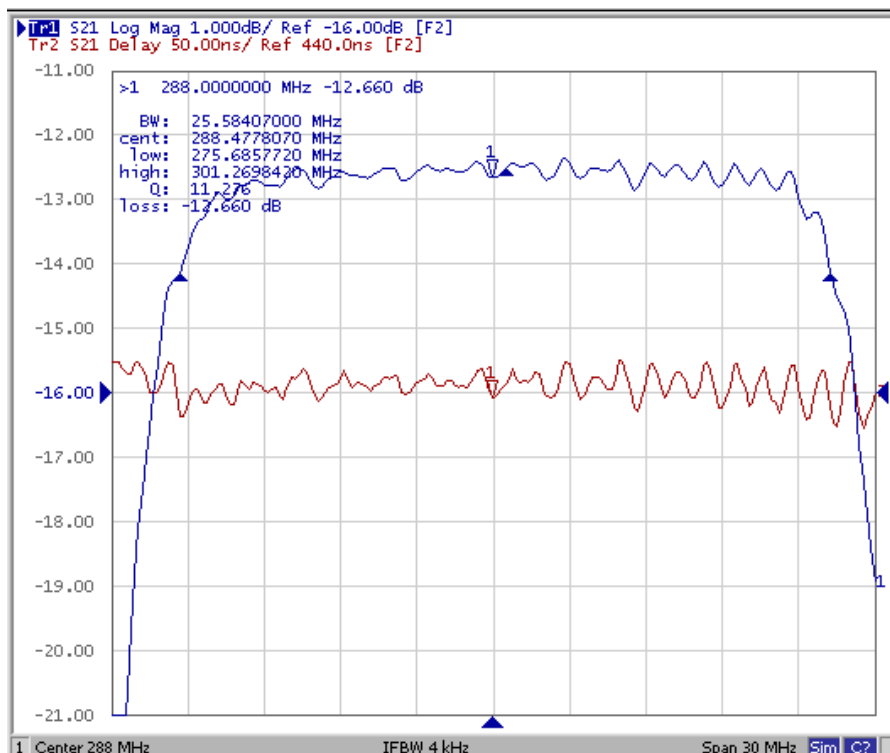
**Model: TB0589A**  
**Rev No: 1**

**C. FREQUENCY CHARACTERISTICS:**

1. S21 Response: (span 200MHz)



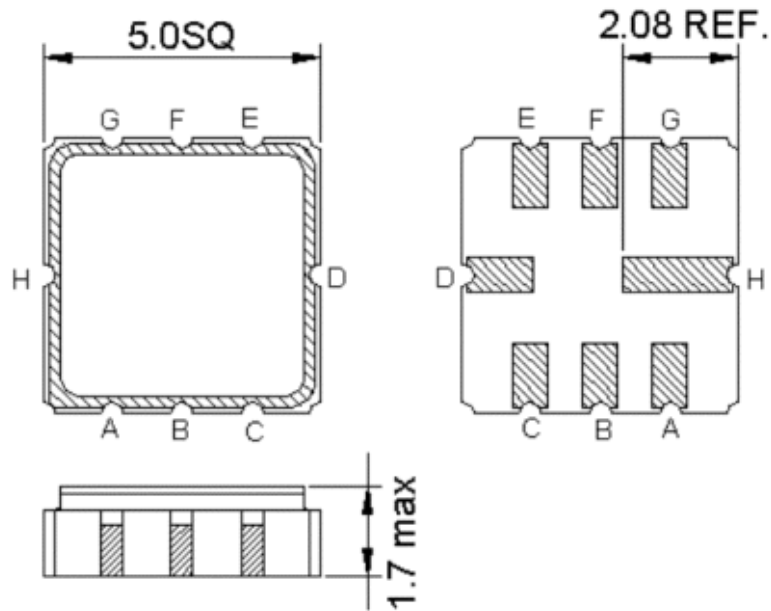
2. Passband Response: (span 30MHz)



**SAW Filter 288.0MHz**  
**Part No: MP03556**

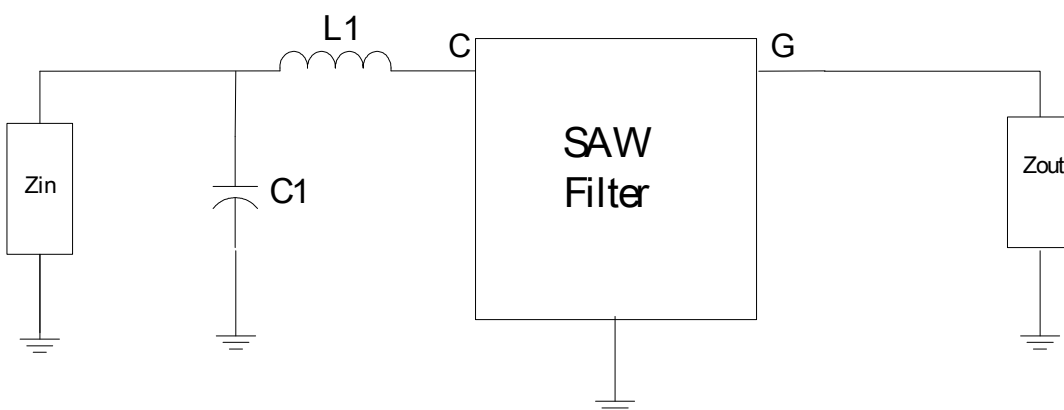
**Model: TB0589A**  
**Rev No: 1**

**D. OUTLINE DRAWING:**



C: RF input  
 G: RF output  
 H, D: Case Ground  
 A, B, E, F: Ground  
 Unit: mm

**E. MATCHING CIRCUIT:**



$Z_{IN}$  and  $Z_{OUT}$  are  $50\Omega$

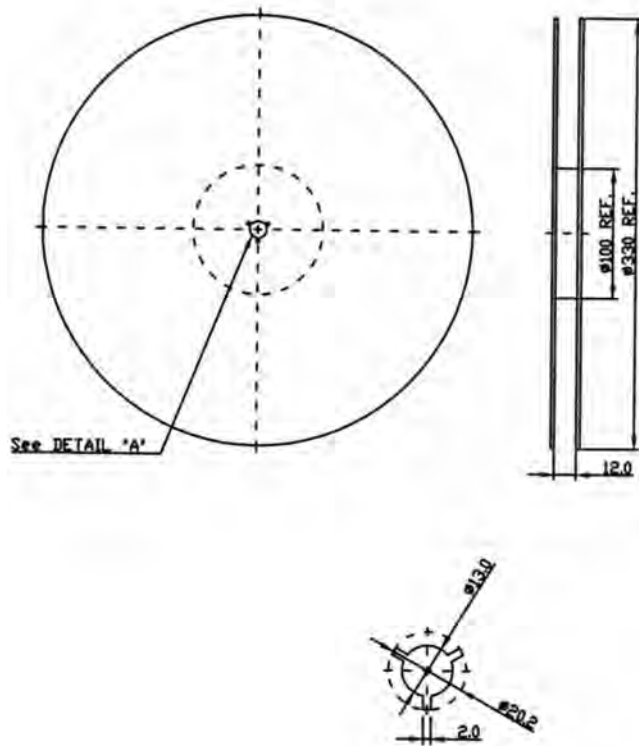
$L1 = 27nH$ ,  $C1 = 18pF$

**SAW Filter 288.0MHz**  
**Part No: MP03556**

**Model: TB0589A**  
**Rev No: 1**

**F. PACKING:**

**1. REEL DIMENSION**



**2. TAPE DIMENSION**

