

SAW Filter 288.0MHz
Part No: MP03557

Model: TB0588A
Rev No: 2

A. MAXIMUM RATING:

1. Input Power Level: 10dBm
2. Operating Temperature: -40°C ~ 85°C
3. Storage Temperature: -40°C ~ +85°C

B. CHARACTERISTICS:

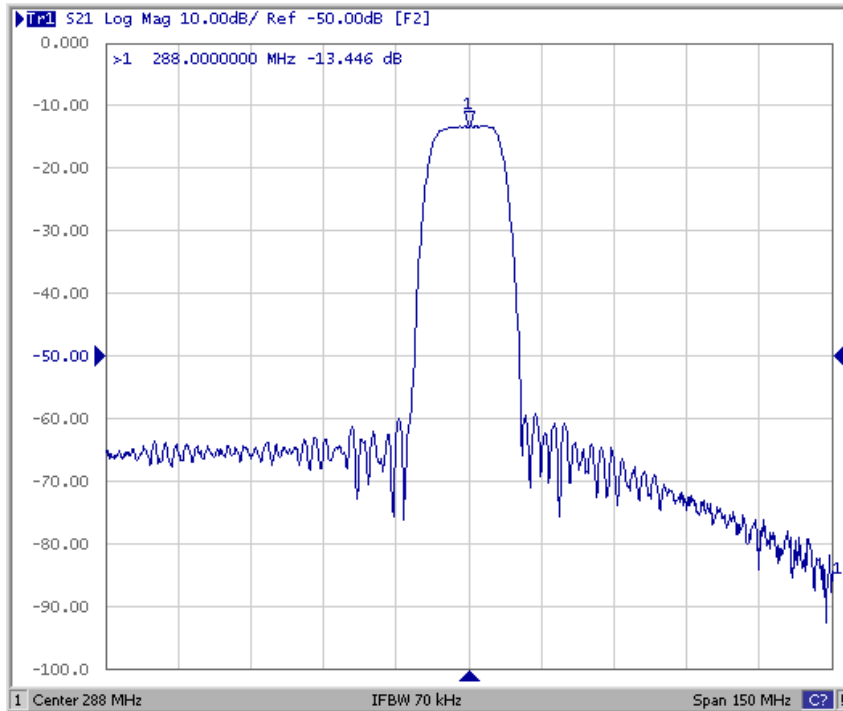
Characteristics	Value			Note
	Min.	Typ.	Max.	
Center frequency Fc MHz	-	288	-	-
Minimum Insertion loss IL dB	-	13.2	15	-
1.5dB Bandwidth MHz	11.1	12.8	-	-
Amplitude Ripple (Fc ± 5.0MHz) dB	-	0.5	1.0	-
Group-delay Ripple (Fc ± 5.5MHz) nsec	-	25	200	-
Average-delay (Fc ± 5.5MHz) usec		0.45		
Input Output Return Loss at Fc dB		12		
Attenuation (Reference level from Min. insertion loss)				
Fc ± 8.60MHz dB	5	8	-	-
Fc ± 14.3MHz dB	40	45	-	-
Fc ± 18.6MHz dB	42	48	-	-
Fc ± 37.1MHz dB	43	48	-	-

SAW Filter 288.0MHz
Part No: MP03557

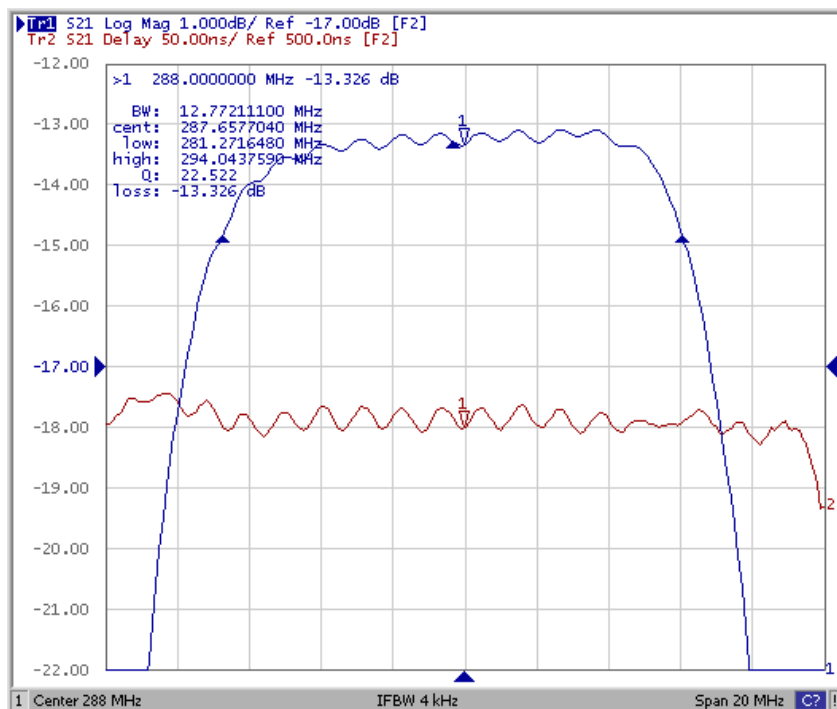
Model: TB0588A
Rev No: 2

C. FREQUENCY CHARACTERISTICS:

1. S21 Response: (span 150MHz)



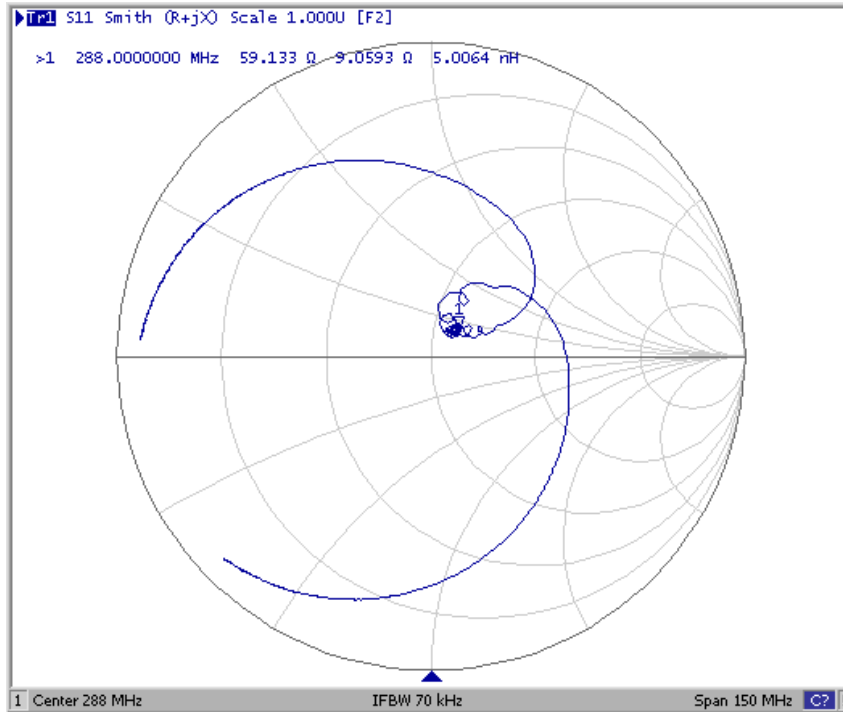
2. Passband Response: (span 20MHz)



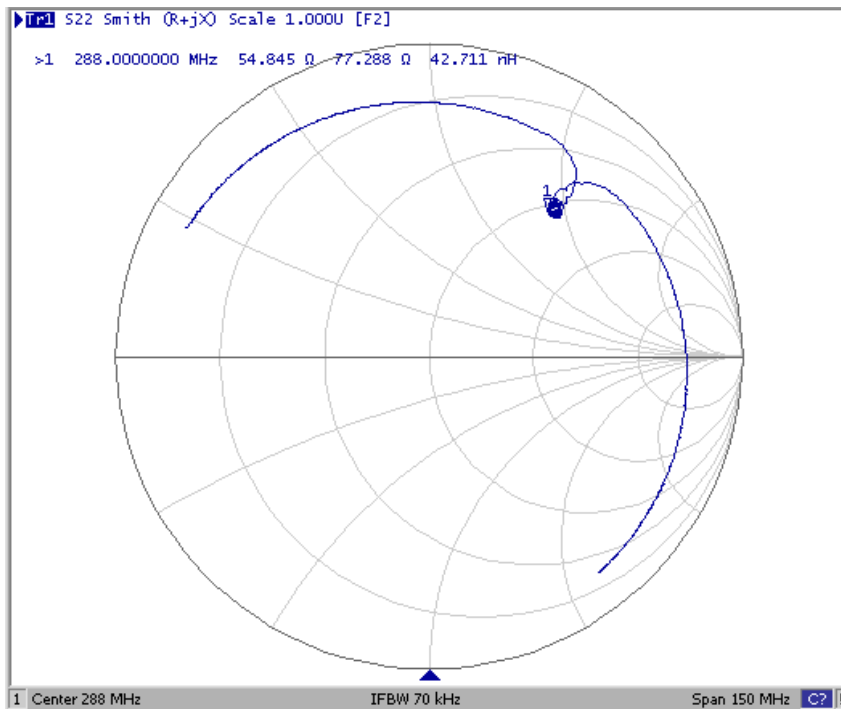
SAW Filter 288.0MHz
Part No: MP03557

Model: TB0588A
Rev No: 2

3. S11 Smith-Chart: (span 150MHz)



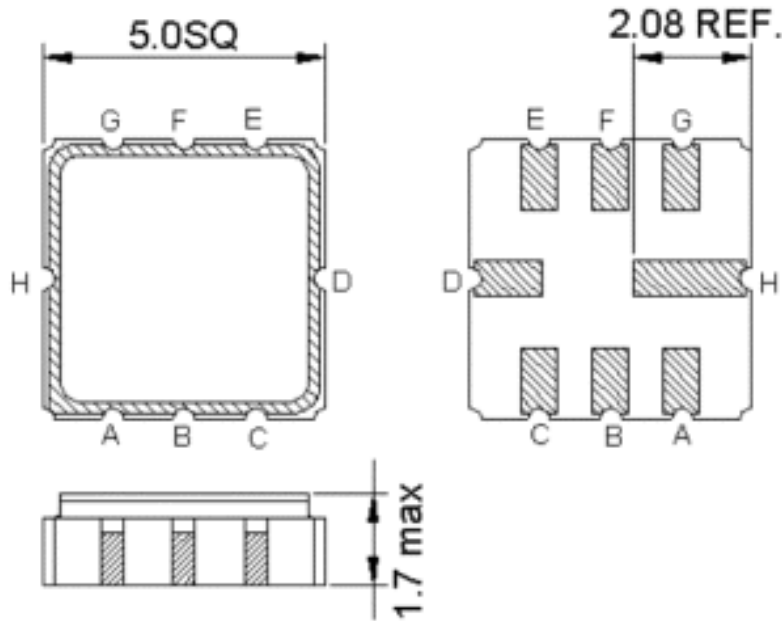
4. S22 Smith-Chart: (span 150MHz)



SAW Filter 288.0MHz
Part No: MP03557

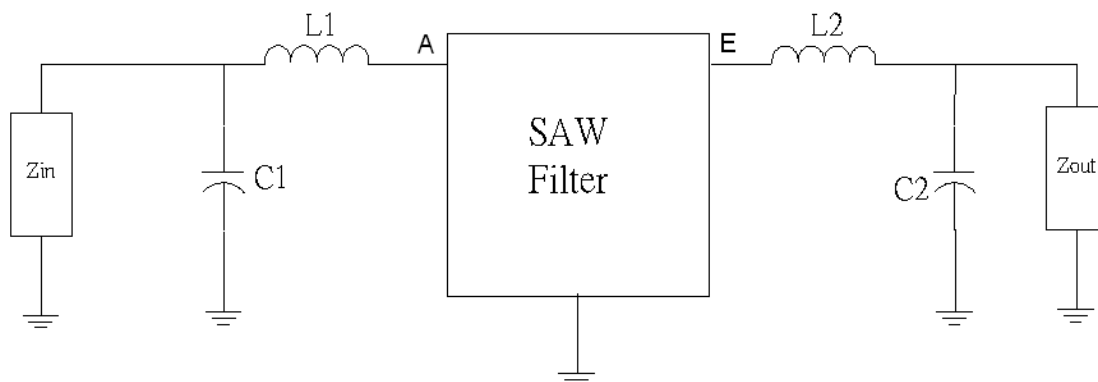
Model: TB0588A
Rev No: 2

D. OUTLINE DRAWING:



- A: RF input
 - E: RF output
 - H, D: Case Ground
 - B, C, G, F: Ground
- Unit: mm

E. MATCHING CIRCUIT:



Z_{IN} and Z_{OUT} are 50Ω

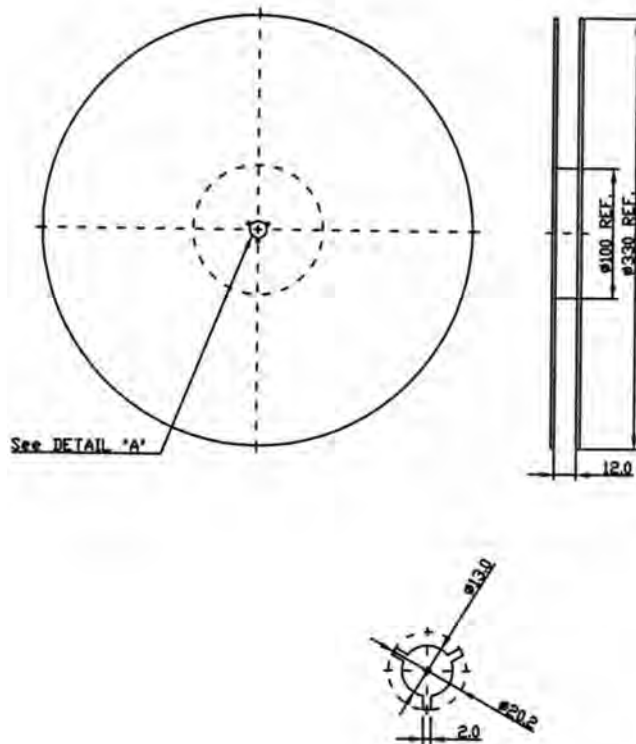
$L1 = 15nH$, $C1 = 24pF$, $L2 = 22nH$, $C2 = 10pF$

SAW Filter 288.0MHz
Part No: MP03557

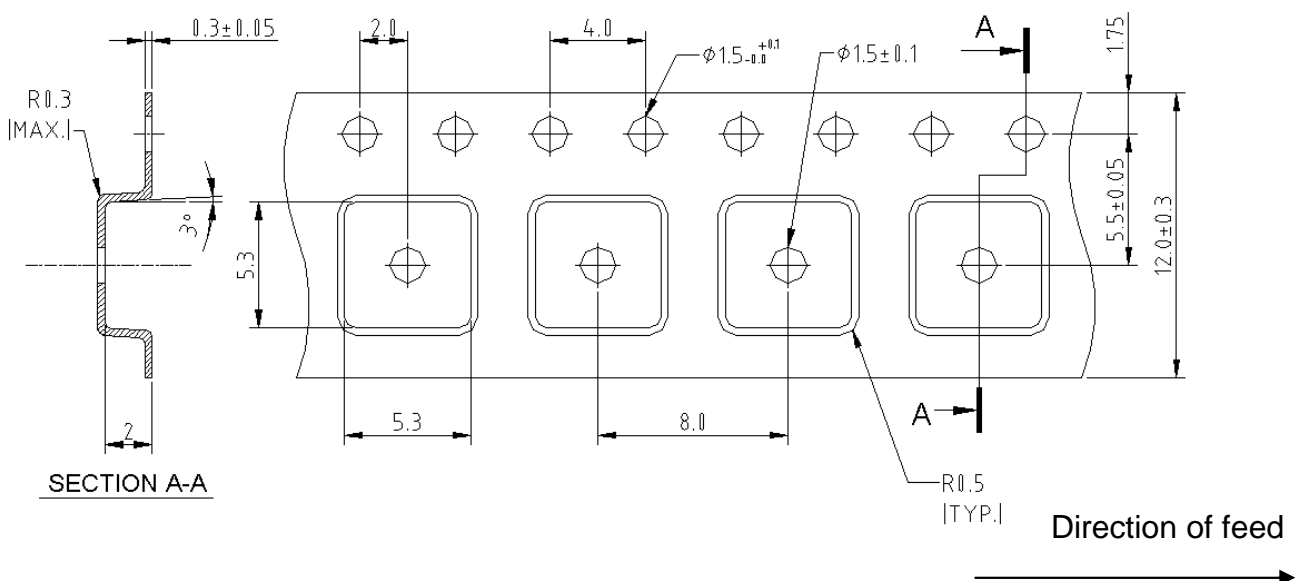
Model: TB0588A
Rev No: 2

F. PACKING:

1. REEL DIMENSION



2. TAPE DIMENSION



SAW Filter 288.0MHz
Part No: MP03557

Model: TB0588A
Rev No: 2

G. RECOMMENDED REFLOW PROFILE:

