

SAW Filter 307.360MHz
Part No: MP03558

Model: TB0789A
Rev No: 1

A. MAXIMUM RATING:

1. Operating Temperature: -30°C ~ +85°C
2. Storage Temperature: -40°C ~ +85°C
3. Input power: 10dBm

B. CHARACTERISTICS:

Ambient Temperature: 25°C

Item	Unit	Min.	Typ.	Max.
Center Frequency	MHz	-	307.36	-
Insertion Loss (Fc ± 10.0 MHz)	dB	-	11.4	16
Passband Ripple (Fc ± 10.0 MHz)	dB	-	0.5	1.0
1dB BW	MHz	20.0	21.4	-
45dB BW	MHz	-	31.3	32
Attenuation 1 @ 10 ~ 290MHz	dB	40	44	-
Attenuation 2 @ 325 ~ 550MHz	dB	40	43	-

SAW Filter 307.360MHz
Part No: MP03558

Model: TB0789A
Rev No: 1

C. FREQUENCY CHARACTERISTICS:

1. S21 Response: (span: 80MHz)

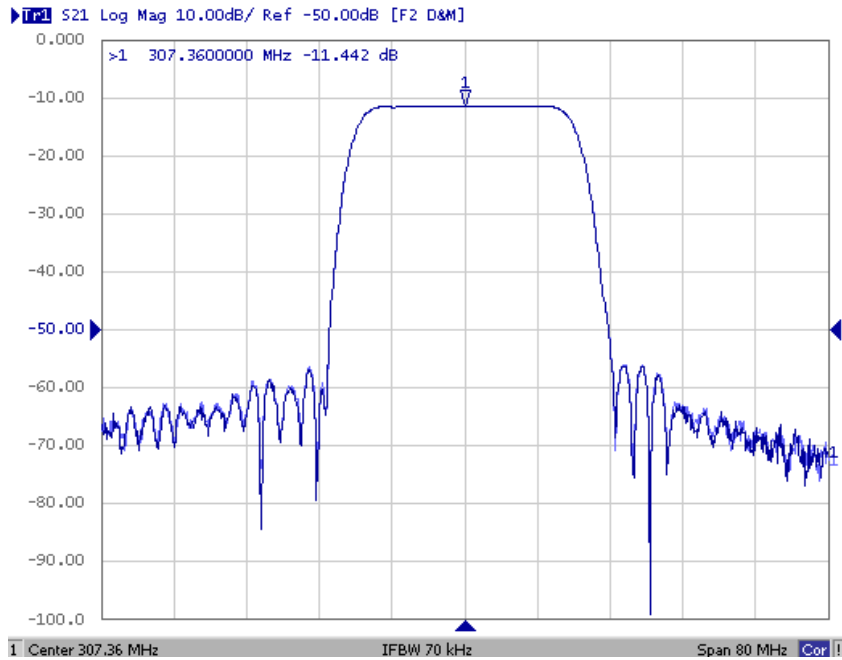


Fig. 1. Horizontal: 8MHz/Div, Vertical: 10dB/Div

2. Group-Delay Ripple: (span: 35MHz)

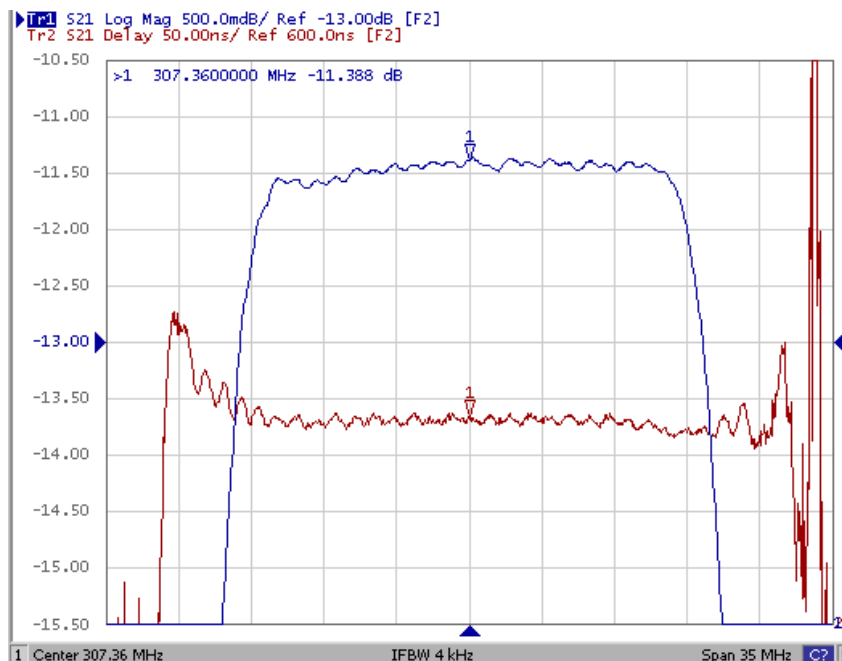
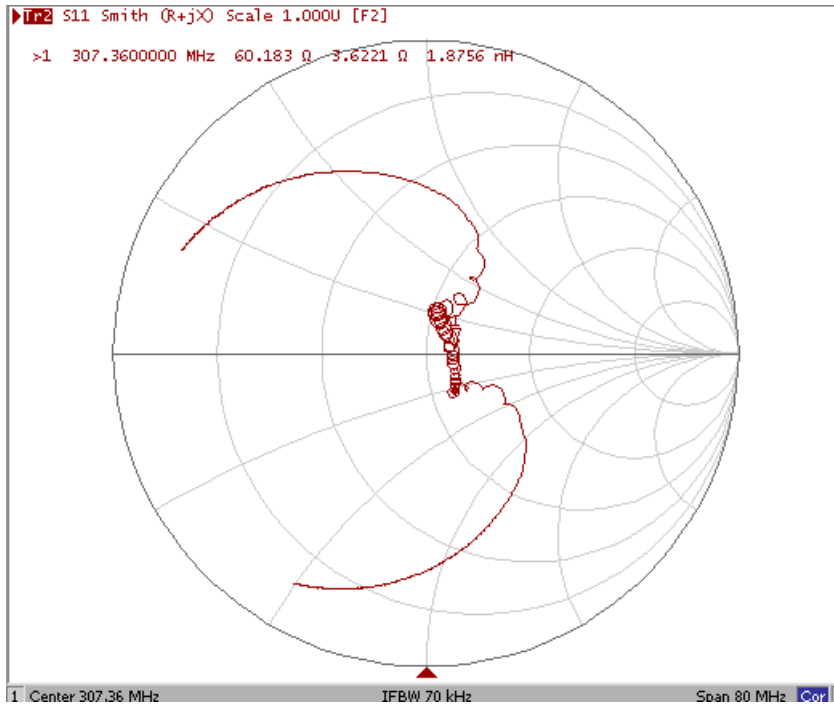


Fig. 2. Horizontal: 3.5MHz/Div, Vertical: 100nec/Div

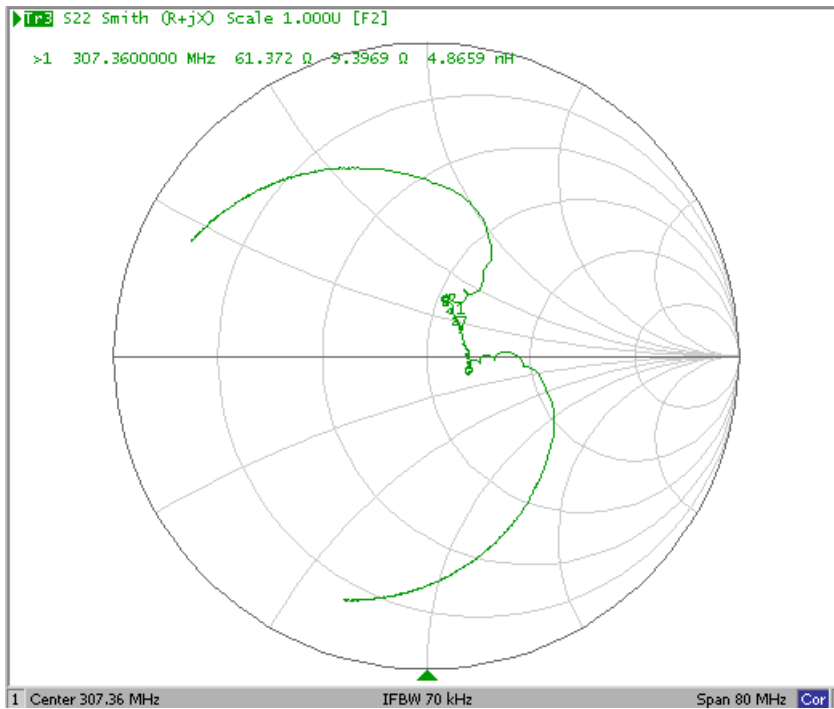
SAW Filter 307.360MHz
Part No: MP03558

Model: TB0789A
Rev No: 1

3. S11 Smith Chart: (span: 80MHz)



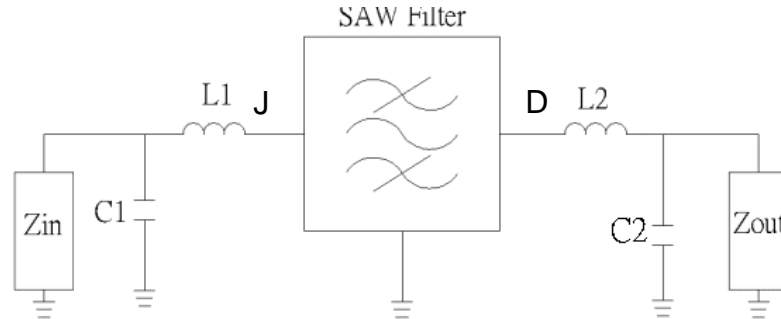
4. S22 Smith Chart: (span: 80MHz)



SAW Filter 307.360MHz
Part No: MP03558

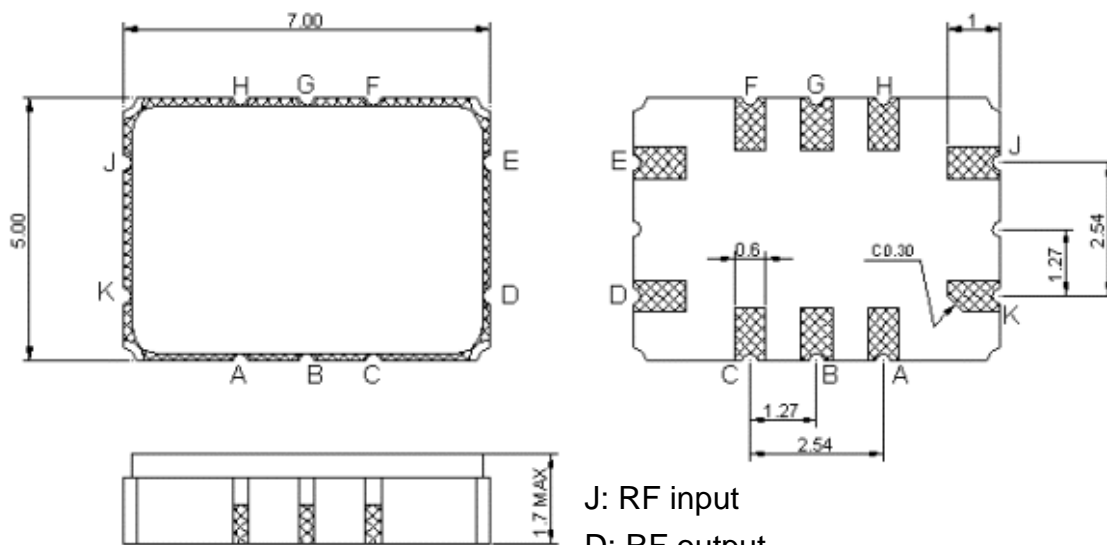
Model: TB0789A
Rev No: 1

D. MEASUREMENT CIRCUIT:



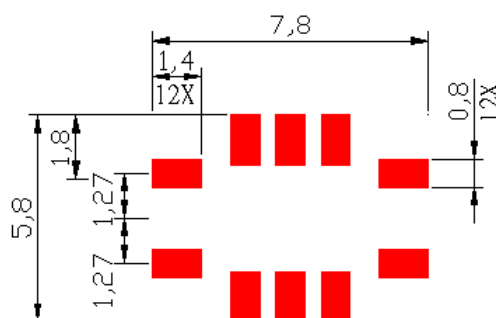
Z_{in} and Z_{out} are $50\ \Omega$.
 $L1 = 28.8\text{ nH}$, $C1 = 22\text{ pF}$, $L2 = 25\text{ nH}$, $C2 = 21\text{ pF}$

E. OUTLINE DRAWING:



J: RF input
 D: RF output
 K, E: Case Ground
 A, B, C, F, G, H: Ground
 Unit: mm

F. PCB FOOTPRINT:

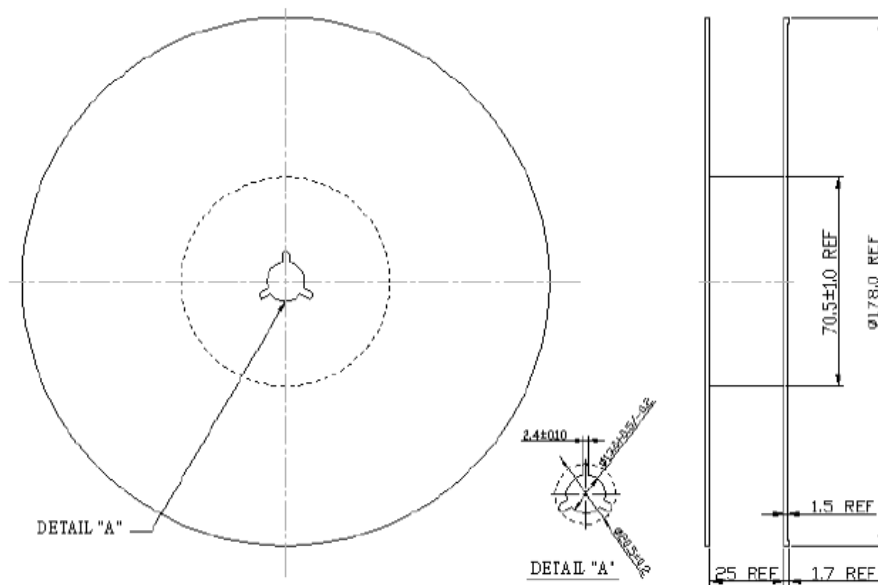


SAW Filter 307.360MHz
Part No: MP03558

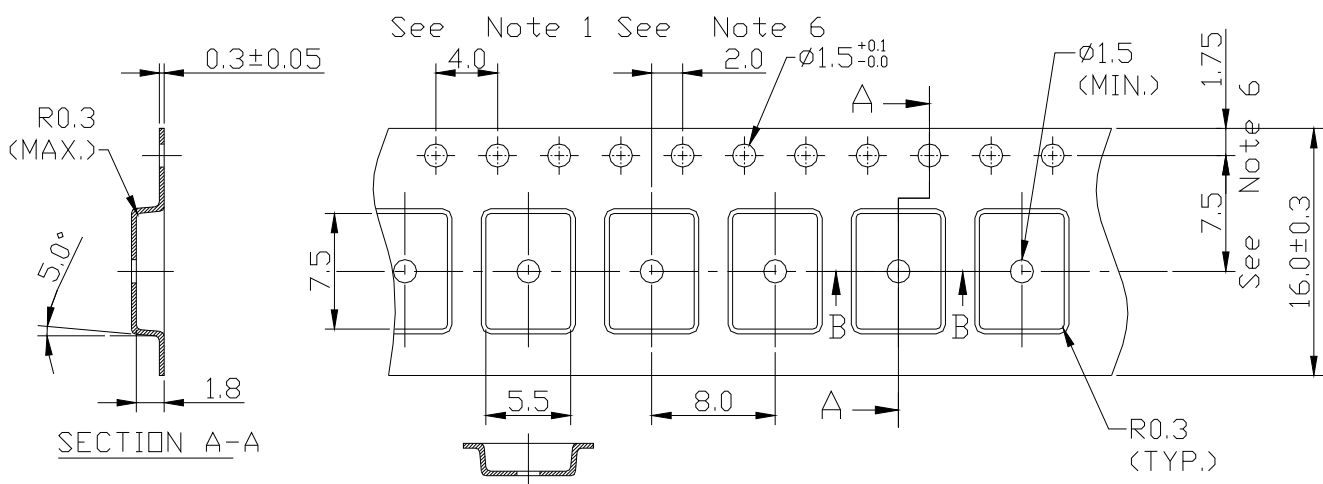
Model: TB0789A
Rev No: 1

G. PACKING:

1. REEL DIMENSION



2. TAPE DIMENSION



SAW Filter 307.360MHz
Part No: MP03558

Model: TB0789A
Rev No: 1

H. RECOMMENDED REFLOW PROFILE:

